

## ELEGOO US-SO-3D-CP1

# ELEGOO Mars Mate Air Purifier Instruction Manual

Model: US-SO-3D-CP1

## 1. INTRODUCTION

---

The ELEGOO Mars Mate Air Purifier is specifically designed for 3D printing environments, particularly for resin-based 3D printers. It effectively purifies the air by absorbing formaldehyde and reducing odors associated with 3D printing, ensuring a cleaner workspace. This manual provides essential information for the safe and efficient use of your Mars Mate Air Purifier.

# Filter Reset Reminder



Image 1.1: The Mars Mate Air Purifier is compatible with a wide range of 3D printers, including the Saturn 3 Ultra and Mars 4 Ultra.

## 2. SAFETY INFORMATION

---

Please read all safety instructions before operating the device to prevent injury or damage.

- Do not operate the purifier with a damaged power cord or plug.
- Keep the device away from water or other liquids. Do not immerse the unit.
- Ensure proper ventilation around the unit; do not block air inlets or outlets.
- Do not insert objects into any openings.
- Unplug the device before cleaning or performing any maintenance.
- This appliance is not intended for use by persons (including children) with reduced physical, sensory or mental capabilities, or lack of experience and knowledge, unless they have been given supervision or instruction concerning use of the appliance by a person responsible for their safety.

## 3. SETUP

---

1. **Unpack the Purifier:** Carefully remove the Mars Mate Air Purifier from its packaging. Retain packaging for future transport or storage.

2. **Placement:** Place the purifier on a stable, flat surface near your 3D printer. Ensure there is adequate space around the unit for proper airflow. The purifier is designed to integrate seamlessly into your 3D printing setup.
3. **Power Connection:** Connect the power adapter to the purifier and then plug it into a suitable power outlet.
4. **Filter Check:** Ensure the activated carbon filter is correctly installed inside the unit. Refer to the Maintenance section for filter installation details if needed.



Image 3.1: The Mars Mate Air Purifier is designed for integration with 3D printers, such as the ELEGOO Saturn 3.

## 4. OPERATING INSTRUCTIONS

The Mars Mate Air Purifier features a simple control panel for easy operation.

1. **Power On/Off:** Press the **On/Off** button to turn the purifier on or off. The indicator light will illuminate when the unit is active.
2. **Mode Selection:** Press the **Auto/Speed** button to cycle through different operating modes. The purifier may offer an automatic mode that adjusts fan speed based on air quality, and manual speed settings.
3. **Filter Reset:** After replacing the filter, press and hold the **Filter** button for a few seconds to reset the

filter life indicator. This ensures accurate tracking of filter usage.



Image 4.1: Control panel of the Mars Mate Air Purifier, highlighting the filter reset button.

## 5. MAINTENANCE

Regular maintenance ensures optimal performance and longevity of your Mars Mate Air Purifier.

- Filter Replacement:** The activated carbon filter should be replaced approximately every 2 months, depending on usage and air quality. To replace the filter:
  - Unplug the purifier from the power outlet.
  - Locate the filter compartment, typically at the base or side of the unit.
  - Open the compartment and carefully remove the used filter.
  - Insert a new ELEGOO Mars Mate activated carbon filter, ensuring it is seated correctly.
  - Close the filter compartment and plug the purifier back in.
  - Perform a filter reset as described in the Operating Instructions.
- Cleaning the Unit:** Wipe the exterior of the purifier with a soft, dry cloth. Do not use abrasive cleaners or solvents. Ensure the unit is unplugged before cleaning.

## Efficient Purification Ability

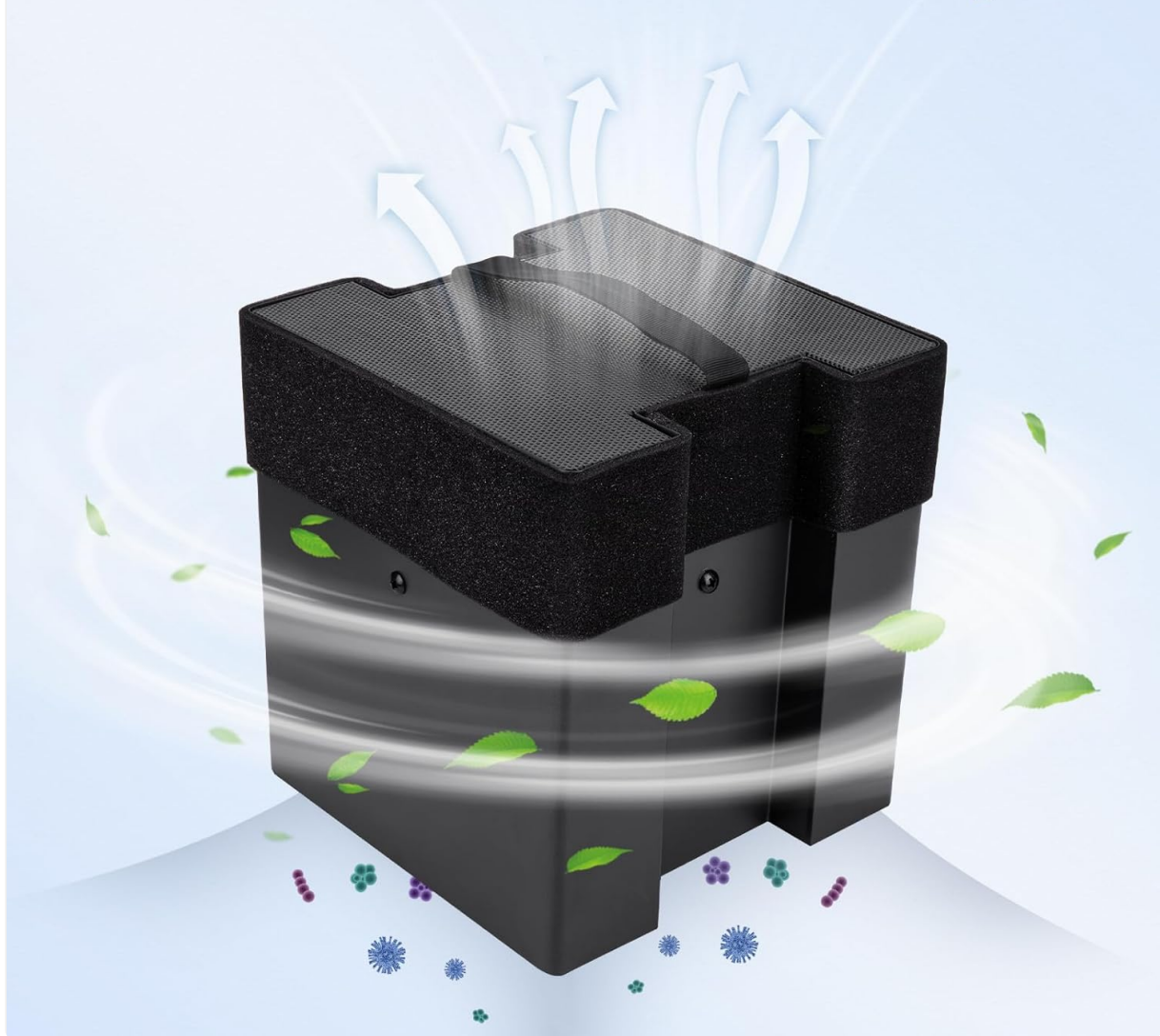


Image 5.1: The internal activated carbon filter is crucial for efficient purification.

## 6. TROUBLESHOOTING

If you encounter issues with your Mars Mate Air Purifier, refer to the following common problems and solutions:

Problem	Possible Cause	Solution
Purifier does not turn on	No power supply; Power cord not properly connected	Check power outlet; Ensure power cord is securely plugged in.
Poor odor reduction	Filter is old or clogged; Incorrect filter installation	Replace the activated carbon filter; Ensure filter is installed correctly.
Unusual noise during operation	Obstruction in fan; Unit not on a stable surface	Unplug and check for obstructions; Place on a stable, flat surface.

## 7. SPECIFICATIONS



Feature	Specification
Brand	ELEGOO
Model Number	US-SO-3D-CP1
Product Dimensions	33 x 29 x 48 cm
Item Weight	6.35 Kilograms
Power / Wattage	6 watts
Noise Level	35 Decibels
Filter Type	Activated Carbon
Purification Rate	Up to 95% (for formaldehyde and odors)
Material	Anti-oxidation ABS



Image 7.1: Physical dimensions of the Mars Mate Air Purifier.

## 6W Ultra Low Power

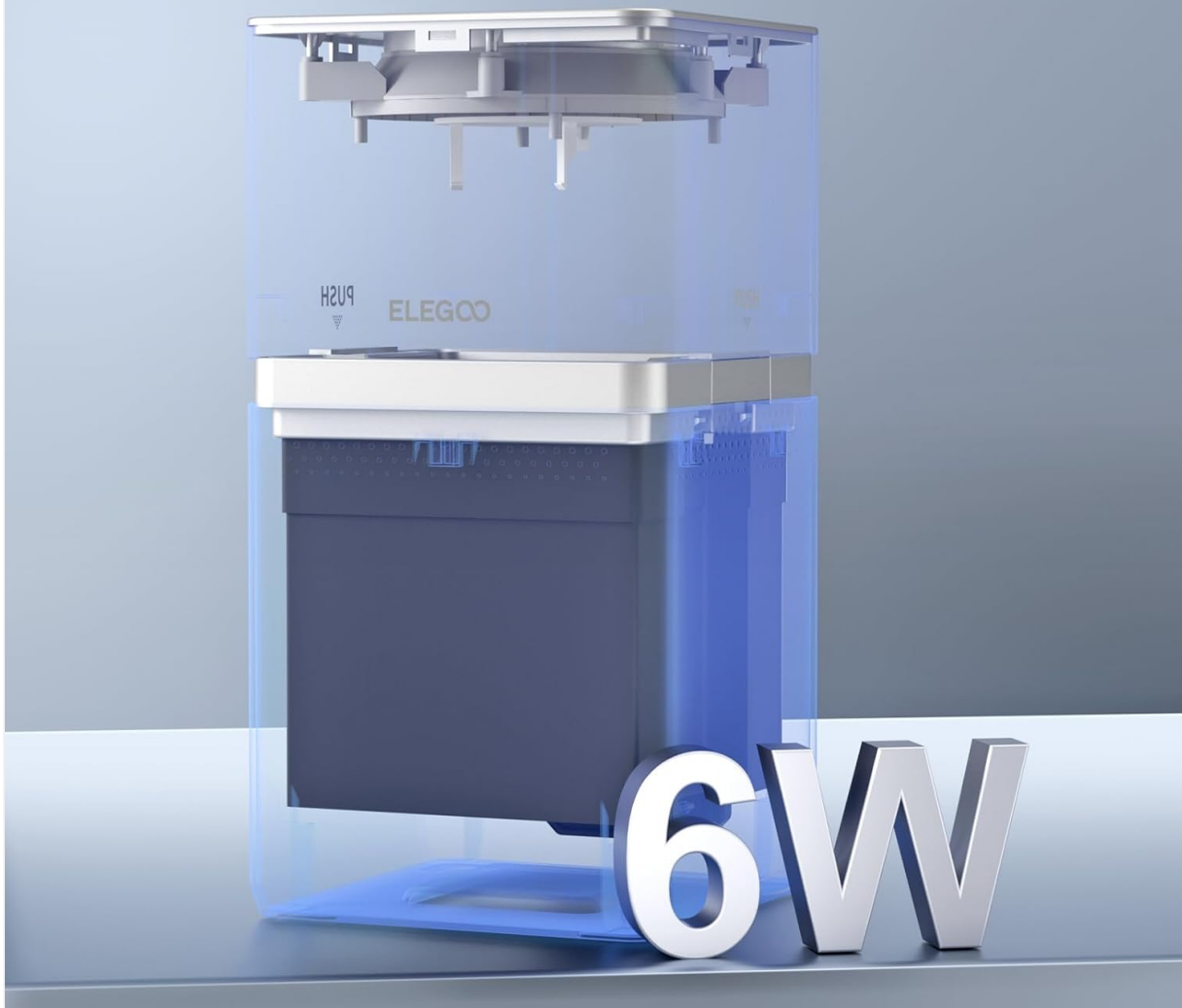


Image 7.2: The Mars Mate Air Purifier operates with ultra-low power consumption of 6 watts.

## 8. WARRANTY AND SUPPORT

---

For warranty information and technical support, please refer to the official ELEGOO website or contact ELEGOO customer service directly. Keep your purchase receipt as proof of purchase for any warranty claims.