

THIRDREALITY 3RSNL02043Z

THIRDREALITY Multi-Function Night Light User Manual

Model: 3RSNL02043Z

PRODUCT OVERVIEW

The THIRDREALITY Multi-Function Night Light is a versatile 3-in-1 device combining a motion sensor, an illumination sensor, and an RGB color night light. It also functions as a Zigbee repeater to extend your smart home network. Designed for easy installation and seamless integration into various smart home ecosystems, this device offers adjustable brightness and a wide spectrum of color choices to suit your preferences and needs.



Image: The THIRDREALITY Multi-Function Night Light shown alongside a smartphone displaying its control interface. The night light features a motion sensor and an RGB light strip at the bottom.

PACKAGE CONTENTS

- THIRDREALITY Multi-Function Night Light (1 Pack)
- Adapter (1)

SETUP AND INSTALLATION

The THIRDREALITY Multi-Function Night Light is designed for hassle-free setup. Please ensure you have a compatible Zigbee hub before proceeding, as it is required for smart system integration and is not included with this product.

1. **Unpack the Device:** Carefully remove the night light and adapter from its packaging.
2. **Plug In:** Insert the adapter into a standard electrical outlet. Then, connect the night light to the adapter.

3. **Pair with Zigbee Hub:** Follow the instructions provided with your specific Zigbee hub to initiate the pairing process. The night light should be discoverable by your hub.
4. **Configuration:** Once paired, use your Zigbee hub's application to configure the night light's settings, including brightness, color, and sensor functionalities.



Simply Design

Easy installation with durable materials

size: 2.6 x 1.6 x 2.5 inches

Illumination sensor

Motion Sensor

Adapter

RGB color night light

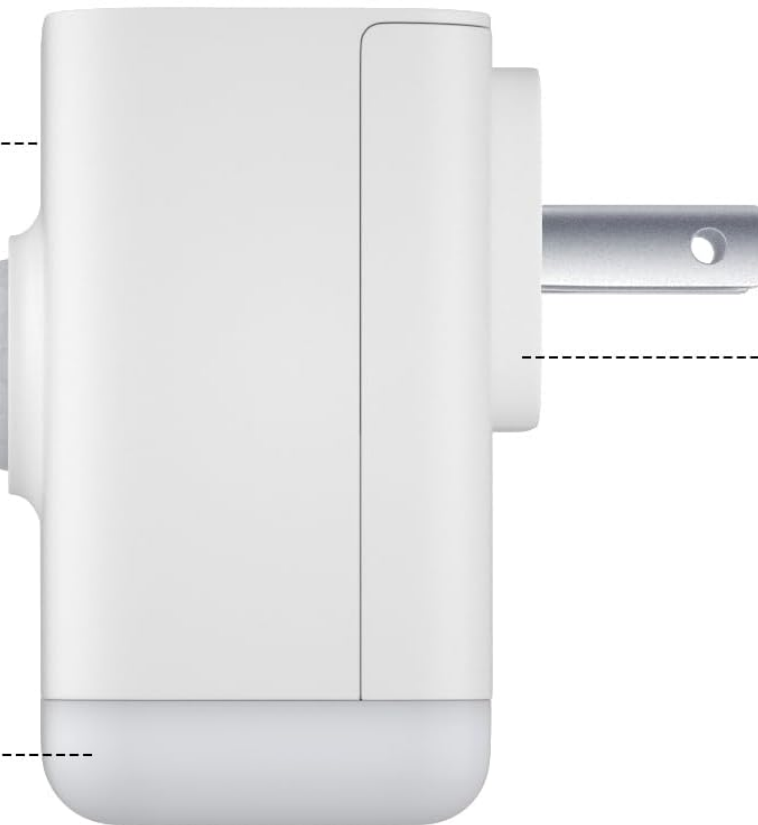


Image: A side profile of the night light, highlighting its key components: the illumination sensor, motion sensor, RGB color night light, and the adapter plug. Dimensions are also indicated as 2.6 x 1.6 x 2.5 inches.

OPERATING INSTRUCTIONS

The Multi-Function Night Light offers versatile operation modes through its integrated sensors and adjustable lighting features.

Lighting Modes

You can adjust the light color and brightness (1% to 100%) via your connected Zigbee hub's application. This allows for customization to match your preference or mood, from soft ambient light to bright functional illumination.

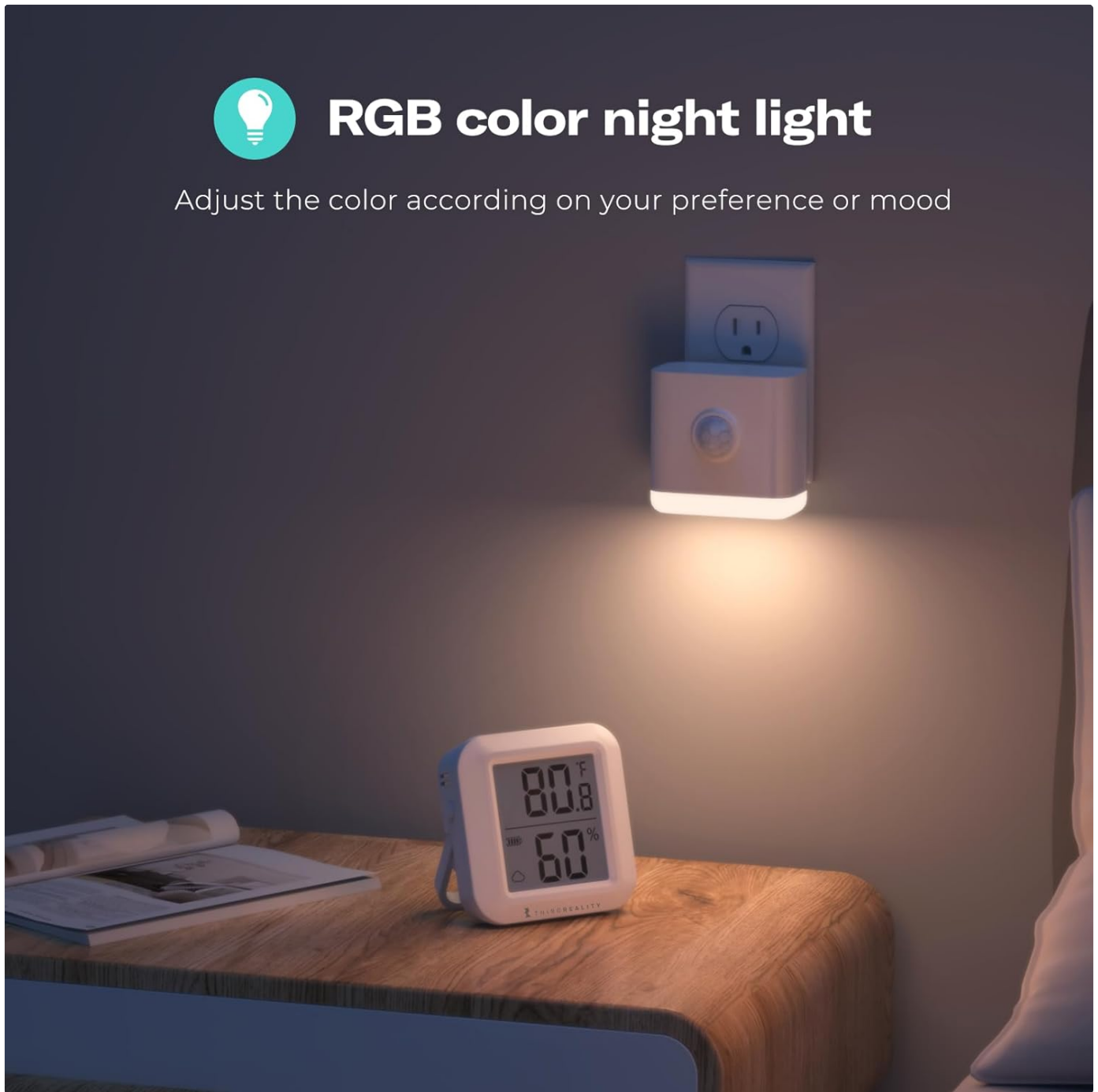


Image: The night light plugged into a wall outlet in a bedroom setting, emitting a warm, soft glow. A digital clock is visible on a bedside table, indicating the light's use in a personal space.

3-in-1 Multi-Functionality

Beyond being a smart night light, this device integrates a motion sensor and an illumination sensor. These sensors can be used to trigger other smart devices or automations within your Zigbee network. For example:

- **Motion Sensor:** Detects movement to automatically turn on the night light or activate other connected smart devices (e.g., hallway lights, security alerts).
- **Illumination Sensor:** Measures ambient light intensity, allowing for automations based on room brightness (e.g., turn on lights when it gets dark).
- **Zigbee Repeater:** Extends the range and stability of your Zigbee network, improving communication between your

hub and other devices.



Image: A conceptual diagram showing the three core functions of the device: RGB color night light, illumination sensor, and motion sensor, represented by icons.

Smart Assistant Integration

When enabled by a Smart Bridge MZ1 (sold separately), the night light can integrate with popular smart assistants such as Apple HomeKit, Google Home, and Amazon Alexa (smart speaker required), as well as SmartThings. This allows for voice control and advanced automation scenarios.

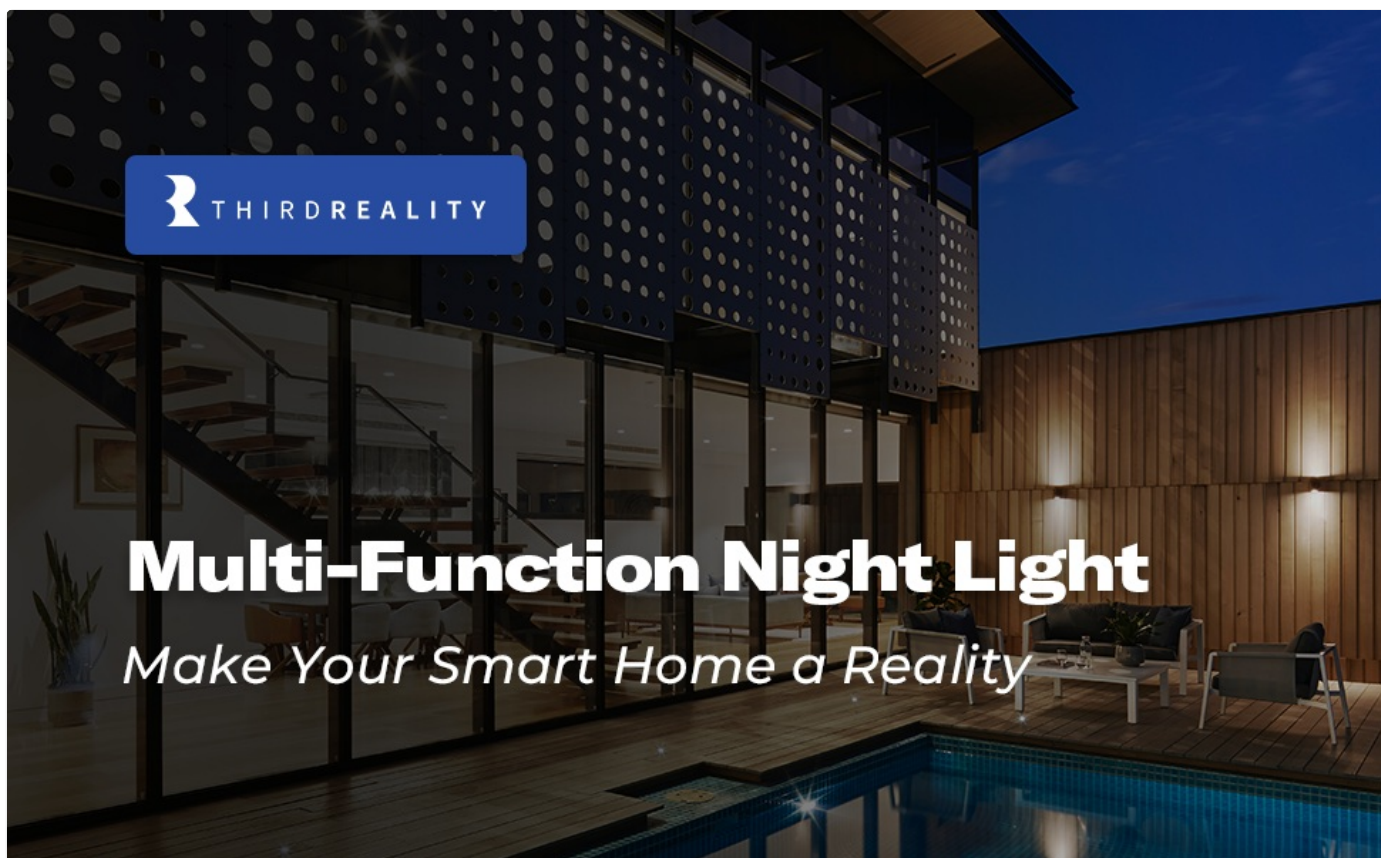


Image: A collage showing various application scenarios for the night light, including a living room with a smart display, a bathroom, and a kitchen, demonstrating its versatility in different home environments.

MAINTENANCE

The THIRDREALITY Multi-Function Night Light requires minimal maintenance. To ensure optimal performance and longevity:

- **Cleaning:** Gently wipe the device with a soft, dry cloth. Avoid using abrasive cleaners or solvents, as these can damage the surface.
- **Firmware Updates:** The device supports software OTA (Over-The-Air) updates. Check your Zigbee hub's application periodically for available firmware updates to ensure the device has the latest features and performance improvements.
- **Placement:** Ensure the device is placed in an area where its sensors are not obstructed for accurate motion and illumination detection.

TROUBLESHOOTING

If you encounter issues with your THIRDREALITY Multi-Function Night Light, please refer to the following common troubleshooting steps:

- **Device Not Responding:**
 - Ensure the device is properly plugged into a working power outlet.
 - Verify that your Zigbee hub is powered on and functioning correctly.
 - Check the connection between the night light and your Zigbee hub. You may need to re-pair the device if the connection is lost.
- **Motion Sensor Not Detecting:**

- Ensure the motion sensor lens is clean and unobstructed.
- Verify the device's placement. Large objects or furniture can block the sensor's field of view.
- Check the motion sensor settings in your Zigbee hub's application.

- **Light Not Changing Color/Brightness:**

- Confirm that the commands are being sent correctly from your Zigbee hub or smart assistant.
- Check for any conflicting automations or scenes that might be overriding your commands.

- **Zigbee Connectivity Issues:**

- Ensure the night light is within range of your Zigbee hub or another Zigbee repeater.
- Minimize interference from other wireless devices (e.g., Wi-Fi routers, microwaves).
- If persistent issues, try resetting the device (refer to your Zigbee hub's documentation for specific reset procedures for connected devices) and re-pairing.

For more detailed troubleshooting, you may refer to the official [User Guide \(PDF\)](#) or [Troubleshooting Guide \(PDF\)](#) available from the manufacturer, if provided.

[User Guide \(PDF\)](#) | [Troubleshooting Guide \(PDF\)](#)

SPECIFICATIONS

Feature	Detail
Brand	THIRDREALITY
Model Number	3RSNL02043Z
Product Dimensions	2.5 x 1.6 x 2.6 inches
Item Weight	4.2 ounces (0.12 Kilograms)
Power Source	Corded Electric
Connectivity Technology	Zigbee
Light Source Type	LED
Special Features	Energy Efficient, Motion Sensor, Illumination Sensor, RGB Color Night Light, Zigbee Repeater
Room Type	Baby, Bathroom, Bedrooms, Hallways, Kitchens
Material	Acrylonitrile Butadiene Styrene (Plastic)
Color	White
Indoor/Outdoor Usage	Indoor

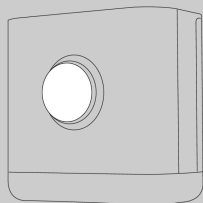
WARRANTY AND SUPPORT

THIRDREALITY products are designed for durability and long-term service. For specific warranty information, please refer to the documentation included with your purchase or visit the official THIRDREALITY brand store.

For technical support, product inquiries, or further assistance, please visit the [THIRDREALITY Store on Amazon](#).

Multi-Function Night Light

Quick Start Guide



Product Overview

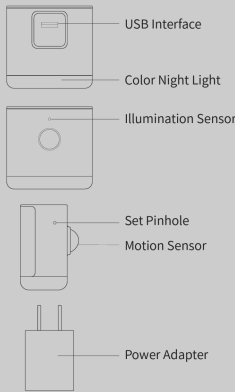
Third Reality Zigbee Multi-Function Night Light - a compact and intelligent solution combines a motion sensor, a light sensor and color night light. With remote control via Zigbee commands, it offers versatile automation options for security, lighting, and ambiance. Experience convenience and innovation in one device.

Note: The level of illuminance value is defined with reference to the lux value, not exactly the same.

What's In The Box

Multi-Function Night Light × 1
Power Adapter × 1
Quick Start Guide × 1

Product Details



Specification

Dimension	2.6 x 1.6 x 2.5 inches
Color	White
Input	DC 5V 0.5A
Material	Plastic

LED Status Table

A: BOOTUP LED Status

LED	Color Scheme	Comments
First Blink	Green is Local Routine Enabled Red is Local Routine Disabled	Short press the pin hole will change the Local Routine Setup Status
Second Blink	Yellow is not paired Warm White is paired	Long press the pin hole will reset the pairing status
Status Check	Not Paired: On <=5s is illumination > min	Illumination > min means environment is light need to turn off automatically

	On >5s is illumination <=min	illumination <= min means environment is dark need to keep on and then
	Paired: check report Status (First paired - Default blue on and dim 2 times)	If paired then go to RUNTIME status

B: Connect/Disconnect LED Status

LED	Color Scheme	Comments
Two Times	If LED is ON, dim two times (previous color) is indicate from disconnect to connect If LED is OFF, No Indication	The device will automatically Try reconnect
Three Times	If LED is ON, dim three times (previous color) is indicate from connect to disconnect If LED is OFF, No Indication	Long time has not been reconnected Try restarting your device or Hub

Setup

1. Plug the night light into a power outlet using a USB-A power adaptor, it initially lights up green and turns yellow, indicating it is in pairing mode.
Note: It will exit pairing mode automatically if not successfully paired within 3 minutes, to put it into pairing mode again, press and hold the reset button through the pinhole for 5 seconds until it turns red, then release, the device will be reset and re-enter pairing mode.)
2. Install the Zigbee hub & app on your device and log in, make sure the firmwares are up to date, and follow the instructions to set up the device.
3. Once the pairing is successfully completed, the night light dims in blue twice then turn solid blue. You can change its brightness and color in the app.
4. The motion sensor, illumination sensor, and color light of the multi-function night light will report their status information as individual sub-devices, facilitating the configuration of various routines and home automation tasks.

Local Routine

The product supports local routines where the light will turn on when both the illumination sensor and motion sensor meet the specified conditions (When the light is dim and detects human motion). Short press the reset button through the pinhole to enable or disable the local routine function. Pressing the button once and seeing a green light indicates that the feature is currently enabled. Pressing the button again and seeing a red light indicates that the routine is disabled.

In both enabled and disabled states, motion sensor, illumination sensor, and color light will be reported synchronously.

Note that if you turn your Multi-Function Night Light on or off using your app or voice, Local Routine will be disabled for 12 hours.

Pairing with Different Hubs

Before pairing, use a pin to press into the pinhole and hold for 5 seconds until the LED turns red, then release to set the Multi-Function Night Light into pairing mode; Make sure the your hub's firmware and phone apps are up to date.

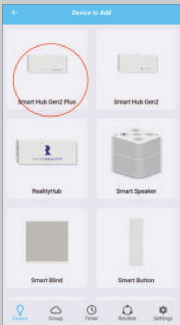
Pairing with Third Reality

Hub: Third Reality Hub Gen2 Plus
App: Third Reality

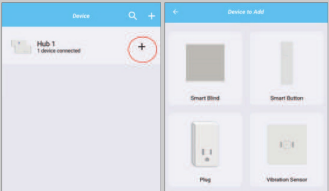


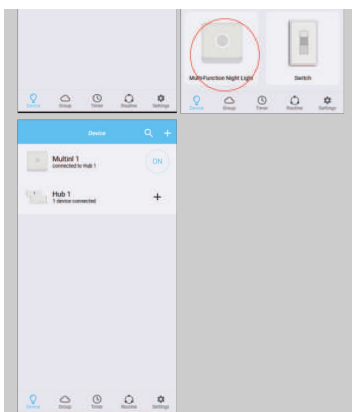
Pairing steps:

1. Tab "+" in Third Reality App, follow the on-screen instructions to add Smart Hub Gen2 Plus.

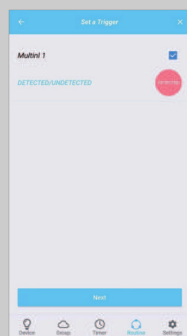


2. Tab "+" in the right of Smart Hub Gen2 Plus to add device, it will be added within seconds.





3. Create routines to use the motion sensor of the Multi-Function Night Light to control other connected devices.



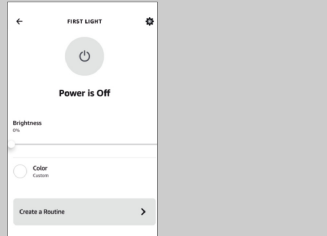
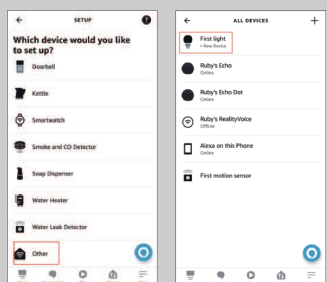
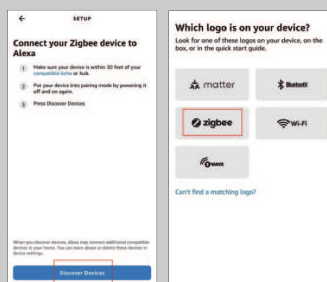
Pairing With Amazon Echo

Hub: Echo speakers with built-in Zigbee hub, Echo 4th Gen, Echo Plus 1st & 2nd Gen, Echo Show 10 2nd & 3rd Gen, Echo Studio
App: Amazon Alexa



Pairing steps:

1. Tab "+" in the Alexa App, choose "Zigbee" and "others" to add device, the Multi-Function Night Light will be added as the "First Light".
2. You can create routines with the "First Light".



[pdf] Quick Start Guide Specifications Guide

THIRDREALITY Multi Function Night Light Zigbee Repeater 3 in 1 Combines a Motion Sensor Illumination and RGB Color 100% Adjustable Brightness hub Required 3RSNL02043Z User Guide Third Reality Inc D1Sbl0OyNGL m media amazon images I |||

Multi-Function Night Light Quick Start Guide Product Overview Third Reality Zigbee

Multi-Function Night Light - a compact and intelligent solution combines a motion sensor, a light sensor and color night light. With remote control via Zigbee commands, it offers versatile automation options for secu...

lang:en score:21 filesize: 8.08 M page_count: 2 document date: 2023-07-24



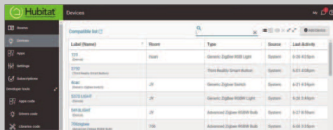
Pairing With Hubitat

Website: <http://find.hubitat.com/>



Pairing steps:

1. Tab "Add Device" in Hubitat Devices page.



2. Choose "Zigbee", then "Start Zigbee Pairing".



3. Type in a device and room name and click "Next" to complete pairing.

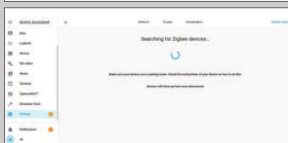
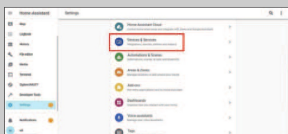


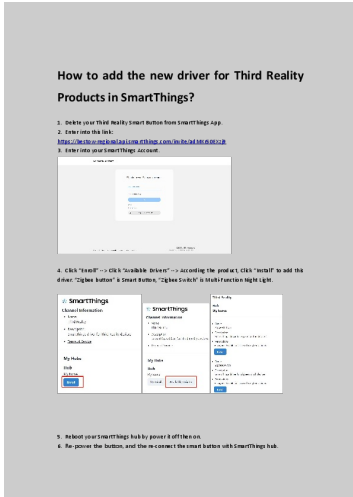
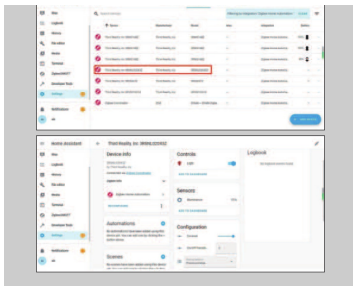
Pairing With Home Assistant



Pairing steps:

Zigbee Home Automation(ZHA)





[\[pdf\]](#) Installation Guide Frequently Asked Questions

Tina THIRDDREALITY Multi Function Night Light Zigbee Repeater 3 in 1 Combines a Motion Sensor Illumination and RGB Color 100% Adjustable Brightness hub Required 3RSNL02043Z FAQ Third Reality Inc 71qBWm7ngaL m media amazon images I |||

How to add the new driver for Third Reality Products in SmartThings 1. Delete your Third Reality Smart Button from SmartThings App. 2. Enter into this link: <https://bestow-regional.api.smartthings.com/invite/adMKr50EXzj9> 3. Enter into your SmartThings Account. 4. Click Enroll -- Click Available...

lang:en score:11 filesize: 193.16 K page_count: 1 document date: 2023-09-20