



Manuals.plus /

- › UCB /
- › UCB BR18-SH4Q Smart Bluetooth LED Bulb User Manual

UCB BR18-SH4Q

UCB BR18-SH4Q Smart Bluetooth LED Bulb User Manual

Model: BR18-SH4Q | Brand: UCB

INTRODUCTION

This manual provides comprehensive instructions for the installation, operation, and maintenance of your UCB BR18-SH4Q Smart Bluetooth LED Bulbs. These bulbs are designed for seamless integration with Amazon Alexa devices and offer advanced control features via the BRmesh application. Please read this manual thoroughly before use to ensure proper functionality and safety.



Image: Four UCB BR18-SH4Q Smart Bluetooth LED Bulbs, showcasing their standard A19 shape and E26 base.

SAFETY INFORMATION

- Ensure power is turned off at the switch before installing or removing the bulb.
- Do not use with standard dimmers. Dimming is controlled via the BRmesh APP or Alexa only.
- Suitable for indoor use only.
- Do not disassemble or modify the bulb.
- Avoid exposure to water or excessive moisture.

PACKAGE CONTENTS

- UCB BR18-SH4Q Smart Bluetooth LED Bulbs x 4
- User Manual x 1

SPECIFICATIONS

Feature	Detail
Model	BR18-SH4Q
Input Voltage	120V
Power Consumption	12W
Lumen Output	1300LM (130W Equivalent)
Color Temperature	2700K-6000K adjustable
Color Rendering Index (CRI)	>90
Bulb Shape Size	A19
Bulb Base	E26
Connectivity	Bluetooth 5.0 (No Wi-Fi or Hub required)
Control Method	Alexa Voice Control, BRmesh APP
Dimmable	Yes (1%-100% via App/Alexa)
Average Life	25,000 Hours
Material	Aluminum, Plastic
Product Dimensions	2.36"W x 4.84"H



Work with Alexa



120V/AC



12W
130W Equivalent



CRI >90



1300LM



APP control



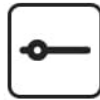
Timing function



Group control



No Flicker
No Buzzing



Dimmable the brightness
from 1% to 100%



Tunable white

(From 2700K to 6000K can be adjustable)

2700K ▶



5500K ▶



Image: A visual representation of the UCB Smart Bulb's dimensions (60mm width, 123mm height) and a summary of its features, including Alexa compatibility, 120V/AC input, CRI >90, APP control, timing function, group control, flicker-free operation, and 1-100% dimmability with tunable white light (2700K-6000K).

Standard Specification: **A19**



Image: A comparison illustrating the standard A19 bulb shape and dimensions, showing the UCB Smart Bulb alongside a traditional incandescent bulb for size reference.

SETUP INSTRUCTIONS

1. Physical Installation

1. Ensure the power to the light fixture is turned off at the wall switch.
2. Carefully screw the UCB Smart Bluetooth LED Bulb into a standard E26 light socket.
3. Turn on the power to the light fixture. The bulb should illuminate.

2. Pairing with Alexa

The UCB Smart Bulbs are designed to work exclusively with Amazon Alexa devices. No Wi-Fi or separate hub is required. The following Alexa speakers are supported:

- Echo Plus (all models)
- Echo Show (all models)
- Echo (all models except 1st Generation)
- Echo Dot (all models except 1st Generation)

There are two methods for pairing your bulbs with Alexa:

Method 1: One-Step Alexa Pairing

1. Install the smart light bulb and turn it off.
2. After 5 seconds, turn the smart light bulb on.
3. Say to your Alexa device: "Alexa, find device."
4. Alexa will confirm when the device is found. You can then use Alexa to control the light.

Note: *The Alexa speaker can add up to 4 lights at a time. Repeat the above steps for any remaining bulbs that are yet to be paired.*

Method 2: Pairing via BRmesh App (if Method 1 fails or for advanced features)

1. Download the "BRmesh" app from your smartphone's app store.
2. Open the BRmesh app and add your lights within the app.
3. Within the BRmesh app, tap "Activate Alexa" on the BRmesh APP.
4. Tap "OK, Understand, Proceed Step 1".
5. Select one light, then tap "Activate".
6. Tap "OK". (It is recommended to pair only one light at a time using this method).
7. Once paired in the BRmesh app, say to your Alexa device: "Alexa, find device."

Note: *If the BRmesh APP is no longer needed or desired, it can be deleted after pairing with Alexa without affecting the use of the light(s) with Alexa.*

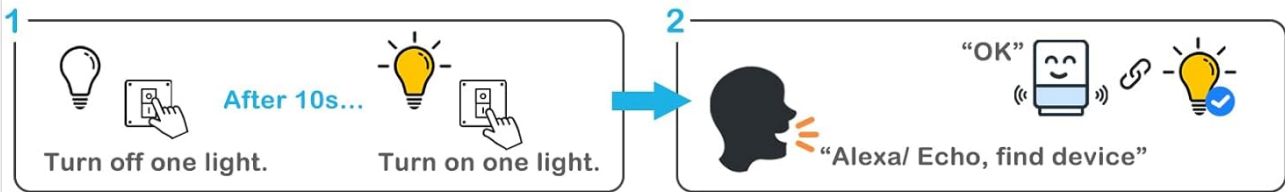


How to pairing with Alexa.

Echo Plus (all models) Echo (all models except 1st Generation)
Echo Show (all models) Echo Dot (all models except 1st Generation)



Method 1: (Only pair one light at a time)



(Please repeat the above steps to pair each light bulb with Alexa one by one)



If Method 1 fails, please use Method 2.

Method 2:

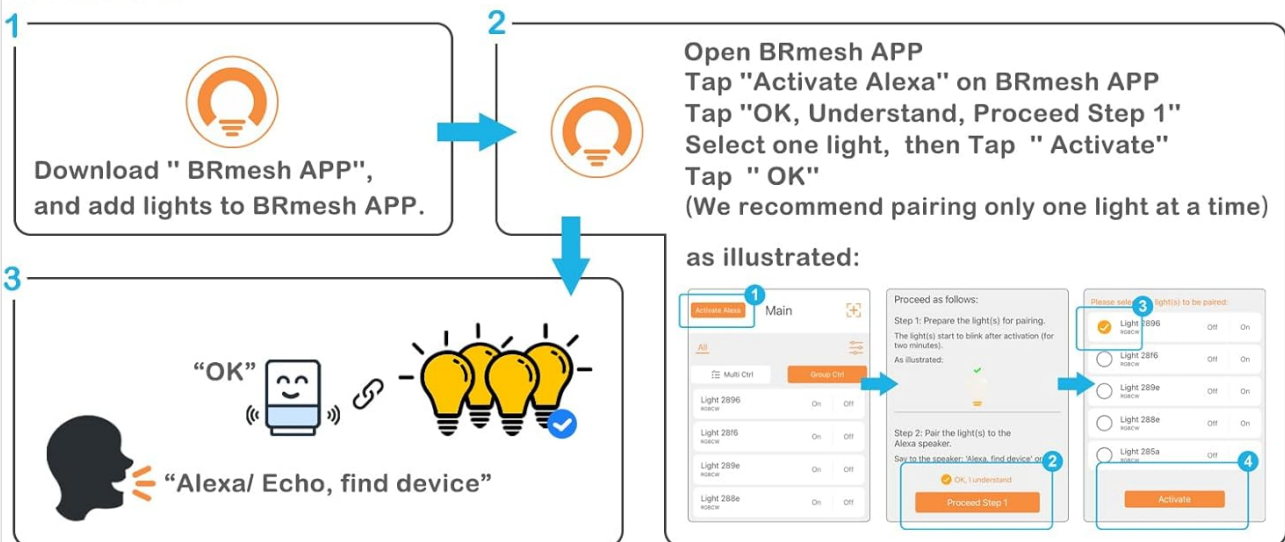


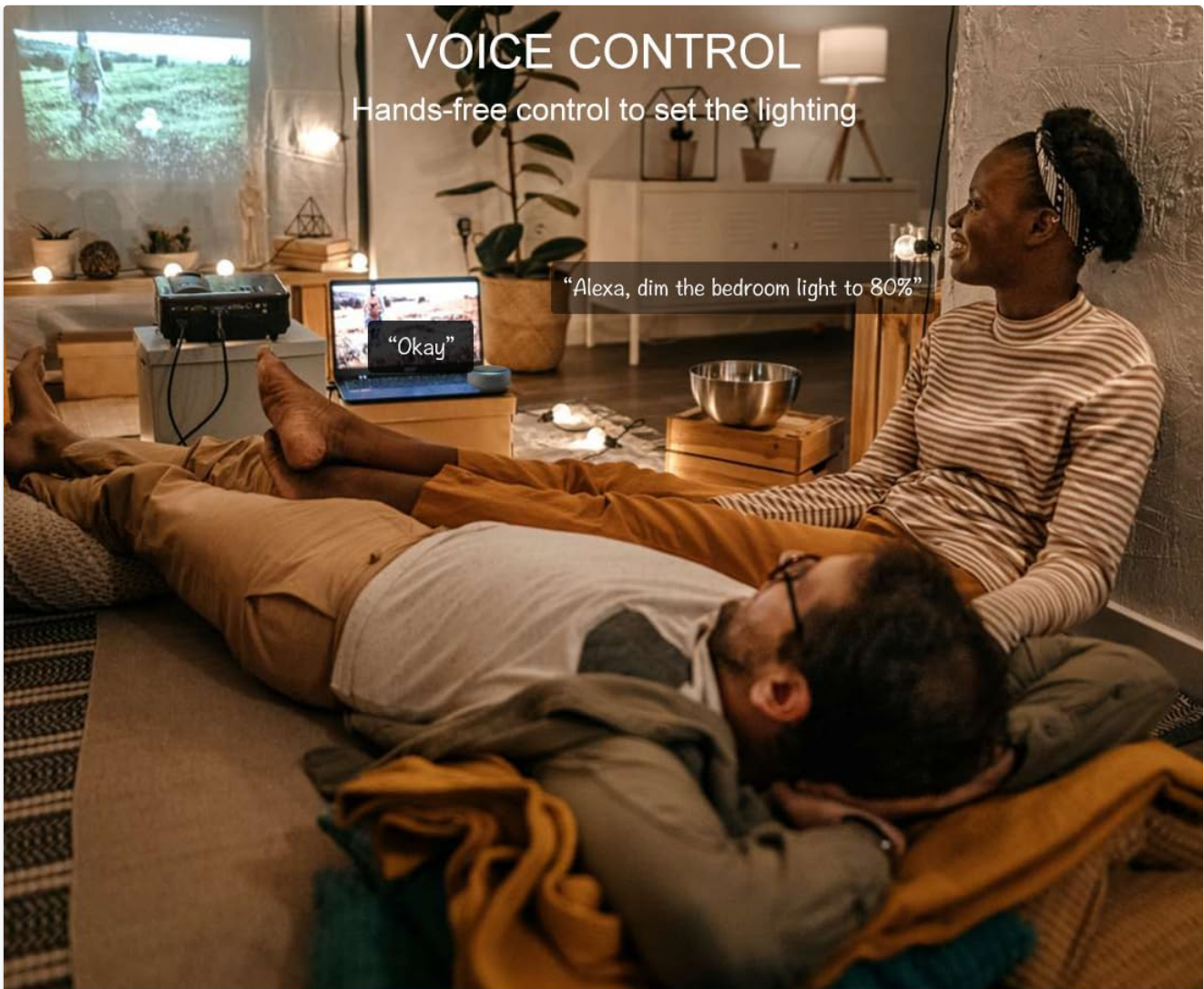
Image: A step-by-step visual guide demonstrating Method 1 (turning the light off and on, then using Alexa voice command) and Method 2 (downloading the BRmesh app, adding lights, and activating Alexa integration within the app).

OPERATING INSTRUCTIONS

1. Voice Control with Alexa

Once your UCB Smart Bulbs are paired with Alexa, you can use the following voice commands:

- **Turn On/Off:** "Alexa, turn on [Light Name]" or "Alexa, turn off [Light Name]"
- **Adjust Brightness:** "Alexa, set [Light Name] to [1-100]%" (e.g., "Alexa, set First light to 50%.")
- **Adjust Color Temperature:** "Alexa, set [Light Name] to warm white." (Other options: soft white, white, daylight white, cool white)
- **Find Devices:** "Alexa, find device." (Used during initial pairing or to discover new bulbs)



VOICE CONTROL

Hands-free control to set the lighting

"Alexa, dim the bedroom light to 80%"

"Okay"



The light bulb has Mesh function, which is an excellent solution for controlling multiple light bulbs.

Image: An illustration of a user interacting with an Alexa device to control lighting, demonstrating hands-free voice control functionality.

2. BRmesh App Control

The BRmesh app provides additional features not available directly through Alexa voice commands:

- **Fine-tune Color Temperature:** Adjust precisely between 2700K (warm white) and 6000K (cool white).
- **Timing Function:** Set schedules for lights to turn on or off automatically.
- **Group Control:** Control multiple bulbs simultaneously as a single group.
- **Single Control:** Control individual bulbs independently.
- **Scenes:** Create and activate custom lighting scenes (e.g., "Movie Night," "Reading").
- **Device Sharing:** Share control of your smart bulbs with family members.

Schedules and Timer

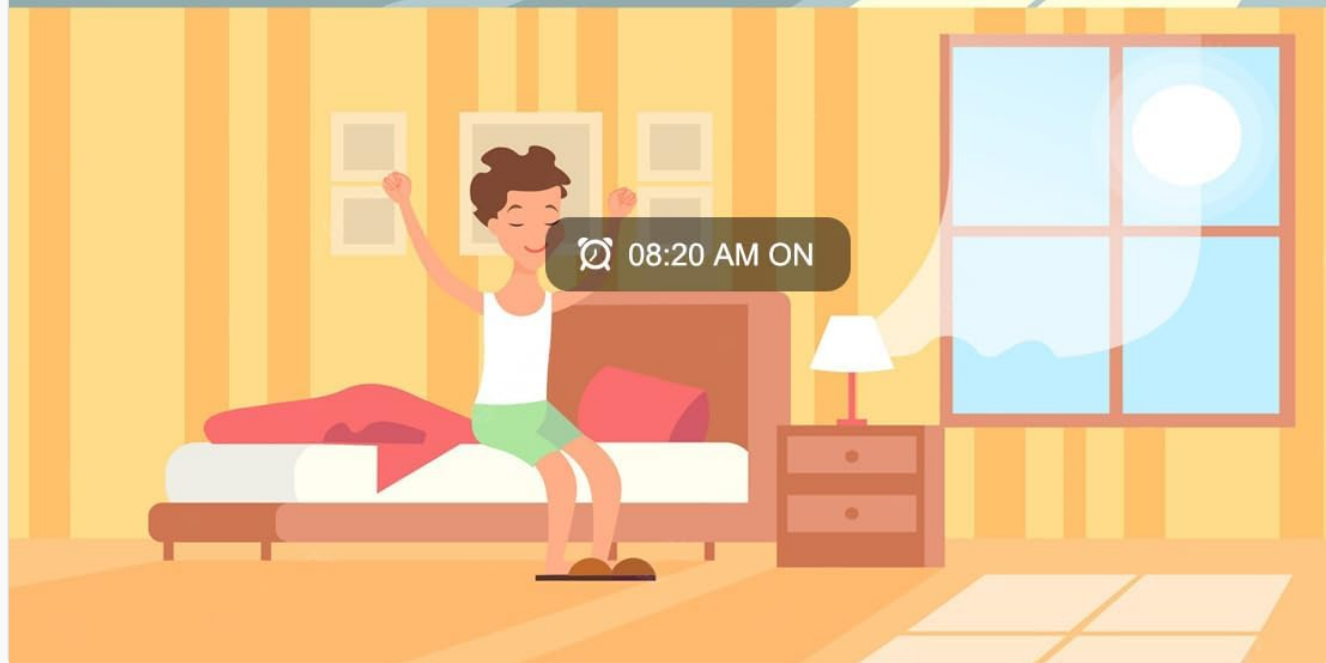
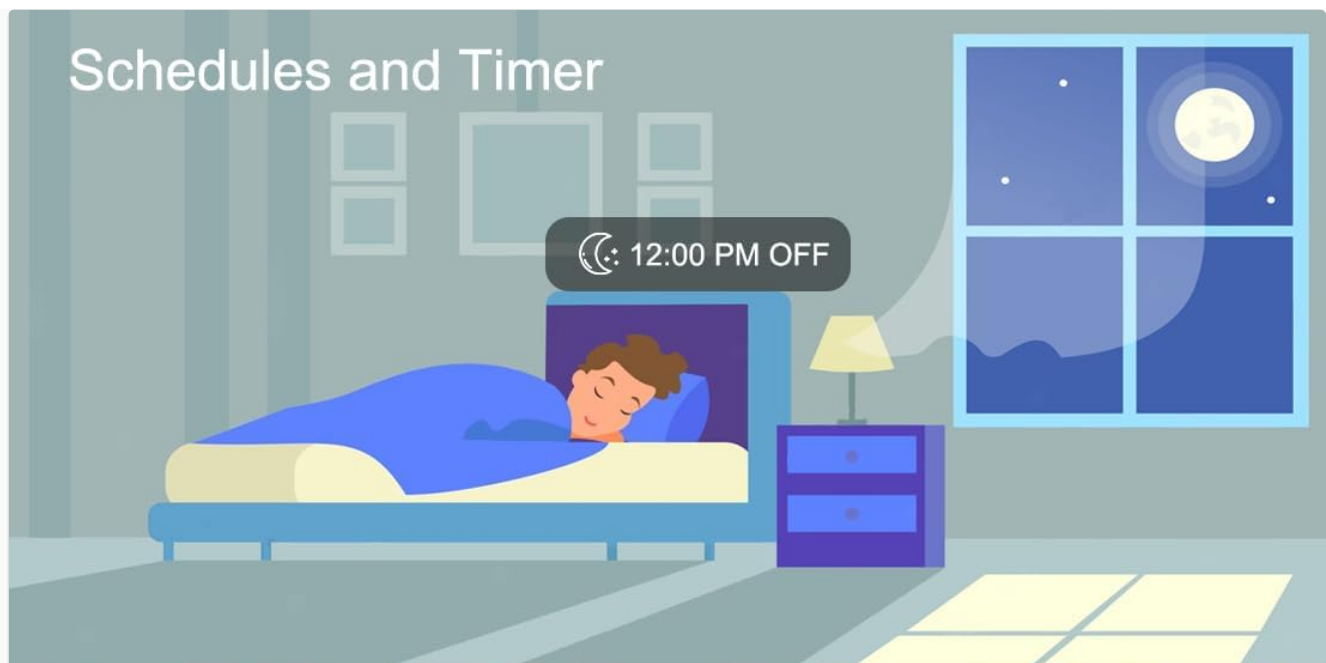
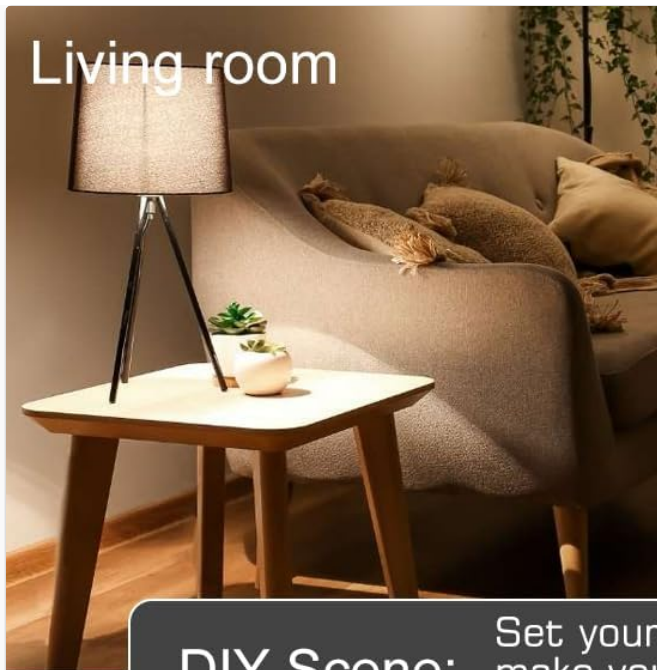
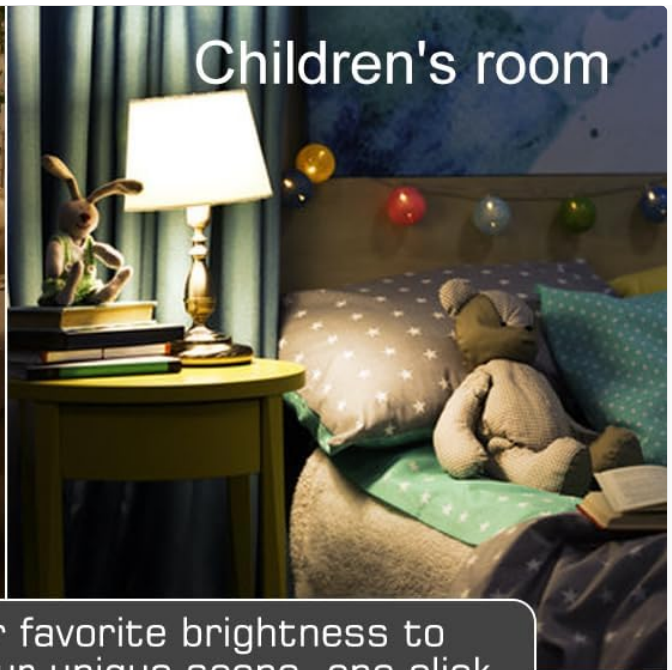


Image: Two illustrations depicting the scheduling and timer functions, showing a light turning off at 12:00 PM and turning on at 08:20 AM, demonstrating automated lighting control.

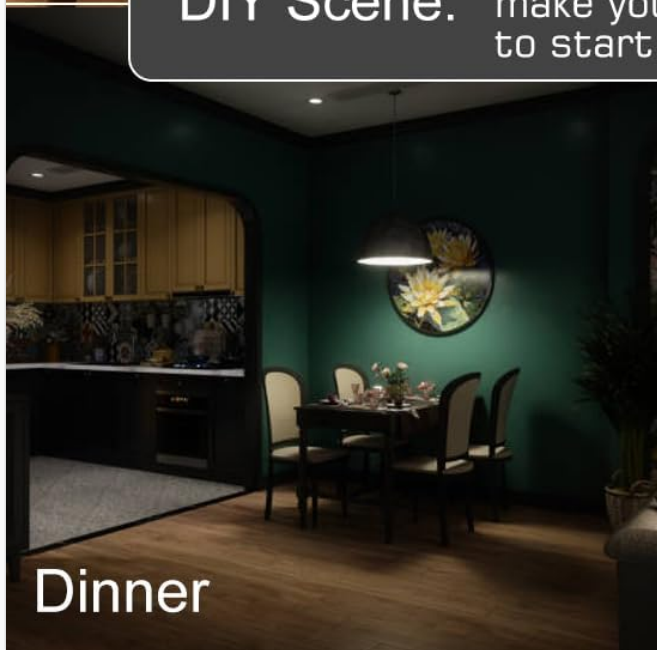


Living room

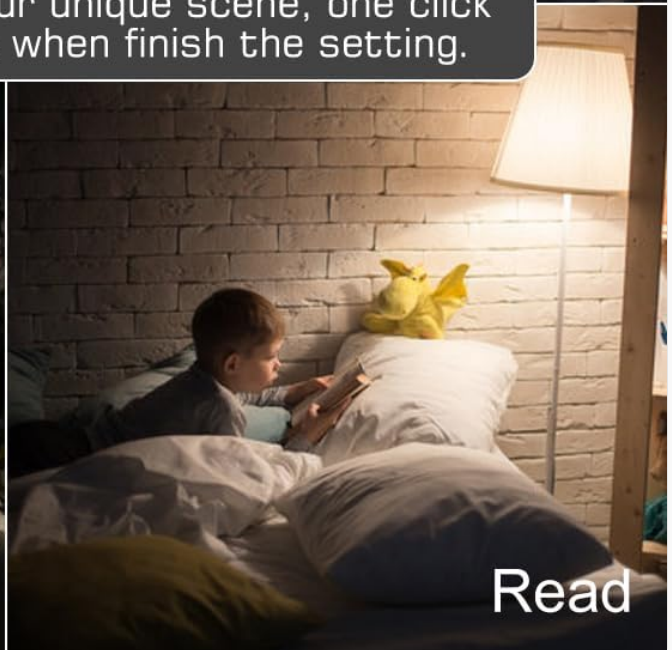


Children's room

DIY Scene: Set your favorite brightness to make your unique scene, one click to start when finish the setting.



Dinner



Read

Image: Four images showcasing different "DIY Scenes" in various rooms (living room, children's room, dining area, reading nook), illustrating how users can customize brightness and ambiance for specific activities.

ADVANCED FEATURES

- **Flicker-Free Technology:** Equipped with "PWM to Analog" technology, ensuring no flickering across the 1-100% dimming range. This is beneficial for eye comfort and photography.
- **Bluetooth Mesh Network:** Utilizes Bluetooth 5.0 chip for auto-interactions between bulbs, extending control distance and supporting a maximum of 100 devices.
- **Memory Function:** Bulbs retain their last setting (brightness and color temperature) when turned off and on.

Flicker-free



✔ Flicker free, eye-friendly.

✔ Videos and pictures have no flickering.

CRI > 90 No flickering when taking pictures under any conditions thanks to the latest "PWM to Analog" technology. Friendly to the eyes and to the photo taking lovers.

Image: A visual demonstrating the flicker-free feature of the UCB Smart Bulbs, showing a clear image on a phone screen when taking a picture of the illuminated bulb, indicating stable light output.

TROUBLESHOOTING

• Bulb not responding to Alexa:

- Ensure the bulb is powered on.
- Verify your Alexa device is online and within range.
- Try Method 1 pairing again: Turn the bulb off, wait 5 seconds, turn it on, then say "Alexa, find device."
- If issues persist, try Method 2 using the BRmesh app to pair the bulb, then ask Alexa to find devices.
- Confirm your Alexa device is a supported model (Echo Plus, Echo Show, Echo, Echo Dot - excluding 1st Gen models).

• Cannot connect to BRmesh App:

- Ensure Bluetooth is enabled on your smartphone.
- Make sure the bulb is powered on and within Bluetooth range of your phone.
- Restart the BRmesh app or your phone.

- **Flickering or inconsistent light:**

- Ensure the bulb is not connected to a traditional dimmer switch.
- Check for loose connections in the light fixture.

- **Bulbs turn on/off randomly:**

- Check your Alexa routines or "Away Lighting" settings, which might be configured to simulate occupancy.

WARRANTY AND SUPPORT

UCB provides a **2-year warranty** for these smart light bulbs. Additionally, a **90-day refund guarantee** is offered from the date of purchase. For warranty claims, technical support, or any inquiries, please contact UCB customer service through the platform where the product was purchased.