

## Phomemo T02

# Phomemo T02 Mini Sticker Printer User Manual

Model: T02 | Brand: Phomemo

## INTRODUCTION

The Phomemo T02 Mini Sticker Printer is a compact, inkless thermal printer designed for portability and versatility. It allows users to print photos, text, labels, and stickers directly from a mobile device via Bluetooth. This manual provides essential information for setting up, operating, maintaining, and troubleshooting your T02 printer to ensure optimal performance.

## WHAT'S IN THE BOX

Please verify that all items are present in your package:

- Phomemo T02 Pocket Printer x 1
- USB Charge Cable x 1
- Paper Holder x 1
- White Non-Adhesive Thermal Paper (one roll inside the printer) x 1
- User Manual x 1



Figure 1: Package Contents. The image displays the Phomemo T02 printer, a roll of sticker paper, a USB charging cable, and the user manual.

## SETUP GUIDE

### 1. Charging the Printer

Before first use, fully charge the printer using the provided USB cable. Connect the USB cable to the charging port on the side of the printer and plug the other end into a standard USB power adapter (not included) or a computer USB port. The indicator light will show charging status.

### 2. Installing the Paper Roll

1. Press the Printer Lid Button to open the printer lid.
2. Place the paper roll into the Paper Holder, ensuring the printing side of the paper faces upwards and feeds out from the top.
3. Insert the Paper Holder with the paper roll into the printer compartment. Make sure the paper edge extends slightly out of the printer's output slot.
4. Close the printer lid firmly until it clicks into place.

### 3. App Download and Bluetooth Connection

1. Download the official **Phomemo** app from the Apple App Store (for iOS devices) or Google Play Store (for Android devices).
2. Turn on the printer by pressing and holding the ON/OFF button until the indicator light illuminates.
3. Enable Bluetooth on your mobile device.
4. Open the Phomemo app. The app will automatically search for nearby Phomemo printers. Select 'T02' from the list to connect. The indicator light on the printer will confirm a successful connection.

Figure 2: Easy Setup Steps. This image illustrates the four simple steps to set up the Phomemo T02 printer: turning it on, installing the paper roll, ensuring the paper holder is correct, and connecting via Bluetooth in the Phomemo app.



Figure 3: App Download and Bluetooth Connection. The image shows the Phomemo app icon, links to download from the App Store and Google Play, and the Bluetooth connection symbol, indicating how to connect the printer to your mobile device.

## OPERATING INSTRUCTIONS

### 1. Basic Printing

Once connected, open the Phomemo app to access various printing functions:

- **Print Images:** Select an image from your gallery, adjust its size and position, then tap 'Print'.
- **Print Text/Notes:** Use the text editor to type or paste content. Customize fonts, sizes, and styles before printing.
- **Print Labels/Stickers:** Utilize the app's design tools to create custom labels or stickers.



Figure 4: App Interface and Printing Examples. This image shows the Phomemo app interface with options for printing images, notes, and templates, demonstrating the printer's use for various DIY printing tasks.

## 2. Using Templates

The Phomemo app offers a wide range of pre-designed templates for various purposes, including to-do lists, study notes, banners, and decorative elements. Navigate to the 'Templates' section in the app, select your desired template, customize it if needed, and then print.



### 3. Paper Compatibility

The T02 printer is compatible with various 53mm wide thermal papers, including white, color, clear, semi-transparent, gold, and silver stick paper. Ensure you use Phomemo-branded thermal paper for best results.

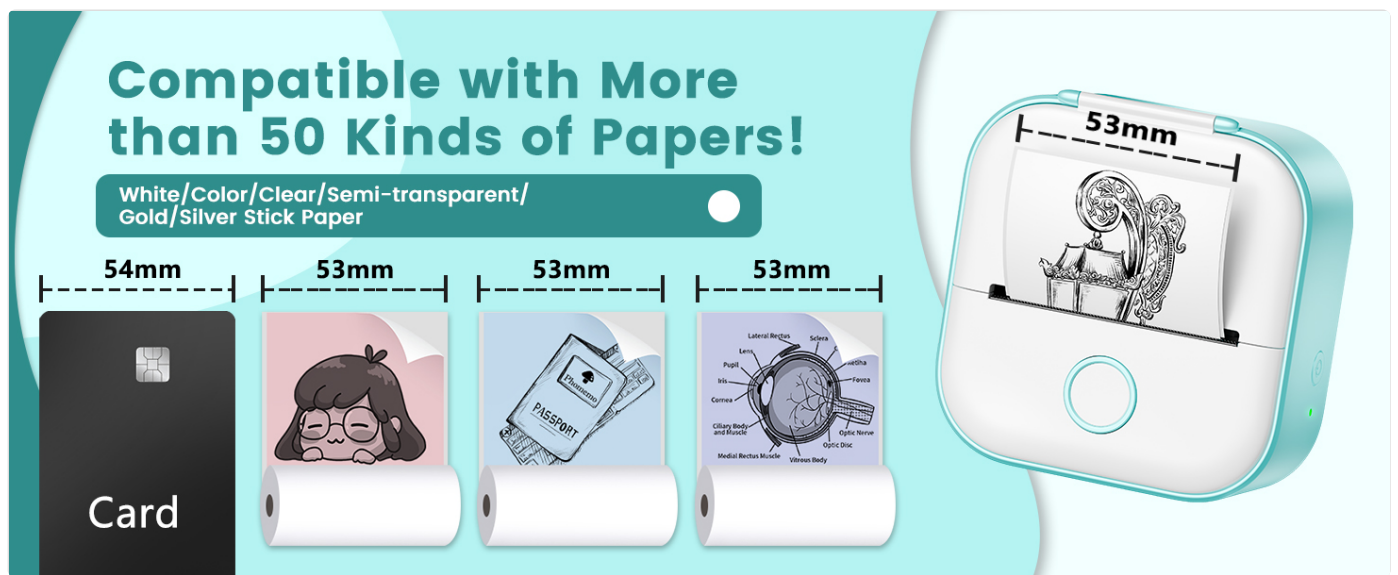


Figure 5: Compatible Paper Types. This illustration demonstrates the variety of 53mm wide thermal papers compatible with the Phomemo T02 printer, such as card, white, color, clear, semi-transparent, gold, and silver stick paper.

## MAINTENANCE

### 1. Cleaning the Print Head and Rubber Roller

To maintain optimal print quality, regularly clean the print head and rubber roller. Use a cotton swab lightly dampened with alcohol to gently wipe the print head and the rubber roller inside the printer. Ensure the printer is turned off before cleaning and allow it to dry completely before use.



Figure 6: Printer Components. This diagram identifies key parts of the T02 printer, including the rubber roller, which should be regularly cleaned for best printing results.

### 2. Paper Storage

Store thermal paper in a cool, dry place away from direct sunlight, high temperatures, and humidity to prevent fading or damage to the thermal coating.

### 3. Battery Care

To prolong battery life, avoid fully discharging the printer frequently. Charge the printer regularly, even if not in use for extended periods. Do not expose the printer to extreme temperatures.

## TROUBLESHOOTING

---

## 1. Printer Does Not Turn On

- Ensure the printer is charged. Connect it to a power source using the USB cable.
- Press and hold the ON/OFF button for a few seconds.

## 2. Poor Print Quality

- Clean the print head and rubber roller as described in the Maintenance section.
- Ensure the thermal paper is installed correctly and is not damaged or old.
- Check the battery level; low battery can affect print quality.



Figure 7: Print Quality Comparison. This image contrasts the clear and efficient output of the Phomemo T02 printer with less clear results, emphasizing the importance of proper maintenance for optimal print quality.

### 3. Bluetooth Connection Issues

- Ensure Bluetooth is enabled on your mobile device and the printer is turned on.
- Restart the Phomemo app and try connecting again.
- Make sure the printer is within the Bluetooth range (typically 5 meters).
- If issues persist, try resetting the printer using the Reset Button (refer to Figure 6 for location).

## SPECIFICATIONS

Feature	Detail
Model Name	T02
Brand	Phomemo
Printing Technology	Thermal
Connectivity Technology	Bluetooth
Printer Output	Monochrome
Maximum Color Print Resolution	203DPI
Maximum Black and White Print Resolution	203DPI
Maximum Media Size	53mm
Sheet Size	53 millimeters
Item Weight	8.8 ounces (0.25 Kilograms)
Product Dimensions	4 x 3 x 2 inches (4"D x 3"W x 2"H)
Batteries	1 Lithium Polymer battery (included)
Control Method	App
Hardware Interface	Bluetooth

## WARRANTY AND SUPPORT

### Warranty Information

The Phomemo T02 Mini Sticker Printer comes with a **limited warranty**. For detailed information regarding warranty coverage, terms, and conditions, please refer to the warranty card included in your package or visit the official Phomemo website.

### Customer Support

If you encounter any issues or have questions not covered in this manual, please contact Phomemo customer support. You can typically find contact information on the official Phomemo website or through the Phomemo app. For further assistance, please visit the [Phomemo Store on Amazon](#).

### Related Documents



## A281M/A282M/A285M Troubleshooting

### 1. Product Info

Accessories: A281M/A282M/A285M Troubleshooting Guide  
For more information, please refer to the following website:  
http://www.phomemo.com/faq/faq.html

Model	Weight	Dimensions
A281M	1.2kg	110x110x110mm
A282M	1.2kg	110x110x110mm
A285M	1.2kg	110x110x110mm

### 2. Product Usage

#### 1. Precautions

Read the manual carefully before using the printer.  
Do not use the printer in a wet or humid environment.  
Do not use the printer in a high-temperature or high-pressure environment.

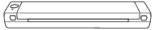
#### 2. Safety Precautions

Do not touch the printer when it is hot.  
Do not touch the printer when it is vibrating.  
Do not touch the printer when it is making noise.

## Guide de prise en main rapide

### M08F

Imprimante portable

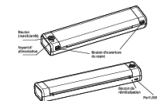


Veuillez lire attentivement le manuel et  
les conseils de sécurité pour éviter les blessures.

#### 01. Fourniture



#### 02. Description de l'imprimante



#### 03. Description de l'état de l'imprimante

Nom	État	Description de la fonction
Power button	Power button	Appuyer sur ce bouton pour allumer ou éteindre l'imprimante.
Power indicator	Power indicator	Indicateur lumineux qui s'allume lorsque l'imprimante est sous tension.
USB port	USB port	Port USB pour connecter l'imprimante à un ordinateur.
Paper slot	Paper slot	Slot pour insérer le papier.

#### 04. Fonction de l'imprimante

Fonction de l'imprimante	Description
Imprimer des photos	Imprimer des photos de 1024x768 pixels à 300 DPI.
Imprimer des documents	Imprimer des documents de 1024x768 pixels à 300 DPI.
Imprimer des étiquettes	Imprimer des étiquettes de 1024x768 pixels à 300 DPI.

#### 05. Attention

Ne pas utiliser l'imprimante si elle est endommagée ou si elle ne fonctionne pas correctement.  
Ne pas utiliser l'imprimante si elle est soumise à des températures extrêmes.  
Ne pas utiliser l'imprimante si elle est soumise à des vibrations ou à des chocs.

Ne pas utiliser l'imprimante si elle est soumise à des températures extrêmes.  
Ne pas utiliser l'imprimante si elle est soumise à des vibrations ou à des chocs.

#### 06. Instructions d'utilisation

1. Installation de l'imprimante  
2. Connexion de l'imprimante à un ordinateur

3. Impression de documents



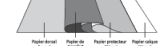
4. Impression de photos



5. Impression de documents



6. Impression de photos



7. Impression de documents



8. Impression de photos



9. Impression de documents



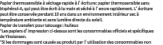
10. Impression de photos



11. Impression de documents



12. Impression de photos



13. Impression de documents



14. Impression de photos



15. Impression de documents

## Phomemo A281M/A282M/A285M Troubleshooting Guide

A comprehensive troubleshooting guide for Phomemo A281M, A282M, and A285M thermal printers, covering product information, usage, common machine and connection issues, printing problems, and app-related questions.

## Phomemo M08F Portable Printer Quick Start Guide




A quick start guide for the Phomemo M08F portable thermal printer, covering setup, operation, app installation, and troubleshooting.



Phomemo Mini Printer  
**Quick Start Guide**

Before using, please read this manual carefully and keep it properly for future reference.

**01. Packing list**

Printer*1	Power cord*1	Operating paper*1 roll	Bluetooth*1
			

**02. Machine description**

Printer component Machine body		Printer component Machine body	
Paper outlet Power button Power lighting button		Paper outlet Power button Power lighting button	

Power indicator status	Green lighting form	Steadily/Charging completed
Blue lighting	Green lighting	Charging
Red lighting	Red lighting	Red lighting
		Out of power

0.3 Precautions  
1. Please use the correct paper for printing, and it is recommended to use mobile phone power adapter for charging.  
2. Please connect the USB cable to the power adapter before charging. Please gently insert or unplug the USB cable when charging. Do not connect the USB from

Learn about setup, app connection, paper loading, printing functions, troubleshooting, and warranty information.

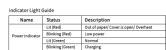
## Quick Start Guide

# M08F

Phonemio A4  
Portable Printer



## 01. Package Contents



### 03. Precautions

- ▶ Please use the V201 only for charging, and do not use multiple phone chargers together for charging.
- ▶ Please do not plug the USB cable to the power adapter before charging. Please gently connect the charging cable to the power adapter, in present situation there are two different types of USB cables, please make sure the USB cable is connected to the correct power adapter.
- ▶ In order to avoid electric shock, do not use or charge in the environment of high temperature, humidity, lightning stroke and dust, such as in bathroom, classroom, near to open flame, etc.
- ▶ Do not touch the power adapter before or after charging.
- ▶ Do not touch the power cable to prevent a possible accident by overheating.
- ▶ Please do not try to modify, disassemble or attempt to repair the power adapter.
- ▶ If the machine is malfunctioning, turn the power back to restart the machine.

### Battery warning instructions

- ▶ Do not use the battery in the following cases:
  - ▶ Do not use the battery in a high temperature environment, and it is strictly prohibited to use the battery in a high temperature environment.
  - ▶ Do not use the battery in a high humidity environment, and it is strictly prohibited to use the battery in a high humidity environment.
  - ▶ Do not use the battery in a high pressure environment, and it is strictly prohibited to use the battery in a high pressure environment.
  - ▶ Do not use the battery in a high vibration environment, and it is strictly prohibited to use the battery in a high vibration environment.
- ▶ There is a danger of explosion if the battery is replaced by the wrong type. The same is dangerous if the battery is not properly disposed of.
- ▶ If you want to use a power adapter for power supply, they should purchase a power adapter with the same output voltage as the power adapter of the device.

## 04. instruction Guide

4.3 Connect the printer to the App

Turn on your phone's Bluetooth and open your PhormoApp. Press the button on the top right of your PhormoApp home page and select 'WiFi' from the list.

Android users need to enable permission and allow app to obtain relevant permissions. (Detailed 3)

Enable phone's printer's power button to print a QR code. Open your PhormoApp and press the button on the top right of your PhormoApp home page (see the selection page, press icon and scan the QR code to connect to the printer).



The diagram shows a top-down view of a printer. A horizontal line at the top is labeled 'Paper output direction' with an upward-pointing arrow. A horizontal line at the bottom is labeled 'Feed direction' with a downward-pointing arrow. The printer has a central slot for paper and a control panel on the right side.

#### 05. How to Download and Install Driver

## 06. Official Printing Paper Type

## 07. After-sales Service

**OB FCC Warning**

This device complies with part 15 of the FCC Rules. Operation is subject to the following two conditions: (1) This device may not cause harmful interference, and (2) this device must accept any interference that may be received, including interference from licensed radio stations. Any changes or modifications not expressly approved by the party responsible for compliance may void the user's authority to operate the equipment.

This equipment has been tested and found to comply with the limits for a Class B digital device, pursuant to part 15 of the FCC Rules. These limits are designed to provide reasonable protection against harmful interference in a residential installation. This equipment generates and can be used to receive radio frequency energy and, if not installed and used correctly, may cause interference to radio communications. However, there is no guarantee that interference will not occur in a particular installation. If this equipment does cause harmful interference to radio or television reception, which can be determined by turning the equipment off and on, the user is encouraged to try to correct the interference by one or more of the following measures:

- Reorient or relocate the receiving antenna.
- Increase the separation between the equipment and receiver.
- Connect the equipment into an outlet on a circuit different from that to which the receiver is connected.
- Consult the dealer or an experienced radio/television technician for help.

If these measures do not solve the problem, the user is advised to contact the dealer or an experienced radio/television technician for help.

## 09. Warranty Card

<input type="checkbox"/> Return		<input type="checkbox"/> Exchange		<input type="checkbox"/> Repair	
User info	Name:		Gender:		Phone:
	Address:				
Product info	Purchase date:				
	Product order number:				
	Product serial Number:				
Requirements of return (replacement/repair)	Reason description:				
Maintenance record	Failure codes:		Maintenance person:		
	Handling situation:		Delivery date:		

A quick start guide for the Phomemo M08F portable printer, covering package contents, printer components, usage precautions, installation of the app and consumables, connection methods, driver installation, paper types, after-sales service, and FCC warnings.



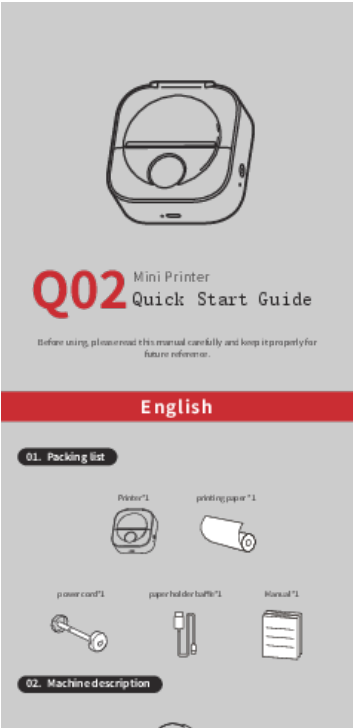
Documents - Phomemo – T02



[Phomemo Mini Photo Printer T02 User Manual and Guide](#)

Comprehensive guide for the Phomemo Mini Photo Printer T02, covering setup, app connection, paper replacement, printing guidelines, and troubleshooting.

lang:nl score:36 filesize: 568.42 K page\_count: 32 document date: 2023-07-10



Cover opening button

Reset key

USB port

Paper outlet

Power button

Power indicator

Power indicator status description

Power indicator	Light(Green)	Charging completed
	Blinking(Green)	Charging
	Light(Red)	Fault out of paper/overheated
	Blinking(Red)	Low power

### 03. Precautions

- Please use 5V mobile power for charging.
- Please connect the USB cable to the power adapter before charging, please gently insert or unplug the charging cable when charging, to prevent excessive force from damaging the port.
- After the charging is completed, please unplug the charging cable in time.
- In order to avoid damage, disassemble or charge in the environment of high temperature, high humidity, heavy smoke and dust such as bathroom, steam room, near incense burner, etc.
- Improper charging may cause damage to the print head.
- Do not touch the print head to prevent scalding caused by overheating.
- The hot requirement is strong, please be careful to avoid discomfort by mistake.
- If the machine is malfunctioning, insert the reset hole to reset the machine.

### Battery warning instructions

\* It is forbidden to disassemble, hit, squeeze the battery, or throw it into fire;  
 \* If smoke/smell occurs, please do not touch;  
 \* Do not place in a high temperature environment, and it is strictly prohibited to use the battery after swelling/increase;  
 \* There is a danger of explosion if the battery is replaced by the wrong type. Be sure to dispose of the used battery according to the instructions;  
 \* If consumers use a power adapter for power supply, they should purchase a power adapter that meets the requirements of corresponding safety standards or a power adapter with CCC certification.

### 04. APP download method

Please search for "Phomemo" in APP store, download and install it.

Search for Phomemo in the Apple App Store, click to download and install.

Search for Phomemo in the Google App Store, click to download and install.

### 05. App connect method

- Please charge the printer for the first use, and then press and hold the power button for about 3 seconds to turn it on.
- Connect the machine.

**Method 1:**  
 Turn on the Bluetooth of a phone → open the Phomemo APP → click the icon in the upper right corner of Phomemo APP main interface → select Q0 in the list to connect → complete the machine connection

**Method 2:**  
 After starting up, double click the start-up button printing QR code → scan the code in the Phomemo APP to connect

\* Tips: User can view the usage tutorial in the APP, and connect the machine according to video operation.

### 06. How to replace the printing paper

- Open the top cover and take out printing paper
- Remove the adaptor on the left side
- Load the printing paper
- Install the adaptor on the right side
- Put the printing paper into the paper compartment of the machine and close the top cover.

\* Tips: How to distinguish the front and back of printing paper  
 ① Take out a printing paper and use your nails to scratch the paper firmly, and distinguish whether color side up.  
 ② Please make sure that the smooth surface is facing up and aligned with the printing part.

### 07. Warranty description

100% warranty within 1 year

\* Although the product has undergone strict testing and quality inspection, accidents may occur during transportation, resulting in damage to the machine. If there is any problem with the printer, please contact us through the following methods. We have a quick response after sales team to solve the problem professionally.

\* If the problem is still not solved through our joint effort, we will replace you with a new machine for free, and you need not to pay anything. Your satisfaction makes us advance.

### 08. After-sales information

Online Contact information:

WhatsApp: +86 15320308294  
 Skype: Phomemo Team Jennie  
 Email: support@phomemo.com  
 Wechat: +86 15320308294  
 Phomemo Team Helen  
 Website: www.phomemo.com

Customer Service phone number: +1 855 857 5524 (US only)  
 Service time: Mon-Fri 9:00-18:00 (EST) for any questions/suggestion

\* **Notice:** Please search for "Phomemo" to get the printer operation guide.

### 09. Warranty card

☐ Return ☐ Exchange ☐ Repair

User Info	Name: Gender: Phone:	
Product Info	Address:	
	Purchase date:	
	Product order number:	
Requirements of return (replacement/repair)	Product Serial Number:	
	Reason description:	
Maintenance records	Return conditions:	
	Maintenance person:	
	Handling situation:	Delivery date:
	Maintenance ticket number:	Delivery date:

### 10. Official Thermal Paper Type

- Full proof thermal sensitive paper: High brightness A contained. Have a certain degree of water resistance.
- Colored paper: High brightness A contained. Include yellow, pink and blue paper.
- Adhesive paper: High brightness A contained. The printing paper has adhesive on one side, which can be directly pasted and used.
- Semi-permeable transparent thermal sensitive paper: High brightness A contained. Water proof, oil proof and scratch resistant; excellent photo taking effect.

\* The aforementioned printing paper is an official approved consumable.

\* If you fail to use the official consumable, causing the printer to malfunction, you will not be entitled to enjoy the "three guarantee" policy.

## [\[pdf\]](#) User Manual Quick Start Guide Guide

T02 Phomemo 1 20230831 Before using please read this manual carefully and keep it properly for future reference Quick Start Guide Q02 English 01 Packing list Printer\*1 printing 91WOTqM0crLm media amazon images | 91WOTqM0crL ref dp product quick view ||| Q02 Mini Printer Quick Start Guide Before using, please read this manual carefully

## 11. Specific function operation guidelines

### 11.1 Print Images operation guidelines

Steps:

- ① Select the "Print Image" function in Phoenix APP
- ② Add the photos you need to print
- ③ Set the pictures in the scale bar area. You can change the pictures, modify the pictures, adjust the brightness, contrast, or rotate and crop the pictures
- ④ Choose the photo printing density. Printing density: Fine, Medium, Thick, Distorted
- ⑤ Select the "Print" button in the lower right corner to complete picture printing

### 11.2 Graphic operation guidelines

There are a large number of hand-painted original materials in the material library. Various personalized editing can be performed under this function. The operation steps are as follows.

- ① Select the "Graphic" function in Phoenix APP
- ② Click on Graphic to enter the editing area
- ③ In the "Functional Area", you can add text, tables, pictures, videos, and QR code function for personalized editing, and the edited content will be displayed in the "Editing Area".

Features	Instructions
Text	Select the "Text" option to insert text into the body for editing, and you can edit any content; font and alignment are optional;
Table	Select the "Table" option to insert a table into the editing area for editing.
Image	Select the "Image" option to insert a picture into the editing area for editing or printing.
Image	Select the "Image" option to insert an image into the editing area for editing or printing.
QR code	Select the "QR code" option to enter the editing area, you can enter any text, and the entered text will be output in the form of a QR code.

④ After editing the content, click the print icon  in the upper right corner to complete printing.

\*Tip: You can view the operating tutorial in the APP, and connect the machine according to the video tutorial.

### 11.3 Windows application document printing operation guidelines

Select the "Print Word" function in the Phoenix APP, and after entering the web address, you can click the print button on the page to print the information of the word page.

\*Tip: You can view the operating tutorial in the APP, and connect the machine according to the video tutorial.

## 12. Common problems and solutions

Features	Instructions	Instructions
Half margin of page print	1. The paper roll holder is not installed correctly. 2. The machine print head cannot rebound.	Reinstall according to the instructions of paper roll holder. Press the print head to rebound.
Machine can't be charged	1. Can't charge 2. The charger is heated 3. Unable to activate	Connect the machine, check the battery capacity at the Bluetooth connection in the upper right corner. You can check the remaining power of the machine. Use the 5V/1A charging cable to charge. Under normal circumstances, the machine can be fully charged in 2-3 hours. Do not leave the battery uncharged for a long period of time (about three months), as this may cause the battery to wear out naturally and fail to activate charging.
Machine indicator flashes fast No response after long pressing the power button	1. The battery is less than 10%. 2. The machine has no power	The indicator light will flash quickly. Charge it for half an hour and then turn it on.
Upper and lower covers are stuck when opening	1. The upper and lower covers of the machine have a running-in period	Cover all the time back and forth.
Cannot connect to machine's Bluetooth	1. Machine Bluetooth is not turned on 2. APP can't find the machine	Turn on the phone's Bluetooth (Bluetooth cannot turn on automatically, you need to turn it on manually). The machine must be turned on. Turn on the machine to a connected state.
5. Mobile phone print permission is not turned on	Double-click the printer power button to print the QR code, scan the code directly to connect to the printer.	For Android phones, open the phone permission permission.
The machine doesn't print	1. No words on the paper 2. System bug 3. There are black bars	The paper roll is loaded upside down, resulting in the printing side of the paper roll (lower roll roll) not in place; all paper rolls shall be installed with the printing side facing up. Restart phone. The paper is loading and jammed. Please take out some paper.
Paper jam when printing	4. Indicator flashes	No electricity. Charge the machine (half an hour).
APP shows the printer is out of paper	1. The paper roll is loose and jammed 2. The machine has foreign objects	Reinstall the paper roll; the paper roll is not pulled to the paper outlet; pull the paper roll out by a screwdriver, preferably beyond the paper outlet. Remove the support of paper roll, manually unfold the paper roll and then install the support or directly put in the paper roll support. Open the paper compartment of the machine and clean the inner compartment.
Printing is completed, but the paper printed has no content	1. No paper 2. The sensor cannot recognize 3. System bug	Reinstall the paper roll; the paper roll is not pulled to the paper outlet; pull the paper roll out by a screwdriver, preferably beyond the paper outlet. The printer detects a paper sensor failure; clean the sensor with an alcohol swab; cotton swabs. Uninstall and reinstall.
Blank printing	1. The paper roll is loaded upside down 2. The paper roll holder is not installed correctly 3. Paper roll separation hole 4. Low power 5. Paper roll has been left in air for a long time	Take out the paper roll and use your finger to feel the bottom of the paper and install with the roll or side facing up. Reinstall according to the instructions of paper roll holder. Take out the paper roll and cut off the unrolled part, reinstall for printing. The cover of machine has not closed tightly. Replace the cover and press the cover firmly with palms. No power. Charge and then print. Adjust the print density to the highest. Damp paper roll, leaving in machine in air for a long time may cause blank printing. Use and paper rolls wrapped in sealed bags or boxes.
Printed font is different from roll font	1. When printing the same content with different mobile phones, the fonts are different	Due to different phone models and versions, the printed font will be different; set the phone system font as the default font.
Faded font on paper roll		There is some blue paper cannot be printed with blue. Edit the records before printing, and try to avoid using all kinds of pens or gel pens in the printing paper after printing. Avoid high temperature, humidity, or alcohol, disinfectant, sweat on your hands, or hand sanitizer will affect the fading of words. Please choose to use digital printed paper; the printing paper is a dry environment; After printing, the printed surface should not be in contact with another printed surface or transparent bag for storage. Please need to stick the printing paper, please cut out the official paper with a sharp knife. Some official websites will adjust as well as calculate the fading.

## 13. FCC Warning

FCC Warning statement:

This device complies with part 15 of the FCC Rules. Operation is subject to the following two conditions: (1) This device may not cause harmful interference, and (2) this device must accept any interference received, including interference that may cause undesired operation.

and keep it properly for future reference. English 01. Packing list Printer\*1 printing paper \*1 power cord\*1 paper holder baffle\*1 Manual\*1 02. Machine description Cover opening button Reset key USB port Page...

lang:en score:34 filesize: 687.35 K page\_count: 1 document date: 2024-04-16







1. Open the top cover and take out printing paper.

2. Remove the adjuster on the right side.

2. Load the printing paper.

4. I install the adj.  
on the right side

5. Put the printing paper into the paper compartment of the machine and close the top cover.

- Take out a printing paper and use your nails to scratch the paper firmly and then orient it with the color side up.
- Please make sure that the smooth surface is facing up and aligned with the printing port.

☐ Return      ☐ Exchange      ☐ Repair

User Info	Name:	Gender:	Phone:
Product Info	Address:		
	Purchase date:		
	Product order number:		
	Product Serial Number:		
Requirements of return (replace, return, repair)	Reason description:		
Maintenance on site	Failure condition:		Maintenance on person:
	Handling situation:		Delivery date:
	Maintenance on location on date:		Delivery date:

① Tri-proof thermo-sensitive paper; No bisphenol-A contained. Have a certain degree of scratch resistance.

- ④ **Colored paper:** This bisphenol-A contained, 1-side yellow, pink and blue paper.
- ⑤ **Adhesive paper:** This bisphenol-A contained. The printing paper has adhesiveness on one side, which can be directly pasted and used.
- ⑥ **Self-developable/transparent/thermo-sensitive film:** This bisphenol-A contained. Water proof, oil-proof and scratch-resist test; excellent photo-taking effect.

\* If you fail to use the official consumables, causing the printer to malfunction, you will not be entitled to claim the "three in one" policy.

### 9.1 Print Images operation guidelines

Shen:

- 1 Select the "Print Images" function in the Home APP
- 2 Add the photos you need to print
- 3 Set the picture in the work bar area. You can change the picture, modify the picture, adjust the brightness, contrast, or rotate and crop the picture
- 4 Choose the photo printing density by P (printing density): Fine, Medium, Thick, Double-sided
- 5 Select the "Print" button in the lower right corner to complete the photo printing

## 9.2 Graphic operation guidelines

There are a large number of hand-painted original materials in the material library. Various personalized editing can be performed and or this function. This operation steps are as follows:

- ③ Select the "Graphic" function in Phorms APP
- ④ Click on Graph to enter the editing area
- ⑤ In the "Functional Area", you can add text, tables, pictures, videos, and QR code function for personalized editing, and the edited content will be displayed in the "Editing Area".

Features	Instructions
Text	Select the "Text" option on the insert tab into the editing area and you can edit any content; font and alignment are optional.
Table	Select the "Table" option to insert a table into the editing area for editing.
Image	Select the "Image" option to insert a picture into the editing area for editing or printing.
Embed	Select the "Embed" option to insert an embed into the editing area for editing or printing.
QR code	Select the "QR code" option to enter the editing area; you can enter any text, and the entered text will be output in the form of a QR code.

④ After editing the content, click the print icon "🖨" in the upper right corner to complete editing.

\*Tip: You can view the operating tutorial in the APP, and connect the machine according to video tutorial.

### 9.3 Windows application document printing operation guidelines

Select the "Print Web" function in the Phoenix APR and after entering the web address, you can click print button on the page to print the information of the web page.

\*Tip: You can view the operating tutorial in the APP, and connect the machine according to the video tutorial.

## 10. Common problems and solutions

Features	Instructions	Instructions
Half moon on paper loaded	1. The paper roll holder is not installed correctly. 2. The paper roll head cannot fit in and	Reinstall the cylinder for the installation of paper roll adapter.  Press the print head to extend.
Machine can't be charged	1. Can't charge 2. The charger is heated	Connect the machine, check the battery capacity on the Bluetooth connection in the upper right corner. You can check the remaining power of the machine.  Use the 5V/1A charging cable to charge. Under normal circumstances, the machine can be fully charged in 2-3 hours.
Machine indicator flashes fast	3. Unable to activate	Do not leave the battery uncharged for a long period of time (about three months). In this way, cause the battery to run out naturally and fail to activate the charger.
Machine indicator flashes fast	4. The battery is less than 30%	The indicator light will flash quickly.
Machine alarm long prompting the	5. The machine has no power	Charge it for half an hour and then turn it on.

lang:en score:31 filesize: 633.4 K page count: 1 document date: 2024-07-24

Upper and lower covers are stuck when opening	1. The upper and lower covers of the device machine have a running in period	Cover all the times back and forth
	2. The machine is getting heavily dirty	Open the paper compartment of the machine and clean the lower compartment
	3. The machine is getting heavily dirty	Open the paper compartment of the machine and clean the lower compartment
Cannot connect to machine's Bluetooth	1. Mobile phone Bluetooth is not turned on	Turn on the phone's Bluetooth (Bluetooth cannot turn on automatically, you need to turn it on manually)
	2. APP can't find the machine	The machine first turned on. Turn on the machine to a normal state. Double-click the driver power button to print the QR code, scan the code correctly to connect to the printer.
	3. Mobile phone printing permission is not turned on	For Android phones, open the phone's printing permission
The machine doesn't print	1. No words on the paper	The paper roll is loaded upside down, resulting in the printing side of the paper roll (lower roll) rolled inside the paper with white material at the printing side. Roll it up.
	2. System bug	Restart phone
	3. There are black bars	The paper is too big and jammed. Please take out some paper.
	4. Indicator flashes	No electricity. Charge the machine's full on board.
Paper jam when printing	1. The paper roll is loose and jammed	Remove the support of paper roll, manually roll the paper roll and then install the support, or directly put in the paper roll to print.
	2. The machine has foreign objects	Open the paper compartment of the machine and clean the lower compartment
APP shows the printer is out of paper	1. No paper	Reinstall the paper roll. The paper roll is not pulled to the paper outlet, pull the paper roll out by a stick or, preferably, beyond the paper outlet.
	2. The sensor cannot recognize	The printer detects a paper sensor failure, check the sensor with an alcohol swab to clean it.
	3. System bug	Uninstall and reinstall.
Printing is completed, but the paper printed has no content	1. The paper roll is loaded upside down	Take out the paper roll and use your finger to draw out the paper, and install it the right side and roll it up.
Missing printing	1. The paper roll holder is not installed correctly	Reinstall according to the instructions of paper roll holder.
	2. Paper roll separation hole	Take out the paper roll and cut off the unrolled part, reinstall for printing.
	3. The machine has covered in place	The cover of machine has not closed tightly. Replace the cover and press the cover firmly with palm.
	4. Low power	No power. Charge and then print.
	5. Paper roll has been left in air for a long time	Adjust the print density to the highest. Damp paper roll, loading in machine in air for a long time may cause missing printing. Unroll paper roll and pack in sealed bag or box.
Printed font is different from roll font	1. When printing the same content with different mobile phones, the fonts are different	Due to different phone models and versions, the printed fonts will be different. Set the phone's interface as the default font.
Faded font on paper roll	1. Improper use and preservation	There is sensitive paper and cannot be printed with glue. Edit the content before printing, and try to avoid using all-based pen or gel pen on the printed paper after printing. Avoid high temperature, humidity, or alcohol, disinfectant, sweat, or any other liquid, or hand sanitizer will affect the fading of words. Please choose to use thick gloves when the printing paper is in a dry environment. After printing, the printed surface should not be in contact with water or printed surface or transparent bag for storage. If you need to stick the printing paper, please use the official paper with adhesive backing. Some alcohol-based liquid adhesives will affect the fading.

## 11. FCC Warning

### FCC Warning statement:

This device complies with part 15 of the FCC Rules. Operation is subject to the following two conditions: (1) This device may not cause harmful interference, and (2) this device must accept any interference received, including interference that may cause undesired operation.

Any changes or modifications not expressly approved by the party responsible for compliance could void the user's authority to operate the equipment.

This equipment has been tested and found to comply with the limits for a Class B digital device, pursuant to part 15 of the FCC Rules. These limits are designed to provide reasonable protection against harmful interference in a residential installation. This equipment operates on a radio frequency and, if not installed and used in accordance with the instructions, may cause harmful interference to radio communications. However, there is no guarantee that interference will not occur in a particular installation. If this equipment does cause harmful interference to radio or television reception, which can be determined by turning the equipment off and on, the user is encouraged to try to correct the interference by one or more of the following measures:

- Reorient or relocate the receiving antenna.
- Increase the separation between the equipment and receiver.
- Connect the equipment into an outlet on a circuit different from that to which the receiver is connected.
- Consult the dealer or an experienced radio/TV technician for help.

### FCC RF exposure statement:

This device has been evaluated to meet general RF exposure requirements. The device can be used in portable exposure conditions without restriction.

## 12. IC Warning

### IC Warning statement:

This device contains license-exempt transmitter(s)/receiver(s) that comply with Innovation, Science and Economic Development Canada's license-exempt RSS(s). Operation is subject to the following two conditions:

1. This device may not cause interference.
  2. This device must accept any interference, including interference that may cause undesired operation of the device.
- L'émission d'énergie électromagnétique de ce dispositif est conforme aux exigences de la réglementation canadienne relative aux appareils radio exempts de licence. L'exploitation est autorisée aux deux conditions suivantes:
1. L'appareil ne doit pas produire de brouillage.
  2. L'appareil doit accepter tout brouillage radioélectrique subi, même si le brouillage est susceptible d'en compromettre le fonctionnement.

### RF exposure statement

#### IC RF exposure statement:

This device has been evaluated to meet general IC RF exposure requirements. The device can be used in portable exposure conditions without restriction.

#### IC Declaration of Compliance with IC RF:

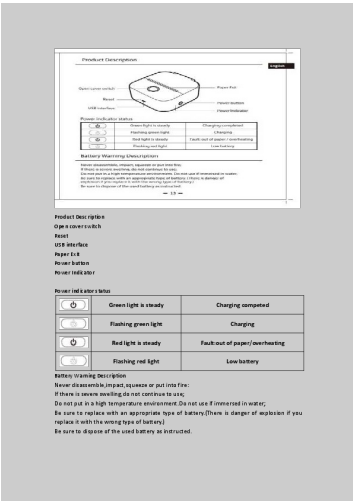
Cet appareil a été évalué pour répondre aux exigences générales d'exposition aux RF d'IC. L'appareil peut être utilisé dans des conditions d'exposition portable sans restriction.



## Phomemo Brand Book 2025: Fun Memo

Explore the Phomemo brand book for 2025, detailing the Phomemo story, products, and media presence. Discover the company's journey, its innovative printing solutions, and its vibrant community.

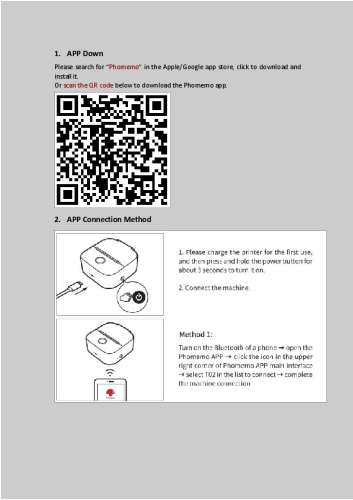
lang:en score:27 filesize: 5.61 M page\_count: 39 document date: 2025-01-22



[Phomemo T02 Mini Printer User Manual and Guide](#)

Comprehensive guide for the Phomemo T02 Mini Printer, covering product description, operation, paper replacement, battery warnings, warranty information, and FCC compliance.

lang:en score:27 filesize: 556 K page\_count: 7 document date: 2020-07-24



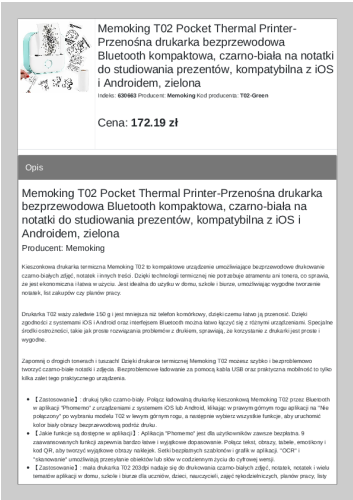
[\[pdf\] Installation Guide Guide](#)

demo User Guide Mini Printer Print Pod Inkless Sticker T02 Pocket with 1 Paper Roll Small Bluetooth

Note for Kid Journal Photo Early Education Office Products 71WZR896LuL m media amazon images I |||

1. APP Down Please search for Phomemo in the Apple/Google app store, click to download and install it. Or scan the QR code below to download the Phomemo app.
2. APP Connection Method 3. How to Replace Sticker Paper ...

lang:en score:27 filesize: 197.6 K page\_count: 2 document date: 2023-10-25

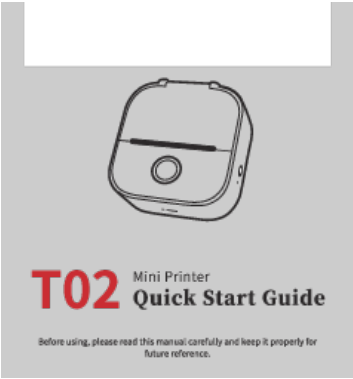


[\[pdf\]](#)

Memoking T02 Pocket Thermal Printer PrzenoÅna drukarka bezprzewodowa Bluetooth kompaktowa czarno biaÅa na notatki do studiowania prezentÅw kompatybilna z iOS i Androidem zielona Sklep internetowy stylem pl memoking t02 pocket thermal printer przenosna bluetooth biala upload files product prezentow ios androidem 630663 |||

Memoking **T02** Pocket Thermal PrinterPrzenona drukarka bezprzewodowa Bluetooth kompaktowa, czarno-biala na notatki do studiowania prezentw, kompatybilna z iOS i Androidem, zielona Indeks: 630663 Producent: Memoking Kod producenta: **T02-Green** Cena: 172.19 zł Opis Memoking **T02** Pocket Thermal Printer-Prze...

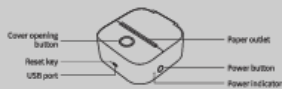
lang:pl score:25 filesize: 94.65 K page\_count: 3 document date: 2025-01-30



## 01. Packing list



## 02. Machine description



Power indicator status description

Power indicator	Light(Green)	Charging completed
	Blinking(Green)	Charging
	Light(Yellow)	Fault: out of paper/overheated
	Blinking(Red)	Low power

## 03. Precautions

- Please use 5V=1A input for charging.
- Please connect the USB cable to the power adapter before charging, please gently insert or crack the charging cable when charging, to prevent excessive force from damaging the port.
- After the charging is completed, please unplugging the charging cable to time.
- In order to avoid danger, do not use or charge in the environment of high temperature, high humidity, heavy smoke and dust, such as in bathroom, steam room, near to open flame, etc.
- Improper charging may cause damage to the print head.
- Do not touch the print head to prevent scalding caused by overheating.
- The heating block is sharp, please be careful to avoid touching it by mistake.
- If the machine is malfunctioning, insert the reset hole to restart the machine.

## Battery warning instructions

- \* It is forbidden to disassemble, hit, squeeze the battery, or throw it into fire.
- \* If severe swelling occurs, please do not reuse it.
- \* Do not place in a high temperature environment, and it is strictly prohibited to use the battery after soaking in water.
- \* There is a danger of explosion if the battery is replaced by the wrong type. Be sure to dispose of the used battery according to the instructions.
- \* If consumers use a power adapter for power supply, they should purchase a power adapter that meets the requirements of corresponding safety standards or a power adapter with CCC certification.

## 04. APP download method

Please search for "Phonemo" in APP store, download and install it.



## 05. App connection method



- Please charge the printer for the first use, and then press and hold the power button for about 3 seconds to turn it on.
- Connect the machine.



Method 1:  
Turn on the Bluetooth of a phone → open the Phonemo APP → click the icon in the upper right corner of Phonemo APP main interface → select T02 in the list to connect → complete the machine connection



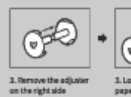
Method 2:  
After starting up, double-click the start-up button printing QR code → scan the code in the Phonemo APP to connect

\*Tips: User can view the usage tutorial in the APP, and connect the machine according to video operation.

## 06. How to replace the printing paper



- Open the top cover and take out printing paper.



- Remove the adjuster on the right side.



- Load the printing paper.



- Install the adjuster on the right side.



- Put the printing paper into the paper compartment of the machine and close the top cover.

\*Tips: How to distinguish the front and back of printing paper

- Take out a printing paper and use your nails to scratch the paper firmly, and then install with the color side up.
- Please make sure that the smooth surface is facing up and aligned with the printing port.

## 07. Warranty description

100% warranty within 1 year

\* Although the product has undergone strict testing and quality inspection, accidents may occur during transportation, resulting in damages to the machine. If there is any problem with the printer, please contact us through the following methods. We have a quick response after-sales team to solve the problem professionally.

\* If the problem is still not solved through our joint efforts, we will replace you with a new machine for free, and you need not to pay any fees. Your satisfaction makes us advance.

## 08. After-sales information

Online Contact Information:

- WhatsApp: +86 13630382384
- Skype: Phonemo Team-Jessie
- support@phonemo.com
- +86 13338158885
- Phonemo Team-Jessie
- www.phonemo.com
- Customer Service phone number: +1 855 897 5533 (US only)
- Service time: Mon-Fri 9AM-5PM (EST) for any questions & suggestions
- 🔍 Please search for "Phonemo" to get the printer operation guide.

## 09. Warranty card

☐ Return ☐ Exchange ☐ Repair



User Info	Name:	Gender:	Phone:
	Address:		
Product Info	Purchase date:		
	Product order number:		
	Product serial number:		
Requirements of return /replacement /repair	Reason description:		
Maintenance records	Failure conditions:		Maintenance persons:
	Handling situations:		Delivery date:
	Maintenance ticket number:		Delivery date:

## 10. Official Thermal Paper Type

- ①**Thermal-free thermo-sensitive paper:** No biophenol A contained. Have a certain degree of scratch resistance.
- ②**Colored paper:** No biophenol A contained. Include yellow, pink and blue paper.
- ③**Adhesive paper:** No biophenol A contained. The printing paper has adhesiveness on one side, which can be directly pasted and used.
- ④**Semi-permeable/transparent thermo-sensitive film:** No biophenol A contained. Water proof, oil proof and scratch resistance, excellent photo-taking effect.
- \* The aforementioned printing paper is an official proprietary consumable.
- \* If you fail to use the official consumables, causing the printer to malfunction, you will not be entitled to enjoy the "three guarantees" policy.

## 11. Specific function operation guidelines

### 11.1 Print images operation guidelines

- Steps:
- ①Select the "Print Images" function in Phomemo APP
- ②Add the photos you need to print
- ③Set the picture in the work bar area. You can change the picture, modify the picture, adjust the brightness, contrast, or rotate and crop the picture.
- ④Choose the photo printing density. Printing density: Fine, Medium, Thick, Dedicated
- ⑤Select the "Print" button in the lower right corner to complete picture printing

### 11.2 Graphic operation guidelines

- There are a large number of hand-painted original materials in the material library. Various personalized editing can be performed under this function. The operation steps are as follows.
- ①Select the "Graphic" function in Phomemo APP
- ②Click any Graphic to enter the editing area
- ③In the "Functional Area", you can add text, tables, pictures, stickers, and QR code functions for personalized editing, and the edited content will be displayed in the "Editing Area".

Features	Instructions
Text	Select the "Text" option to insert text box into the body for editing, and you can edit any content, font and alignment are optional.
Table	Select the "Table" option to insert a table into the editing area for editing.
Image	Select the "Image" option to insert a picture into the editing area for editing or printing.
Emoji	Select the "Emoji" option to insert an emoji into the editing area for editing or printing.
QR code	Select the "QR code" option to enter the editing area, you can enter any text, and the entered text will be output in the form of a QR code.

- ④After editing the content, click the print icon "Print" in the upper right corner to complete printing.
- \*Tip: You can view the operating tutorial in the APP, and connect the machine according to video tutorial.

### 11.3 Windows application document printing operation guidelines

- Select the "Print Word" function in the Phomemo APP, and after entering the web address, you can click print button on the page to print the information of the web page.
- \*Tip: You can view the operating tutorial in the APP, and connect the machine according to the video tutorial.

## 12. Common problems and solutions

Features	Instructions	Instructions
Half margin of page printed	1. The paper roll holder is not installed correctly. 2. The machine print head cannot rebound.	Reinstall according to the instructions of paper roll adapter. Press the print head to rebound.
Machine can't be charged	1. Can't charge 2. The charger is heated 3. Unable to activate	Connect the machine, check the battery capacity at the Bluetooth connection in the upper right corner. You can check the remaining power of the machine. Use the 5v/1A charging cable to charge under normal circumstances, the machine can be fully charged in 3-5 hours. Do not leave the battery uncharged for a long period of time (about three months), as this may cause the battery to run out naturally and fail to activate charging.
Machine indicator flashes but no response after long-pressing the power button	1. The battery is less than 30% 2. The machine has no power	The indicator light will flash quickly. Charge it for half an hour and then turn it on.
Upper and lower covers are stuck when opening	1. The upper and lower covers of the new machine have a running-in period	Cover a few times back and forth
Cannot connect to machine's Bluetooth	1. The machine is gotten foreign objects 2. Mobile phone Bluetooth is not turned on 3. APP can't find the machine	Open the paper compartment of the machine and clean the inner compartment. Turn on the phone's Bluetooth (Bluetooth cannot turn on automatically, you need to turn it on manually). The machine is not turned on. Turn on the machine to a normal state.
	4. Mobile phone positioning permission is not turned on	Double-click the printer power button to print the QR code, scan the code directly to connect to the printer.
		For Android phones, open the phone positioning permission.
The machine doesn't print	1. No words on the paper 2. System bug 3. There are black bars	The paper roll is loaded upside down, resulting in the printing side of the paper roll (inner roll) rolled inside; all paper rolls shall be installed with the printing side facing up. Restart phone. The paper is too big and jammed. Please take out some paper.
	4. Indicator flashes	No electricity. Charge the machine (half an hour). Reinstall the paper roll; the paper roll is not pulled to the paper outlet; pull the paper roll out by a section, preferably beyond the paper outlet.
Paper jam when printing	1. The paper roll is loose and jammed 2. The machine has foreign objects	Remove the support of paper roll, manually wind the paper roll and then install the support, or directly put in the paper roll to print. Open the paper compartment of the machine and clean the inner compartment.
APP shows the printer is out of paper	1. No paper 2. The sensor cannot recognize 3. System bug	Reinstall the paper roll; the paper roll is not pulled to the paper outlet; pull the paper roll out by a section, preferably beyond the paper outlet. The printer detects a paper sensor failure; clean the sensor with an alcohol-soaked cotton swab. Uninstall and reinstall.
Printing succeeded, but the paper printed has no content	1. The paper roll is loaded upside down	Take out the paper roll and use your fingernail to draw hair on the paper, and install with the color side facing up.
Missing printing	1. The paper roll holder is not installed correctly 2. Paper roll expansion hole 3. The machine box cover is not in place 4. Low power 5. Paper roll has been left in air for a long time	Reinstall according to the instructions of paper roll adapter. Take out the paper roll and cut off the wrinkled part, reinstall for printing. The cover of machine box is not closed tightly. Replace the cover and press the cover firmly with palm. No power. Charge and then print. Adjust the print density to the highest. Damp paper roll, leaving in machine or in air for a long time may cause missing printing. Unused paper rolls are packed in sealed bags or boxes.

## [pdf] User Manual Quick Start Guide Guide

T02 Phomemo 1 20230914 TO2 Quick Start Guide Before using please read this manual carefully and keep it properly for future reference 01 Packing list English Printer\*1 printing C1UXL0jO7dLm media amazon images I C1UXL0jO7dL |||

...

lang:pl score:23 filesize: 4.28 M page\_count: 1 document date: 2023-09-15

Printed font is different from soft font	1. When printing the same content with different mobile phones, the fonts are different	Due to different phone models and versions, the printed fonts will be different; set the phone system font as the default font.  Thermo-sensitive paper cannot be pasted with glue.  Edit the records before printing, and try to avoid using oil-based pens or gel pens on the printing paper after printing.  Ambient temperature, humidity, or alcohol, disinfectant, sweat on your hands, or hand sanitizer will affect the fading of words.  Please choose to avoid light and store the printing paper in a dry environment.  After printing, the printed surface should not be in contact with another printed surface or transparent bag for storage.  If you need to stick the printing paper, please select the official paper with adhesive backing. Some alkaline liquid adhesives will accelerate the fading.
Faded font on paper roll	improper use and preservation	

### 13. FCC Warning

FCC Warning statement:

This device complies with part 15 of the FCC Rules. Operation is subject to the following two conditions: (1) This device may not cause harmful interference, and (2) this device must accept any interference received, including interference that may cause undesired operation.

Any Changes or modifications not expressly approved by the party responsible for compliance could void the user's authority to operate the equipment.

This equipment has been tested and found to comply with the limits for a Class B digital device, pursuant to part 15 of the FCC Rules. These limits are designed to provide reasonable protection against harmful interference in a residential installation. This equipment generates uses and can radiate radio frequency energy and, if not installed and used in accordance with the instructions, may cause harmful interference to radio communications. However, there is no guarantee that interference will not occur in a particular installation. If this equipment does cause harmful interference to radio or television reception, which can be determined by turning the equipment off and on, the user is encouraged to try to correct the interference by one or more of the following measures:

- Reorient or relocate the receiving antenna.
- Increase the separation between the equipment and receiver.
- Connect the equipment into an outlet on a circuit different from that to which the receiver is connected.
- Consult the dealer or an experienced radio/TV technician for help.

FCC RF exposure statement:

The device has been evaluated to meet general RF exposure requirement. The device can be used in portable exposure condition without restriction.

### 14. IC Warning

IC Warning statement:

This device contains licence-exempt transmitter(s)/receiver(s) that comply with Innovation, Science and Economic Development Canada's licence-exempt RSS(s). Operation is subject to the following two conditions:

- 1.)This device may not cause interference.
- 2.)This device must accept any interference, including interference that may cause undesired operation of the device.

L'appareil est un émetteur-récepteur exempt de licence contenu dans le présent appareil est conforme aux CNR d'Innovation, Sciences et Développement économique Canada applicables aux appareils radio exempts de licence. L'exploitation est autorisée aux deux conditions suivantes:

- 1.)L'appareil ne doit pas produire de brouillage;
- 2.)L'appareil doit accepter tout brouillage radioélectrique subi, même si le brouillage est susceptible d'en compromettre le fonctionnement.

RF exposure statement

IC RF exposure statement:

The device has been evaluated to meet general IC RF exposure requirement. The device can be used in portable exposure condition without restriction.

IC Déclaration d'exposition aux RF:

L'appareil a été évalué pour répondre aux exigences générales d'exposition aux RF d'IC. L'appareil peut être utilisé dans des conditions d'exposition portable sans restriction.

LommePrinter

når du vil hvor du vil

Insta Printer brugervejledning

[pdf]

Dansk brugervejledning Insta Printer LommePrinter v 1746349401 cdn shopify s files 1 0906 3206 1305

|||

Insta Printer brugervejledning 1. Produkt introduk-on 1.1 Pakkeliste 1.2 Instruk1on 11 printerdele ... nd for Bluetooth p din telefon, bn Phomemo app en, og klik p ikonet i verste hjre hjrne for at vlge **T02** for at opreTe forbindelse. Metode 2: Dobbeltklik p On/Off knappen for at udskrive en QR-kode, og...

lang:da **score:18** filesize: 958.45 K page\_count: 7 document date: 2025-05-04

### Phomemo Printer Troubleshooting Guide

A comprehensive guide to troubleshooting common issues with Phomemo portable printers, including Bluetooth connectivity, printing problems, and driver installation.

lang:en **score:16** filesize: 1.28 M page\_count: 23 document date: 2025-02-18



# T02 Mini Printer

## Quick Start Guide

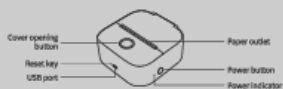
Before using, please read this manual carefully and keep it properly for future reference.

### English

#### 01. Packing list



#### 02. Machine description



##### Power indicator status description

Power indicator	USB(Green)	Charging completed
	Blinking(Green)	Charging
	USB(Yellow)	Fault: out of paper/overheated
	Blinking(Red)	Low power

#### 03. Precautions

- Please use 5V=1A input for charging.
- Please connect the USB cable to the power adapter before charging, please gently insert or unplug the charging cable when charging, to prevent excessive force from damaging the port.
- After the charging is completed, please unplug the charging cable in time.
- In order to avoid damage, do not use or charge in the environment of high temperature, high humidity, heavy smoke and dust, such as in bathroom, steam room, near to open flame, etc.
- Improper charging may cause damage to the print head.
- Do not touch the print head to prevent scalding caused by overheating.
- The heating blade is sharp, please be careful to avoid touching it by mistake.
- If the machine is malfunctioning, insert the reset hole to restart the machine.

##### Battery warning instructions

- \* It is forbidden to disassemble, fix, separate the battery, or throw it into fire.
- \* If severe swelling occurs, please do not reuse it.
- \* Do not place in a high temperature environment, and it is strictly prohibited to use the battery after soaking in water.
- \* There is a danger of explosion if the battery is replaced by the wrong type. Be sure to dispose of the used battery according to the instructions.
- \* If consumers use a power adapter for power supply, they should purchase a power adapter that meets the requirements of corresponding safety standards or a power adapter with CCC certification.

#### 04. APP download method

Please search for "Phomemo" in APP store, download and install it.

Search for Phomemo in the Apple App Store, click to download and install



Search for Phomemo in the Google App Store, click to download and install



#### 05. App connection method



- Please charge the printer for the first use, and then press and hold the power button for about 3 seconds to turn it on.
- Connect the machine.



Method 1:  
Turn on the Bluetooth of a phone -> open the Phomemo APP -> click the icon in the upper right corner of Phomemo APP main interface -> select T02 in the list to connect -> complete the machine connection



Method 2:  
After starting up, double-click the start-up button printing QR code -> scan the code in the Phomemo APP to connect

\*Tips: User can view the usage tutorial in the APP, and connect the machine according to video operation.

#### 06. How to replace the printing paper



- Open the top cover and take out printing paper



- Remove the adjuster on the right side



- Load the printing paper



- Install the adjuster on the right side



- Put the printing paper into the paper compartment of the machine and close the top cover.

##### \*Tips: How to distinguish the front and back of printing paper

- Take out a printing paper and use your nails to scratch the paper firmly, and then install with the color side up.
- Please make sure that the smooth surface is facing up and aligned with the printing port.

#### 07. Warranty description




100% warranty within 1 year

\* Although the product has undergone strict testing and quality inspection, accidents may occur during transportation, resulting in damages to the machine. If there is any problem with the printer, please contact us through the following methods. We have a quick response after-sales team to solve the problem professionally.

\* If the problem is still not solved through our joint efforts, we will replace you with a new machine for free, and you need not to pay any fees. Your satisfaction makes us advance.

## 08. After-sales information

Online Contact Information:

-  WhatsApp  
+86 15338153834  
+86 15338153885
-  Skype  
Phomemo Team-Jessie  
Phomemo Team-Irislin
-  Email  
support@phomemo.com  
www.phomemo.com

## 09. Warranty card

☐ Return ☐ Exchange ☐ Repair

User Info	Name:	Gender:	Phone:
	Address:		
Product Info	Purchase date:		
	Product order number:		
	Product Serial Number:		
Requirements of return /replacement /repair	Reason description:		
Maintenance records	Failure condition:	Maintenance person:	
	Handling situation:	Delivery date:	
	Maintenance ticket number:	Delivery date:	

## 10. Official Thermal Paper Type

**(7)Foil-proof thermo-sensitive paper:** No biophenol A contained. Have a certain degree of scratch resistance.

**(8)Colored paper:** No biophenol A contained. Include yellow, pink and blue paper.

**(9)Adhesive paper:** No biophenol A contained. The printing paper has adhesiveness on one side, which can be directly pasted and used.

**(10)Direct-thermal/transparent thermo-sensitive flexo:** biophenol A contained. water proof, oil proof and scratch resistant; excellent photo-taking effect.

\* The aforementioned printing paper is an official proprietary consumable.

\* If you fail to use the official consumables, causing the printer to malfunction, you will not be entitled to enjoy the "three guarantees" policy.

## 11. Specific function operation guidelines

### 11.1 Print images operation guidelines

Steps:

- (1)Select the "Print Images" function in Phomemo APP
- (2)Add the photos you need to print
- (3)Set the picture in the work bar area. You can change the picture, modify the picture, adjust the brightness, contrast, or rotate and crop the picture.
- (4)Choose the photo printing density. Printing density: Fine, Medium, Thick, Dedicated
- (5)Select the "Print" button in the lower right corner to complete picture printing

### 11.2 Graphic operation guidelines

There are a large number of hand-printed original materials in the material library. Various personalized editing can be performed under this function. The operation steps are as follows.

(1)Select the "Graphic" function in Phomemo APP

(2)Click any Graphic to enter the editing area

(3)In the "Functional Area", you can add text, tables, pictures, stickers, and QR code functions for personalized editing, and the edited content will be displayed in the "Editing Area".

Features	Instructions
Text	Select the "Text" option to insert text box into the body for editing, and you can edit any content, font and alignment are optional.
Table	Select the "Table" option to insert a table into the editing area for editing.
Image	Select the "Image" option to insert a picture into the editing area for editing or printing.
Emoji	Select the "Emoji" option to insert an emoji into the editing area for editing or printing.
QR code	Select the "QR code" option to enter the editing area, you can enter any text, and the entered text will be output in the form of a QR code.

(4)After editing the content, click the pink icon "O" in the upper right corner to complete printing.

\*Tip: You can view the operating tutorial in the APP, and connect the machine according to video tutorial.

### 11.3 Windows application document printing operation guidelines

Select the "Print Web" function in the Phomemo APP, and after entering the web address, you can click print button on the page to print the information of the web page.

\*Tip: You can view the operating tutorial in the APP, and connect the machine according to the video tutorial.

## 12. Common problems and solutions

Features	Instructions	Instructions
Half margin or page printed	1. The paper roll holder is not installed correctly	Reinstall according to the instructions of paper roll adapter.
	2. The machine print head cannot rebound	Press the print head to rebound
Machine can't be charged	1. Can't charge	Connect the machine, check the battery capacity at the Bluetooth connection in the upper right corner. You can check the remaining power of the machine
	2. The charger is heated	Use the 5V1A charging cable to charge. Under normal circumstances, the machine can be fully charged in 3-6 hours.
	3. Unable to activate	Do not leave the battery uncharged for a long period of time (about three months), as this may cause the battery to run out naturally and fail to activate charging.
Machine indicator flashes fast	1. The battery is less than 30%	The indicator light will flash quickly
No response after long pressing the power button	1. The machine has no power	Charge it for half an hour and then turn it on
Upper and lower covers are stuck when opening	1. The upper and lower covers of the new machine have a sticking in period	Cover a few times back and forth
	2. The machine is getting foreign objects	Open the paper compartment of the machine and clean the inner compartment
Cannot connect to machine's Bluetooth	1. Mobile phone Bluetooth is not turned on	Turn on the phone's Bluetooth (Bluetooth cannot turn on automatically, you need to turn it on manually)
	2. APP can't find the machine	The machine is not turned on. Turn on the machine to a normal state
	3. Mobile phone positioning permission is not turned on	Double-click the printer power button to print the QR code, scan the code directly to connect to the printer
		For Android phones, open the phone positioning permission
The machine doesn't print	1. No words on the paper	The paper roll is loaded upside down, resulting in the printing side of the paper roll (inner roll) rolled inside; all paper rolls shall be installed with the printing side facing up
	2. System bug	Restart phone
	3. There are black bars	The paper is too big and jammed. Please take out some paper.
	4. Indicator flashes	No electricity. Charge the machine (half an hour)
		Reinstall the paper roll; the paper roll is not pulled to the paper outlet; pull the paper roll out by a section, preferably beyond the paper outlet.
Paper jam when printing	1. The paper roll is loose and jammed	Remove the support of paper roll, manually wind the paper roll and then install the support, or directly paste the paper roll to print.
	2. The machine has foreign objects	Open the paper compartment of the machine and clean the inner compartment
APP shows the printer is out of paper	1. No paper	Reinstall the paper roll; the paper roll is not pulled to the paper outlet; pull the paper roll out by a section, preferably beyond the paper outlet.
	2. The sensor cannot recognize	The printer detects a paper sensor failure; clean the sensor with an alcohol-sticky

[pdf]

T02 Phomemo 1 20230914 Connect the machine Method 1 Turn on Bluetooth of a phone →

open Phomemo APP→ click icon in C1UXL0jO7dL ref dp product quick view m media amazon images I

|||

...

lang:en score:11 filesize: 4.28 M page\_count: 1 document date: 2023-09-15



		common issues
	3. System bug	restart and reinstall
Printing succeeded, but the paper printed has no content	1. The paper roll is loaded upside down	Take out the paper roll and use your fingernail to draw it out on the paper, and install with the color side facing up.
Missing printing	1. The paper roll holder is not installed correctly	Reinstall according to the instructions of paper roll adaptor.
	2. Paper roll expansion hole	Take out the paper roll and cut off the wrinkled part, reinstall for printing.
	3. The machine box cover is not in place	The cover of machine box is not closed tightly. Replace the cover and press the cover firmly with palm.
	4. Low power	No power. Charge and then print. Adjust the print density to the highest.
	5. Paper roll has been left in air for a long time	Damp paper roll, leaving in machine or in air for a long time may cause missing printings. Unwound paper rolls are packed in sealed bags or boxes.
Printed fonts is different from cell's font	1. When printing the same content with different mobile phones, the fonts are different	Due to different phone models and versions, the printed fonts will be different; set the phone system font as the default font.
Padded font on paper roll	Improper use and preservation	Thermo-sensitive paper cannot be pasted with glue. Edit the records before printing, and try to avoid using oil-based pens or gel pen on the printing paper after printing. Ambient temperature, humidity, or alcohol, disinfectant, sweat on your hands, or hand sanitizer will affect the fading of words. Please choose to avoid light and store the printing paper in a dry environment. After printing, the printed surface should not be in contact with another printed surface or transparent bag for storage. If you need to stick the printing paper, please select the official paper with adhesive backing. Some alkaline liquid adhesives will accelerate the fading.

13. FCC Warning

FCC Warning statement:

This device complies with part 15 of the FCC Rules. Operation is subject to the following two conditions: (1) This device may not cause harmful interference, and (2) this device must accept any interference received, including interference that may cause undesired operation.

Any Changes or modifications not expressly approved by the party responsible for compliance could void the user's authority to operate the equipment.

This equipment has been tested and found to comply with the limits for a Class B digital device, pursuant to part 15 of the FCC Rules. These limits are designed to provide reasonable protection against harmful interference in a residential installation. This equipment generates uses and can radiate radio frequency energy and, if not installed and used in accordance with the instructions, may cause harmful interference to radio communications. However, there is no guarantee that interference will not occur in a particular installation. If this equipment does cause harmful interference to radio or television reception, which can be determined by turning the equipment off and on, the user is encouraged to try to correct the interference by one or more of the following measures:

- Reorient or relocate the receiving antenna.
- Increase the separation between the equipment and receiver.
- Connect the equipment into an outlet on a circuit different from that to which the trouble is connected.
- Consult the dealer or an experienced radio/TV technician for help.

FCC RF exposure statement:

The device has been evaluated to meet general RF exposure requirement. The device can be used in portable exposure condition without restriction.

14. IC Warning

IC Warning statement:

This device contains licence-exempt transmitter(s)/receiver(s) that comply with Innovation, Science and Economic Development Canada's licence-exempt RSS(s). Operation is subject to the following two conditions:

- 1.This device may not cause interference.
  - 2.This device must accept any interference, including interference that may cause undesired operation of the device.
- L'équipement/le récepteur exempt de licence contenu dans le présent appareil est conforme aux CNR d'Innovation, Sciences et Développement Économique Canada applicables aux appareils radio exempts de licence. L'exploitation est autorisée aux deux conditions suivantes:
- 1.L'appareil ne doit pas produire de brouillage.
  - 2.L'appareil doit accepter tout brouillage radioélectrique subi, même si le brouillage est susceptible d'en compromettre le fonctionnement.

RF exposure statement:

IC RF exposure statement:

The device has been evaluated to meet general IC RF exposure requirement. The device can be used in portable exposure condition without restriction.

IC Déclaration d'exposition aux RF:

L'appareil a été évalué pour répondre aux exigences générales d'exposition aux RF d'IC. L'appareil peut être utilisé dans des conditions d'exposition portable sans restriction.