

Conrain M4 64GB Grey

Conrain MP3 Player User Manual

Model: M4 64GB Grey

1. INTRODUCTION

Thank you for purchasing the Conrain MP3 Player. This portable device is designed to provide a high-fidelity audio experience with versatile multimedia functions. Featuring Bluetooth 5.3 connectivity, a built-in speaker, and a 2.4-inch full touchscreen, it offers convenience and quality for your music and media needs.

This manual provides detailed instructions on how to set up, operate, and maintain your MP3 player. Please read it thoroughly before use to ensure optimal performance and longevity of your device.



Image: The Conrain MP3 Player, a compact black device with a touchscreen display, shown alongside a pair of black wired earphones. The screen displays various app icons for music, video, radio, Bluetooth, e-book, settings, record, folder, and photo.

2. PRODUCT OVERVIEW

Familiarize yourself with the components and controls of your Conrain MP3 Player.



Image: A diagram illustrating the Conrain MP3 Player from multiple angles (front, side, top, bottom) with labels for its various ports and buttons, including Volume+, Volume-, ON/OFF, USB Charging port, Reset hole, Headphone port, and TF Card slot. The screen size is indicated as 2.4 inches.

Package Contents:

- Conrain MP3 Player (M4 64GB Grey)
- Type-C Charging Cable
- Wired Earphones
- User Manual (this document)

Device Layout:

- **Front:** 2.4-inch Full Touchscreen Display
- **Right Side:** Volume Up (+), Volume Down (-), Power/Lock Button
- **Left Side:** TF Card Slot (supports up to 128GB)
- **Bottom:** USB Type-C Charging Port, 3.5mm Headphone Jack, Reset Hole
- **Top:** Built-in HD Speaker

3. INITIAL SETUP

3.1 Charging the Device

Before first use, fully charge your MP3 player. Connect the provided Type-C charging cable to the device's USB port and the other end to a USB power adapter (not included) or a computer's USB port. The battery icon on the screen will indicate charging status. A full charge typically takes 2-3 hours.



Image: A close-up view of the MP3 player's bottom edge, highlighting the USB Type-C charging port, indicating where the charging cable should be connected.

3.2 Powering On/Off

- **To Power On:** Press and hold the Power/Lock button on the right side of the device until the screen lights up.
- **To Power Off:** Press and hold the Power/Lock button until a power-off prompt appears on the screen, then confirm.
- **To Lock/Unlock Screen:** Briefly press the Power/Lock button.

3.3 Transferring Files (Music, Videos, Photos, E-books)

Connect the MP3 player to your computer using the provided Type-C USB cable. The device will appear as a removable disk drive. You can then drag and drop your desired files into the respective folders (e.g., "Music," "Video," "Pictures," "Ebook") on the player.



Image: The Conrain MP3 Player displaying its main menu, with an overlay indicating "Built-in 64GB Memory" and support for up to a 128GB TF card.

Small icons representing music, e-books, and other media types are shown flowing into the device, symbolizing file transfer.

The player has 64GB of built-in memory and supports expansion up to 128GB via a TF (microSD) card (not included). Insert the TF card into the slot on the left side of the device.

4. OPERATING INSTRUCTIONS

The Conrain MP3 Player features a full touchscreen interface for easy navigation. Tap icons to open applications and swipe to navigate menus.



Image: The Conrain MP3 Player held in a hand, displaying its multi-function icons on the touchscreen, including Music, Movie, Radio, Bluetooth, E-book, Settings, Record, Folder, and Photo. An overlay highlights the "Multi-function" capability.

4.1 Music Playback

Tap the "Music" icon to access your audio library. You can browse by artist, album, genre, or all songs. The player supports HiFi lossless sound quality for an enhanced listening experience.

- **Play/Pause:** Tap the play/pause icon on the screen.
- **Next/Previous Track:** Tap the forward/backward arrows.
- **Volume Control:** Use the physical Volume +/- buttons on the right side of the device or adjust on-screen if available.
- **Equalizer:** Access equalizer settings through the music playback menu to customize sound profiles.



Image: A hand holding the Conrain MP3 Player, which displays a music playback screen with album art and controls. An overlay emphasizes "HiFi Lossless Music" and shows a sound wave graphic, indicating high-quality audio output.

4.2 Bluetooth Connectivity

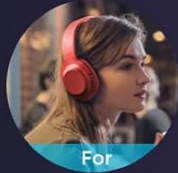
The player features Bluetooth 5.3 for stable and efficient wireless connection to headphones or speakers. Note: Bluetooth is for transmitting audio only; it cannot receive signals from other devices.

- Tap the "Bluetooth" icon on the main menu.
- Turn on Bluetooth and scan for available devices.
- Select your Bluetooth headphones or speaker from the list to pair.
- Once paired, audio will be routed wirelessly.

Universal Compatibility

The latest upgrade Bluetooth 5.3

- More stable
- Faster connection
- Lower power consumption
- Longer transmission distance



For
Bluetooth Headphone



For
Bluetooth earbuds



For
Bluetooth Speaker



Image: The Conrain MP3 Player with a Bluetooth icon prominently displayed, surrounded by images of Bluetooth headphones, earbuds, and a speaker, illustrating its universal compatibility with Bluetooth 5.3 for stable and faster connections.

4.3 FM Radio

To use the FM radio function, you must plug in wired earphones (included) as they act as the antenna. Tap the "Radio" icon to open the FM radio interface.

- **Auto-scan:** The player can automatically scan and save available radio stations.
- **Manual Tuning:** Manually adjust the frequency to find specific stations.
- **Recording:** Some models may support recording FM broadcasts.



Image: A square icon representing the FM Radio function, featuring a radio antenna symbol.

4.4 Voice Recorder

Tap the "Record" icon to access the voice recorder. You can record lectures, meetings, or personal notes. Recordings are saved in a designated folder on the device.



Image: A square icon representing the Voice Recorder function, featuring a microphone symbol.

4.5 E-Book Reader

The player supports e-book functionality. Transfer compatible e-book files (e.g., TXT format) to the "Ebook" folder. Tap the "Ebook" icon to open your library and read.

4.6 Video Playback & Photo Viewer

View videos and photos directly on the 2.4-inch touchscreen. Transfer compatible video and image files to the "Video" and "Photo" folders respectively. Tap the corresponding icons to browse and play/view your media.

Your browser does not support the video tag.

Video: An official product video showcasing the Conrain M4S 64GB MP3 Player with Bluetooth 5.3. The video highlights various features including its compact design, touchscreen interface, built-in memory, Bluetooth connectivity, and multimedia capabilities like music, video, and e-book playback.

4.7 Other Functions

The device also includes a built-in alarm clock, stopwatch, and calendar functions, accessible via the main menu or settings.

5. MAINTENANCE

- **Cleaning:** Use a soft, dry cloth to clean the device. Do not use liquid cleaners or aerosols.
- **Storage:** Store the player in a cool, dry place away from direct sunlight and extreme temperatures.
- **Battery Care:** To prolong battery life, avoid fully discharging the battery frequently. Charge the device regularly, even if not in use for extended periods.
- **Avoid Drops:** The device has a durable metal casing, but avoid dropping it to prevent internal damage or screen cracks.

6. TROUBLESHOOTING

Problem	Solution
---------	----------

Problem	Solution
Device does not power on.	Ensure the battery is charged. Connect to a charger for at least 10 minutes. If unresponsive, try pressing and holding the power button for 10-15 seconds. If still unresponsive, locate the reset hole (small pinhole) and gently press it with a paperclip.
Cannot connect to computer.	Ensure the USB cable is securely connected. Try a different USB port or cable. Restart your computer and the MP3 player.
Bluetooth pairing fails.	Ensure the target Bluetooth device is in pairing mode and within range. Turn off and on Bluetooth on both devices. Clear previous pairings on both devices if necessary. Remember, the MP3 player transmits audio, it does not receive.
FM Radio not working.	Ensure wired earphones are plugged into the 3.5mm jack, as they serve as the antenna. Try repositioning the earphone cable for better reception.
Screen is unresponsive or frozen.	Press and hold the power button for 10-15 seconds to force a restart. If that doesn't work, use a paperclip to press the reset hole.
Poor sound quality from built-in speaker.	The built-in speaker is for convenience. For optimal sound quality, use wired earphones or connect to a Bluetooth speaker.

7. SPECIFICATIONS

Feature	Detail
Model Number	M4 64GB Grey
Brand	Conrain
Dimensions (L x W x H)	2.81 x 2.03 x 0.38 inches
Weight	7 ounces
Screen Size	2.4 Inches
Internal Memory	64 GB
Expandable Memory	Supports up to 128GB TF Card (Micro SD)
Bluetooth Version	5.3
Connectivity	Bluetooth, Aux (3.5mm), USB Type-C
Audio Formats	Supports HiFi Lossless Sound (specific formats not detailed in input, so keep general)
Battery Type	Lithium Polymer (included)
Special Features	Built-In Speaker, Voice Recorder, Touch Screen, Equalizer, FM Radio, E-book, Picture, Video, Alarm Clock, Stopwatch, Calendar

8. WARRANTY AND SUPPORT

For warranty information and technical support, please refer to the contact details provided on the product packaging or visit the official Conrain website. If you encounter any issues not covered in this manual, please contact customer service for assistance. You can also visit the Conrain Store on Amazon for more product information and support: [Conrain Store](#)