

[manuals.plus](#) /

- › [STRICH](#) /
- › [STRICH Stereo Looper Pedal Guitar Pedal with Built-in Drum Machine, 100 Diverse Drum Patterns, 160 Minutes Recording Time, USB for Audio Upload or Download, Support Footswitch Control](#)

## STRICH LOOPER&DRUM

# STRICH Stereo Looper Pedal with Built-in Drum Machine

Model: LOOPER&DRUM

Brand: STRICH

## 1. INTRODUCTION

The STRICH Stereo Looper Pedal is a versatile 2-in-1 device combining a powerful looper with a comprehensive drum machine. Designed for guitarists and musicians, it offers extensive recording capabilities and a wide array of rhythmic patterns to enhance practice, composition, and live performance. This manual provides essential information for setting up, operating, maintaining, and troubleshooting your pedal.



Front view of the STRICH Stereo Looper Pedal, showcasing its controls and display.

## 2. KEY FEATURES

- 
- **2-in-1 Design:** Integrates a looper and drum machine for combined creative and rhythmic practice needs.
  - **Powerful Looper:** Stores 40 presets, each with a maximum recording time of 4 minutes, totaling 160 minutes. Features a 24-bit/44.1kHz DSP chip for accurate sound reproduction.
  - **Versatile Drum Machine:** Offers 10 different drum styles, each with 10 unique rhythmic patterns, providing 100 diverse drum patterns (pop, rock, metal, Latin, blues, jazz, fusion, hip-hop, funk, disco).
  - **Dual Inputs/Outputs:** Two mono 1/4" inputs for simultaneous instrument and microphone connection, and two mono 1/4" outputs for stereo output.
  - **USB Connectivity:** Supports audio upload and download, and software editing for loop management.
  - **Footswitch Control:** Allows for hands-free operation during performance.

# 2 in 1

## LOOPER+DRUM MACHINE

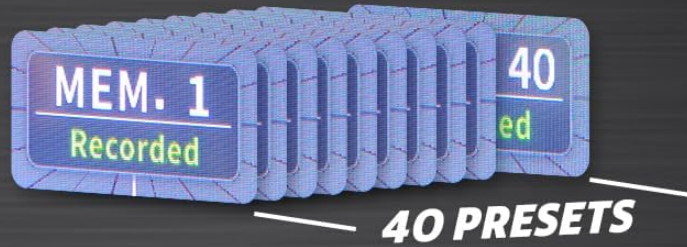
Meet music creation and practice needs at the same time



*The pedal's 2-in-1 design combines looper and drum machine functionalities.*

# 160 MINS HUGE LOOP CAPACITY

Creative inspiration is no longer limited



**REC**  
240.0'S



*The looper offers a substantial 160 minutes of total recording time across 40 presets.*

# 100 DRUM GROOVES

Suitable for different music styles to practice



**POP**

4 4/4



**ROCK**

10 4/4



**METAL**

8 4/4



**FUSION**

10 11/8



**FUNK**

8 4/4



**DISCO**

10 4/4



**BLUES**

10 4/4



**JAZZ**

10 4/4



**LATIN**

10 4/4



**HIPHOP**

10 4/4



Explore 100 diverse drum patterns across various musical genres.

## 3. SETUP GUIDE

### 3.1 Power Supply

The STRICH Stereo Looper Pedal requires a **9V DC, minimum 300mA, center-negative adapter**. The power supply is **not included** with the pedal. Using an incorrect adapter may damage the device. There is no battery compartment.

# STRICH Looper&Drum Effect Pedal

## CORRECT POWER SOURCE

Use **9V DC** power supply with **at least 300mA** center-negative adapter to avoid performance issues or noise problems.



## POWER SUPPLY NOT INCLUDED

The product does **not come with** a power adapter, and users must purchase a compatible effector power adapter separately as per the requirements.

## PROPER SIGNAL CONNECTION

The product features two mono R/L channels. Correct matching of input to output (**R to R**, **L to L**) is necessary for normal signal transmission.



*Ensure correct power supply (9V DC, 300mA, center-negative) and proper signal connections.*

## 3.2 Connections

The pedal features dual inputs and outputs for versatile connectivity:

- **Input R (Mono):** Connect your instrument (e.g., guitar) here for mono input.
- **Input L (Mono):** Connect a second instrument or microphone here. Connect both L and R inputs for stereo input.
- **Output L (Mono):** Connect to your amplifier or audio interface. Connect both L and R outputs for stereo output.
- **Output R:** Connect to your amplifier or audio interface.
- **EXT CTRL:** For connecting an external footswitch (purchased separately).
- **USB (Type-C):** Connect to a computer for editor software, import/export files, or factory reset.

# 2 INPUT/2 OUTPUT

Support microphone and instrument loop at the same time

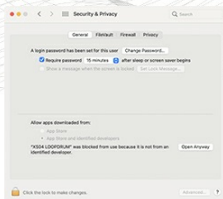


*The pedal supports dual input and output for stereo or multi-instrument setups.*

## STRICH Looper&Drum Machine Mac Software Manual



1. Open below

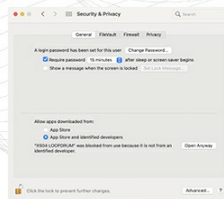


5. Unlock to change

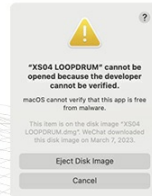


XS04 LOOPDRUM

2. Open below



6. Unlock successfully then click "Open Anyway"



3. It shows below



7. Click "Open"



4. Open system preferences, press "Security & Privacy"

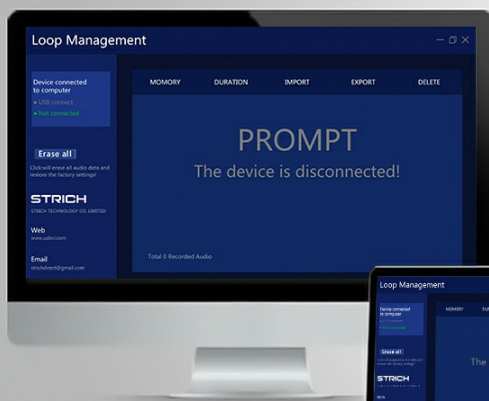


8. It will be opened successfully then power on the looper and use type C cable to connect looper with mac. It will show "connected" then you can upload or download your phases.

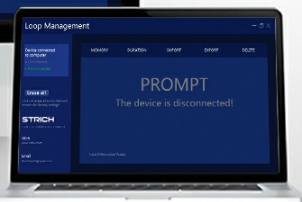
*Example connection setup for the looper pedal with instruments and output devices.*

## 4. OPERATING INSTRUCTIONS

### 4.1 Controls Overview



Mac



Windows

**The editing software supports both Windows & Mac systems**

*Detailed view of the pedal's controls and their functions.*

- **LOOPER Control:** Adjusts loop position, volume, and fade out time.
- **LOOPER LED:** Indicates current looper parameters.
- **Display Screen:** Shows current status information.
- **RHYTHM LED:** Indicates current rhythm parameters.
- **MERGER CTRL (Hold for Delete):** Toggles independent/simultaneous operation of looper and drum machine. Hold to delete recorded tracks.
- **RHYTHM Control:** Selects rhythm type, speed (BPM), and volume.
- **Right Footswitch (STOP/PLAY/CLEAR):** Controls playback, stop, and clear functions for the looper. Also controls Play/Stop for the drum machine.
- **Left Footswitch (REC/DUB/TAP):** Controls record, dub, and playback in looper mode. Taps tempo for rhythm.

### 4.2 Looper Operation

1. **Recording:** Press the Left Footswitch (REC/DUB) once to start recording. The screen will show 'REC' and the recording time.
2. **Playback:** Press the Left Footswitch again to stop recording and start playback. The screen will show 'PLAY'.
3. **Dubbing:** During playback, press the Left Footswitch again to start dubbing (overdubbing). The screen will show 'DUB'.
4. **Stop:** Press the Right Footswitch (STOP/PLAY/CLEAR) once to stop playback/dubbing.
5. **Clear:** While stopped, hold the Right Footswitch to clear the current loop.
6. **Select Memory:** Use the LOOPER control knob to navigate through the 40 memory slots.

### 4.3 Drum Machine Operation

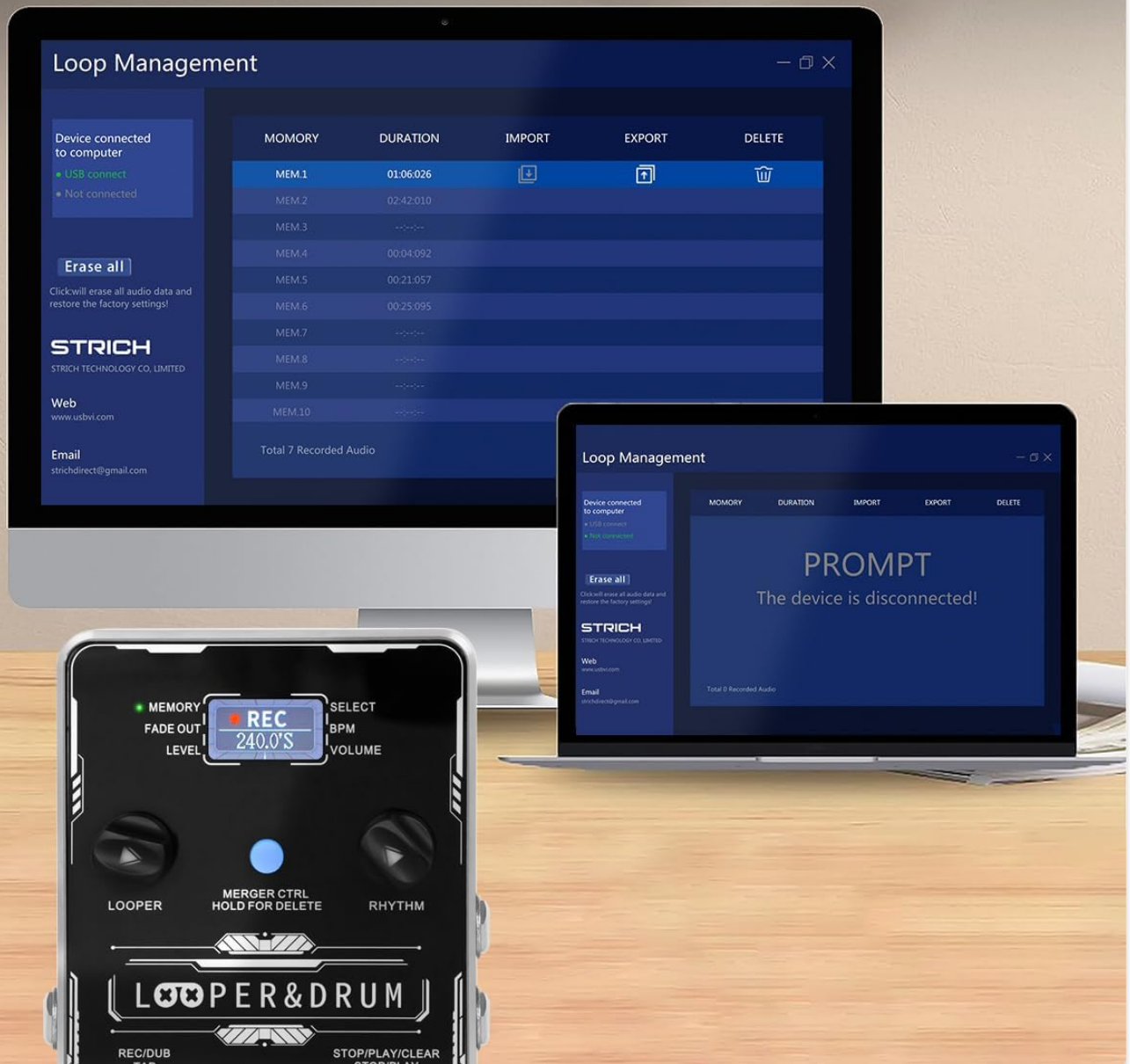
1. **Select Drum Pattern:** Use the RHYTHM control knob to select from 100 diverse drum patterns.
2. **Adjust BPM:** Press the RHYTHM control knob to enter BPM adjustment mode, then turn the knob to change the tempo.
3. **Adjust Volume:** Press the RHYTHM control knob again to enter volume adjustment mode, then turn the knob to change the drum volume.
4. **Tap Tempo:** Tap the Left Footswitch (REC/DUB/TAP) multiple times to set the tempo for the drum machine.

### 4.4 USB Functionality and Software

The pedal supports USB Type-C connectivity for managing your loops and settings via computer software. This allows for importing/exporting recorded files and performing factory resets.

# EDITOR SOFTWARE

supports import/export loop files and Factory Reset via editor software



Manage your loops and settings using the dedicated editor software.

## 4.5 Instructional Videos

For visual guidance on setup and operation, please refer to the official product videos:

Your browser does not support the video tag.

**Video: STRICH Looper Pedal Guitar Pedal with Drum Machine 2 IN 1**

*This video provides an overview and demonstration of the pedal's core functionalities, including basic looping*

and drum machine features.

Your browser does not support the video tag.

**Video: *STRICH Stereo Guitar Looper Pedal with Drum Machine 2 IN 1***

*A detailed demonstration of the stereo capabilities and integrated drum machine, showcasing various operational aspects.*

## 5. MAINTENANCE

- **Cleaning:** Use a soft, dry cloth to clean the pedal's surface. Avoid using abrasive cleaners or solvents.
- **Storage:** Store the pedal in a cool, dry place away from direct sunlight and extreme temperatures.
- **Handling:** Handle the pedal with care to prevent damage to the footswitches and knobs. Avoid dropping or subjecting it to strong impacts.
- **Power Disconnection:** Always disconnect the power supply when the pedal is not in use for extended periods.


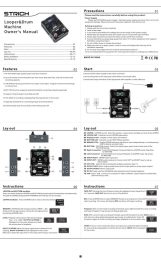




## 6. TROUBLESHOOTING

- **No Power:** Ensure the correct 9V DC, 300mA, center-negative power adapter is connected securely. Check the power outlet.
- **No Sound:** Verify all audio cables are correctly connected to inputs and outputs. Check instrument and amplifier volume levels. Ensure the pedal's volume is not set to zero.
- **Distorted Sound:** Check input levels to avoid clipping. Ensure proper impedance matching with your instruments and amplifier.
- **Loop Not Recording/Playing:** Ensure you are in the correct mode (REC/PLAY). Check if the memory slot is full or corrupted (try clearing it).
- **Drum Machine Issues:** Verify drum volume is up. Ensure a drum pattern is selected.
- **Software Connection Issues:** Ensure the USB cable is securely connected. Try a different USB port or cable. Restart your computer and the pedal.

## 7. SPECIFICATIONS

Feature	Detail
Model Number	LOOPER&DRUM
Item Weight	1.21 pounds (0.55 Kilograms)
Product Dimensions	6.69 x 4.33 x 2.95 inches
Material Type	Alloy
Power Source	Corded Electric
Voltage	9 Volts



	<p><a href="#"><u>STRICH Stereo Guitar Looper Pedal with Drum Machine: Instructions and Operation</u></a></p> <p>Comprehensive guide to operating the STRICH Stereo Guitar Looper Pedal with Drum Machine, detailing LOOPER+RHYTHM functions, MERGER CTRL, and external footswitch controls for musicians.</p>
	<p><a href="#"><u>STRICH Looper&amp;Drum Machine Owner's Manual - Features, Instructions, Specifications</u></a></p> <p>Comprehensive owner's manual for the STRICH Looper&amp;Drum Machine. Learn about its features, how to use the looper and drum machine functions, connect external devices, utilize the editor software, and view technical specifications.</p>
	<p><a href="#"><u>STRICH LOOPER Owner's Manual - Guitar Effect Pedal</u></a></p> <p>User manual for the STRICH LOOPER guitar effect pedal. Features 3 slots for saving loop tracks, USB for audio import/export, 90 minutes of recording time, and true bypass.</p>
	<p><a href="#"><u>STRICH GREY TUBE Owner's Manual - Guitar Effect Pedal</u></a></p> <p>Official owner's manual for the STRICH GREY TUBE guitar effect pedal. Learn about its features, controls, specifications, and important connection precautions for optimal use.</p>
	<p><a href="#"><u>STRICH ZEAL BLAST Owner's Manual - Guitar Effects Pedal</u></a></p> <p>Official owner's manual for the STRICH ZEAL BLAST guitar effects pedal, detailing its controls, connections, specifications, and important usage precautions for guitarists.</p>
	<p><a href="#"><u>STRICH MODULAR Guitar Effects Pedal Owner's Manual</u></a></p> <p>Official owner's manual for the STRICH MODULAR modulation ensemble guitar effects pedal, detailing its features, controls, specifications, and connection precautions.</p>