

Manuals+

[Q & A](#) | [Deep Search](#) | [Upload](#)

manuals.plus /

› [RICOO](#) /

› [RICOO Splash Foam Spray Cleaner User Manual](#)

RICOO Splash Foam Spray All-Purpose Cleaner

RICOO Splash Foam Spray Cleaner User Manual

Model: Splash Foam Spray All-Purpose Cleaner

Brand: RICOO

PRODUCT OVERVIEW

The RICOO Splash Foam Spray is an all-purpose cleaner designed to tackle stubborn grease and grime in various household areas. Its concentrated foam formula is effective on heavy oil buildup, providing a convenient solution for kitchen cleaning.



Image: The RICOO Splash Foam Spray product, showing two bottles and its packaging box.

This product is suitable for heavy oil areas such as range hoods, exhaust fans, sinks, and glass tiles. It is formulated to emulsify oil and dirt without causing damage to surfaces, ensuring a safe and efficient cleaning process.

SETUP AND PREPARATION

Before first use, ensure you have received all components as listed in the package contents. Each package typically includes two bottles of heavy oil cleaner.

1. **Uncap and Prepare:** Carefully take off the bottle cap. Locate and uncover the plastic foil seal on the bottle opening.
2. **Install Nozzle:** Firmly install the spray nozzle onto the bottle. Ensure it is securely attached to prevent leaks.
3. **Unlock Nozzle:** Rotate the nozzle to the "ON" or "SPRAY" position to open the spray mechanism.

HOW TO USE



STEP 1

Press 2-3 times to spray evenly on the area to be cleaned



STEP 2

Wait for 2-5 minutes to fully dissolve the oil stain



STEP 3

Wipe off the oil With a sponge or cloth

Image: Visual guide demonstrating the three steps for using the cleaner: spraying the surface, allowing it to sit, and wiping it clean.

OPERATING INSTRUCTIONS

Follow these steps for effective cleaning:

1. **Apply Spray:** Aim the nozzle at the oily surface you wish to clean. Press the trigger 2-3 times to spray the foam evenly over the affected area.
2. **Allow to Penetrate:** Wait for 5-20 minutes. This allows the foam to deeply penetrate and dissolve the oil stains and grime. For lighter stains, a shorter waiting time may suffice.
3. **Wipe Clean:** After the waiting period, wipe the surface with a damp cloth or sponge. No secondary cleaning or rinsing is typically required.

COMPARISON BEFORE AND AFTER USE 8 60HE

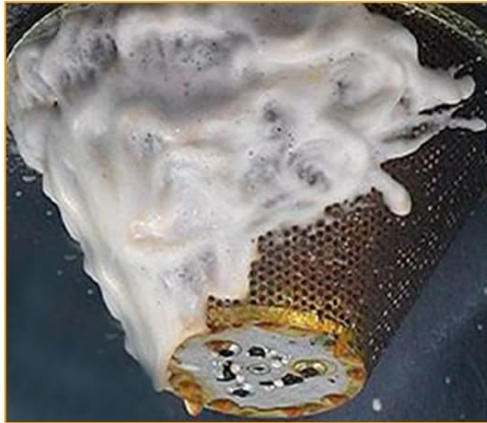


Image: A hand applying the foam spray directly onto a greasy range hood filter, illustrating the initial application step.

The cleaner is designed for versatile use across various kitchen surfaces. Examples include:

- Stovetops and gas burners
- Range hoods and exhaust fan filters
- Kitchen sinks
- Oven interiors (for light grease, not heavily baked-on carbon)
- Glass tiles and other hard surfaces with oil stains

HEAVY OIL FOAM CLEANER



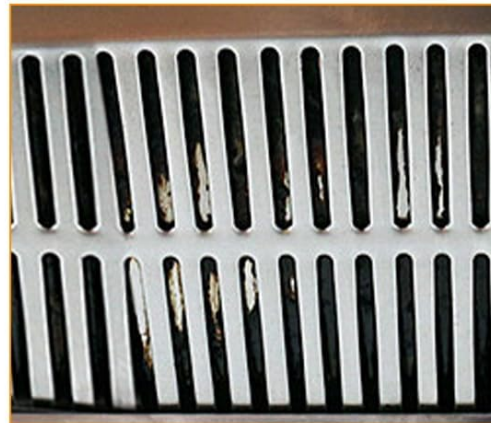
BEFORE



AFTER



BEFORE



AFTER

Image: A visual representation of multiple kitchen surfaces, such as stovetops, range hoods, and sinks, where the heavy oil foam cleaner can be effectively applied.

MAINTENANCE AND STORAGE

To ensure the longevity and effectiveness of your RICOO Splash Foam Spray, follow these maintenance and storage guidelines:

- **Nozzle Care:** After each use, if the nozzle appears clogged or sticky, rinse it under warm water to clear any residue. Ensure the nozzle is rotated to the "OFF" or "STOP" position before storing.
- **Bottle Storage:** Store the product in a cool, dry place, away from direct sunlight and extreme temperatures. Keep the bottle upright to prevent leakage.
- **Child Safety:** Always store the cleaner out of reach of children and pets.

TROUBLESHOOTING

If you encounter issues while using the RICOO Splash Foam Spray, consider the following:

Problem	Possible Cause	Solution
No foam or weak spray	Nozzle is clogged or not fully open. Bottle is nearly empty.	Ensure the nozzle is rotated to the "ON" position. Remove and rinse the nozzle under warm water to clear any blockages. Check product level.
Product not cleaning effectively	Insufficient contact time. Stain is too old or heavily baked-on. Uneven application.	Increase waiting time to 10-20 minutes. Ensure even and generous application. For extremely stubborn stains, multiple applications or a different specialized cleaner may be required. This product is designed for heavy oil, not carbonized residue.
Product leaked during delivery/storage	Cap not fully tightened or seal compromised.	Ensure the cap is tightly secured after use. If received damaged, contact the seller for assistance.
Missing components (e.g., sprayer, tablets)	Packaging error or damage during transit.	Contact the seller or retailer immediately to report the issue and request a replacement or missing parts.

SAY GOODBYE TO THE OIL STAINS IN THE KITCHEN

Quickly decompose heavy oil pollution, saving time and effort



No harm to kitchenware, extended lifespan



Rich foam, deep penetration, more awesome



Fresh, not pungent, gentle and not harmful to hands



Image: A visual comparison demonstrating the effectiveness of the cleaner on various surfaces, highlighting the transformation from dirty to clean.

SPECIFICATIONS

- **Net Content:** 60ml per bottle (typically sold as 2PCS)
- **Form:** Foam
- **Scent:** Orange
- **Specific Uses:** Stain Remover, Heavy Oil Areas (Range Hoods, Exhaust Fans, Sinks, Glass Tiles, Stovetops, Ovens)
- **Manufacturer:** RICOO
- **Package Dimensions:** 5.79 x 4.13 x 2.76 inches; 8.47 ounces (for 2pcs)

IMPORTANT SAFETY INFORMATION

Please read and adhere to the following safety precautions:

- **Ventilation:** Use in a well-ventilated area.
- **Skin and Eye Contact:** Avoid direct contact with skin and eyes. In case of contact, rinse thoroughly with water. If irritation persists, seek medical attention.
- **Ingestion:** Do not ingest. If swallowed, do not induce vomiting. Call a poison control center or doctor immediately.
- **Storage:** Keep out of reach of children and pets. Store in a cool, dry place.
- **Surface Compatibility:** While designed for various surfaces, always test on an inconspicuous area first to ensure compatibility, especially on delicate or painted surfaces.
- **Disposal:** Dispose of empty containers according to local regulations.

Legal Disclaimer: Statements regarding dietary supplements have not been evaluated by the FDA and are not intended to diagnose, treat, cure, or prevent any disease or health condition. (Note: This disclaimer is included as per source data, though its relevance to a cleaning product may vary.)

WARRANTY AND SUPPORT

For any product-related inquiries, concerns, or support needs, please contact the manufacturer, RICOO, or the retailer from whom you purchased the product. Please refer to your purchase receipt or the product packaging for specific contact information or warranty details, if applicable.

For general information or to provide feedback, you may visit the brand's official presence on Amazon [RICOO Brand Page](#).