

Ankilo CP210-MA06CA-KH

Ankilo Mini Bluetooth 5.3 Receiver/Transmitter

Model: CP210-MA06CA-KH

1. INTRODUCTION

The Ankilo Mini Bluetooth 5.3 Receiver/Transmitter is a versatile 2-in-1 audio adapter designed to add Bluetooth functionality to non-Bluetooth devices. Featuring the latest Bluetooth 5.3 technology, it ensures stable connections and a transmission range of up to 33 feet (10 meters). This device is suitable for use with cars, speakers, stereo systems, and headphones, allowing you to enjoy wireless audio streaming and hands-free calling.



Figure 1: Ankilo Mini Bluetooth 5.3 Receiver/Transmitter.

BT 5.3 Stable Connections



Figure 2: Highlighting Bluetooth 5.3 for stable connections, auto reconnect in RX mode, 33 ft signal range, and fast transmission.

2. PRODUCT OVERVIEW

Familiarize yourself with the device's components:



Figure 3: Labeled diagram of the Ankilo Bluetooth adapter. Key components include the Microphone, Multifunction Button (Power/Play/Pause), Indicator Light, Transmitter/Receiver (TX/RX) switch, Aux in/out port, and 5V/1A Charging port.

3. PACKAGE CONTENTS

Ensure all items are present in the package:

- 1 x Ankilo Mini Bluetooth 5.3 Receiver/Transmitter
- 1 x 3.5mm Audio Connector (new and old versions may be sent randomly)
- 1 x USB Charging Cable
- 1 x User Manual

4. SETUP AND CONNECTION

4.1. Receiver Mode (RX)

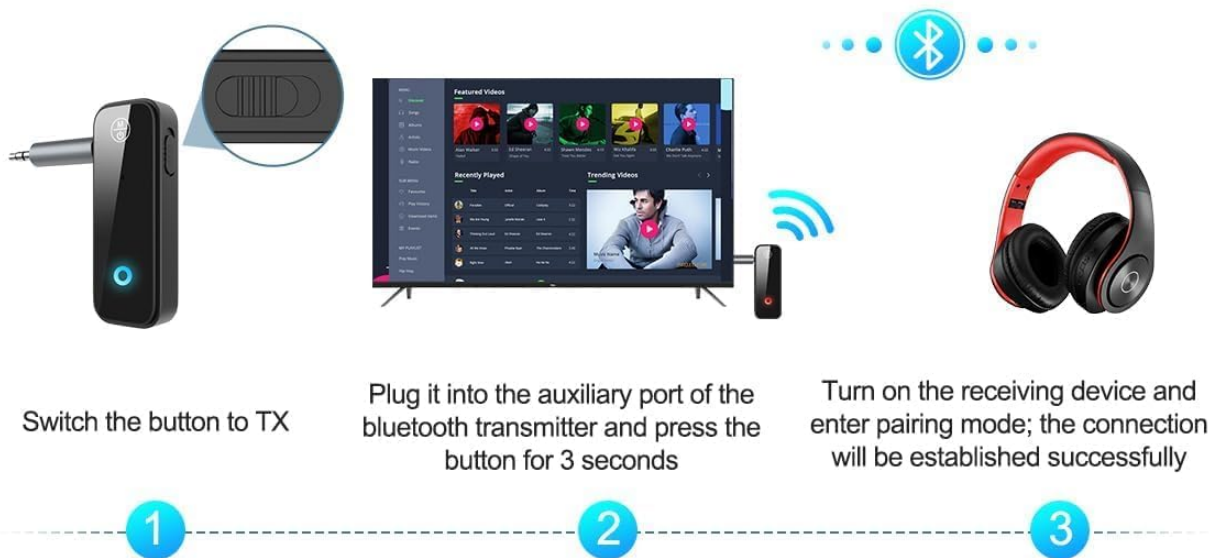
Use Receiver Mode to stream audio from your Bluetooth-enabled device (e.g., smartphone, laptop) to a non-Bluetooth audio system (e.g., car stereo, wired speakers, wired headphones).

1. **Switch to RX Mode:** Locate the TX/RX switch on the side of the adapter and slide it to the "RX" position.
2. **Connect to Audio System:** Plug the 3.5mm audio connector into the Aux in/out port of the Bluetooth adapter. Then, plug the other end of the 3.5mm audio connector into the auxiliary input port of your non-Bluetooth audio system.
3. **Power On and Pair:** Press and hold the Multifunction Button (power button) for 3 seconds to turn on the device. The indicator light will flash red and blue alternately, indicating it is in pairing mode.
4. **Pair with Your Device:** On your smartphone or other Bluetooth-enabled device, go to Bluetooth settings and search for "Ankilo" or "ZF-360" (or similar device name). Select it to connect. Once connected, the indicator light on the adapter will turn solid blue.

RX



TX



Note: Make sure there are no obstacles such as walls in between when connecting Bluetooth

Figure 4: Step-by-step visual guide for connecting in both Receiver (RX) and Transmitter (TX) modes.

4.2. Transmitter Mode (TX)

Use Transmitter Mode to stream audio from a non-Bluetooth audio source (e.g., TV, computer, MP3 player) to your Bluetooth headphones or speakers.

1. **Switch to TX Mode:** Locate the TX/RX switch on the side of the adapter and slide it to the "TX" position.
2. **Connect to Audio Source:** Plug the 3.5mm audio connector into the Aux in/out port of the Bluetooth adapter. Then, plug the other end of the 3.5mm audio connector into the auxiliary output port of your non-Bluetooth audio source (e.g., TV headphone jack).

3. **Power On and Pair:** Press and hold the Multifunction Button (power button) for 3 seconds to turn on the device. The indicator light will flash red and blue alternately, indicating it is in pairing mode.
4. **Pair with Bluetooth Headphones/Speakers:** Put your Bluetooth headphones or speakers into pairing mode. The adapter will automatically search and connect to your headphones/speakers. Once connected, the indicator light on the adapter will turn solid red.

Your browser does not support the video tag.

Video 1: General guide on how to use an Aux Bluetooth Adapter for Car. (Note: Product shown may vary slightly from Ankilo model.)

Your browser does not support the video tag.

Video 2: Demonstration of ensuring the audio plug is firmly inserted for optimal sound quality. (Note: Product shown may vary slightly from Ankilo model.)

5. OPERATING MODES AND FUNCTIONS

5.1. Hands-Free Calling

The adapter features a built-in HD microphone for convenient hands-free calling while driving or performing other tasks.

- **Answer/Hang Up Call:** Press the Multifunction Button once.
- **Reject Call:** Press and hold the Multifunction Button for 2 seconds.
- **Redial Last Number:** Double-press the Multifunction Button.

Clear Hands-free Calling

A safe, hands-free way to answer phones through your car stereo



Answer



Redial last number



Reject



Figure 5: Visual representation of hands-free calling functionality in a vehicle.

5.2. Music Playback Control

- **Play/Pause:** Press the Multifunction Button once.
- **Next Track:** Press the "+" button once.
- **Previous Track:** Press the "-" button once.
- **Volume Up:** Press and hold the "+" button.
- **Volume Down:** Press and hold the "-" button.

Universal Compatibility

Transmitter Mode (TX)



Receiver Mode (RX)



Figure 6: Illustrates the universal compatibility of the device in both Transmitter (TX) and Receiver (RX) modes with various devices like TVs, desktops, car audio systems, speakers, headphones, laptops, and phones.

6. CHARGING AND BATTERY LIFE

The Ankilo Mini Bluetooth adapter is equipped with a built-in rechargeable battery. A full charge takes approximately 2 hours and provides up to 8 hours of music playback or call time.

- **Charging:** Connect the provided USB charging cable to the 5V/1A Charging port on the adapter and to a USB power source. The red indicator light will be solid during charging and turn off when fully charged.

- **Low Battery Indication:** When the battery is low, the red indicator light will flash.

Long Battery Life



2 hours fast charging



USB charging port



8 hours music

Figure 7: Details on the device's 8-hour battery life, 2-hour fast charging, and USB charging port.

7. SPECIFICATIONS

Feature	Detail
Brand	Ankilo

Model	CP210-MA06CA-KH
Bluetooth Version	5.3
Operating Modes	Receiver (RX) & Transmitter (TX)
Transmission Range	Up to 33 feet (10 meters)
Battery Life	Approx. 8 hours (music/call)
Charging Time	Approx. 2 hours
Charging Port	5V/1A (USB)
Audio Input/Output	3.5mm Auxiliary
Built-in Microphone	Yes (HD)
Material	Plastic
Product Dimensions	6.7 x 1.8 x 10 cm; 30 g

8. TROUBLESHOOTING

- **Device not powering on:** Ensure the device is fully charged. Connect it to a power source using the USB cable.
- **Cannot pair with a device:**
 - Ensure the adapter is in the correct TX or RX mode.
 - Make sure the adapter is in pairing mode (red and blue lights flashing alternately).
 - Ensure the target device (phone, headphones, speaker) is also in pairing mode.
 - Turn off and on the Bluetooth function on your device and try searching again.
 - Clear previous Bluetooth connections on both devices if necessary.
- **No audio or low audio:**
 - Check that the 3.5mm audio connector is fully and firmly inserted into both the adapter and the audio system/source.
 - Ensure the volume on both the adapter and the connected audio device is turned up.
 - Verify that the adapter is correctly connected to the audio source/system (TX mode for output, RX mode for input).
- **Intermittent connection:** Ensure there are no significant obstacles (like walls) between the adapter and the connected Bluetooth device. Keep devices within the 33-foot (10-meter) range.

9. SAFETY INFORMATION

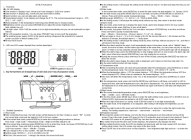
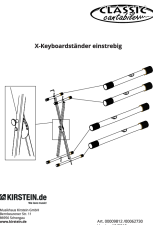



- Do not expose the device to extreme temperatures, moisture, or corrosive environments.
- Do not disassemble or attempt to repair the device yourself.
- Keep out of reach of children.
- Note: This adapter is not suitable for SONY devices. Please confirm compatibility before purchase.

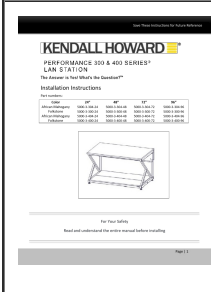
10. WARRANTY AND SUPPORT

Ankilo offers a 12-month quality protection warranty and 60 days free replacement for this product. For any questions or concerns, please contact our customer support. We are committed to responding within 24 hours to assist you.



Related Documents - CP210-MA06CA-KH

	<p>Ankilo 3618LP Projection Alarm Clock User Manual</p> <p>User manual for the Ankilo 3618LP Projection Alarm Clock, detailing its functions, operation, alarm settings, temperature display, night mode, and projection features. Includes instructions for time, date, and alarm setup.</p>
	<p>Kirstein KH-10 Stereo Headphones - User Manual & Specifications</p> <p>Detailed user manual and technical specifications for the Kirstein KH-10 dynamic stereo headphones. Learn about safety, handling, maintenance, and features.</p>
	<p>CLASSIC cantabile KH-10 Stereo Headphones - User Manual and Technical Specifications</p> <p>Comprehensive guide for the CLASSIC cantabile KH-10 stereo headphones, covering safety precautions, handling, maintenance, cleaning, and detailed technical specifications from Musikhaus Kirstein GmbH.</p>
	<p>KH-10 Dynamic Stereo Headphones - User Manual and Specifications</p> <p>User manual and technical specifications for the KH-10 dynamic stereo headphones by CLASSIC cantabile, including precautions, handling, maintenance, and WEEE declaration. Manufactured by Musikhaus Kirstein GmbH.</p>
	<p>Classic Cantabile KH-10 Headphones & Keyboard Stand User Information</p> <p>User information for Classic Cantabile KH-10 dynamic stereo headphones, including safety precautions, technical specifications, and handling instructions. Also includes details for the Classic Cantabile X-Keyboarständer einstrebig (single-braced keyboard stand).</p>



[Kendall Howard Performance Series LAN Station / Workbench Installation Instructions](#)

This document provides comprehensive installation and maintenance instructions for Kendall Howard Performance Series LAN Stations and Workbenches. It includes part identification, detailed assembly steps, specifications, and warranty information.