

Weecrestar APPC-SPLM2*2-C

User Manual: Smart Curtain Lights

Brand: Weecrestar | Model: APPC-SPLM2*2-C

INTRODUCTION

The Weecrestar Smart Curtain Lights (Model: APPC-SPLM2*2-C) offer a versatile lighting solution for both indoor and outdoor environments. These 6.56 x 6.56 feet (2 x 2m) lights feature 400 advanced, individually isolated RGBIC LED beads, ensuring consistent display even if a single LED malfunctions. With extensive customization options via a dedicated app and remote control, users can create dynamic scenes, programmable text, and synchronize lights with music. The lights are designed for various occasions, including holidays, parties, and daily decorative use, and are IP65 waterproof for outdoor applications (controller and adapter require sealing for outdoor use).

WHAT'S IN THE BOX

- 1 x Smart Curtain Lights (6.56 x 6.56 ft, 400 LED beads)
- 1 x Remote Control
- 20 x Hooks
- 1 x Plug Adapter
- 1 x Detailed User Manual
- Adhesive tape (not included)

Note: Crystal balls (additional decor) are included to help straighten strings.

SETUP INSTRUCTIONS

Follow these steps for proper installation of your Smart Curtain Lights:

1. 1. Prepare the Installation Area

Ensure the installation surface is clean and suitable for hanging. The lights can be hung on nails, existing curtain hooks, or using adhesive tape (not included).

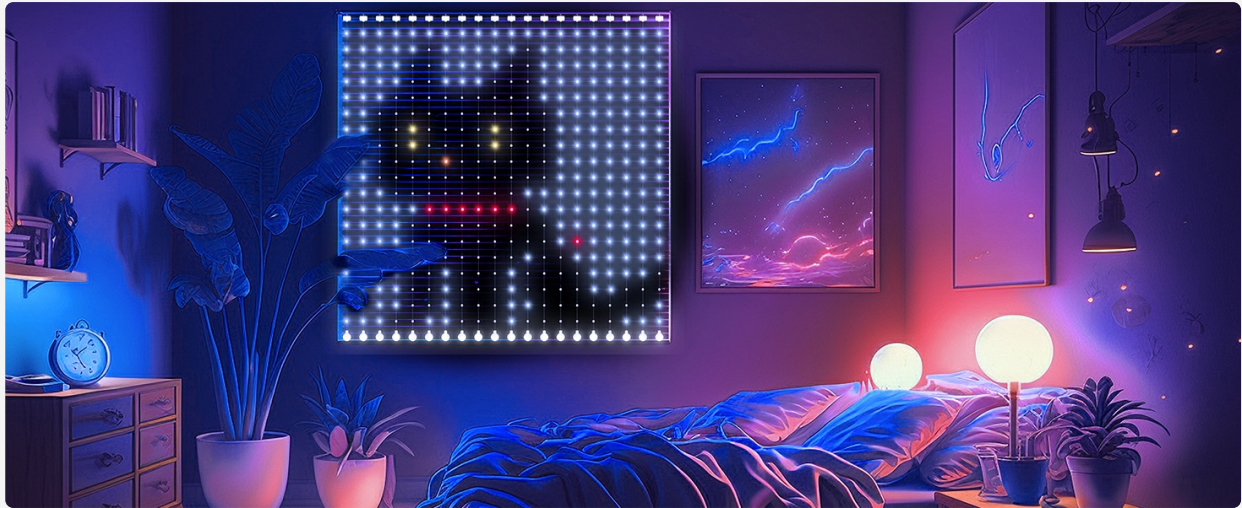


Image: A horizontal image illustrating the four key installation steps: hanging hooks, arranging strings, connecting the power adapter, and downloading the app.

OPERATING INSTRUCTIONS

Your Weecrestar Smart Curtain Lights offer multiple ways to control and customize your lighting experience:

App Control (Recommended)

The dedicated "Surplife - Free App Weecrestar" app provides the most comprehensive control over your lights. Connect via Wi-Fi or Bluetooth for seamless operation.

- **Dynamic Scene Modes:** Access over 253 constantly updated animations and themes for various occasions like holidays (4th of July, Christmas, Halloween), birthdays, and special events.
- **Programmable Text:** Utilize the 16,777,216 color-based programmable text features to display custom messages or flowing long text. This is ideal for shops, bars, or personal messages.
- **DIY Canvas:** Express your creativity with 5 DIY canvas layers. Draw massive pictures and add dimension to your lighting effects with high pixel density.
- **Music Sync Modes:** Choose from 10 music rhythm modes to synchronize the lights with your playlist. The lights can react to the beat either through the app or by direct device microphone interaction.
- **Schedule & Timer:** Set precise schedules for turning the lights ON/OFF and selecting specific effects at designated times.

Your browser does not support the video tag.

Video: Demonstration of various dynamic effects, programmable text, and music sync features of the Weecrestar Smart Curtain Lights, controlled via the mobile application.

Remote Control

The included 2.4G remote control offers convenient access to basic functions and pre-set modes. Ensure the resistance slice is removed before first use.

- Power ON/OFF
- Cycle through various pre-programmed effects

- Adjust brightness and speed of effects
- Activate device microphone reaction for music sync



Image: The Smart Curtain Lights displaying a heart pattern, with the remote control and mobile app interface visible, illustrating control options.

MAINTENANCE

- **Cleaning:** Gently wipe the LED strings with a soft, dry cloth. Do not use harsh chemicals or abrasive materials.
- **Storage:** When not in use, carefully coil the light strings to prevent tangling. Store them in a cool, dry place, away from direct sunlight and extreme temperatures. The original gift box is suitable for storage.
- **Outdoor Use:** While the lights are IP65 waterproof, the controller and adapter are NOT waterproof. For outdoor installation, ensure the controller and adapter are properly sealed and protected from moisture and direct rain.
- **LED Longevity:** The isolated LED design ensures that if one LED stops working, the entire display remains

functional. No specific user maintenance is required for individual LEDs.

TROUBLESHOOTING

Problem	Possible Cause	Solution
Lights do not turn on.	No power, loose connection, remote battery dead.	<ul style="list-style-type: none">◦ Check if the power adapter is securely plugged into a working outlet.◦ Ensure the light string connector is fully inserted and tightened to the adapter.◦ Verify the remote control battery is functional (remove resistance slice if new).
Remote control not responding.	Battery issue, obstruction, out of range.	<ul style="list-style-type: none">◦ Replace the remote control battery.◦ Ensure no obstructions between the remote and the light controller.◦ Operate the remote within its effective range.
App cannot connect to lights.	Bluetooth/Wi-Fi issue, app not updated.	<ul style="list-style-type: none">◦ Ensure Bluetooth is enabled on your device and the lights are within range.◦ Check your Wi-Fi connection and ensure the lights are connected to the correct network (if applicable).◦ Restart the app and/or your mobile device.◦ Ensure the app is updated to the latest version.
Lights are tangled.	Improper handling during installation or storage.	<ul style="list-style-type: none">◦ Carefully untangle the strings. For future use, coil them neatly during storage.◦ Utilize the provided hooks and crystal balls to maintain string separation during installation.

SPECIFICATIONS

Feature	Detail
Model Number	APPC-SPLM2*2-C
Dimensions	6.56 x 6.56 feet (2 x 2 meters)
Number of LEDs	400 advanced & isolated light beads
Light Source Type	LED (RGBIC)
Color Options	16,777,216 color base

Feature	Detail
Control Method	App Control (Wi-Fi & Bluetooth), Remote Control
Special Features	Pictures, DIY Function, Animated, Programmable Text, Music Rhythm
Indoor/Outdoor Usage	Outdoor, Indoor
Water Resistance Level	IP65 Waterproof (lights only; controller/adaptor not waterproof)
Power Source	Corded Electric (5 Volts DC)
Material	Copper (wiring), Plastic (shades)
Item Weight	2.72 pounds


WARRANTY AND SUPPORT

Weecrestar is committed to customer satisfaction. For any questions, issues, or support needs regarding your Smart Curtain Lights, please contact our customer service team. We are dedicated to helping our customers solve any problem 24 hours a day.

While specific warranty terms are not detailed here, please retain your purchase receipt for any potential claims. For the most up-to-date warranty information and support contact details, refer to the official Weecrestar website or the contact information provided in your product packaging.

© 2024 Weecrestar. All rights reserved.

Related Documents - APPC-SPLM2*2-C

<div></div> <div>User Manual</div> <div><small>Model: H70D1 Govee Icicle Lights</small></div>	<p>Govee H70D1 Icicle Lights, H70C5 Christmas String Lights 2, H70B3 Curtain Lights 2 User Manual</p> <p>Comprehensive user manual for Govee H70D1 Icicle Lights, H70C5 Christmas String Lights 2, and H70B3 Curtain Lights 2. Includes safety instructions, installation guides, app pairing, troubleshooting, specifications, and FCC compliance information.</p>
--	---

 User Manual <small>Model: H70C4 Govee Christmas String Lights 2</small>	<p>Govee H70C4 Christmas String Lights 2 User Manual</p> <p>User manual for the Govee H70C4 Christmas String Lights 2, providing detailed instructions on safety, installation, app pairing, specifications, troubleshooting, and customer support.</p>
	<p>Home Accents Holiday TY-B-50L/2W-C9-C LED Lights: Safety, Use, and Care Instructions</p> <p>Comprehensive safety, use, and care instructions for Home Accents Holiday's TY-B-50L/2W-C9-C LED lights, including important precautions and troubleshooting tips for indoor and outdoor use.</p>
 User Manual <small>Model: H705E Govee Permanent Outdoor Lights 2</small>	<p>Govee Smart Lighting User Manuals: Permanent Outdoor Lights, String Lights, Curtain Lights</p> <p>Comprehensive user manuals for Govee Permanent Outdoor Lights 2 (H705E), Govee Outdoor String Lights 2 (H7038), and Govee Curtain Lights 2 (H70B3). Includes safety, setup, pairing, specifications, and troubleshooting.</p>
	<p>MEIKEE MK23 Solar Spotlights User Manual</p> <p>User manual for the MEIKEE MK23 solar spotlights, detailing specifications, installation, and operation for outdoor garden lighting. Features include color-changing, dual color temperature, IP66 waterproof rating, and dimmable modes.</p>
	<p>Enbrighten Mini LED Color Changing Landscape Lights Installation Guide</p> <p>Comprehensive guide for installing and operating Enbrighten Mini LED Color Changing Landscape Lights, including setup, mounting, remote control usage, and safety information.</p>