

[Manuals.plus](#) /

› [JUBEST](#) /

› JUBEST 8FT Box Rail Exterior Barn Door Hardware Kit Instruction Manual

JUBEST 8FT

JUBEST 8FT Box Rail Exterior Barn Door Hardware Kit Instruction Manual

Model: 8FT

1. PRODUCT OVERVIEW

This manual provides instructions for the JUBEST 8FT Box Rail Exterior Barn Door Hardware Kit. This heavy-duty silver sliding barn door track system is designed for wall-mount applications, suitable for exterior barn doors. It is engineered with industrial-grade roll-formed galvanized steel, ensuring durability and smooth operation for doors weighing up to 450 lbs.

The kit supports door panels with a thickness of 1-3/8" to 1-3/4". Its corrosion-resistant galvanized coating ensures longevity in various outdoor conditions.



Image 1: Overview of the JUBEST Box Rail Barn Door Hardware Kit, highlighting high quality, easy installation, weatherability, and smooth sliding features.

2. PACKAGE CONTENTS

Verify all components are present before beginning installation. The package includes:

- 2 x 48" Track sections
- 2 x Track end caps
- 5 x Track brackets
- 2 x Hangers with door strap
- 1 x Galvanized steel floor guide
- 2 x Stoppers
- Step-by-step instructions (this manual)

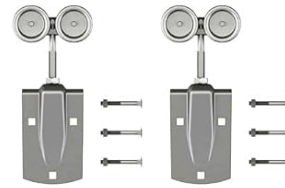
Note: Door panel and handle are NOT included.

Package List

Note: Doors are not Included



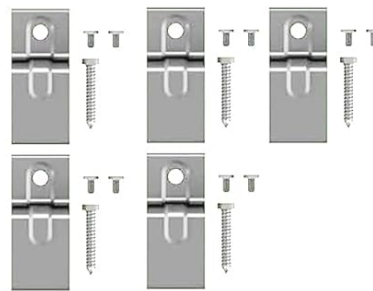
4FT Track x2



Roller x2



Stopper x2



Track brackets x5



Track end caps x2



Floor Guide x1

Image 2: Detailed view of all components included in the JUBEST Box Rail Barn Door Hardware Kit, such as tracks, rollers, stoppers, track brackets, end caps, and floor guide.

3. SETUP AND INSTALLATION

This hardware kit is designed for easy DIY setup. No specialty tools are required for installation.

3.1 Pre-Installation Considerations

- Ensure your door panel is between 1-3/8" and 1-3/4" thick.
- The maximum door width supported by this 8FT kit is 48".
- The system is designed for wall-mount installation. Ensure your wall structure can support the door weight (up to 450 lbs) and the hardware.

3.2 Installation Steps

Follow these general steps for installation. Refer to the detailed step-by-step instructions included in your package for precise

measurements and drilling guidance.

1. **Step 1: Mount the Track Brackets and Track.** Securely attach the track brackets to the wall at the appropriate height. Then, connect the 48" track sections and mount them onto the installed brackets. Pre-drilled holes on the track facilitate this process.
2. **Step 2: Attach Hangers to the Door.** Install the hangers with door straps to the top edge of your barn door panel. Ensure they are evenly spaced and securely fastened.
3. **Step 3: Install the Door.** Carefully lift the door panel and hook the hanger rollers onto the mounted track.
4. **Step 4: Install Stoppers and Floor Guide.** Position the stoppers at the ends of the track to prevent the door from sliding off. Install the galvanized steel floor guide at the bottom to prevent the door from swinging out. The floor guide installs securely on the wall, eliminating the need for floor holes.

Easy Installation

Note: Doors are not Included

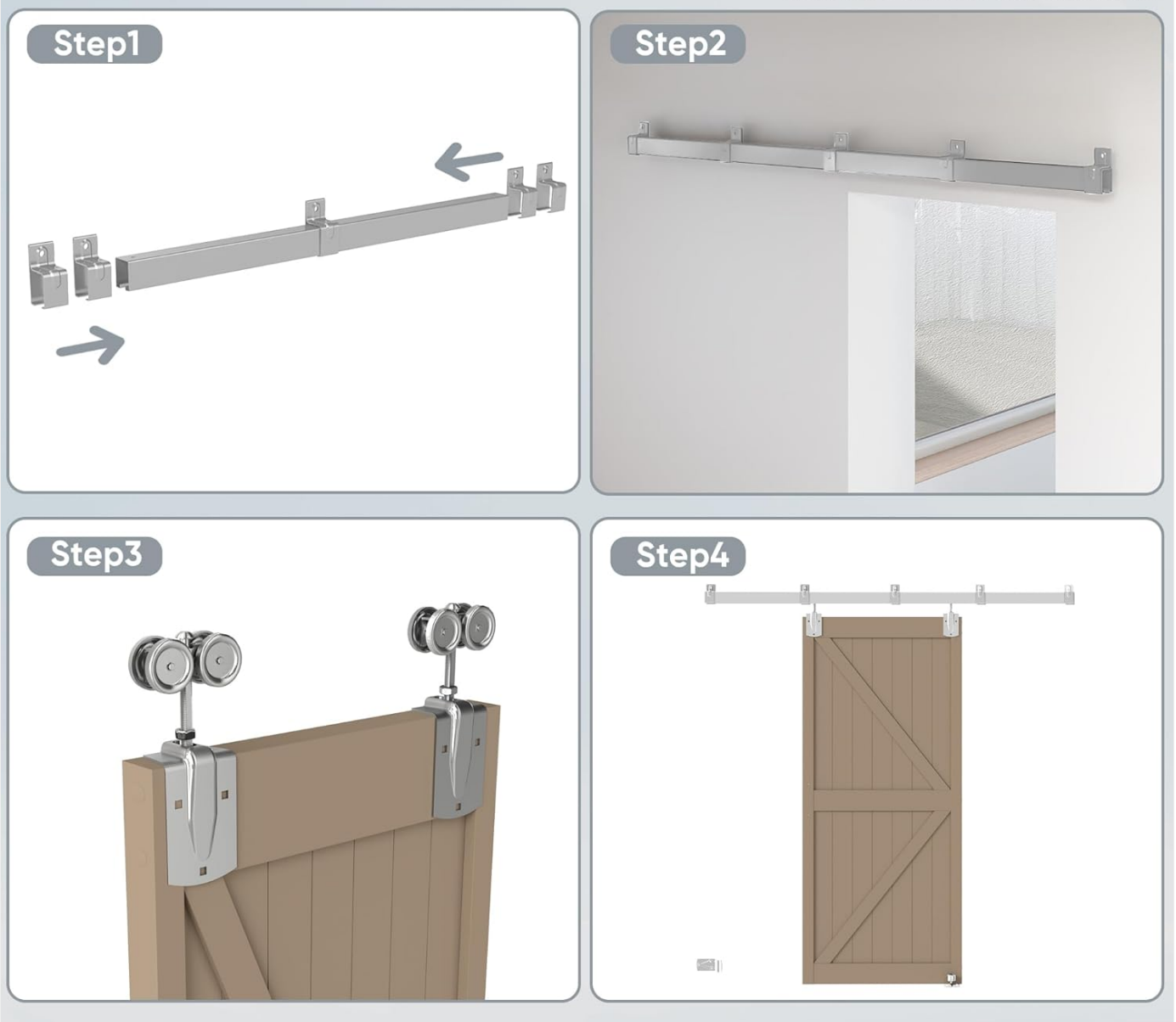


Image 3: Visual representation of the four main installation steps: mounting the track, attaching hangers to the door, hanging the door, and installing stoppers and floor guide.

Product Size

Note: Doors are not Included

Door Weight
Limit: **450lbs**



| SIZE OPTION | TRACK LENGTH | FIT DOOR WIDTH | FIT DOOR OPENING WIDTH |
|-------------|--------------|----------------|------------------------|
| 4FT | 4FT | 2FT | Door Width-4" |
| 5FT | 2.5FT x2 | 2.5FT | Door Width-4" |
| 6FT | 3FT x2 | 3FT | Door Width-4" |
| 6.6FT | 3.3FT x2 | 3.3FT | Door Width-4" |
| 7.5FT | 3.75FT x2 | 3.75FT | Door Width-4" |
| 8FT | 4FT x2 | 4FT | Door Width-4" |
| 9FT | 4.5FT x2 | 4.5FT | Door Width-4" |
| 10FT | 3.33FT x3 | 5FT | Door Width-4" |
| 12FT | 4FT x3 | 6FT | Door Width-4" |

Image 4: Close-up of key hardware components: the smooth operation hanger with flexible ball-bearings, the galvanized steel wall mount bracket, and the wall mount floor guide.

4. OPERATING INSTRUCTIONS

Once installed, the JUBEST Box Rail Barn Door Hardware Kit provides smooth and quiet operation.

- To open the door, gently push or pull the door panel along the track until it reaches the desired open position. The precision double-axis steel rollers ensure frictionless movement.
- To close the door, slide the door panel back along the track until it meets the door frame or the other door panel (for double door configurations).
- The stoppers at the ends of the track will prevent the door from over-sliding.
- The floor guide maintains the door's alignment and prevents it from swaying.

Your browser does not support the video tag.

Video 1: Demonstration of the smooth operation of the JUBEST Box Rail Barn Door Hardware Kit in a barn setting, showcasing the sliding mechanism.

5. MAINTENANCE

Regular maintenance ensures the longevity and optimal performance of your barn door hardware.

- **Cleaning:** Periodically wipe down the track and rollers with a damp cloth to remove dust and debris. Avoid abrasive cleaners that could damage the galvanized finish.
- **Lubrication:** If the door's movement becomes less smooth over time, apply a silicone-based lubricant to the roller bearings and along the top of the track. Do not use oil-based lubricants as they can attract dirt.
- **Hardware Inspection:** Annually inspect all screws, bolts, and connections to ensure they are tight. Re-tighten any loose fasteners to maintain stability and safety.
- **Weather Protection:** The galvanized steel is corrosion-resistant. However, for prolonged exposure to harsh weather, ensure end caps are properly seated to protect the track interior.

6. TROUBLESHOOTING

If you encounter issues with your barn door hardware, refer to the following common solutions:

- **Door is difficult to slide:**
 - Check the track for any obstructions or debris and clean if necessary.
 - Apply lubricant to the rollers and track as described in the Maintenance section.
 - Ensure the track is level and securely mounted. Uneven installation can cause friction.
- **Door is wobbly or shaky:**
 - Verify all mounting screws and bolts for the track and hangers are tightened.
 - Check that the floor guide is properly installed and securing the bottom of the door.
- **Noise during operation:**
 - Lubricate the rollers and track.
 - Inspect rollers for any damage or wear; replace if necessary.

7. SPECIFICATIONS

| Feature | Specification |
|------------------------------|-----------------------|
| Model Number | 8FT |
| Material | Galvanized Steel |
| Color | Silver |
| Item Weight | 15 pounds |
| Product Dimensions | 1.78 x 96 x 88 inches |
| Max Door Weight | 450 lbs |
| Door Panel Thickness | 1-3/8" to 1-3/4" |
| Max Door Width (for 8FT kit) | 48" |
| Usage | Outside; Professional |



Image 5: Product size chart illustrating track length, fit door width, and fit door opening width for various JUBEST barn door hardware kits, including the 8FT model.

8. WARRANTY AND SUPPORT

JUBEST is committed to providing quality products and excellent customer service.

- For any quality problems, missing parts, or installation issues, please contact our professional customer service team.
- Our customer service team is available online to assist you.
- Refer to the product packaging or the official JUBEST website for specific warranty details and contact information.



