

EVURU DDS662

EVURU Digital Single Phase Energy Meter Instruction Manual

Models: DDS662, DDS667, DDS668

1. INTRODUCTION

This manual provides detailed instructions for the installation, operation, and maintenance of the EVURU Digital Single Phase Energy Meter. This device is designed to measure active energy (kWh), voltage, current, and power consumption in single-phase AC circuits. Please read this manual thoroughly before installation and use to ensure safe and correct operation.

2. SAFETY INFORMATION

- Installation and maintenance should only be performed by qualified personnel.
- Ensure the power supply is disconnected before any installation or wiring work.
- Do not operate the meter in environments with excessive moisture, dust, or corrosive gases.
- Verify all connections are secure and correct according to the wiring diagrams to prevent damage to the meter or electrical system.
- The meter is designed for indoor use only.

3. PRODUCT OVERVIEW AND FEATURES

The EVURU Digital Single Phase Energy Meter is a compact device for DIN rail installation, offering precise measurement of electrical parameters. Key features include:

- LCD display with backlight for clear readings.
- Measures total Energy (kWh), temporary Energy (kWh), real Voltage (V), real Current (A), and real Power (W).
- Pulse LED indicator for active energy measurement.

- 35mm DIN rail mounting.
- Temporary kWh can be reset to zero. Total kWh is non-resettable.

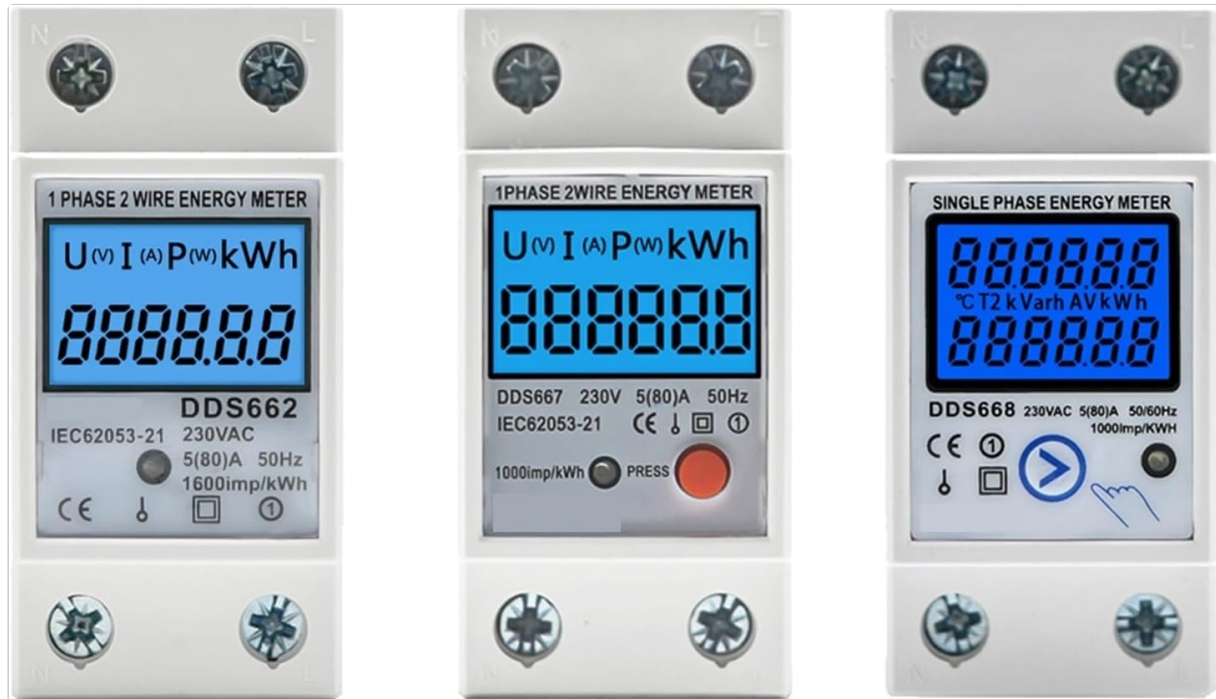



Figure 1: Overview of DDS662, DDS667, and DDS668 models.



	Without Backlight	With Backlight	DDS667	DDS668
LCD Display	✓	✓	✓	✓
Electricity Consumption	✓	✓	✓	✓
Voltage	✓	✓	✓	✓
Power	✓	✓	✓	✓
Current	✓	✓	✓	✓
With Backlight		✓	✓	✓
Temporary Power			✓	✓
Manual Switching			✓	✓
Power Factor				✓
Frequency				✓
Zeroable			✓	✓

Figure 2: Feature comparison table for DDS662, DDS667, and DDS668 models.

4. SPECIFICATIONS

Parameter	Value
Maximum Current	80A
Pulse Frequency	1000imp / kWh
Nominal Voltage	220V AC
Installation	35mm DIN Rail
Display Type	LCD with Backlight
Measured Parameters	Total kWh, Temporary kWh, Voltage, Current, Power
Temporary kWh Reset	Yes (hold button for 6 seconds)
Total kWh Reset	No
Wiring Modes	Upper input lower output, Lower input upper output
Item Weight	0.035 ounces (approx. 1 gram)

5. INSTALLATION (SETUP)

5.1 Dimensions

Before installation, ensure adequate space for the meter. The dimensions are suitable for standard DIN rail enclosures.

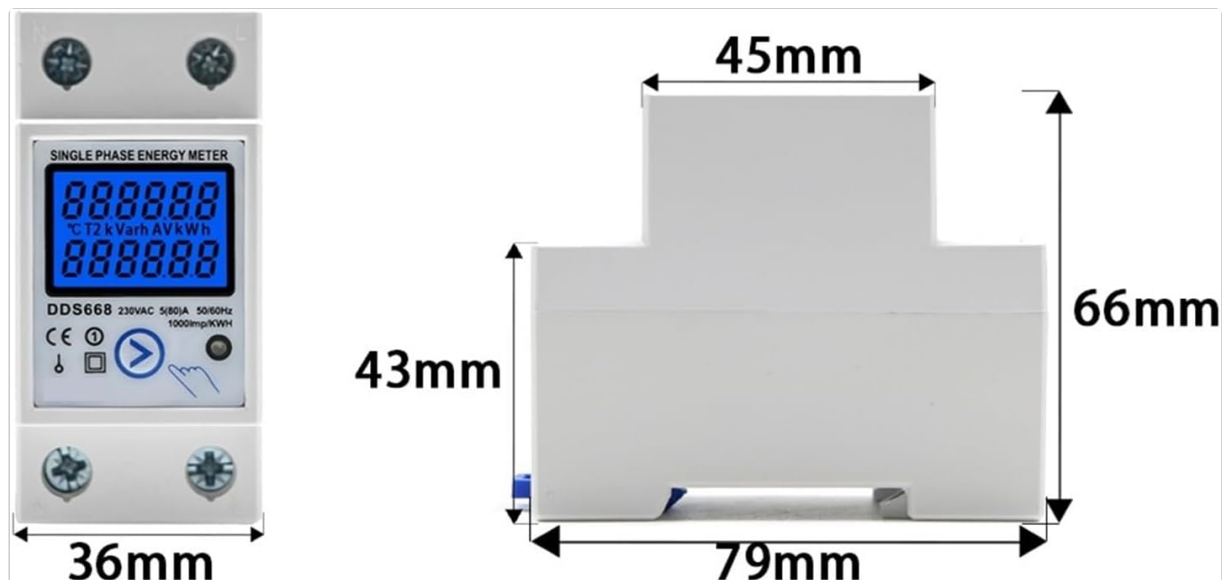


Figure 3: Meter dimensions (example shown for DDS668).

5.2 DIN Rail Mounting

The meter is designed for 35mm DIN rail installation. Simply clip the meter onto the DIN rail in your electrical panel.

5.3 Wiring Diagrams

Ensure all power is OFF before proceeding with wiring. Connect the meter according to the appropriate diagram for your model and desired wiring mode.

5.3.1 DDS662 Wiring

The DDS662 model typically uses a direct connection for single-phase two-wire systems.

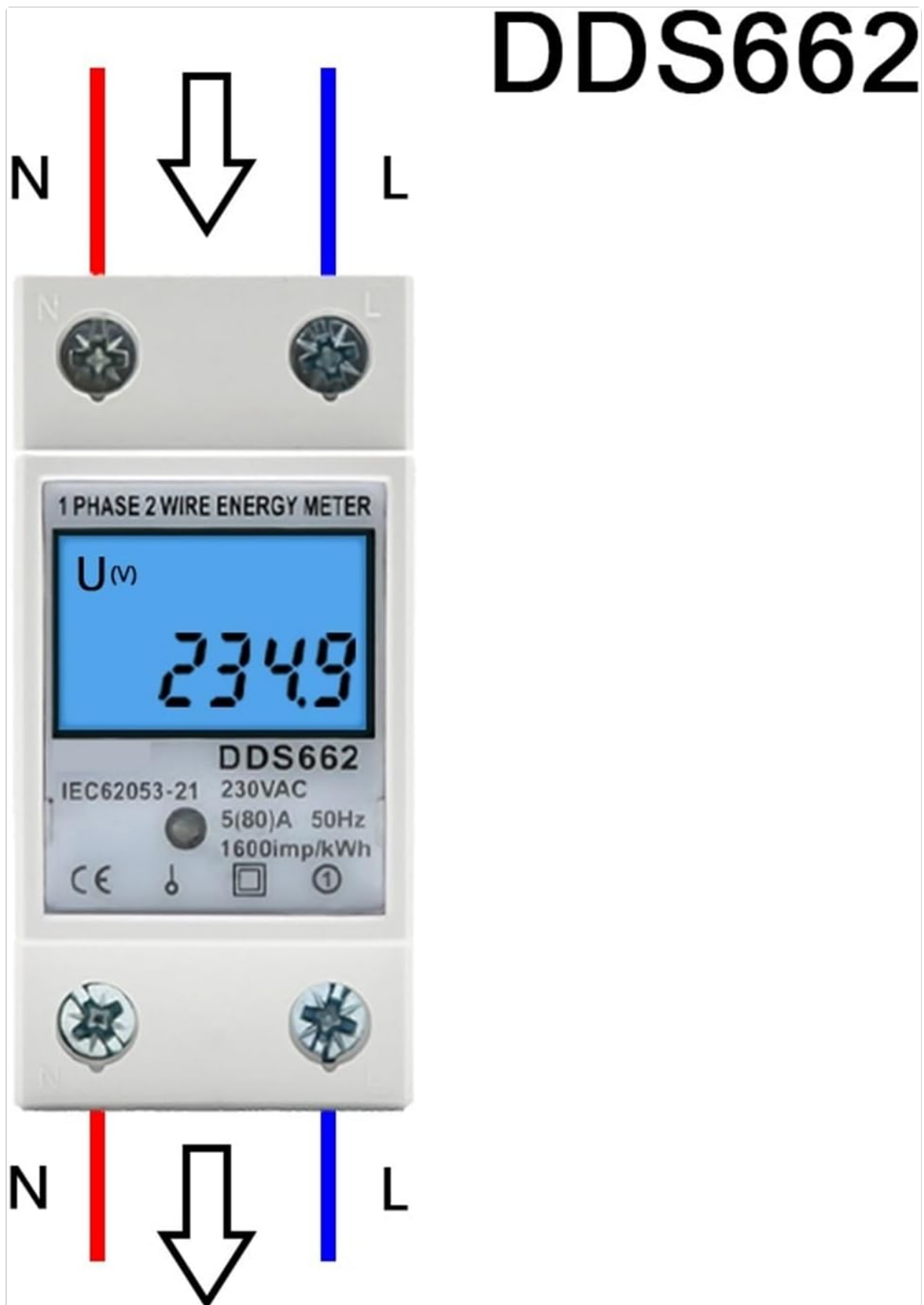


Figure 4: Wiring diagram for DDS662 model.

5.3.2 DDS667 Wiring

The DDS667 model can be integrated with circuit breakers for protection.

DDS667

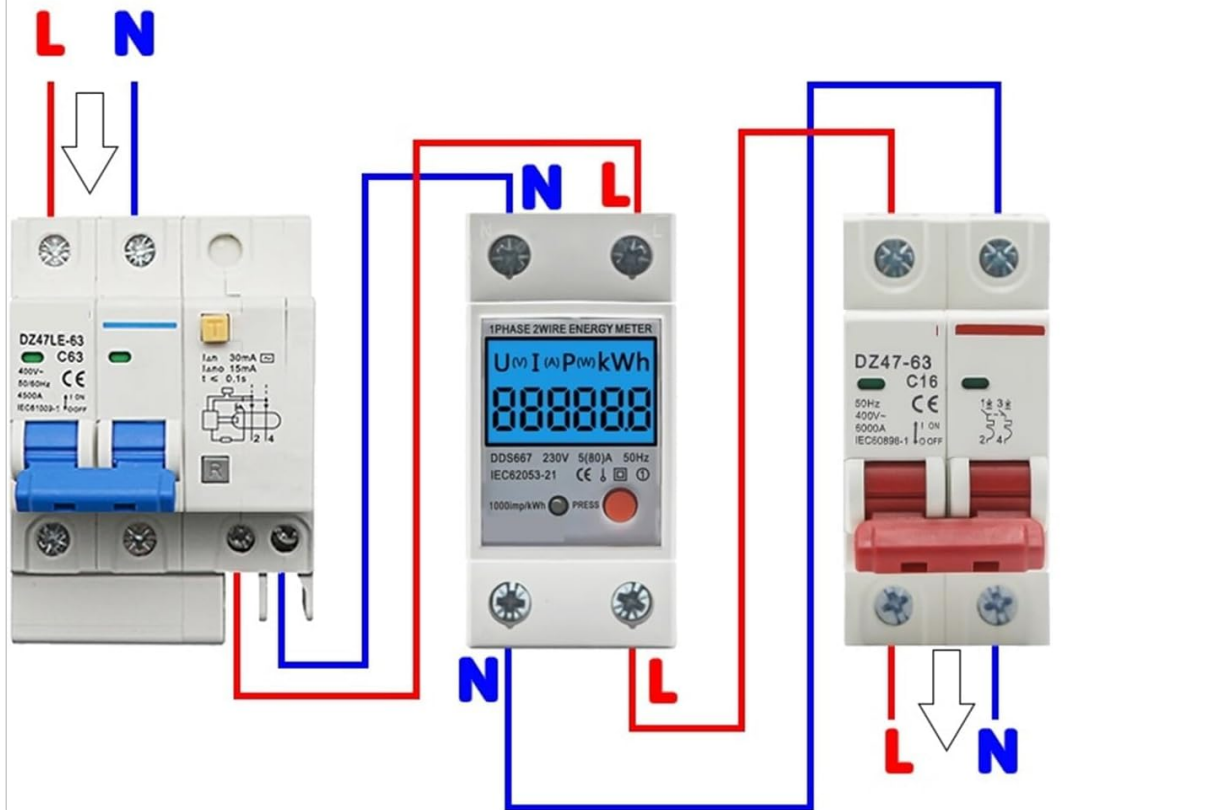


Figure 5: Wiring diagram for DDS667 model, showing integration with circuit breakers.

5.3.3 DDS668 Wiring Modes

The DDS668 model supports two wiring configurations: upper input/lower output and lower input/upper output.

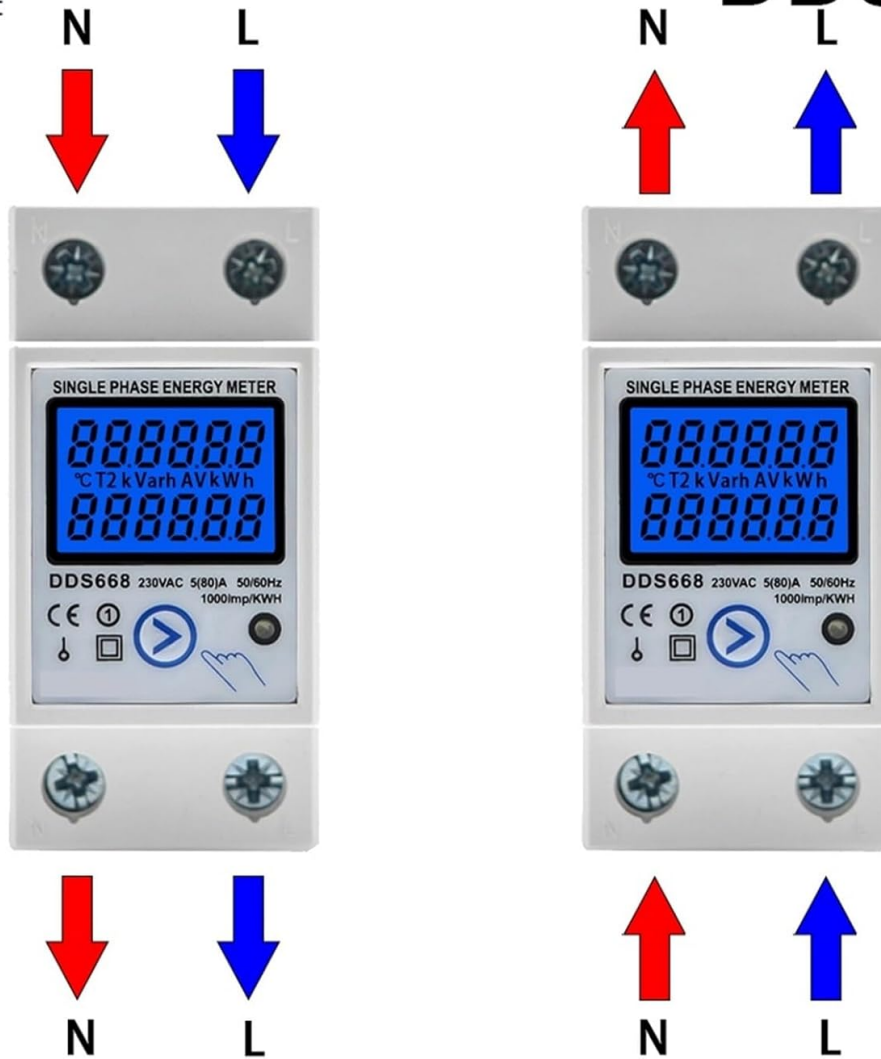


Figure 6: Wiring diagrams for DDS668 model, illustrating upper input/lower output and lower input/upper output modes.

6. OPERATION

6.1 Power On

Once correctly wired and mounted, restore power to the circuit. The LCD display will illuminate, showing the current readings.

6.2 Reading Displayed Values

The meter cycles through various parameters on its LCD display. You can manually press the button (if available on your model, e.g., DDS667, DDS668) to cycle through:

- Total Energy (kWh)
- Temporary Energy (kWh)
- Real Voltage (V)
- Real Current (A)
- Real Power (W)

The pulse LED will flash to indicate active energy measurement.

6.3 Resetting Temporary kWh

To reset the temporary kWh reading to zero, press and hold the button on the front of the meter for approximately 6 seconds. Note that the total kWh reading cannot be reset.

7. MAINTENANCE

The EVURU Digital Single Phase Energy Meter requires minimal maintenance.

- Keep the meter clean and free from dust. Use a soft, dry cloth for cleaning.
- Do not use abrasive cleaners or solvents.
- Regularly inspect wiring connections for tightness and signs of wear or damage.
- Ensure the operating environment remains within specified conditions (temperature, humidity).

8. TROUBLESHOOTING

- **No Display / Meter Not Powering On:**
 - Check the power supply to the circuit.
 - Verify all wiring connections are secure and correct according to the diagrams.
- **Incorrect Readings:**
 - Ensure the meter is correctly wired for the load. Incorrect wiring can lead to inaccurate measurements.
 - Confirm the voltage and current are within the meter's specified range (e.g., 220V AC, max 80A).
- **Temporary kWh Not Resetting:**
 - Ensure you are holding the reset button for the full 6 seconds.
 - Note that the total kWh cannot be reset.
- **Pulse LED Not Flashing:**
 - Verify there is an active load connected and drawing power through the meter.
 - Check wiring for proper current flow.

9. WARRANTY AND SUPPORT

For warranty information or technical support, please refer to the product packaging or contact your retailer. Keep your purchase receipt as proof of purchase.