

OREiN OL27003

OREiN 3CCT Motion Sensor Outdoor Lights

Model: OL27003

User Instruction Manual

PRODUCT OVERVIEW

The OREiN 3CCT Motion Sensor Outdoor Lights are high-performance LED security lights designed for outdoor use. Featuring adjustable color temperature (3CCT), multiple lighting modes, and a wide-angle motion sensor, these lights provide efficient and customizable illumination for your garage, yard, and other outdoor areas. They are built with durable, IP65 waterproof materials to ensure long-lasting performance.



Image: OREiN 3CCT Motion Sensor Outdoor Lights showcasing adjustable color temperatures.

Key Features

- **3-in-1 Color Temperature (3CCT):** Easily switch between 2700K (Warm Light), 4000K (Natural White Light), and 6500K (Cold White Light) to suit your preference.
- **Super Bright & Anti-glare:** Equipped with 122 high-end LED lamp beads, providing 3500 lumens of bright, even light over an area of 3500 sq.ft.
- **3 Lighting Modes:**
 - **Manual Mode:** Turned on/off by a manual switch.
 - **Security Mode:** Activated by motion with adjustable time and distance.
 - **Dimmable Dusk to Dawn Mode:** Automatically turns on at dusk with 30% brightness, increases to 100% brightness upon detecting motion, and turns off at dawn.
- **180° Adjustable Motion Sensor:** Detects motion up to 40ft away with adjustable sensing distance and time.
- **IP65 Waterproof & Durable:** Constructed from aluminum and polycarbonate for excellent heat dissipation, anti-UV, anti-breakage, and resistance to heat/cold.

- **Easy Installation:** Hardwired connection designed for mounting to a junction box.

SETUP AND INSTALLATION

Before beginning installation, ensure the power supply is turned off at the circuit breaker to prevent electrical shock.

Included Components:

- Motion Sensor Outdoor Lights x 2
- Wire Nuts x 4
- Gasket x 2
- Machine Screw (M4x12) x 6
- Machine Screw (M4x20) x 6
- Manual

Installation Steps:

1. **Fix the panel on a junction box:** Secure the mounting plate to a standard junction box using the provided screws.
2. **Connect the wires of the same color:** Connect the live, neutral, and ground wires from the light fixture to the corresponding wires from your electrical supply using wire nuts.
3. **Secure the wire connection with the nuts:** Ensure all wire connections are tight and secure.
4. **Secure the lamp with the screws:** Attach the light fixture to the mounting plate and secure it with the remaining screws.



Image: Easy 4-step installation guide.

The light can be mounted under the soffit or on a wall. Ensure the mounting surface is suitable for hardwired electrical connections.

Hardwired, Not Battery, Not Solar or Plug in

1. Need Install on a Junction Box
2. Junction Box is Not Included

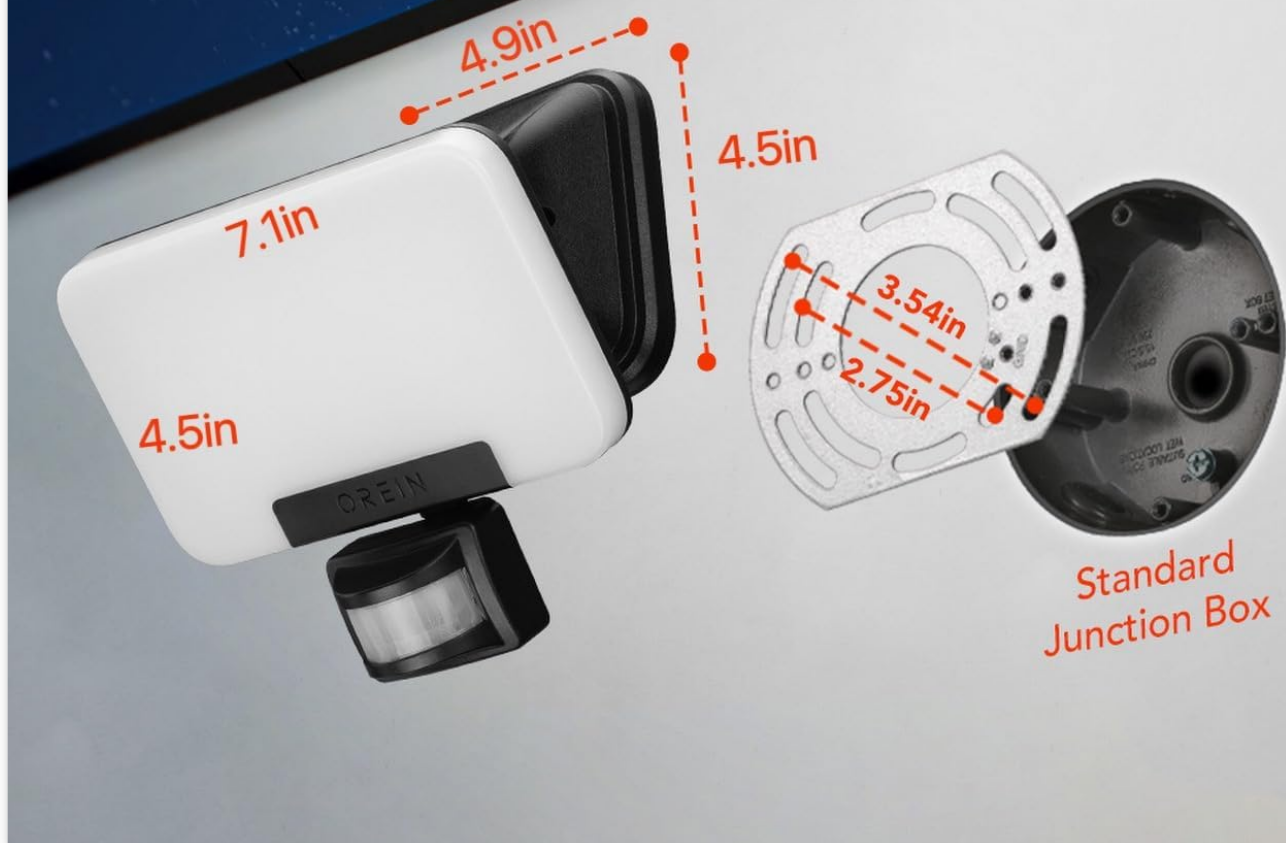


Image: Product dimensions and hardwired installation details.

OPERATING INSTRUCTIONS

Adjusting Color Temperature (3CCT)

The OREiN floodlight allows you to select from three color temperatures: 2700K (Warm Light), 4000K (Natural White Light), and 6500K (Cold White Light). Refer to the physical switch or control mechanism on the light fixture to make your selection.

Warm to Cold Adjustable Light

2700K

Warm Light



4000K

Natural White Light



6500K

Cold White Light



Image: Visual representation of 2700K, 4000K, and 6500K light outputs.

Lighting Modes

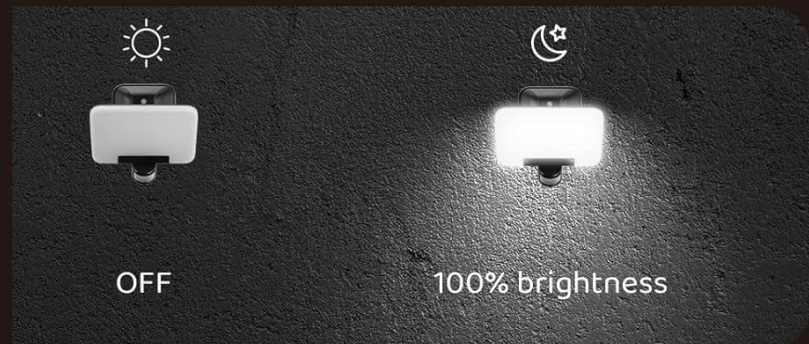
The light offers three distinct operating modes:

- **Manual Mode:** The light functions like a standard outdoor light, controlled by an external wall switch. It will remain on or off based on the switch position.
- **Security Mode:** The light remains off until motion is detected within its sensing range. Upon detection, it illuminates at 100% brightness for a set duration, then turns off.
- **Dimmable Dusk to Dawn Mode (D2D):** The light automatically turns on at dusk with 30% brightness. When motion is detected, it brightens to 100% and then returns to 30% brightness after the motion ceases and the set time expires. It turns off automatically at dawn. *Note: For daytime lighting to be prevented, the LUX setting must be at the minimum position (20 LUX).*


| 3 Light Modes



**MANUAL
OVERRIDE
Mode**
Manual to Open



**SECURITY
Mode**
Auto to Open



D2D Mode
Auto to Open



Image: Explanation of the three lighting modes.

Motion Sensor Adjustment

The 180° adjustable motion sensor allows you to customize its sensitivity and duration. The sensor has knobs for adjusting TIME, SENS (sensitivity), and LUX (light level for activation).

- **TIME:** Adjusts how long the light stays on after motion is detected (e.g., from 10 seconds to 8 minutes).
- **SENS (Sensitivity):** Controls the detection range of the motion sensor (up to 40ft maximum).
- **LUX:** Determines the ambient light level at which the sensor becomes active. Set to 'Min' (20 LUX) for dusk-to-dawn operation, or 'Max' (2000 LUX) for activation in brighter conditions.

Motion Activated

Hardwired, Not Solar



Image: Motion sensor activation and adjustment knobs.

Video: This video demonstrates the OREiN Outdoor Motion Sensor Flood Light's features, including its adjustable color temperature, dusk-to-dawn functionality, and motion-activated security mode. It shows the light activating when a person approaches and highlights its IP65 waterproof rating and efficient LED output.

MAINTENANCE

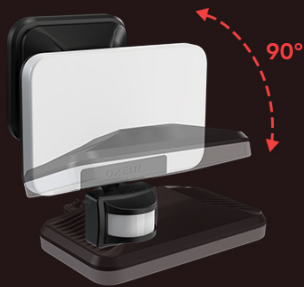
The OREiN 3CCT Motion Sensor Outdoor Lights are designed for durability and minimal maintenance. The IP65 waterproof rating ensures protection against dust and water jets, making them suitable for various weather conditions.

- **Cleaning:** Periodically wipe the light fixture with a soft, damp cloth to remove dirt and debris. Avoid using abrasive cleaners or solvents that could damage the finish or electronic components.
- **Inspection:** Regularly check the mounting and wiring for any signs of wear, damage, or loose connections. Ensure the motion sensor lens is clean and unobstructed for optimal performance.
- **Longevity:** The LED lamp beads are designed for a long lifespan of approximately 50,000 hours, reducing the need for frequent bulb replacement.

Flexible Adjustment for Lamp & Sensor



Light left and right



Light up and down



Sensor up and down



Sensor left and right

Image: IP65 Waterproof feature demonstration.

TROUBLESHOOTING

Problem	Possible Cause	Solution
Light does not turn on.	No power; incorrect wiring; sensor setting (LUX too high); external switch off.	Check circuit breaker; verify wiring connections; adjust LUX setting to 'Min' for dusk-to-dawn or lower for security mode; ensure external switch is on.
Light stays on constantly.	Sensor setting (TIME too long or SENS too high); continuous motion in detection area; D2D mode active.	Adjust TIME and SENS knobs; ensure no constant motion (e.g., tree branches) in sensor's view; verify if D2D mode is desired.
Light flashes or flickers.	Loose wiring; unstable power supply; faulty unit.	Check all wiring connections; consult an electrician for power supply issues; contact customer support if problem persists.
Motion sensor not detecting.	Sensor obstructed; SENS setting too low; LUX setting too high; incorrect sensor angle.	Clear obstructions from sensor lens; increase SENS setting; lower LUX setting; adjust sensor angle for optimal coverage.

If the sensing parameters are not suitable, try adjusting the knobs on the sensor first. For persistent issues not covered here, please contact customer support.

PRODUCT SPECIFICATIONS

Specification	Detail
Brand	OREiN
Model Name	OL27003
Power Source	Hardwired Electric

Specification	Detail
Wattage	35 watts
Brightness	3500 Lumen
Color Temperature	2700K/4000K/6500K (3CCT)
Voltage	120 Volts
Material	Aluminum, Polycarbonate
Water Resistance Level	IP65 Waterproof
Motion Sensor Angle	180°
Max Sensing Distance	40ft
Product Dimensions	7"L x 4.5"W x 3.5"H
Item Weight	2.2 Pounds
Certifications	CE, FCC, RoHS
Number of Light Sources	122 LED lamp beads

WARRANTY INFORMATION

OREiN products, including the 3CCT Motion Sensor Outdoor Lights, come with a **12-month warranty** from the date of purchase. This warranty covers defects in materials and workmanship under normal use. Please retain your proof of purchase for warranty claims.

For any questions or issues during the warranty period, please contact our customer support team. We are committed to providing prompt assistance.

CUSTOMER SUPPORT

For technical assistance, troubleshooting, or any inquiries regarding your OREiN 3CCT Motion Sensor Outdoor Lights, please do not hesitate to contact us.

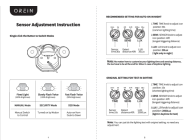


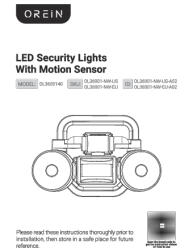

Customer Service Hotline: 1 (844) 506-1530

Our support team is available to serve you within 24 hours.



Image: OREiN Customer Service Contact Information.

Related Documents - OL27003

	<p>OREiN Sensor Adjustment Instructions</p> <p>A guide to adjusting the settings for OREIN motion sensor outdoor lights, covering TIME, SENS, and LUX adjustments for various lighting modes.</p>
	<p>OREiN Motion Sensor Security Light Outdoor User Manual</p> <p>User manual for the OREiN Motion Sensor Security Light Outdoor, model OL27001-DW-EU. Features 24W LED floodlight, adjustable white light, IP65 waterproofing, PIR motion detection, and dusk-to-dawn functionality.</p>
	<p>Orein LED Area Light Use and Care Guide</p> <p>Comprehensive use and care guide for the Orein LED Area Light, model SLFAL01LM416001. Includes safety information, troubleshooting, warranty details, specifications, installation instructions for various mounting options, photocell details, and cleaning recommendations.</p>
	<p>OREIN LED Security Lights with Motion Sensor: Installation and Operation Guide</p> <p>Detailed installation, setup, and troubleshooting guide for the OREIN LED Security Lights with Motion Sensor (Model OL3600140). Learn about sensor settings, operating modes, and product specifications.</p>
	<p>OREiN Smart Motion Sensor Outdoor Lights OL36002440 Installation and User Manual</p> <p>Comprehensive guide for installing and operating the OREiN Smart Motion Sensor Outdoor Lights, Model OL36002440. Includes setup, sensor adjustments, modes, troubleshooting, and app connection instructions.</p>

OREIN

Outdoor Smart Flood Light
With Motion Sensor

MODEL: OL27002546



Please read these instructions thoroughly prior to installation, then store in a safe place for future reference.
For the APP control instructions, please refer to page 11-12.



[OREIN Outdoor Smart Flood Light With Motion Sensor OL27002546 User Manual](#)

User manual for the OREIN Outdoor Smart Flood Light with Motion Sensor (Model OL27002546).

Includes installation guide, sensor settings, modes description, troubleshooting, product specifications, and app connection instructions.