



[Manuals.plus](#) /

› [PawHut](#) /

› PawHut Cat Litter Box User Manual

PawHut D31-066V00WT

PawHut Cat Litter Box User Manual

Model: D31-066V00WT

Brand: PawHut



1. PRODUCT OVERVIEW

This manual provides instructions for the PawHut Cat Litter Box, a covered litter solution designed for privacy, odor control, and easy cleaning. It features a high-sided tray, a two-way entrance, and a foldable design for convenience.



Image 1.1: The PawHut Cat Litter Box in gray and white, showing its enclosed design and integrated scoop holder.

2. KEY FEATURES

- **Private Space:** The enclosed design provides a secure environment for your cat, promoting easier use. It includes a lid for odor containment and an integrated air freshener for pleasant air quality.
- **Foldable Tray:** The portable and foldable design allows for space-saving storage and easy relocation.
- **Easy to Clean:** The lid lifts for convenient access to the interior. A high-edge design helps contain litter within the tray, preventing spills. An included scoop attaches to the side for tidy storage.
- **Easy Access:** A large front door facilitates entry and exit for your cat. A grate near the entrance helps remove litter from paws, reducing tracking outside the box.

ODOR REDUCTION

Deodorant Filter Slot
Deodorant



Image 2.1: Detail of the odor reduction system with a deodorant filter slot, designed to keep the air pleasant.

ORGANISED

It provides a
hygienic living area



--- High Rim prevents
cat litter splashing

--- Scoop for
simple cleaning

Image 2.2: Illustration of the high rim design to prevent litter splashing and the included scoop for simple cleaning.

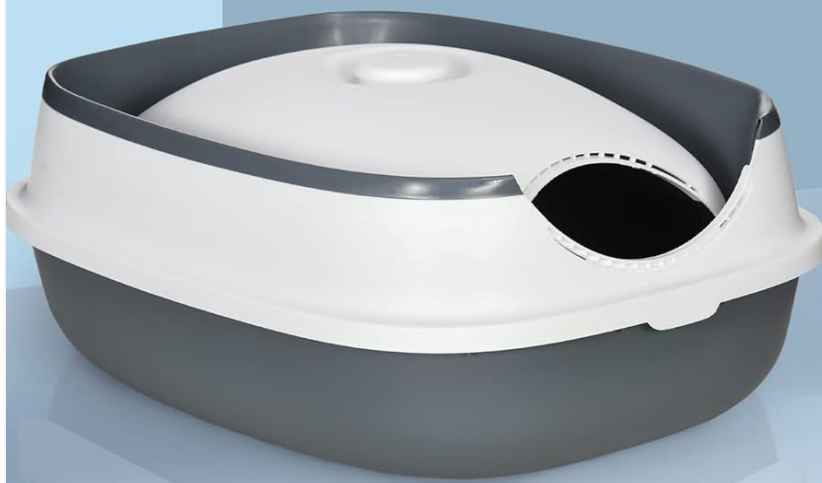
CLOSED CAT LITTER BOX

- Stay private during potty time
- Prevents odour from spreading out



Image 2.3: The enclosed design of the litter box, providing privacy and helping to contain odors.

FOLDABLE DESIGN



Space-saving and easy to transport

Image 2.4: The litter box in its folded state, demonstrating its space-saving and transportable design.

3. COMPONENTS

The PawHut Cat Litter Box includes the following components:

- Main Litter Box Base
- Lid with integrated air freshener slot
- Front entrance door
- Litter scoop

4. SETUP INSTRUCTIONS

1. **Unfold the Unit:** If the litter box is in its folded state, gently unfold the top section until it securely locks into place with the base.
2. **Place Litter:** Fill the base of the litter box with your preferred cat litter. Ensure the litter level is appropriate for your

cat and does not exceed the recommended fill line (if indicated).

3. **Install Air Freshener (Optional):** If using an air freshener, place it into the designated slot on the lid.
4. **Attach Scoop:** Secure the included litter scoop to the side of the litter box using the integrated holder.
5. **Positioning:** Place the litter box in a quiet, accessible location preferred by your cat.



Image 4.1: A cat entering the PawHut litter box, demonstrating the easy access design.

5. OPERATING INSTRUCTIONS

The PawHut Cat Litter Box is designed for intuitive use by your feline companion. Cats can enter and exit through the large front door. The internal grate helps to remove litter from their paws as they exit, minimizing tracking.

Your browser does not support the video tag.

Video 5.1: An official PawHut video demonstrating the features and design of the cat litter box, including its enclosed nature and ease of use for cats.

6. MAINTENANCE AND CLEANING

Regular cleaning is essential for hygiene and to prolong the life of your litter box.

- Daily Scooping:** Lift the lid to access the litter tray. Use the provided scoop to remove solid waste and clumps daily.
- Litter Replacement:** Depending on the type of litter and number of cats, replace all litter and thoroughly clean the box weekly or bi-weekly.
- Deep Cleaning:**
 - Empty all old litter.
 - Wash the base and lid with mild soap and water. Avoid harsh chemicals that could be harmful to your cat or damage the plastic.
 - Rinse thoroughly to remove all soap residue.
 - Allow all parts to air dry completely before refilling with fresh litter.
- Air Freshener Maintenance:** Replace the air freshener as needed to maintain odor control.

7. TROUBLESHOOTING

Problem	Possible Cause	Solution
Litter tracking outside the box	Cat not using the grate sufficiently; type of litter used.	Ensure the grate is clear. Consider using a low-tracking litter type. Place a litter mat outside the entrance.
Odor persists	Infrequent cleaning; air freshener needs replacement; insufficient litter.	Increase frequency of scooping and full litter changes. Replace the air freshener. Ensure adequate litter depth.
Difficulty cleaning / removing waste	Litter sticking to the bottom; lid not fully open.	Ensure the lid is fully lifted for maximum access. Use a non-stick spray on the bottom of the tray (ensure it's pet-safe). Consider a different litter type.
Cat reluctant to use the box	New environment; small entrance for larger cats; previous negative experience.	Allow time for adjustment. Ensure the box is in a quiet, private location. Some cats may prefer an open box if the enclosed space is too restrictive. Ensure the box is clean.

8. SPECIFICATIONS

Attribute	Detail
Model Number	D31-066V00WT
Dimensions (L x W x H)	20.5" L x 16.25" W x 15" H
Folded Dimensions (L x W x H)	20.5" L x 16.25" W x 5.75" H
Front Door Diameter	Φ7.75"
Material	Polypropylene (PP), Acrylonitrile Butadiene Styrene (ABS)

Attribute	Detail
Color	Gray and White
Item Weight	3.65 pounds (approx. 1.65 kg)
Suitable for Cats Up To	10 lbs (approx. 4.5 kg)
Included Components	Scoop



Image 8.1: Detailed dimensions of the PawHut Cat Litter Box, including height, width, length, and entrance diameter.

9. SAFETY INFORMATION

- Keep out of reach of small children.
- Do not use abrasive cleaners or solvents on the litter box.

- Ensure the litter box is placed on a stable, level surface.
- Regularly inspect the litter box for any damage or wear. Discontinue use if damaged.
- This product is intended for indoor use only.

10. WARRANTY AND SUPPORT

For warranty information, product support, or to purchase replacement parts, please contact PawHut customer service or visit the official PawHut website. Please have your model number (D31-066V00WT) and purchase date available when contacting support.

Manufacturer: Aosom LLC

Date First Available: June 18, 2023

