

RUIMEN D1

RUIMEN Smart Watch D1 User Manual

Model: D1

INTRODUCTION

This manual provides detailed instructions for the RUIMEN Smart Watch D1. Please read this manual carefully before using the device to ensure proper operation and to maximize its features. Keep this manual for future reference.

WHAT'S IN THE BOX

- RUIMEN Smart Watch D1 (Purple)
- USB Charging Cable
- User Manual

PRODUCT OVERVIEW

The RUIMEN Smart Watch D1 features a 1.85-inch HD full touch screen and is designed for both men and women. It offers comprehensive health and fitness tracking capabilities, along with smart communication features.



Figure 1: Front view of the RUI MEN Smart Watch D1, highlighting its large HD display.

Key Features:

- 1.85-inch HD Full Touch Screen
- Bluetooth 5.2 for stable connection
- IP68 Waterproof rating
- Make/Answer Calls directly from the watch
- Smart Notifications (calls, texts, social media)
- Heart Rate Monitor
- Blood Oxygen Monitor
- Sleep Tracker
- 100+ Sports Modes
- Customizable Watch Faces
- Additional functions: Stopwatch, Timer, Calculator, Alarm Clocks, Voice Assistant, Music Control, Female Cycle

SETUP

1. Charging the Device:

Before first use, fully charge your smart watch. Connect the provided USB charging cable to the magnetic charging points on the back of the watch and to a USB power source. The watch screen will indicate charging status.

2. App Installation and Connection:

To unlock the full potential of your RUIMEN Smart Watch D1, you need to download and connect it to the companion app.

1. **Download the App:** Scan the QR code in the watch's manual or search for "GloryFit" in your phone's app store (compatible with iOS 9.0+/Android 5.0+ and Bluetooth 5.0 or above).
2. **Enable Bluetooth:** Ensure Bluetooth is enabled on your smartphone.
3. **Pair the Device:** Open the GloryFit app, navigate to the "Device" section, and select "Add a new device". The app will search for nearby devices. Select "D1" from the list to bind. Confirm pairing on both your phone and the watch if prompted.

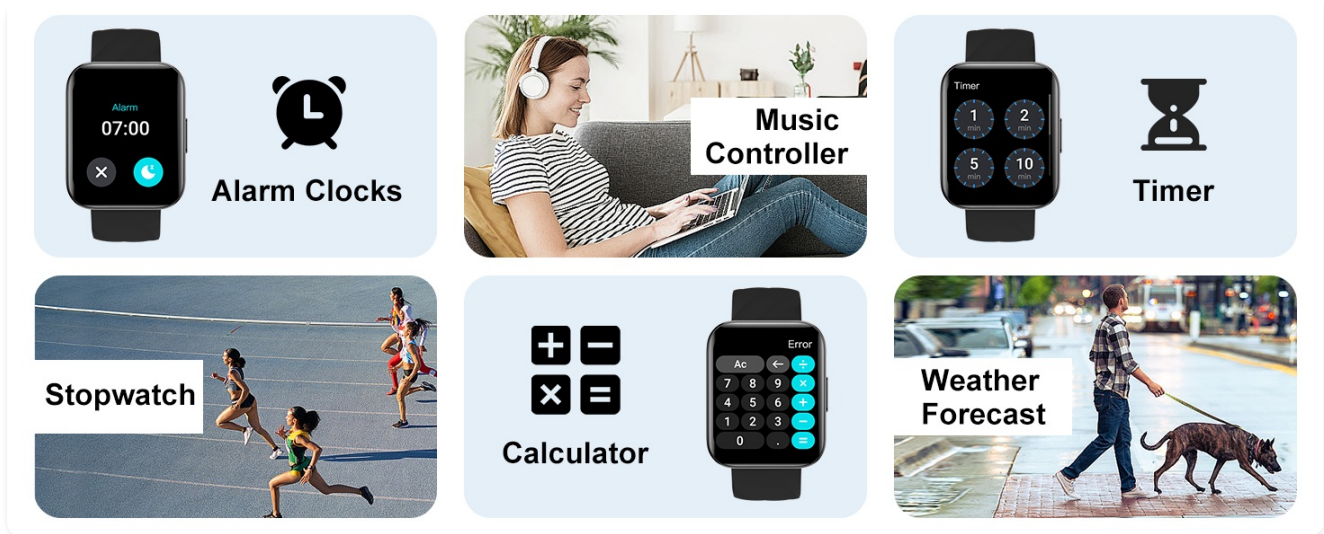


Figure 2: Visual guide for connecting the watch to your smartphone and enabling Bluetooth calling.

3. Activating Bluetooth Calling Function:

After successfully connecting the watch to the app:

1. **Turn on Phone's Bluetooth Setting:** Go to your phone's Bluetooth settings.
2. **Find and Connect "D1":** Locate "D1" in the list of available devices and tap to connect.
3. **Confirm Connection:** Once connected, the call icon on your watch will light up, indicating the calling function is active. You can now make and answer calls directly from your watch.

OPERATING INSTRUCTIONS

Navigation:

- **Swipe Up/Down:** Scroll through menus and notifications.
- **Swipe Left/Right:** Access quick functions or different data screens.
- **Tap:** Select an item or confirm an action.
- **Side Button:** Press to return to the home screen or wake the device.

Making/Answering Calls:

Once the Bluetooth calling function is activated, you can manage calls directly from your wrist.

- **Answering Calls:** When an incoming call is received, the watch will display the caller ID. Tap the green phone icon to answer.
- **Making Calls:** Access the dial pad, contacts, or call logs on your watch to initiate a call.

Notification



Bluetooth calls

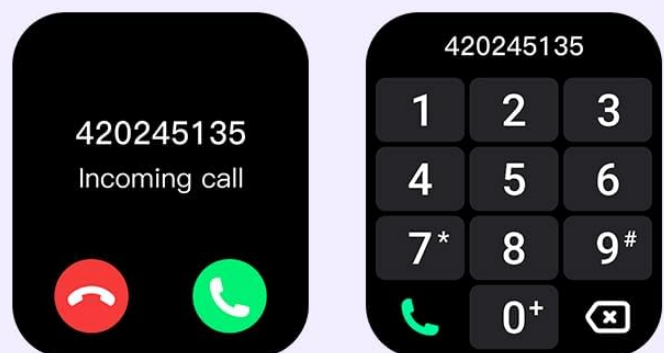


Figure 3: The watch's interface for managing calls and receiving notifications.

Smart Notifications:

Receive real-time alerts for calls, text messages, and social media notifications directly on your watch. The watch will vibrate to notify you.

- Ensure notification permissions are enabled for the GloryFit app in your phone's settings.
- The watch displays incoming messages but does not support replying directly.

Health Tracking:

The D1 Smart Watch provides comprehensive health monitoring features.

- **Heart Rate Monitoring:** Automatically records your real-time heart rate throughout the day.
- **Blood Oxygen Monitoring:** Measures your blood oxygen levels.
- **Sleep Tracking:** Monitors your sleep patterns, including deep sleep, light sleep, and awake times, to help you understand and improve sleep quality.



Figure 4: Heart rate and blood oxygen monitoring on the smartwatch.

Sleep Tracker



Figure 5: Sleep tracking interface showing sleep duration and quality.

Activity Tracking & Sports Modes:

The watch automatically tracks daily steps, distance, and calories burned. It supports over 100 sports modes to cater to various activities.

- Select your desired sport mode from the watch menu to track specific activity data.
- Review your activity data in the GloryFit app for detailed insights and historical records.

Activity Tracking

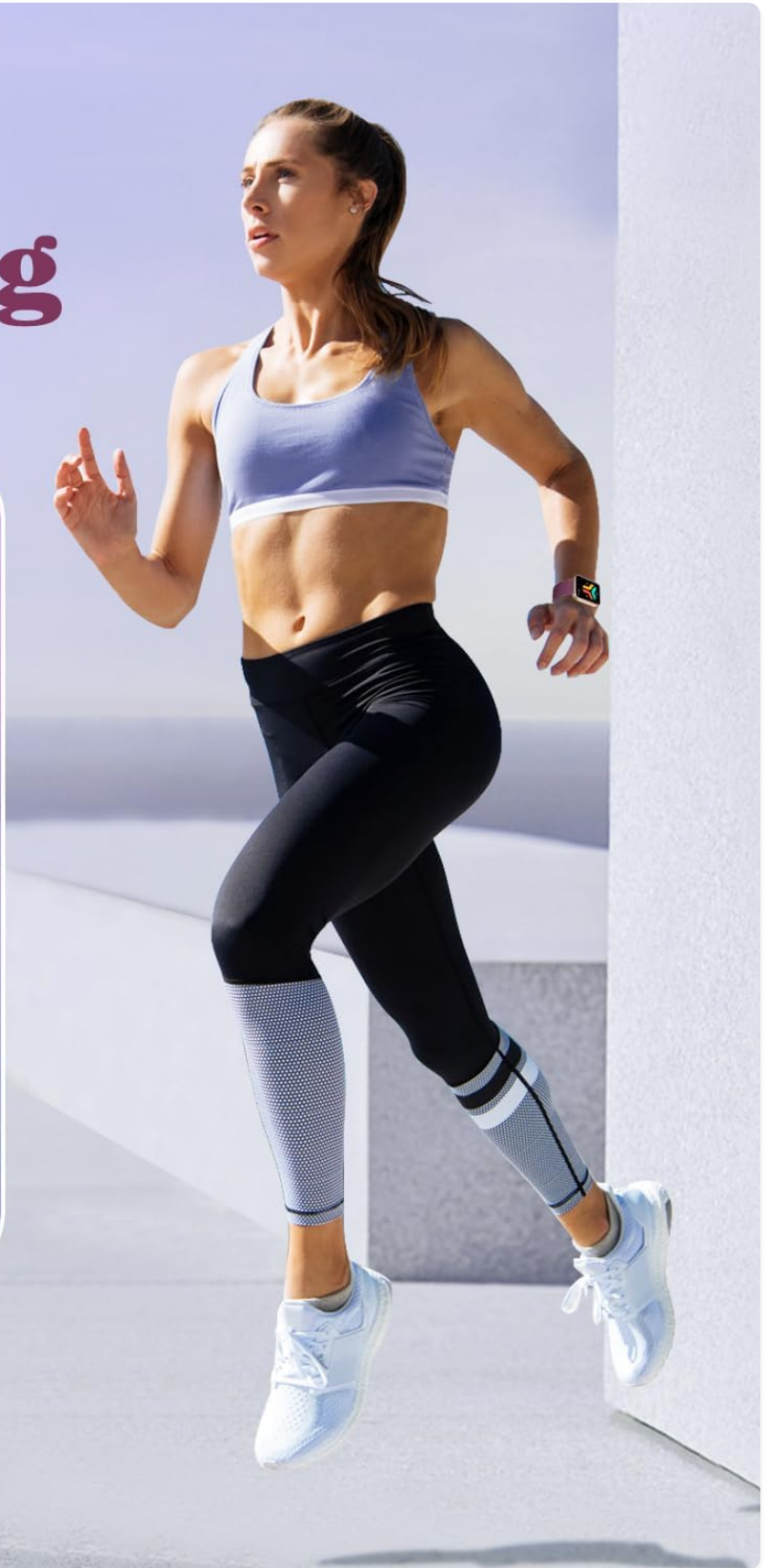
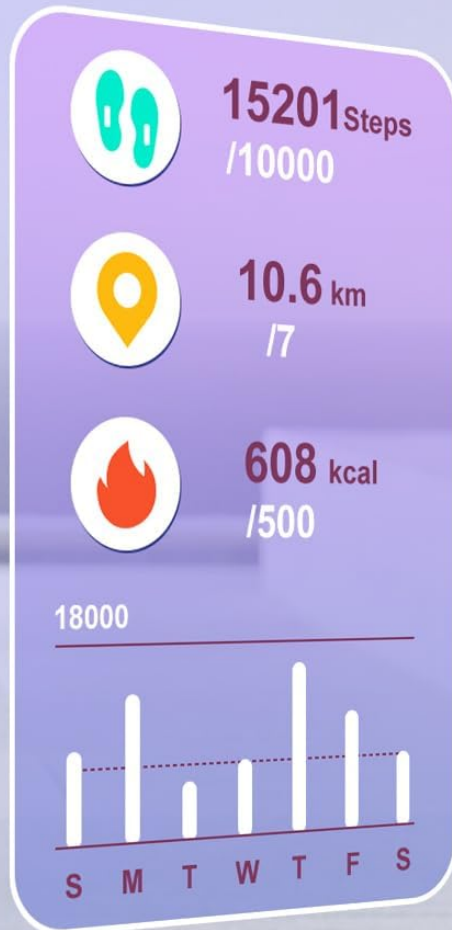


Figure 6: Activity tracking display showing daily steps, distance, and calories.

100+ Sport Modes



Figure 7: Selection of over 100 sports modes available on the watch.

Customizing Watch Faces:

Personalize your watch with over 100 pre-designed watch faces or create your own using your favorite photos through the GloryFit app.

Customized Watch Face



Figure 8: Examples of customizable watch faces and the option to use personal photos.

Other Useful Functions:

- **Stopwatch & Timer:** For precise time measurement.
- **Calculator:** Perform basic calculations on the go.
- **Alarm Clocks:** Set multiple alarms for daily reminders.
- **Voice Assistant:** Control your phone's voice assistant directly from the watch.
- **Music Control:** Play, pause, skip tracks, and adjust volume for music playing on your phone.
- **Female Cycle Tracking:** Monitor and predict menstrual cycles.

- **Weather Forecast:** Get real-time weather updates.

MAINTENANCE

Water Resistance (IP68):

The RUIMEN Smart Watch D1 is IP68 waterproof, meaning it is resistant to dust and can withstand immersion in water up to 1.5 meters for 30 minutes. You can wear it while washing hands, running in the rain, or swimming in a pool or at a shallow beach. However, it is not suitable for hot showers, saunas, or diving, as steam and hot water can damage the seals.



Figure 9: The smartwatch is IP68 waterproof, suitable for daily water exposure.

Cleaning and Care:

- Regularly clean the watch and strap with a soft, dry cloth.
- If the watch gets wet, wipe it dry thoroughly before charging or prolonged use.
- Avoid exposing the watch to extreme temperatures or harsh chemicals.

Replacing the Band:

The watch band is replaceable and uses a standard 22mm width. You can purchase different colored bands to customize your watch's appearance.

How to connect the watch to your phone?

Compatible with iOS 9.0/Android 5.0 and Bluetooth 5.0 or above

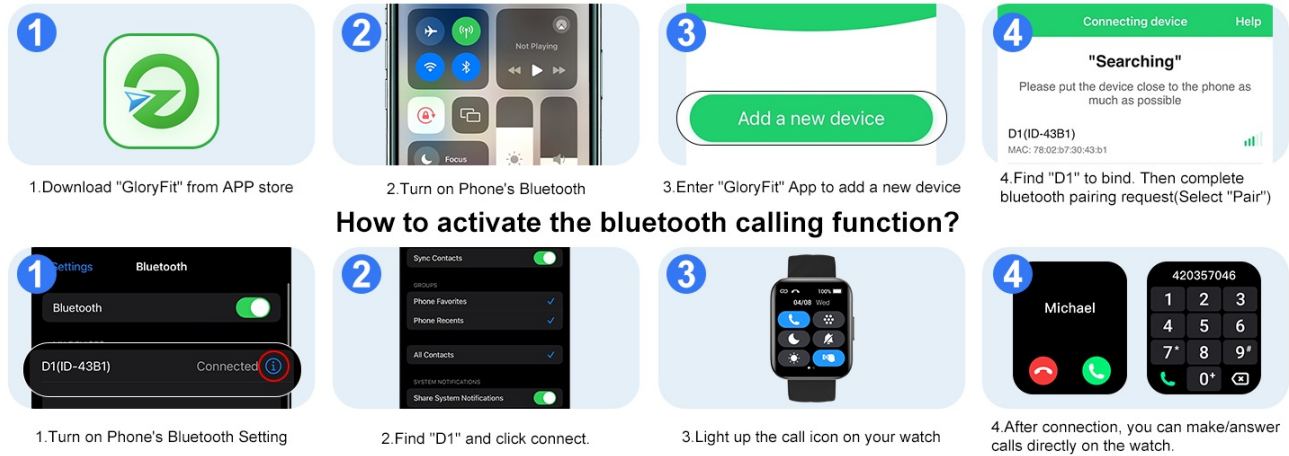


Figure 10: The watch supports standard 22mm replaceable bands for customization.

TROUBLESHOOTING

Problem	Possible Cause / Solution
Watch not turning on	Battery might be depleted. Charge the watch for at least 2 hours.
Cannot connect to phone via Bluetooth	Ensure Bluetooth is enabled on both devices. Make sure the watch is within range of the phone. Restart both the watch and the phone. Forget the device in your phone's Bluetooth settings and try pairing again through the GloryFit app.
No notifications received	Check if notification permissions are granted for the GloryFit app in your phone's settings. Ensure the watch is connected to the phone. Verify that the specific app notifications are enabled within the GloryFit app.
Inaccurate health data	Ensure the watch is worn snugly but comfortably on your wrist. Avoid excessive movement during measurements. Clean the sensor on the back of the watch.
Short battery life	Frequent screen activation, continuous heart rate monitoring, and extensive use of Bluetooth calling can drain the battery faster. Adjust settings in the app to optimize battery usage.

SPECIFICATIONS

Feature	Detail
Model Number	D1
Screen Size	1.85 Inches
Display Resolution	320 x 386 pixels
Connectivity	Bluetooth 5.2
Compatibility	iOS 9.0+ & Android 5.0+
Waterproof Rating	IP68
Battery Type	Lithium Polymer
Normal Use Battery Life	Up to 5 days (approx.)
Standby Battery Life	Up to 30 days (approx.)
Charging Time	Approx. 2 hours
Product Dimensions	1.46 x 9.84 x 0.04 inches
Item Weight	1.43 ounces (40.5 grams)
Memory Storage Capacity	128 MB

Size



2Hrs

Charging

5Days

Normal use

30Days

Standby

Figure 11: Smartwatch dimensions and battery life estimates.

WARRANTY AND SUPPORT

The RUIMEN Smart Watch D1 comes with a 1-year warranty. For technical support or warranty claims, please contact RUIMEN customer service. Details can typically be found on the product packaging or the official RUIMEN website.

RUIMEN is committed to providing 24/7 customer support and lifetime technical support for its products.