

**AKAMATE B0C8CGGHBW**

# AKAMATE Portable 7-Inch QLED Car Stereo User Manual

Model: Apple CarPlay Portable Car Stereo (B0C8CGGHBW)

## 1. INTRODUCTION

Thank you for choosing the AKAMATE Portable 7-Inch QLED Touch Screen Car Stereo. This device is designed to enhance your driving experience by providing seamless integration with your smartphone via Wireless Apple CarPlay and Android Auto. Enjoy features such as GPS navigation, music streaming, hands-free calling, and voice commands on a vibrant QLED display. This manual provides detailed instructions for setup, operation, and maintenance to ensure optimal performance and longevity of your device.



Figure 1: AKAMATE Portable 7-Inch QLED Car Stereo. This image displays the main unit of the portable car stereo with its 7-inch QLED touchscreen, showing a typical smartphone interface with app icons for phone, music, maps, and messages. A suction cup mount is visible at the bottom, and a steering wheel control remote is shown in the bottom right corner.

## 2. WHAT'S IN THE BOX

Please verify that all the following components are included in your package:

- Portable Car Screen
- Suction Cup Holder & Suction Cup Mount Base
- Cigarette Lighter Power Cable & Sunshade Cover
- AUX Cable & Backup Camera Input Cable
- User Manual (this document)

# WHAT YOU GET



Figure 2: Package Contents. This image illustrates all the items included in the product box: the portable car screen, suction cup holder, cigarette lighter power cable, sunshade cover, AUX cable, backup camera input cable, and the user manual. Dimensions of the main unit are also indicated.

## 3. SETUP AND INSTALLATION

The AKAMATE Portable Car Stereo is designed for easy plug-and-play installation. Follow these steps to set up your device:

- 1. Choose Mounting Location:** Decide whether to mount the unit on your dashboard or windshield. The suction cup mount allows for flexible positioning.
- 2. Attach Mount to Unit:** Align the four holes on the back of the portable car screen with the corresponding pegs on the suction cup holder. Gently push until it clicks into place.
- 3. Secure Mount:**
  - For Windshield: Press the suction cup firmly against the clean windshield surface and engage the locking lever to create a strong vacuum seal.
  - For Dashboard: Use the self-adhesive bracket (if included, or a separate adhesive pad) to secure the mount to a flat, clean area of your dashboard.

4. **Connect Power:** Insert the cigarette lighter power cable into your vehicle's 12V/24V cigarette lighter socket. Connect the other end to the "Power Supply Input" port on the side of the portable car screen.
5. **Initial Power On:** The device should power on automatically once connected to power. Follow any on-screen prompts for initial setup.

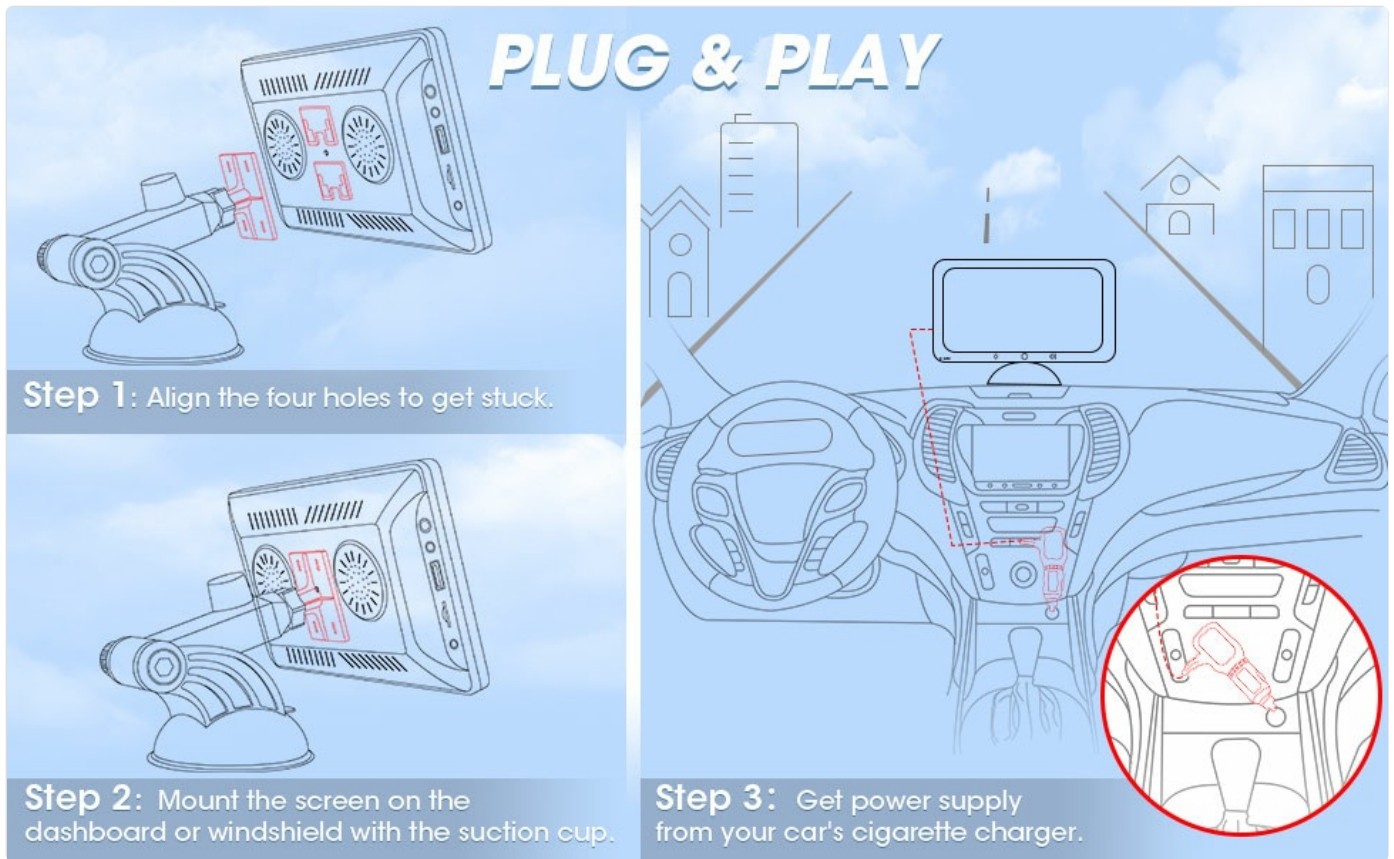


Figure 3: Mounting Options. This diagram illustrates two common mounting methods: dashboard mounted and windshield mounted, both utilizing the strong suction cup holder for secure placement.



Figure 4: Plug & Play Installation. This image provides a visual guide for the simple three-step installation process: aligning the unit with the mount, securing the mount to the dashboard or windshield, and connecting the power cable to the car's cigarette lighter.

## 4. OPERATING INSTRUCTIONS

### 4.1. Wireless CarPlay / Android Auto Connection

Connect your smartphone wirelessly to access navigation, music, calls, and more.

1. Ensure your phone's Bluetooth and Wi-Fi are enabled.
2. On the car stereo, go to the "CarPlay" or "Android Auto" icon.
3. The device will search for available phones. Select your phone from the list.
4. Follow the on-screen prompts on both the car stereo and your phone to complete the pairing process. This may involve confirming a code.
5. Once connected, your phone's CarPlay or Android Auto interface will appear on the QLED screen.



# WIRELESS CONNECTION

Bluetooth and Wi-Fi connection let you enjoy wireless carplay, android auto and wireless mirrorlink, you can access GPS navigation, voice control, music, messages, video and more



Figure 5: Wireless Connection. This image demonstrates the wireless connectivity feature, showing a smartphone connected to the car stereo via Bluetooth and Wi-Fi for seamless Apple CarPlay and Android Auto integration, enabling access to GPS navigation, voice control, music, and messages.



Figure 6: Core Features. This image highlights the main functionalities of the device, including CarPlay, Android Auto, Mirrorlink, FM Transmission, Steering Wheel Control (SWC), and QLED Touchscreen.

## 4.2. Wireless Mirrorlink

The device supports wireless mirror-link for both iOS and Android phones, allowing you to display your phone's screen directly on the QLED display.

1. Select the "MirrorLink" icon on the main interface.
2. Follow the specific instructions displayed on the screen for iOS or Android devices to establish the connection.



### Wireless CarPlay and Android Auto

Apple CarPlay and Android Auto wirelessly connect your smartphone to the screen, voice control your key phone features: maps, music, messages, phone and more.

## UPGRADE YOUR OLD CARS



Car



RV



Truck

Figure 7: Wireless Mirrorlink. This image demonstrates the wireless mirrorlink function, where a smartphone's screen is mirrored onto the portable car stereo, allowing users to view content like videos directly on the larger display.



### 4.3. Steering Wheel Control

The included IR remote with 5 buttons and a rotary knob can be attached to your steering wheel for convenient control of the unit.

- **Volume Control:** Use the rotary knob to adjust volume up or down.
- **Track Control:** Use the skip forward/backward buttons to change music tracks.
- **Call Management:** Answer or hang up calls using the dedicated buttons.
- **Mute/Play/Pause:** Control audio playback with the central button.



Figure 8: Wireless Steering Wheel Control. This image shows the smart car steering wheel remote, designed for safe and convenient control of the screen's functions, including call management and music navigation, without taking hands off the wheel.



Figure 9: Steering Wheel Control for Calls. This image illustrates how the steering wheel remote can be used to manage phone calls and music playback, providing a safe and convenient way to interact with the car stereo.

#### 4.4. Audio Output Options (Bluetooth 5.0, AUX, FM Transmission)

The device offers multiple ways to output audio to your car's stereo system:

- **Built-in Speaker:** For basic audio output directly from the unit.
- **Bluetooth 5.0:** Connect to your car's Bluetooth system for high-quality audio streaming and hands-free calling.
- **AUX Output:** Connect the portable dash screen to your car's head unit using the provided 3.5mm audio cable for a direct wired connection.
- **FM Transmission:** Set the portable car screen and your car's head unit to the same FM frequency to transmit audio wirelessly. This is ideal for vehicles without AUX or Bluetooth input.





Figure 10: FM & AUX Audio Output. This image shows the various audio output methods available: FM Transmitter, AUX-output, and the built-in speaker, allowing flexibility in how audio is played through your vehicle's sound system.



Figure 11: AUX and FM Transmission. This image highlights the AUX and FM transmission capabilities, providing alternative methods for audio output to your car's stereo system.

#### 4.5. QLED Touchscreen and Settings

The 7-inch QLED display offers a high-resolution (1024\*600) and responsive touch interface. Navigate through menus and settings by tapping and swiping.

- **System Settings:** Adjust general device settings, including language, time, and display options.
- **EQ Setting:** Customize audio equalization with the 16-band pre-set EQ to match your preferences.
- **Wallpaper:** Change the background image of the interface.
- **Brightness:** Adjust screen brightness for optimal visibility in various lighting conditions.



# 7 INCH QLED HD TOUCHSCREEN



Figure 12: QLED HD Touchscreen. This image compares the QLED display quality ("Ours") against a generic display ("Others"), emphasizing its 1024\*600 high resolution, 99% sRGB, HDR support, and responsive touchscreen for a superior viewing experience.





Figure 13: QLED Smart Display. This image highlights the QLED smart display, emphasizing its ability to deliver brighter, richer, and more lifelike colors for an enhanced viewing experience of movies, shows, and sports.

#### 4.6. Additional Features

- **USB Ports:** The power plug includes 2 USB ports for multi-device fast charging.
- **SD Card Slot & USB Flash Disk:** Supports digital multimedia playback (up to 128GB).
- **Backup Camera Input:** The portable car stereo supports input from a backup camera (camera not included).



Figure 14: Backup Camera Input. This image shows the portable car stereo displaying a backup camera feed, indicating its compatibility with external backup cameras (camera not included).

### 5. MAINTENANCE

To ensure the longevity and optimal performance of your AKAMATE Portable Car Stereo, follow these maintenance guidelines:

- **Cleaning:** Use a soft, dry cloth to clean the screen and exterior. Avoid abrasive cleaners or solvents that could damage the surface.
- **Temperature:** Do not expose the device to extreme temperatures (hot or cold) for extended periods, as this can affect internal components and battery life.
- **Storage:** If storing the device for a long time, disconnect it from power and store it in a cool, dry place.
- **Handling:** Handle the device with care. Avoid dropping it or subjecting it to strong impacts.
- **Power Connection:** Ensure the power cable is securely connected but do not force it. Disconnect by pulling the plug, not the cable.

## 6. TROUBLESHOOTING

If you encounter issues with your AKAMATE Portable Car Stereo, please refer to the following common problems and solutions:

Problem	Possible Cause	Solution
Device does not power on.	No power from cigarette lighter; loose connection.	Check if the cigarette lighter socket is working. Ensure the power cable is securely plugged into both the device and the car socket.
Touch screen malfunction.	Unit reset incorrectly.	Do not reset the unit unless instructed by support. If this occurs, contact customer support for assistance.
Cannot connect to CarPlay/Android Auto wirelessly.	Bluetooth/Wi-Fi off; incorrect pairing; interference.	Ensure Bluetooth and Wi-Fi are active on your phone. Forget the device in your phone's Bluetooth settings and re-pair. Try restarting both the phone and the car stereo.
No audio or poor audio quality.	Incorrect audio output setting; FM interference; loose AUX cable.	Check audio output settings (Bluetooth, AUX, FM). For FM: Ensure the car stereo and device are on the same, clear FM frequency. Adjust the power cord routing to minimize interference. For AUX: Ensure the AUX cable is fully inserted into both devices.
Steering wheel control not responding.	Remote battery low; remote not paired.	Check the remote's battery. Ensure the remote is properly paired with the unit according to the setup instructions.

For issues not listed here, please contact AKAMATE customer support.

## 7. SPECIFICATIONS

Feature	Detail
Product Dimensions	6.96 x 0.78 x 4.29 inches
Item Weight	1.7 pounds
Display Type	7-Inch QLED Touch Screen
Display Resolution	1024*600
Connectivity Technology	Wireless CarPlay, Android Auto, AirPlay, Autolink, Bluetooth 5.0, Wi-Fi, USB, AUX, FM
Power Supply	12V/24V Cigarette Lighter
Compatible Devices	Smartphone
Audio Output Mode	Stereo

Feature	Detail
SD Card/USB Flash Disk Support	Max 128GB
EQ Presets	16-Band

## 8. WARRANTY AND SUPPORT

AKAMATE products are designed for reliability and performance. For specific warranty details, please refer to the warranty card included in your product packaging or visit the official AKAMATE website.

### Customer Support

If you require further assistance, technical support, or have questions regarding your AKAMATE Portable Car Stereo, please contact our customer service team:

- **Online Support:** Visit the [AKAMATE Store on Amazon](#) for FAQs and contact options.
- **Email Support:** Refer to your product packaging or the official website for the dedicated support email address.

When contacting support, please have your product model number (B0C8CGGHBW) and purchase details ready.

© 2025 AKAMATE. All rights reserved.

Documents - AKAMATE – B0C8CGGHBW



### [Smart Navigation System Owner's Manual](#)

This manual provides comprehensive instructions for the Smart Navigation System, covering installation, features like Apple CarPlay and Android Auto, Bluetooth connectivity, media playback, and troubleshooting.

lang:en score:17 filesize: 3.01 M page\_count: 36 document date: 2023-10-31