

Yansoo Dual Dash Cam & 64GB Micro Memory Card

Yansoo Dual Dash Cam Front and Inside & 64GB Micro Memory Card User Manual

Model: Dual Dash Cam & 64GB Micro Memory Card

INTRODUCTION

This manual provides detailed instructions for the proper installation, operation, and maintenance of your Yansoo Dual Dash Cam Front and Inside, along with information regarding the Yansoo 64GB Micro Memory Card. Please read this manual thoroughly before using the product to ensure optimal performance and safety.

PACKAGE CONTENTS

- Yansoo Dual Dash Cam Front and Inside
- Yansoo 64GB Micro Memory Card
- Mounting accessories (e.g., suction cup mount)
- Power cable (e.g., car charger)
- User Manual (this document)

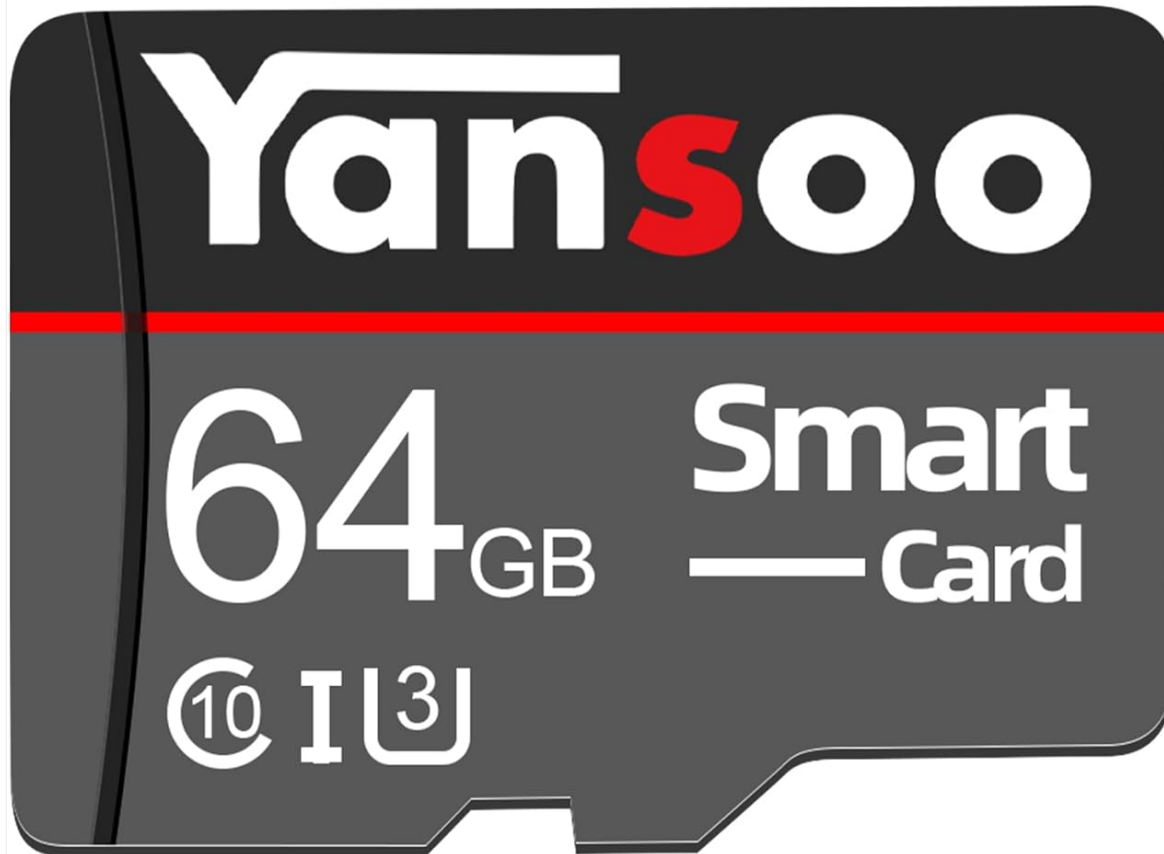


Image: The Yansoo Dual Dash Cam and 64GB Micro Memory Card as a complete bundle.

PRODUCT OVERVIEW

Yansoo Dual Dash Cam

The Yansoo Dual Dash Cam features a front-facing camera and an interior-facing camera, both recording in Full HD 1080P. It is designed to capture road events and cabin activity, providing comprehensive coverage for your vehicle. Key features include:

- Dual HD 1080P Recording (Front and Inside)
- F1.8 Large Aperture for clear vision in various lighting conditions
- Wide Angle Lenses: Front 170°, Cabin 140°
- Infrared Night Vision for the interior camera (4 IR LEDs)
- Emergency Lock Video (G-Sensor activated)
- Loop Recording
- 24 Hours Parking Monitor
- Motion Detection

- WDR (Wide Dynamic Range)



F1.8 LARGE APERTURE

Dashcam front and inside able to maintain a clear vision in many harsh environments



WDR



Dual HD1080P



Parking Monitor Loop Recording



Wide Angle



Motion Detection



4 IR LEDs



Emergency Lock

Image: Close-up view of the Yansoo Dual Dash Cam, showing the front lens, interior lens, and mounting points.



Image: The dash cam display showing various viewing modes, including simultaneous front and interior camera feeds.

Yansoo 64GB Micro Memory Card

The included 64GB Micro Memory Card is optimized for use with the Yansoo Dash Cam, ensuring reliable data storage for your recordings. Its specifications include:

- Capacity: 64GB
- Speed Class: UHS-1, U3, V10, Class 10
- Read Speed: Up to 100 MB/s
- Write Speed: Standard (minimum 10 MB/s for Class 10)
- Features: Temperature Proof, X-Ray Proof, Water Resistant
- Compatibility: Dash Cams, Mobile Phones, Cameras, Game Consoles, Computers, Tablets, Surveillance Systems, Drones.



Image: The Yansoo 64GB Micro Memory Card, highlighting its capacity and speed ratings.

Work Well and Widely Compatible

Compatible with a wide range of devices.



Mobile Phones



Cameras



Dash Cameras



Game Consoles



Computers



Tablets



Surveillance System



Drones

Image: Diagram illustrating the wide compatibility of the Yansoo 64GB Micro Memory Card with various devices.

SETUP INSTRUCTIONS

1. Insert the Micro Memory Card

1. Locate the MicroSD card slot on the dash cam.
2. Gently insert the Yansoo 64GB Micro Memory Card into the slot until it clicks into place. Ensure the card is inserted in the correct orientation.
3. To remove, gently push the card inward until it springs out.

Important: Always format the memory card within the dash cam settings before first use and periodically thereafter to maintain optimal performance and prevent data corruption.

2. Mount the Dash Cam

1. Clean the windshield surface where you intend to mount the dash cam.
2. Attach the suction cup mount to the dash cam.

3. Press the suction cup firmly against the windshield and engage the locking mechanism to secure it.
4. Adjust the angle of the dash cam to ensure a clear view of the road ahead and the vehicle's interior.



F1.8 LARGE APERTURE

Dashcam front and inside able to maintain a clear vision in many harsh environments



WDR



Dual HD1080P



Parking Monitor Loop Recording



Wide Angle



Motion Detection



4 IR LEDs



Emergency Lock

Image: The Yansoo Dual Dash Cam attached to its suction cup mount, ready for installation on a windshield.

3. Power Connection

1. Connect the provided power cable to the dash cam's power input port.
2. Plug the other end of the power cable into your vehicle's 12V power outlet (cigarette lighter socket).
3. Route the cable neatly along the windshield and dashboard to avoid obstructing your view or interfering with driving controls.

OPERATING INSTRUCTIONS

Basic Operation

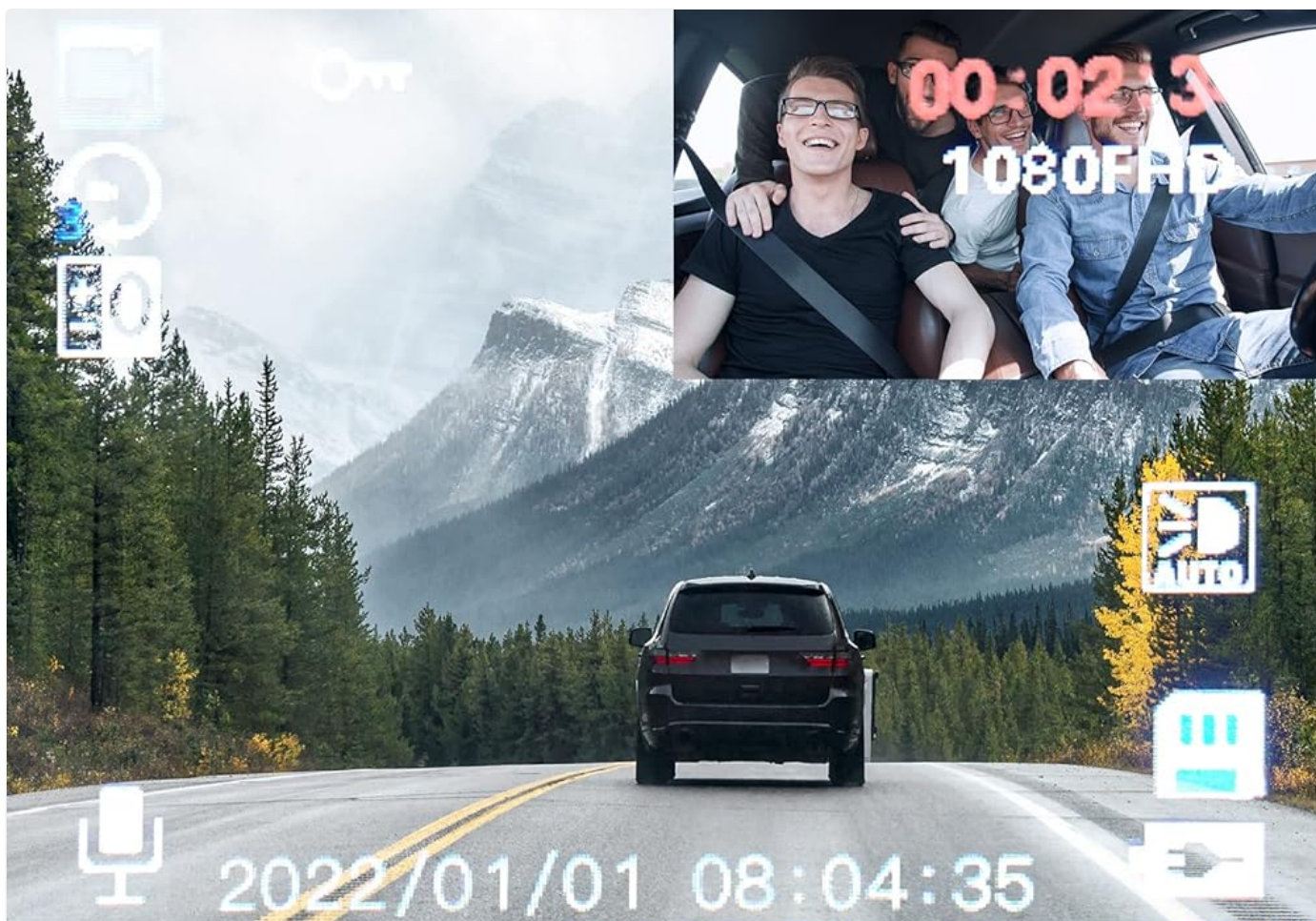
- **Power On/Off:** The dash cam typically powers on automatically when the vehicle starts and powers off when the engine is turned off. You can also manually power it on/off using the power button.
- **Recording:** Once powered on, the dash cam will automatically begin loop recording.
- **Display Modes:** Use the menu buttons to switch between different display modes (front camera only, interior camera only, picture-in-picture, etc.).



Image: The dash cam screen showing various display options for viewing front and interior camera feeds.

Key Features

- **Loop Recording:** The dash cam continuously records video in short segments. When the memory card is full, it automatically overwrites the oldest unlocked files.
- **Emergency Lock Video (G-Sensor):** In the event of a sudden impact or collision, the built-in G-Sensor will detect the event and automatically lock the current video file, preventing it from being overwritten by loop recording.
- **Parking Monitor:** When enabled, the dash cam can detect impacts or motion while the vehicle is parked and automatically record a short video. This feature requires a continuous power supply (e.g., hardwire kit, sold separately) for 24-hour monitoring.
- **Motion Detection:** When enabled, the dash cam will start recording when motion is detected in front of the camera.
- **Infrared Night Vision:** The interior camera utilizes 4 infrared LEDs to provide clear video footage even in low-light or no-light conditions inside the vehicle.



Witness of accident

With built-in G-Sensor, camera will automatically lock current files when detecting collision, provide video evidence for an insurance claim in a road accident



Loop Recording

Seamless loop recording automatically overwrites the oldest footage when card full, except locked files



Image: Visual representation of the G-Sensor detecting an accident and the loop recording function overwriting old files.



Infrared night vision

The inside camera with 4 infrared LED lights can handle low light conditions and ensure the footage details

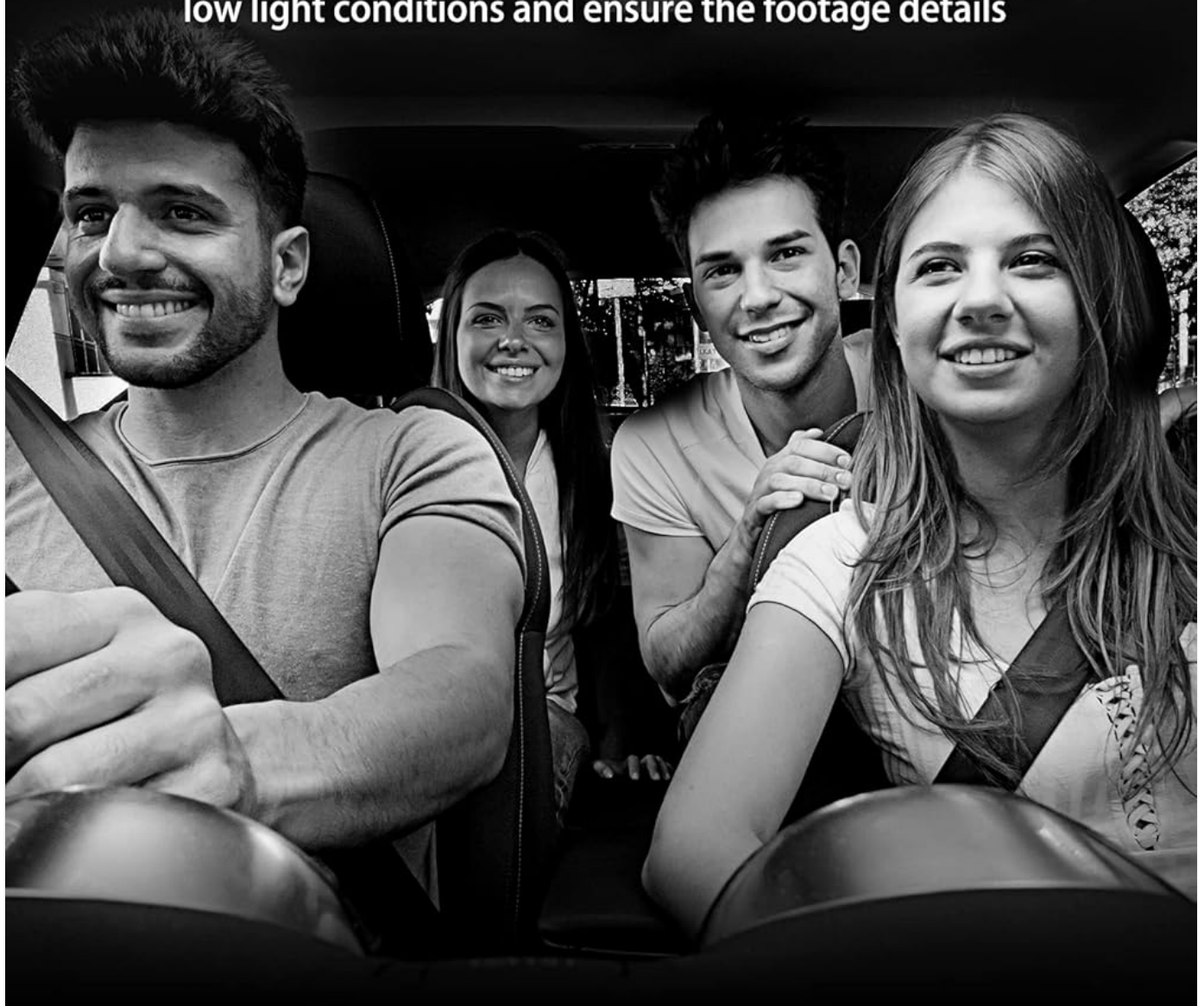


Image: Illustration of the interior camera's infrared night vision capability, showing clear footage of passengers in low light.

MAINTENANCE

- **Memory Card Formatting:** Regularly format the Micro Memory Card (at least once a month) through the dash cam's settings menu to ensure stable recording and prolong the card's lifespan.
- **Lens Cleaning:** Gently clean the camera lenses with a soft, lint-free cloth to remove dust or smudges that may affect video quality.
- **Firmware Updates:** Check the manufacturer's website periodically for any available firmware updates for the dash cam. Follow the instructions provided with the update carefully.
- **Storage Conditions:** Avoid exposing the dash cam to extreme temperatures for extended periods.

TROUBLESHOOTING

Problem	Possible Solution
Dash cam does not power on.	<ul style="list-style-type: none">• Check if the power cable is securely connected to both the dash cam and the vehicle's 12V outlet.• Ensure the vehicle's 12V outlet is functioning.• Try a different power cable if available.
Recording stops or freezes.	<ul style="list-style-type: none">• Format the Micro Memory Card within the dash cam's settings.• Ensure the memory card is a high-speed card (UHS-1, Class 10 or higher).• Clean the memory card contacts.• Try a different compatible memory card.
Video quality is poor.	<ul style="list-style-type: none">• Clean the camera lenses.• Ensure the protective film has been removed from the lenses.• Check dash cam settings for video resolution.
G-Sensor is too sensitive/not sensitive enough.	<ul style="list-style-type: none">• Adjust the G-Sensor sensitivity setting in the dash cam's menu.

SPECIFICATIONS

Yansoo Dual Dash Cam

- **Video Resolution:** Front 1080P, Interior 1080P
- **Aperture:** F1.8
- **Lens Angle:** Front 170°, Cabin 140°
- **Night Vision:** 4 Infrared LEDs (for interior camera)
- **Special Features:** G-Sensor, Loop Recording, Parking Monitor, Motion Detection, WDR
- **Connectivity:** USB (for power)

Yansoo 64GB Micro Memory Card

- **Capacity:** 64 GB
- **Flash Memory Type:** SD (MicroSD)
- **Speed Class:** UHS-1, U3, V10, Class 10
- **Read Speed:** Up to 100 MB/s
- **Write Speed:** 10 MB/s (minimum for Class 10)
- **Special Features:** Temperature Proof, X-Ray Proof, Water Resistant
- **Hardware Interface:** MicroSD
- **Model Name:** Yansoo 64GB Micro Memory Card
- **Item Model Number:** e40985f7-a44c-438f-ab4d-7fbfdb419bb5


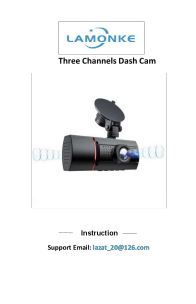

WARRANTY AND SUPPORT


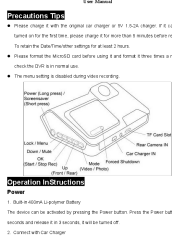

The Yansoo 64GB Micro Memory Card comes with a Limited Warranty. For specific details regarding the warranty period and terms, please refer to the product packaging or contact Yansoo customer support.

For technical support, troubleshooting assistance, or warranty claims, please visit the official Yansoo website or contact their customer service department. Contact information can typically be found on the product packaging or the brand's official online presence.

Yansoo Store: [Visit Yansoo Store on Amazon](#)

Related Documents - Dual Dash Cam & 64GB Micro Memory Card

	<p>Yansoo X88 Dashcam User Manual and Installation Guide</p> <p>This document provides a comprehensive user manual and installation guide for the Yansoo X88 Dashcam. It covers important notes, device overview, operation modes (video, photo, playback), system settings, button functions, installation steps, and frequently asked questions (FAQ).</p>
	<p>LAMONKE Three Channels Dash Cam User Manual and Warranty</p> <p>Comprehensive user manual and warranty information for the LAMONKE Three Channels Dash Cam, covering installation, operation, features, and troubleshooting.</p>
	<p>WALNEW SD Card Reader: Questions, Compatibility, and Usage</p> <p>Information about the WALNEW SD card reader, including frequently asked questions, compatible devices, and incompatible items. Covers usage, transfer speeds, warranty, and file formats.</p>

	<p>ROVE R2-4K PRO Dash Cam User Manual: Features, Setup, and Support</p> <p>Comprehensive user manual for the ROVE R2-4K PRO Dash Cam. Learn about installation, features, settings, Wi-Fi connectivity, parking modes, troubleshooting, and warranty information for your vehicle's advanced driving recorder.</p>
	<p>User Manual: Range Tour Car Dash Cam - Operation and Specifications</p> <p>Comprehensive user manual for the Range Tour Car Dash Cam, covering precautions, operation instructions, motion detection, parking monitor, G-sensor, emergency file locking, PC connection, menu settings, troubleshooting, and detailed specifications. Includes a list of included accessories.</p>
	<p>CIEVIE D100PRO Dash Cam User Manual: Installation, Specs, Features</p> <p>Comprehensive user manual for the CIEVIE D100PRO dash cam. Covers installation, 4K recording, GPS, parking mode, safety guidelines, and technical specifications. Support available via email and website.</p>