



Manuals.plus /

› MoreFeel /

› MoreFeel Collapsible Baby Bathtub with Thermometer and Accessories - User Manual

## MoreFeel YT-6868

# MoreFeel Collapsible Baby Bathtub with Thermometer and Accessories - User Manual

Model: YT-6868

## 1. IMPORTANT SAFETY INFORMATION

**Baby bathtubs require constant supervision due to the high risk of drowning and burns. Even in shallow water, babies can drown quickly. Always keep one hand on your baby in the water and never leave them unattended.**

- Always test water temperature before placing your baby in the tub.
- Ensure the bathtub is placed on a stable, flat surface.
- Never lift or move the bathtub with a baby inside.
- Keep all bath products and accessories out of reach of children when not in use.
- Inspect the bathtub and all components regularly for wear or damage. Discontinue use if any damage is found.

## 2. PRODUCT OVERVIEW

The MoreFeel Collapsible Baby Bathtub is designed for convenience and safety, suitable for newborns to toddlers (0-36 months). It features a collapsible design for easy storage and portability, an integrated thermometer for optimal water temperature, and comes with a soft floating cushion and a hooded towel.

### 2.1 What's Included

- 1 x MoreFeel Collapsible Baby Bathtub
- 1 x Soft Floating Cushion
- 1 x Hooded Towel



Figure 1: MoreFeel Collapsible Baby Bathtub with included accessories.

### 3. SETUP INSTRUCTIONS

#### 3.1 Unfolding the Bathtub

Follow these steps to safely unfold your MoreFeel Collapsible Baby Bathtub:

1. Place the folded bathtub on a flat, stable surface.
2. Unfold the doubled-up tub by gently pulling the two halves apart until it forms a flat shape.
3. Extend the support legs outwards until they lock securely into place. Ensure all four legs are fully extended and stable.
4. Press down on the tub bottom firmly to fully expand the bathtub. You should hear a click indicating it is locked open.



Figure 2: Visual guide for unfolding the bathtub.

### 3.2 Attaching the Soft Floating Cushion

The soft floating cushion provides support for newborns and infants. Secure it to the bathtub by attaching its straps to the designated points on the tub's edges. Ensure the cushion is stable and properly positioned before placing your baby in it.

## 4. OPERATING INSTRUCTIONS

### 4.1 Filling the Bathtub and Temperature Monitoring

1. Place the unfolded bathtub on a stable, non-slip surface.
2. Begin filling the tub with water. The integrated digital thermometer will display the water temperature in real-time.
3. Aim for a water temperature between 98.6°F (37°C) and 100.4°F (38°C). Adjust water temperature as needed to ensure your baby's comfort and safety.
4. Do not overfill the tub. Ensure the water level is appropriate for your baby's size and age, typically not exceeding their waist when seated.



Figure 3: Real-time temperature measurement on the bathtub.

### 4.2 Bathing Your Baby

Always maintain constant supervision during bath time. Keep one hand on your baby at all times.

- For newborns (0-12 months): Use the soft floating cushion to support your baby in a lying position.
- For older infants and toddlers (12-36 months): The cushion can be removed, allowing the child to sit comfortably in the tub.
- Ensure all bath products are within easy reach but not accessible to the baby.



Figure 4: Baby bathing with the floating cushion.

# APPLICABLE MORE AGES



**0-12 Month**

**Baby Lying Down Bathing**

**12-24 Month**

**Baby Sit Up Bathing**



Figure 5: Recommended age ranges and bathing positions.

## 4.3 Draining the Bathtub

After bathing, pull the rubber drain plug located at the bottom of the tub to release the water. The off-the-ground drain design simplifies water drainage without needing to lift the tub. Ensure all water is completely drained before cleaning or folding.

## 5. MAINTENANCE

### 5.1 Cleaning

- After each use, rinse the bathtub thoroughly with clean water.
- Wipe down the surfaces with a soft cloth and mild soap if necessary. Avoid abrasive cleaners or harsh chemicals.
- Ensure the tub is completely dry before folding and storing to prevent mold or mildew growth.
- The floating cushion and hooded towel can be hand-washed or machine-washed on a gentle cycle with mild detergent. Air dry thoroughly.

## 5.2 Storage

To fold the bathtub for storage:

1. Ensure the tub is completely dry.
2. Press down on the tub bottom to release the locking mechanism.
3. Press and hold the button while moving the plastic strips on both sides inward to begin collapsing the tub.
4. Fold the support legs inwards until they are flat against the tub.
5. Fold the tub again from the middle, reducing its thickness to under 4 inches for compact storage.

### DISASSEMBLY STEPS

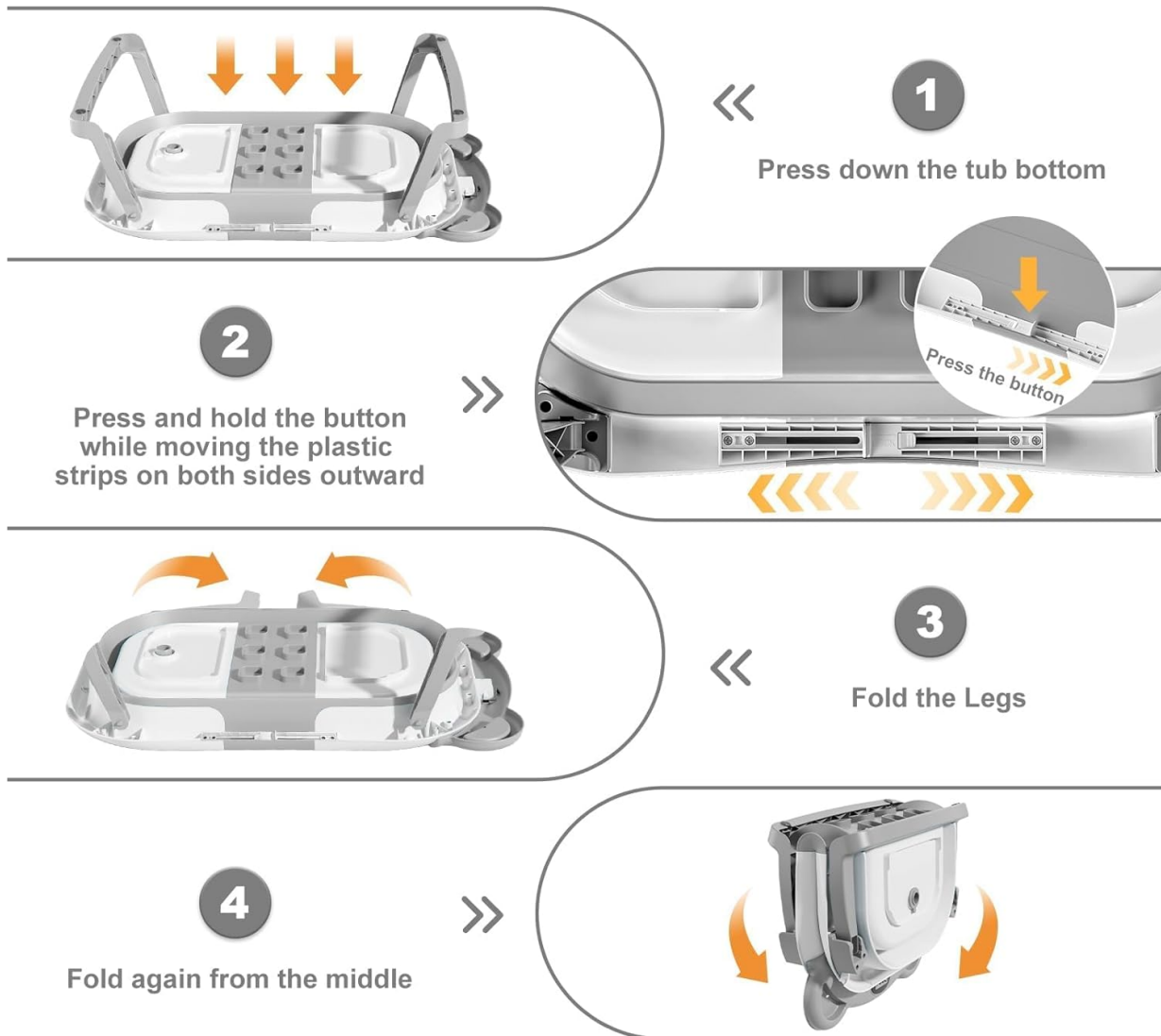


Figure 6: Disassembly and folding steps for compact storage.



Figure 7: The bathtub's compact folded state for easy storage.

## 6. TROUBLESHOOTING

Issue	Possible Cause	Solution
Bathtub does not unfold or fold easily.	Mechanism not fully engaged or disengaged.	Ensure you press down firmly on the bottom to lock it open, or press the release button when folding. Refer to Section 3.1 and 5.2.
Thermometer not displaying temperature.	No water in contact with sensor or battery issue.	Ensure water covers the thermometer sensor. If the issue persists, check if the battery needs replacement (requires 2x AAA batteries, not included).
Floating cushion feels unstable.	Improper attachment or baby's movement.	Re-attach the cushion, ensuring all straps are securely fastened. Always keep a hand on your baby for support.

## 7. SPECIFICATIONS

Feature	Detail
Model Number	YT-6868
Product Dimensions (Unfolded)	27"L x 17"W x 9"H (68.6 cm L x 43.2 cm W x 22.9 cm H)
Item Weight	4.29 pounds (1.95 kg)
Age Range	0-36 months
Material	Polypropylene (PP), Thermoplastic Elastomer (TPE)
Color	Grey (Bear like pattern)
Special Features	Collapsible, Portable, Real-time Thermometer, Drain Hole, Includes Floating Cushion & Hooded Towel
Batteries Required	Yes (for thermometer, type not specified but typically button cell or AAA)

## 8. WARRANTY AND SUPPORT

---

### 8.1 Warranty Information

Specific warranty details are not provided in this manual. Please refer to the product packaging or contact MoreFeel customer service for warranty terms and conditions.

### 8.2 Customer Support

For any product inquiries, assistance, or to report issues, please contact our customer service team. Our 24-hour service team is ready to assist you.

Contact information can typically be found on the product packaging or through the retailer's website where the product was purchased. You may also visit the official MoreFeel store on Amazon for support options:

MoreFeel Store