

## EMAY EMG-6L

# EMAY 6L Portable ECG Monitor User Manual

Record ECG and Heart Rate in 6 Channels | Compatible with Smartphone and PC | No Subscription Required

## 1. IMPORTANT SAFETY INFORMATION

- The device is intended for OTC (over-the-counter) Use.
- Implanted pacemakers are not recommended to use with this device.
- This device is not intended to substitute for a hospital diagnostic ECG device.
- Consult your physician before making any medical decisions based on device readings.

## 2. PACKAGE CONTENTS

The EMAY 6L Portable ECG Monitor package includes:

- EMAY 6L Portable ECG Monitor Device
- USB Charging Cord
- User Manual

## 3. PRODUCT OVERVIEW

The EMAY 6L Portable ECG Monitor is designed for home health care, allowing users to record and store ECG signals and display heart rate in 6 channels. It offers flexibility with no subscription fees and compatibility with both smartphones and PCs.



EMAY 6L Portable ECG Monitor in use, demonstrating standalone 6-lead recording.

## Key Features:

- Records ECG signals and heart rate in 6 channels.
- Compatible with iOS & Android smartphones and Windows & Mac PCs.
- No subscription or hidden costs required for device and app usage.
- Powered by a built-in large capacity rechargeable lithium battery.
- Features a 2.4-inch LCD color screen for instant readings and rhythm playback.
- Built-in data memory stores up to 100 readings.
- Lightweight (85 grams) and portable design.

## 4. SETUP

### 4.1 Charging the Device

Before first use, fully charge the device using the provided USB charging cord. Connect the USB cord to the device and a compatible USB power source (e.g., computer USB port, wall adapter).

### 4.2 App and PC Software Installation

To utilize advanced features like data review, sharing, and detailed analysis, download the EMAY ECG app for your smartphone (iOS or Android) or the PC software (Windows or Mac). Follow the on-screen instructions for installation and pairing.

Free apps for  
Smartphone &  
Computer



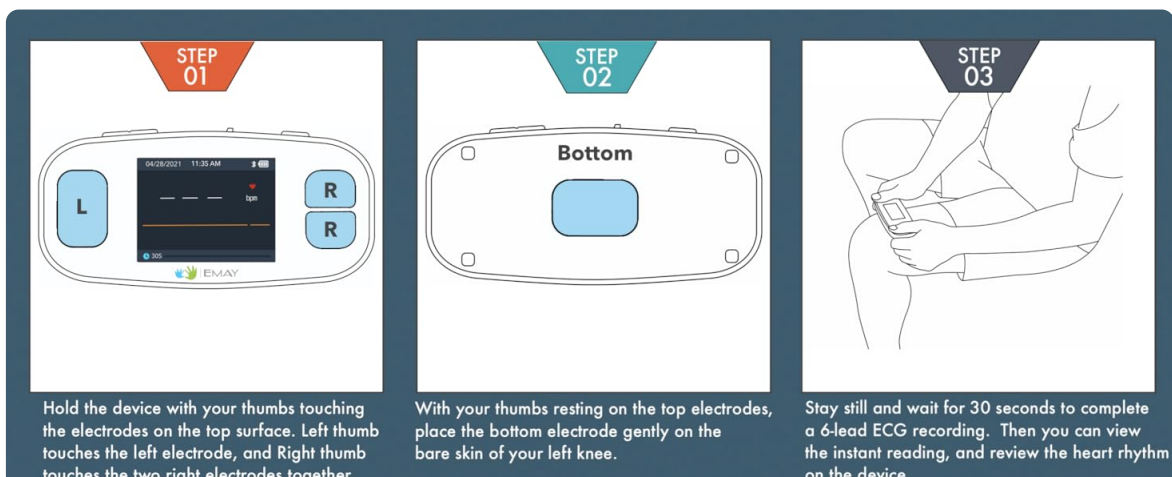
Compatible with  
iOS & Android, Windows & Mac

The EMAY 6L monitor can connect to both smartphones and computers for data management.

## 5. OPERATING INSTRUCTIONS

### 5.1 Performing a 6-Lead ECG Recording

1. Hold the device with your thumbs touching the electrodes on the top surface.
2. Ensure your left thumb touches the left electrode, and your right thumb touches the two right electrodes together.
3. Gently place the bottom electrode on the bare skin of your left knee.
4. Stay still and wait for 30 seconds to complete the recording.
5. View the instant reading and review the heart rhythm on the device screen.



Official product video demonstrating 6-lead recording and app syncing for the EMAY 6L Portable ECG Monitor.

## 5.2 Performing a 1-Lead ECG Recording

1. Hold the device with both thumbs touching the top electrodes.
2. Stay still for 30 seconds to complete the recording.
3. View the instant reading and review the heart rhythm on the device screen.



**Apply with Two Thumbs & Left Knee**

- More Details
- Better Accuracy
- Deeper Insight



**6 Leads = 6 Times Data**  
Get thorough evaluation of your heart from six perspectives



Performing a 1-lead ECG recording using only two thumbs.

Video demonstrating how to perform a 1-lead ECG recording using the EMAY 6L Portable ECG Monitor by holding it with both thumbs.

## 5.3 Viewing Stored Readings and Playback

The device stores up to 100 readings. You can review your past readings directly on the device using the built-in playback function. This allows for immediate review of heart rhythms without needing a connected device.



### Standalone

#### Well Integrated 6-Lead ECG Device

This is a truly standalone monitor with 2.4" color screen & storage for up to 100 readings. You can review your past readings with a click of the button on the device.

Not only can you view the rhythms in real time, but also can re-play them anytime you want on the device. This is what we call "playback" feature. You can simply show the rhythms on the device to your Dr. directly without using a smartphone.

The device offers instant readings and rhythm playback directly on its screen.

## 5.4 Syncing and Sharing Reports

Connect the device to your smartphone via Bluetooth or to your PC via USB to sync your recorded ECG data. The companion app/software allows you to review detailed 6-channel ECG reports, save them as images or PDFs, and share them with your doctor via email or printouts.

### EMAY ECG Report

The EMAY ECG report contains four pages of 6-channel heart rhythms and information. Share the reports by printouts or emails with your doctor on smartphone/computer easily and unlimitedly.

Your doctor will have sufficient heart data to better evaluate your situation for accurate decision making.

Example of an EMAY ECG report on a smartphone and printed, ready for sharing.

## 6. MAINTENANCE

- Clean the device regularly with a soft, dry cloth. Do not use abrasive cleaners or immerse the device in water.
- Store the device in a cool, dry place away from direct sunlight and extreme temperatures.
- Ensure the electrodes are clean and free of debris for accurate readings.
- Charge the battery regularly, even if not in frequent use, to maintain battery health.

## 7. TROUBLESHOOTING

- **No reading/Poor signal:** Ensure proper skin contact with electrodes. Clean electrodes if necessary. Remain still during recording.
- **Device not turning on:** Check battery level and charge the device if needed.
- **Bluetooth connection issues:** Ensure Bluetooth is enabled on your smartphone/PC. Restart the device and the app.
- **App not syncing data:** Verify the device is properly connected via Bluetooth or USB. Check app permissions.

## 8. SPECIFICATIONS

Feature	Detail
Brand	EMAY
Model Number	EMG-6L
Material	Acrylic, Metal
Color	Blue
Compatible Devices	Smartphones (iOS & Android), PC (Windows & Mac)
Screen Size	2.4 Inches
Product Dimensions	4.7"L x 2.2"W x 0.7"H
Item Weight	85 Grams
Sensor Type	ECG
Battery Description	Lithium
Unit Count	1.0 Count
UPC	767461320046

### Standalone

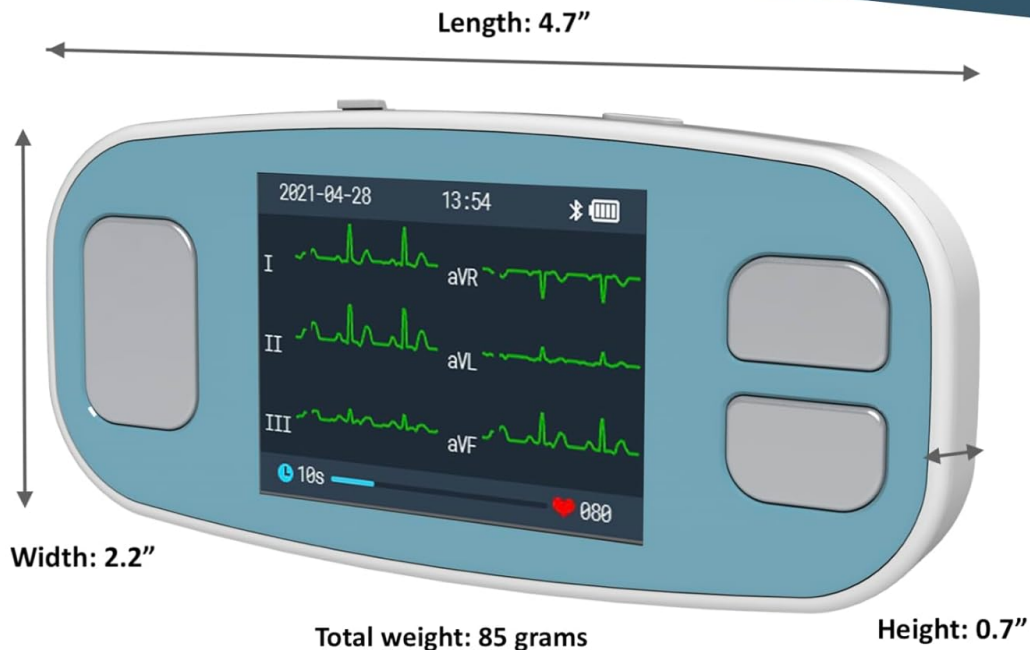
- 2.4" LCD color screen
- Built-in data memory to store up to 100 readings
- Rhythm playback capability

### Portable

- Lightweight with 85g only
- Small enough to fit in your pocket on the go
- Built-in rechargeable lithium battery

### Easy to Use

- No wires required
- No phone required
- No wi-fi required
- No subscription



Dimensions and weight of the EMAY 6L Portable ECG Monitor.

## 9. WARRANTY INFORMATION

The EMAY 6L Portable ECG Monitor comes with a **1-year warranty** from the date of purchase. Please retain your proof of purchase for warranty claims. The warranty covers manufacturing defects and malfunctions under normal use conditions. It does not cover damage caused by misuse, accidents, unauthorized modifications, or improper maintenance.

## 10. CUSTOMER SUPPORT

For any questions, technical assistance, or warranty inquiries, please contact EMAY Customer Support:

- Visit the official EMAY website for FAQs and support resources.
- Refer to the contact information provided in your product packaging.

