

Manuals+

[Q & A](#) | [Deep Search](#) | [Upload](#)

manuals.plus /

- › [WAVE](#) /
- › [Wave Tahoe Eco Foam Hot Tub User Manual](#)

WAVE Tahoe Eco Foam Hot Tub

Wave Tahoe Eco Foam Hot Tub User Manual

Model: Tahoe Eco Foam Hot Tub
Brand: WAVE

1. INTRODUCTION

Welcome to the Wave Tahoe Eco Foam Hot Tub user manual. This guide provides essential information for the safe and efficient use, setup, operation, and maintenance of your new hot tub. Please read this manual thoroughly before installation and use, and keep it for future reference.



Image: The Wave Tahoe Eco Foam Hot Tub, showcasing its sleek pebble white exterior and dark interior, ready for use.

2. IMPORTANT SAFETY INSTRUCTIONS

When installing and using this electrical equipment, basic safety precautions should always be followed, including the following:

- Read and follow all instructions carefully.
- Do not permit children to use this product unless they are closely supervised at all times.
- A ground fault circuit interrupter (GFCI) must be provided for this product.
- The hot tub must be supplied by a switched fused spur with a minimum 13A rating.
- Do not operate the hot tub if the cover is not securely fastened.
- Never operate the hot tub if the water temperature exceeds 104°F (40°C).
- Consult a physician before use if you have health conditions.
- Keep all electrical appliances away from the hot tub.
- Ensure the hot tub is placed on a level, stable surface capable of supporting its full weight when filled.

3. PACKAGE CONTENTS AND PRODUCT OVERVIEW

3.1 Package Contents

Verify that all components are present and undamaged:

- Wave Tahoe Eco Foam Hot Tub Unit
- Insulating Cover with Childproof Safety Clips
- Control Panel Unit
- Filter Cartridge(s)
- 3.1m Waterproof Power Cable with RCD Plug
- User Manual

3.2 Product Overview

The Wave Tahoe Eco Foam Hot Tub features an innovative Eco Foam Core construction, offering superior thermal efficiency. It includes an integrated heating system, a powerful 70 Aqua Jet Massage System, and an advanced filtration system for clean water.

Revolutionary new hot tub construction



Efficient

Wave Eco Foam Core construction which is 50% more energy efficient than inflatable spas.

WAVEeco



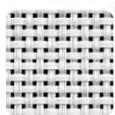
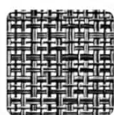
Energy Saving Cover

Inflatable weather resistant cover retains heat. Includes childproof safety clips.



Personalized

Changeable outer cover, select from a range of styles and colors.



Safe

3.1m waterproof power cable including RCD plug.



Image: An exploded diagram illustrating the Eco Foam Core construction, the energy-saving cover, and the RCD power cable, highlighting the hot tub's key features.

4. SETUP GUIDE

4.1 Site Preparation

Choose a suitable location for your hot tub. The surface must be:

- Flat and level.
- Capable of supporting the weight of the hot tub when filled (approximately 217 gallons / 821 liters of water plus occupants).
- Near a suitable power outlet with GFCI protection.
- Away from direct sunlight or sharp objects that could damage the tub.

4.2 Assembly Steps (Approx. 20 minutes, no tools required)

1. Unpack all components and lay them out on the prepared site.

2. Unfold the hot tub unit and position it correctly.
3. Connect the control panel unit to the hot tub. Ensure all connections are secure.
4. Install the filter cartridge(s) into the designated housing.
5. Fill the hot tub with water to the recommended level (between the MIN and MAX fill lines).
6. Plug the RCD power cable into a suitable GFCI-protected electrical outlet.
7. Place the insulating cover securely on the hot tub and fasten the childproof safety clips.

Product Specification

Water Capacity:

4 Person - 143 Gal
6 Person - 217 Gal



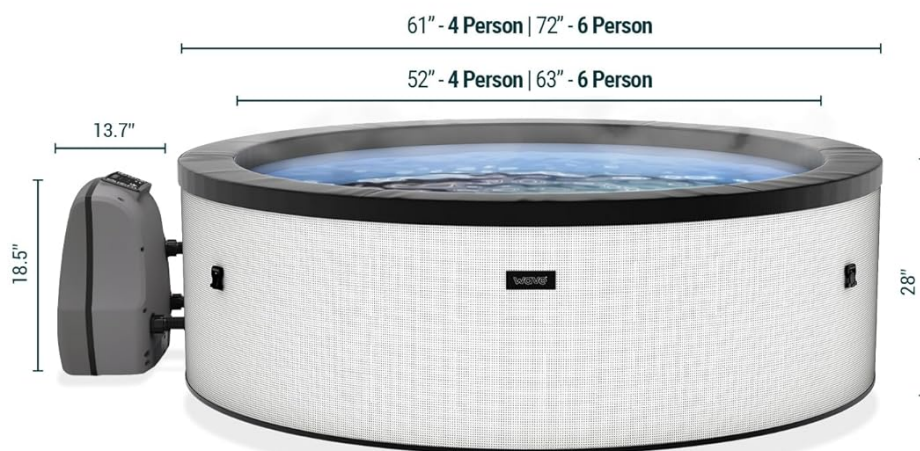
No tools required



20 minute set up



Up to 6 persons



Advanced Heating Unit



Advanced Filtration

Keep your spa clean and healthy with 2006l/Hr of filtration.



70 Aquajet Massage System

Relax in bubbly bliss with our 650W pump



Heating

Heat to 104°F at a rate of up to 1.8°F per hour

Image: A detailed diagram outlining the hot tub's dimensions, water capacity for 4 and 6 persons, and specifications for the advanced heating unit, 70 Aquajet Massage System, and advanced filtration.

5. OPERATING INSTRUCTIONS

5.1 Control Panel

The digital control panel allows you to manage all functions of your hot tub. Familiarize yourself with the buttons:

- **Power Button:** Turns the hot tub on/off.
- **Temperature Adjustment:** Use the up/down arrows to set desired water temperature (up to 104°F / 40°C).

- **Filter Button:** Activates/deactivates the filtration system.
- **Bubble/Jet Button:** Activates/deactivates the Aqua Jet Massage System.
- **Heat Button:** Activates/deactivates the heating function.

5.2 Heating the Water

Once the hot tub is filled and powered on, press the Heat button. The water will heat up at a rate of approximately 1.8°F (1°C) per hour until it reaches the set temperature. Keep the insulating cover on during heating to maximize efficiency.

5.3 Massage System

Press the Bubble/Jet button to activate the 70 Aqua Jet Massage System. The powerful 650W pump will create invigorating bubbles for a relaxing experience. Press the button again to turn off the system.

5.4 Filtration System

The filtration system operates automatically to keep your water clean. You can manually activate or deactivate it using the Filter button. Regular filtration is crucial for water quality.



Image: An overhead shot of the hot tub in use, demonstrating its capacity for multiple users and its integration into an outdoor living space.

6. MAINTENANCE AND CARE

6.1 Water Treatment

Maintain proper water chemistry using recommended hot tub chemicals (e.g., chlorine, bromine, pH balancer). Test the water regularly and adjust chemical levels as needed to prevent algae growth and ensure bather safety.

6.2 Filter Cartridge Cleaning/Replacement

The filter cartridge should be cleaned regularly (e.g., weekly) by rinsing it with a garden hose. Replace the filter cartridge every 1-2 months, or more frequently depending on usage and water quality, to maintain optimal filtration efficiency.

6.3 Draining and Cleaning

Drain and clean your hot tub every 1-3 months, or as needed. Follow these steps:

- 1. Disconnect power to the hot tub.
- 2. Attach a garden hose to the drain valve and open the valve to drain the water.
- 3. Once empty, clean the interior surfaces with a soft cloth and a mild, non-abrasive cleaner specifically designed for hot tubs.
- 4. Rinse thoroughly and refill with fresh water.

6.4 Storage

If storing the hot tub for an extended period, ensure it is completely drained, cleaned, and dry. Deflate the tub if applicable, and store it in a dry, temperate location away from direct sunlight and pests.



Image: The hot tub with its insulating cover on, demonstrating how the cover helps retain heat and protect the tub when not in use.

7. TROUBLESHOOTING

This section addresses common issues you might encounter with your hot tub.

Problem	Possible Cause	Solution
Hot tub not heating	Heater not activated; low water level; dirty filter; ambient temperature too low.	Ensure heat function is on; check water level; clean/replace filter; ensure cover is on.
Water not circulating/filtering	Filter clogged; pump airlock; filter not installed correctly.	Clean/replace filter; bleed air from pump; re-install filter correctly.
Bubbles/Jets not working	Air pump not activated; air intake blocked.	Ensure bubble function is on; check for obstructions around air intake.
Error code on display	Specific system fault.	Refer to the control panel manual for specific error code meanings and solutions. Try resetting power.

Problem	Possible Cause	Solution
Water quality issues (cloudy, green)	Improper chemical balance; insufficient filtration; heavy usage.	Test and adjust water chemistry; clean/replace filter; increase filtration time.

8. PRODUCT SPECIFICATIONS






Feature	Specification
Model	Tahoe Eco Foam Hot Tub
Brand	WAVE
ASIN	B0C86DF6QC
Seating Capacity	6 Persons
Water Capacity (6 Person)	217 Gallons (821 Liters)
Max. Water Temperature	104°F (40°C)
Heating Rate	Up to 1.8°F (1°C) per hour
Massage System	70 Aqua Jet Massage System (650W pump)
Filtration Rate	200 GV/Hr
Material	Polyvinyl Chloride (PVC) with Eco Foam Core
Color	Pebble White
Power Cable Length	3.1m (with RCD plug)

9. WARRANTY AND SUPPORT

Specific warranty details for the Wave Tahoe Eco Foam Hot Tub are not provided within this manual. Please refer to your purchase documentation, the product packaging, or contact WAVE customer support directly for information regarding warranty coverage, terms, and conditions.

For technical support, spare parts, or further assistance, please visit the official WAVE website or contact their customer service department. Contact information is typically found on the product packaging or the brand's official website.



	<p>Wave Eco Foam Spa User Manual: Setup, Operation, and Safety Guide</p> <p>Your essential guide to the Wave Eco Foam Spa. Learn how to safely set up, operate, maintain, and troubleshoot your spa. Includes details on models like Garda, Tahoe, and Como, with warranty information.</p>
	<p>Wave Como 4-6 Person Spa Installation Manual & Guide</p> <p>Comprehensive installation manual and guide for the Wave Como 4-6 Person Inflatable Spa. Learn how to set up, operate, maintain, and troubleshoot your hot tub.</p>
	<p>Wave Inflatable Spas Installation and User Manual</p> <p>Comprehensive guide for installing, using, and maintaining Wave inflatable spas, covering setup, safety, operation, and troubleshooting. Includes specifications, package contents, and warranty information.</p>
	<p>Wave Inflatable Spa User Manual (UK) - Setup, Operation, and Maintenance Guide</p> <p>Comprehensive user manual for the Wave Inflatable Spa (UK). Covers safety instructions, setup, operation, water maintenance, troubleshooting, and warranty information for your Wave inflatable hot tub.</p>
	<p>Wave Swift Spa Installation and User Manual</p> <p>Comprehensive installation and user manual for the Wave Swift Spa, providing detailed instructions on setup, operation, maintenance, safety guidelines, and troubleshooting for this 6-person hot tub.</p>
	<p>Wave Osaka Spa Installation and User Manual: Setup, Operation, and Maintenance Guide</p> <p>Comprehensive installation and user manual for the Wave Osaka Spa. Learn how to safely set up, operate, maintain, and troubleshoot your hot tub for optimal enjoyment and longevity.</p>

