

Yottamaster NVMe-Hub-1

Yottamaster 10-in-1 USB-C Hub with M.2 SSD Enclosure

Model: NVMe-Hub-1

INTRODUCTION

This manual provides detailed instructions for the Yottamaster 10-in-1 USB-C Hub with M.2 SSD Enclosure. This versatile docking station integrates multiple ports and an M.2 SSD slot, enhancing connectivity and storage capabilities for your devices. Please read this manual thoroughly before use to ensure proper operation and longevity of your device.

PRODUCT FEATURES

- **10-in-1 Connectivity:** Offers a comprehensive range of ports for various peripherals.
- **M.2 SSD Enclosure:** Supports M.2 NVMe and SATA SSDs (2230, 2242, 2260, 2280 sizes) for expanded storage up to 8TB.
- **High-Speed Data Transfer:** Features 10Gbps USB 3.2 Gen2 ports for rapid file transfers.
- **4K@60Hz HDMI Output:** Connects to external displays for high-resolution video output.
- **100W Power Delivery (PD):** Provides fast charging for compatible laptops and devices.
- **Gigabit Ethernet:** Ensures stable and high-speed wired network connection.
- **Dual Card Reader:** Integrated SD/TF3.0 card slots for efficient data access.
- **Magnetic Design:** Easy-to-open magnetic top cover for SSD installation.
- **Efficient Heat Dissipation:** Aluminum alloy casing with M.2 heatsink and thermal pads for optimal performance.

PACKAGE CONTENTS

Verify that all items are present in the package:

- Yottamaster USB-C Hub with M.2 SSD Enclosure
- Storage Bag
- USB-C to C 10G Cable (0.5M)
- Plastic Plug

- Thermal Silicone Pads
- Heatsink with Copper Heatpipe
- User Manual
- Packaging Box



Image: Package contents of the Yottamaster USB-C Hub, including the hub, storage bag, cables, and installation accessories.

SETUP

M.2 SSD Installation

1. Remove the enclosure's magnetic top cover.
2. Attach the silicone thermal pad to your M.2 SSD.
3. Secure the heatsink vest on top of the thermal pad and SSD.
4. Insert the plastic plug into the SSD's end groove.
5. Insert the SSD into the M.2 slot at a 30-degree angle for proper alignment.
6. Rotate the plastic plug to firmly secure the SSD in place.
7. Close the magnetic top cover.

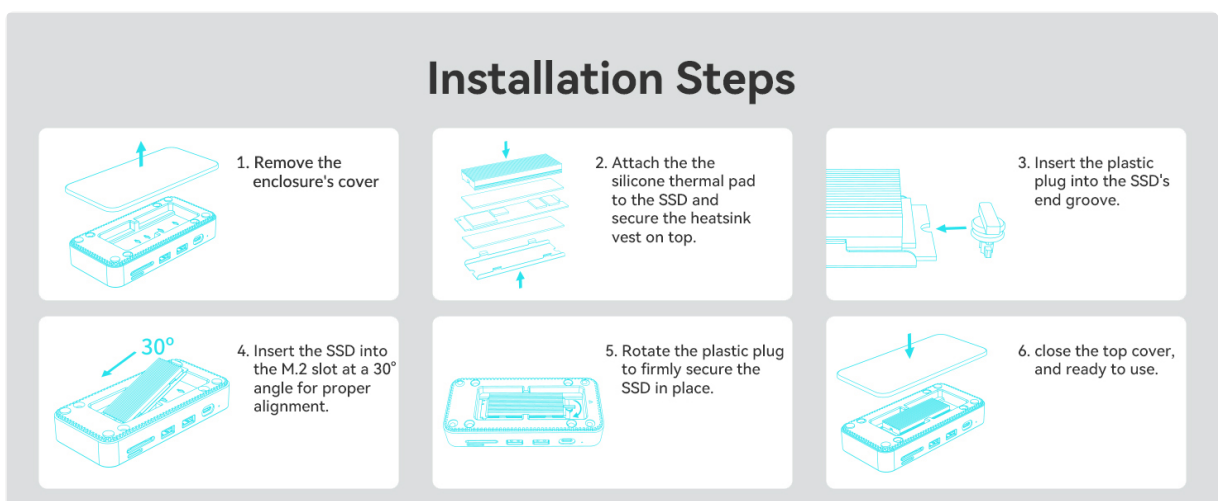


Image: Step-by-step visual guide for installing an M.2 SSD into the Yottamaster hub enclosure.

Your browser does not support the video tag.

Video: Demonstrates the installation process of an M.2 SSD into the Yottamaster USB-C Hub enclosure.

Connecting the Hub

Connect the Yottamaster USB-C Hub to your host device (laptop, tablet, etc.) using the provided USB-C to C cable. Ensure a secure connection for optimal performance.



Image: The Yottamaster USB-C Hub connected to a laptop, with multiple peripherals attached, showcasing its 10-in-1 functionality.

OPERATING INSTRUCTIONS

Port Functionality

- **USB 3.2 Gen2 Type-C (10Gbps):** For high-speed data transfer with compatible USB-C devices.
- **USB 3.2 Gen2 Type-A (10Gbps):** For high-speed data transfer with compatible USB-A devices.
- **USB 3.0 Type-A (5Gbps):** For standard data transfer with USB-A devices.
- **HDMI (4K@60Hz):** Connect to an external monitor or TV for video output.
- **RJ45 Gigabit Ethernet:** Connect to a wired network for stable internet access.
- **SD/TF3.0 Card Reader:** Insert SD or TF (MicroSD) cards for data access.
- **USB-C PD100W:** Connect a power adapter to charge your host device.



Image: Detailed view of the Yottamaster USB-C Hub, highlighting its various ports and their respective functions.

Your browser does not support the video tag.

Video: Provides an overview of the Yottamaster USB-C Hub, showcasing its 10 ports and M.2 SSD enclosure.

Data Transfer

Utilize the USB 3.2 Gen2 ports for transferring large files quickly. The integrated M.2 SSD enclosure allows for high-speed storage expansion directly through the hub.



Image: Illustrates the high-speed data transfer capabilities of the Yottamaster USB-C Hub, showing a 10Gbps speed test result.

Display Connection

Connect an HDMI cable from the hub to your external display. Ensure your display and cable support 4K@60Hz for optimal resolution.

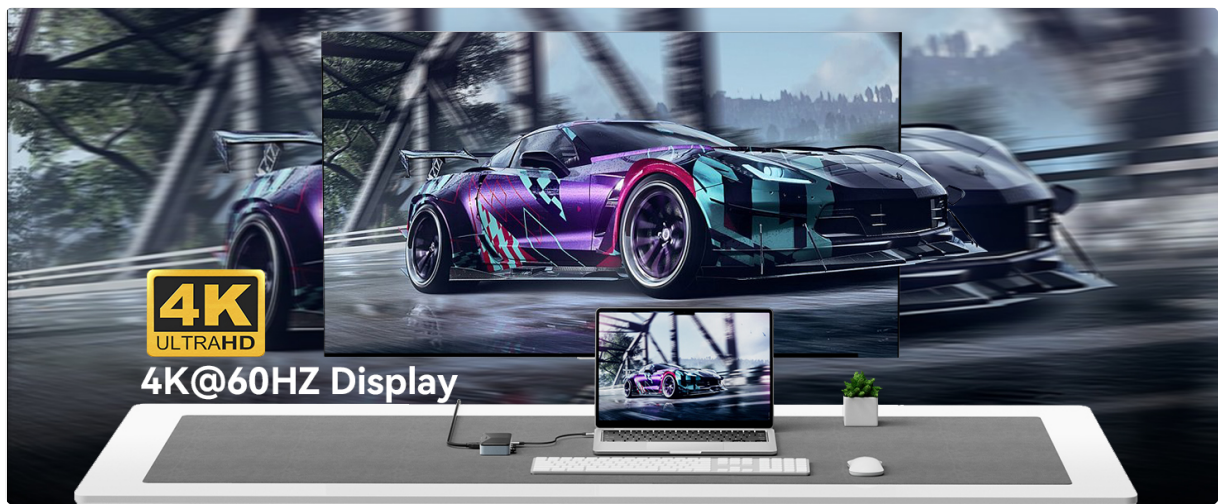


Image: A laptop connected to an external monitor via the Yottamaster USB-C Hub, displaying 4K@60Hz video content.

Power Delivery

Connect a 100W PD compatible power adapter to the hub's PD port. This will provide pass-through charging to your connected laptop or device.



Image: A laptop being fast-charged via the Yottamaster USB-C Hub's 100W Power Delivery port.

MAINTENANCE

To ensure optimal performance and longevity of your Yottamaster USB-C Hub, follow these maintenance guidelines:

- **Cleaning:** Use a soft, dry cloth to clean the exterior of the hub. Avoid liquid cleaners.
- **Heat Management:** The aluminum alloy casing and integrated heatsink are designed for efficient heat dissipation. Ensure adequate airflow around the device, especially during heavy use.
- **Storage:** When not in use, store the hub in its protective storage bag to prevent dust and damage.
- **Cable Care:** Avoid bending or twisting cables excessively to prevent internal damage.



Image: Diagram illustrating the excellent heat conductivity of the Yottamaster USB-C Hub, detailing its M.2 aluminum heatsink, thermal pad, copper heatpipe, air convection design, and aluminum alloy casing.

TROUBLESHOOTING

If you encounter issues with your Yottamaster USB-C Hub, refer to the following common solutions:

- **No Power/Charging:** Ensure the PD port is connected to a compatible power adapter (100W recommended) and the hub is securely connected to your host device.
- **Display Issues:** Verify that your HDMI cable is functioning correctly and securely connected. Check your device's display settings to ensure the external monitor is detected and configured.
- **SSD Not Detected:** Confirm the M.2 SSD is correctly installed and secured within the enclosure. Check your operating system's disk management utility to see if the SSD is recognized and formatted.
- **Slow Data Transfer:** Ensure you are using USB 3.2 Gen2 compatible cables and devices. Older USB standards will result in lower speeds.
- **Intermittent Connections:** Reconnect all cables. Ensure no ports are obstructed and the hub is placed on a stable surface.

SPECIFICATIONS

Feature	Specification
Model Number	NVMe-Hub-1
Ports	10 (3x USB-A, 2x USB-C, 1x HDMI, 1x RJ45, 1x SD, 1x TF, 1x M.2 SSD Slot)
USB Data Transfer Speed	USB 3.2 Gen2 (10Gbps)
HDMI Output	4K@60Hz
Power Delivery	Up to 100W
Ethernet	1000Mbps (Gigabit)
Card Reader	SD/TF3.0
SSD Compatibility	M.2 NVMe/SATA (2230, 2242, 2260, 2280)
Max SSD Capacity	8TB
Material	Aluminum Alloy

Dimensions	6.5 x 4.45 x 1.73 inches
Weight	10.8 ounces

COMPATIBILITY

The Yottamaster USB-C Hub is compatible with a wide range of operating systems and devices:

- **Operating Systems:** Windows, Mac OS, Linux
- **Devices:** Laptops (e.g., MacBook Pro), PCs, Tablets (e.g., iPad), Gaming Consoles (e.g., Xbox, Switch, PS5), Smartphones.

M.2 NVMe & M.2 SATA SSD Compatible

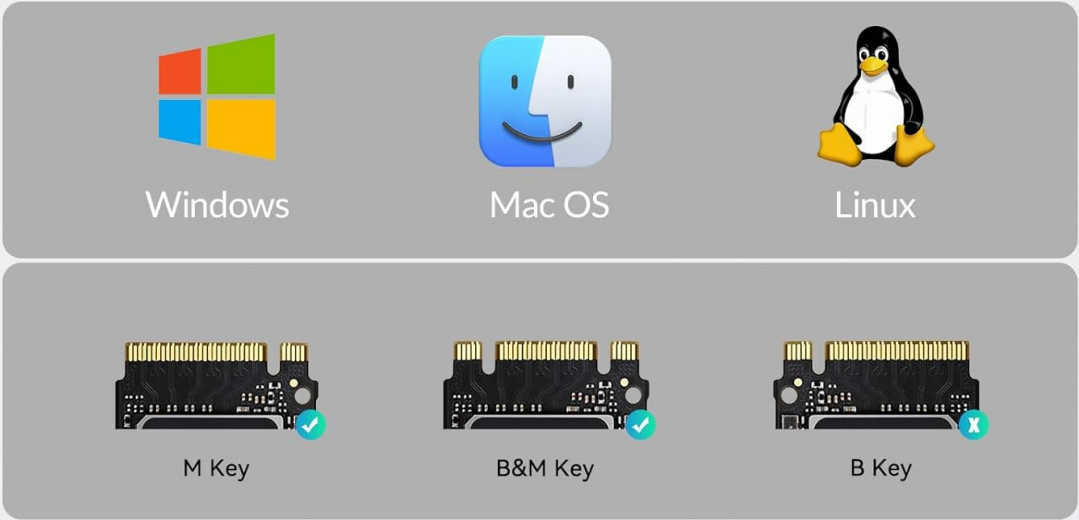


Image: Illustrates compatibility of the M.2 SSD enclosure with Windows, Mac OS, and Linux operating systems, showing supported M.2 key types.

WARRANTY AND SUPPORT

Yottamaster products are designed for reliability and performance. For warranty information, technical support, or any inquiries, please refer to the official Yottamaster website or contact their customer service directly. Keep your purchase receipt for warranty claims.

