

## Ewent EW7025

# Ewent EW7025 M.2 NVMe/PCIe SSD Enclosure User Manual

Model: EW7025

## 1. INTRODUCTION

---

This manual provides detailed instructions for the installation, operation, and maintenance of your Ewent EW7025 M.2 NVMe/PCIe SSD Enclosure. This external enclosure allows you to convert an M.2 NVMe/PCIe solid-state drive into a portable storage solution, leveraging USB 3.2 Gen 2 for high-speed data transfer up to 10Gbps. It supports various M.2 NVMe SSD sizes and features UASP for enhanced performance.

## 2. PACKAGE CONTENTS

---

Please verify that all items listed below are included in your package:

- 1 x Ewent EW7025 M.2 NVMe/PCIe SSD Enclosure
- 1 x USB Type-C to USB Type-C Cable
- 1 x USB Type-C to USB Type-A Cable
- 1 x User Manual (this document)



Image: The Ewent EW7025 enclosure shown with its two connecting cables (USB-C to USB-C and USB-C to USB-A).

### 3. SPECIFICATIONS

<b>Model</b>	EW7025
<b>Material</b>	Aluminium
<b>Color</b>	Black
<b>Interface</b>	USB 3.2 Gen 2 (USB-C and USB-A compatible)
<b>Data Transfer Rate</b>	Up to 10Gbps
<b>SSD Compatibility</b>	M.2 NVMe/PCIe SSDs (M Key, M+B Key)
<b>Supported SSD Sizes</b>	2230, 2242, 2260, 2280
<b>Max Storage Capacity</b>	2TB
<b>Supported Operating Systems</b>	Windows, macOS, Linux, Android
<b>Special Features</b>	UASP support, IP54 (Portable)
<b>Product Dimensions</b>	15 x 13.5 x 3.8 cm
<b>Item Weight</b>	0.13 kg

# M.2 NVMe SSD Enclosure

solid-state hard drive transfer USB 3.1 interface to the mobile hard disk, using type C cable connection, support 2230/2242/2260/2280 four specifications

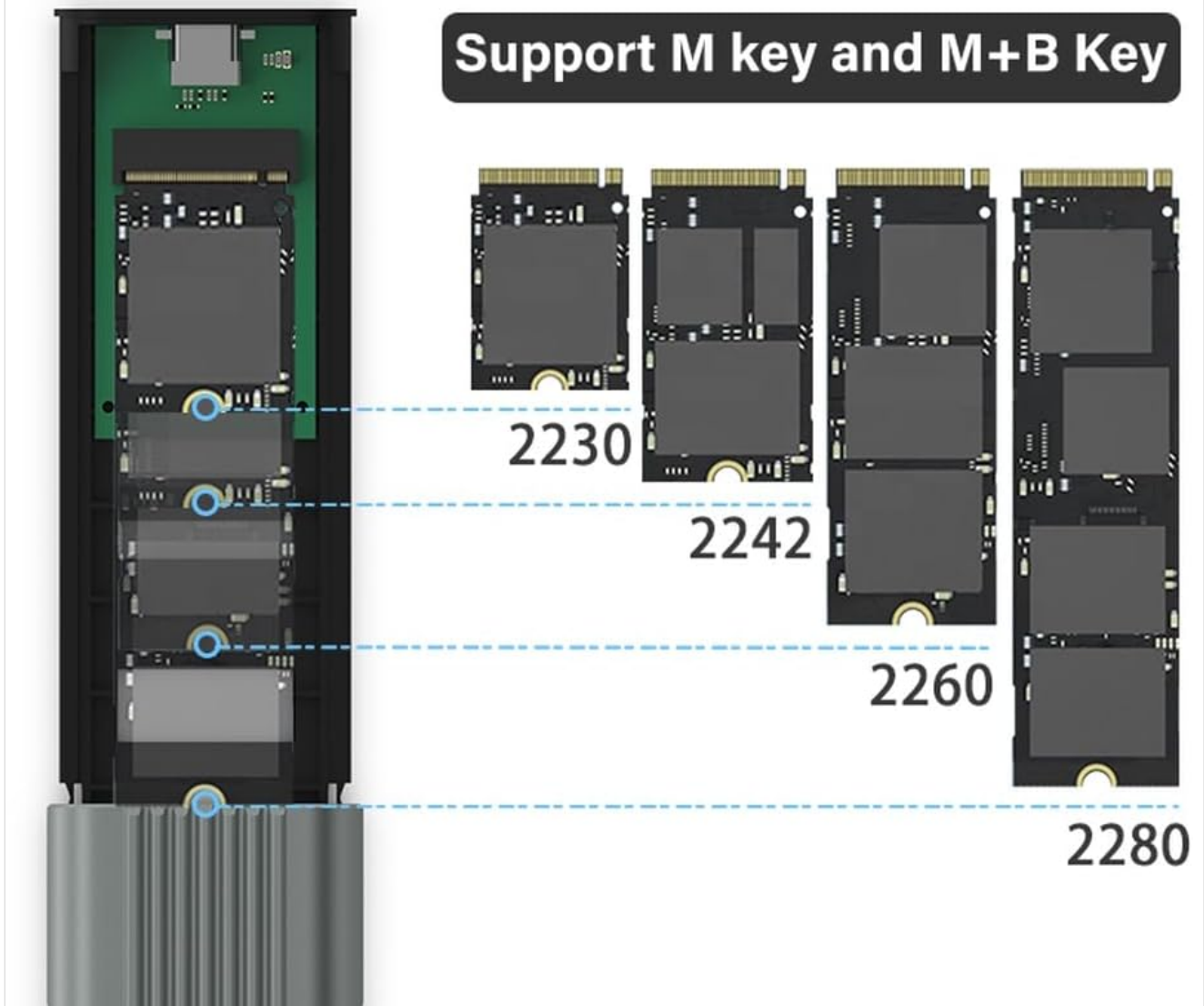


Image: Visual representation of compatible M.2 NVMe SSD types (M Key, M+B Key) and supported lengths (2230, 2242, 2260, 2280).

## 4. SETUP: SSD INSTALLATION

Follow these steps to install your M.2 NVMe SSD into the enclosure:

1. **Open the Enclosure:** Press the release button or slide the end cap to open the enclosure and reveal the internal tray.

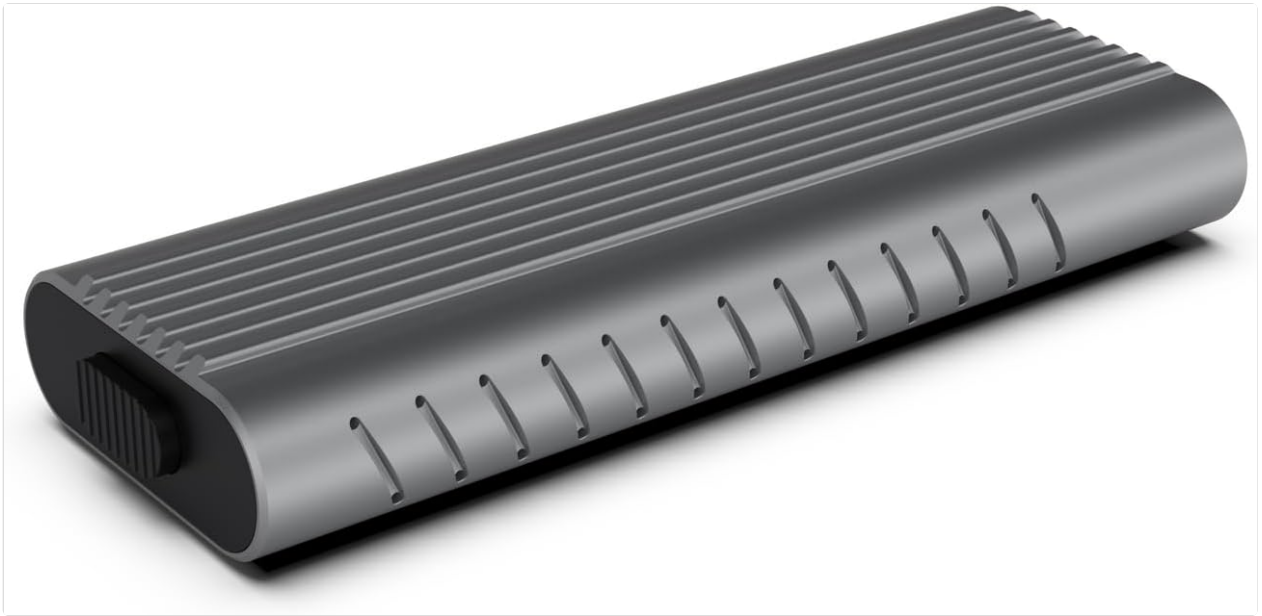


Image: The enclosure with its internal tray slid out, ready for SSD installation.

2. **Insert the M.2 NVMe SSD:** Carefully align your M.2 NVMe SSD with the slot on the internal circuit board. Insert the SSD at an angle into the M-key slot until it is fully seated.
3. **Secure the SSD:** Gently push down the SSD and secure it with the provided mounting screw or rubber fastener, depending on the enclosure design. Ensure the SSD is flat and firmly held in place.



Image: The enclosure with an M.2 NVMe SSD correctly installed on the internal board.

4. **Close the Enclosure:** Slide the internal tray back into the aluminum housing until it clicks securely into place.

# Convenient Installation Design

Mount Drives only in 4 steps



1. Press to slide out of the center frame



2. Point the slot and put SSD



3. Mounting screw fixation



4. Push the card tight  
Complete the installation

Image: Step-by-step visual guide for installing an M.2 SSD into the enclosure.

## 5. OPERATING INSTRUCTIONS

Once the SSD is installed, connect the enclosure to your computer or compatible device:

1. **Connect the Cable:** Use either the provided USB Type-C to Type-C cable or the USB Type-C to Type-A cable to connect the enclosure to an available USB port on your computer. For optimal performance (up to 10Gbps), connect to a USB 3.2 Gen 2 compatible port.
2. **Device Recognition:** Your operating system should automatically detect the enclosure. If it's a new SSD, you may need to initialize and format it through your operating system's disk management utility before use.
3. **Data Transfer:** You can now drag and drop files to and from the enclosure as you would with any other

external storage device.



Image: The Ewent EW7025 enclosure connected to a laptop, demonstrating its use as external storage.

## 6. TROUBLESHOOTING

---

- **Enclosure Not Detected:**

- Ensure the SSD is correctly installed and secured within the enclosure.
- Try connecting the enclosure to a different USB port on your computer.
- Test with both provided USB cables.
- Verify that your M.2 SSD is NVMe/PCIe and not SATA, as this enclosure is designed for NVMe/PCIe only.
- Check your computer's Disk Management (Windows) or Disk Utility (macOS) to see if the drive is recognized but uninitialized/unformatted.

- **Slow Data Transfer Speeds:**

- Ensure you are connected to a USB 3.2 Gen 2 (10Gbps) compatible port on your computer. Older USB

- 2.0 or 3.0 ports will result in lower speeds.
  - Verify that your operating system and drivers are up to date.
  - The performance of the SSD itself can affect transfer speeds.
- **Enclosure Gets Warm During Use:**
    - It is normal for the aluminum enclosure to become warm during high-speed data transfer, as it acts as a heatsink to dissipate heat from the NVMe SSD. This is part of its design for efficient heat management.

## 7. MAINTENANCE

---

- Keep the enclosure clean and free from dust. Use a soft, dry cloth for cleaning.
- Avoid exposing the enclosure to extreme temperatures, direct sunlight, or high humidity.
- Do not attempt to disassemble the enclosure beyond the SSD installation process, as this may void your warranty.

## 8. WARRANTY AND SUPPORT

---

For warranty information and technical support, please refer to the Ewent official website or contact your retailer. Keep your proof of purchase for warranty claims.