



---

[Manuals.plus](#) /

› [Smowo](#) /

› Smowo 10mm Maxi Fuse Bead Pegboards Instruction Manual (SMW-870)

## Smowo SMW-870

# Smowo 10mm Maxi Fuse Bead Pegboards Instruction Manual

## PRODUCT OVERVIEW

---

The Smowo 10mm Maxi Fuse Bead Pegboards set includes four large, transparent interlocking pegboards in various shapes: round, star, square, and heart. This kit is designed to facilitate creative fuse bead projects for children aged 3 and up, helping to develop fine motor skills and concentration. Pattern templates are included to guide users in creating diverse designs.

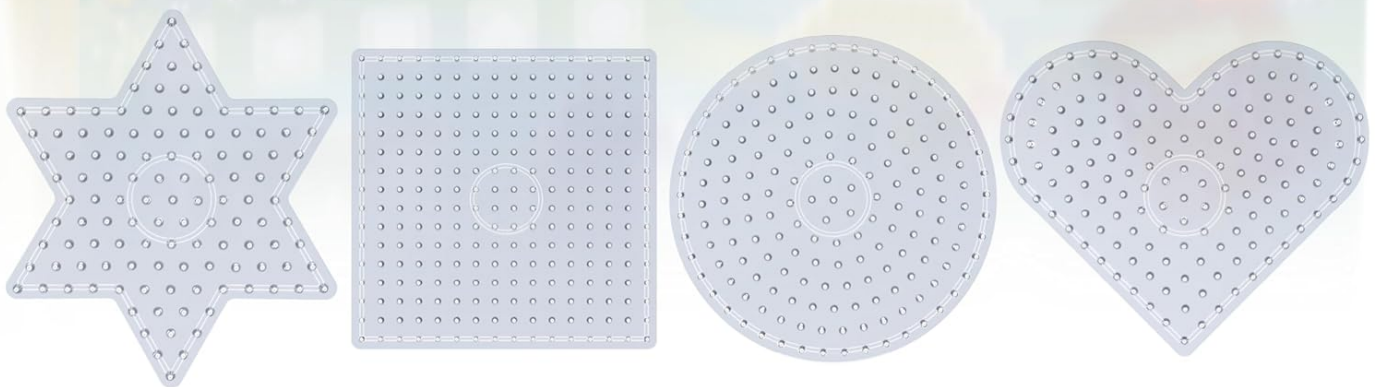


Image: The Smowo 10mm Maxi Fuse Bead Pegboards set, featuring four transparent pegboards in round, square, star, and heart shapes. Below them are examples of finished fuse bead designs, including a rainbow circle, a yellow duck, a pink heart, and a multi-colored star. The image also indicates a maximum size of 160mm for the boards.

## COMPONENTS INCLUDED

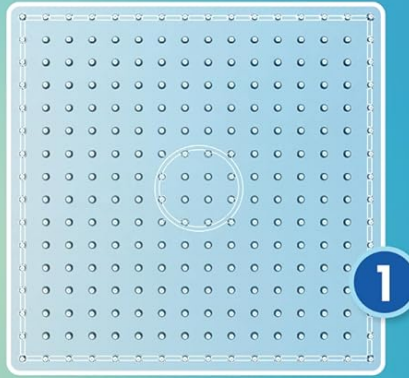
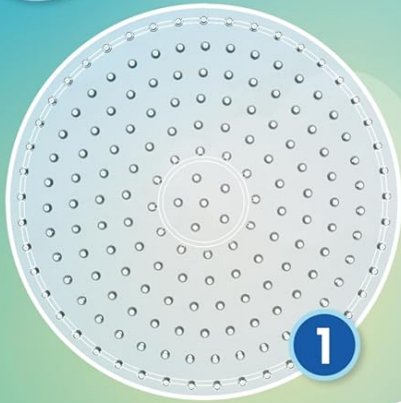
Your Smowo Maxi Fuse Bead Pegboards set contains the following items:

- 4 x XL Pegboards (Round, Star, Square, Heart)
- Pattern Templates
- Instruction Guide (this manual)

*Note: Fuse beads are sold separately and are not included in this kit. We recommend using Smowo 10mm maxi fuse beads for optimal results.*

# 4

## Plaques pour débutants



Max.  
160 mm

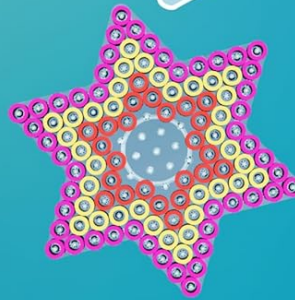
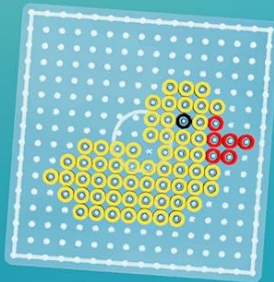
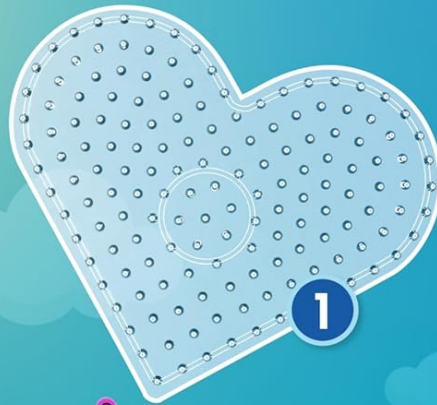
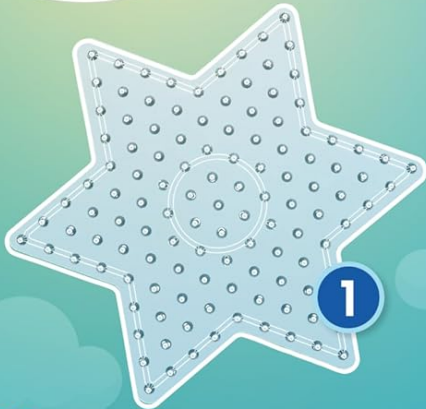


Image: A visual representation of the four transparent pegboards included in the set: one round, one square, one star, and one heart. Below these boards are examples of completed fuse bead creations, demonstrating the potential designs that can be made. The image highlights that these are "4 Beginner Boards" and specifies a maximum dimension of 160mm.

### SETUP AND PREPARATION

1. **Choose a Design:** Select one of the included pattern templates or create your own design.
2. **Position the Template:** Place the chosen pattern template underneath the transparent pegboard. Ensure the template aligns with the pegs on the board.
3. **Prepare Beads:** Have your 10mm maxi fuse beads ready and sorted by color for easy access.

# 8

## Modèles de motifs inclus

Pour perles extra grandes

10 mm



Placez les modèles en papier sous la plaque et commencez à jouer !

Image: Eight individual Smowo pattern templates are displayed, each featuring a different design composed of colored circles, indicating where fuse beads should be placed. Examples include a bird, a ladybug, and other creative shapes. The image emphasizes that "8 Pattern Templates Included" and specifies they are "For extra large beads 10 mm".

### OPERATING INSTRUCTIONS

- 1. Place the Beads:** Carefully place the 10mm maxi fuse beads onto the pegs of the board, following your chosen pattern. Ensure each bead is firmly seated on a peg.
- 2. Ironing Process (Adult Supervision Required):**
  - Once the design is complete, place a piece of ironing paper (parchment paper) over the beads on the pegboard.
  - Using a household iron set to a medium heat (no steam), gently iron over the ironing paper in a circular motion for approximately 10-20 seconds. The beads will begin to fuse together.
  - Allow the design to cool slightly. Carefully remove the ironing paper.
  - Flip the design over, remove it from the pegboard, and place the ironing paper on the other side. Iron the second side for another 10-20 seconds to ensure durability.

- Allow the finished design to cool completely on a flat surface to prevent warping.



Image: A close-up of a young child's hands carefully placing a yellow fuse bead onto a transparent square pegboard, forming part of a duck design. Various colorful fuse beads are scattered around the board. Accompanying text highlights the product's benefits: "From 3 years", "Beads for small hands", "Improves fine motor skills", and "Strengthens concentration".

## Instructional Video

Watch this short video for a visual guide on how to use the Smowo Maxi Fuse Bead Pegboards and fuse the beads.

Your browser does not support the video tag.

Video: A short demonstration showing the process of placing individual fuse beads onto a pegboard to form a unicorn design, followed by covering the design with ironing paper and fusing the beads with an iron. The video concludes by showcasing various finished fuse bead creations.

## CARE AND MAINTENANCE

- **Cleaning:** The pegboards can be cleaned with a damp cloth and mild soap if necessary. Avoid abrasive cleaners.

- **Storage:** Store the pegboards and templates in a dry place away from direct sunlight to prevent warping or damage.
- **Durability:** The pegboards are made from high-quality plastic and are reusable. With proper care, they will last for many creative projects.



Image: This image displays the four transparent pegboards in circle, square, heart, and star shapes. Text overlays indicate that these boards are "sturdy and reusable with proper use" and show a maximum dimension of 160mm, reinforcing their quality and longevity.

## TROUBLESHOOTING

### Common Issues and Solutions

Issue	Possible Cause	Solution
Beads not fusing together	Iron not hot enough or not enough ironing time.	Increase iron temperature slightly or iron for a longer duration (5-10 seconds more). Ensure even heat distribution.
Beads melting too much/design warping	Iron too hot or too much ironing time.	Reduce iron temperature or iron for a shorter duration. Move the iron continuously to prevent overheating one spot.
Design sticking to ironing paper	Design not cooled enough before removing paper.	Allow the design to cool for a few more seconds before attempting to remove the ironing paper.
Pegboard warping	Iron applied directly to the pegboard or excessive heat.	Always use ironing paper between the iron and the beads. Ensure the iron is not too hot. If warping occurs, the board may need replacement.

## SPECIFICATIONS

Feature	Detail
Brand	Smowo
Model Number	SMW-870
Color	Transparent

Feature	Detail
Product Dimensions (L x W x H)	16 x 16 x 1 cm
Item Weight	260 grams
Material	Plastic
Number of Pieces	4 (pegboards)
Pegboard Shapes	Square, Round, Heart, Star
Compatibility	Designed for 10mm Maxi Fuse Beads

## WARRANTY AND SUPPORT

Smowo products are manufactured to high-quality standards. For any questions, concerns, or support regarding your Smowo Maxi Fuse Bead Pegboards, please contact our customer service. While specific warranty details are not provided in this manual, we are committed to ensuring your satisfaction with our products.

For additional patterns and creative ideas, visit the official Smowo website or explore our [Smowo Brand Store on Amazon](#).