

[Manuals.plus](#) /

> [MEETION](#) /

> MEETION Wireless Keyboard and Mouse Combo User Manual

MEETION MT-C4130

MEETION Wireless Keyboard and Mouse Combo User Manual

Model: MT-C4130

1. INTRODUCTION

Thank you for choosing the MEETION Wireless Keyboard and Mouse Combo. This full-sized cordless keyboard with an integrated wrist rest and a 3-DPI adjustable mouse is designed to provide a comfortable and efficient computing experience. Utilizing advanced 2.4G wireless technology, it ensures a reliable and seamless connection without interference. This manual provides detailed instructions for setup, operation, maintenance, and troubleshooting to help you get the most out of your new device.



Image: The MEETION wireless keyboard and mouse combo, featuring a full-sized pink keyboard with wrist rest, a matching pink mouse, and the USB-A receiver and USB-C adapter.

2. PACKAGE CONTENTS

Please check the package carefully to ensure all items are present:

- 1 x MEETION Wireless Keyboard
- 1 x MEETION Wireless Mouse
- 1 x USB-A Receiver
- 1 x USB-C Adapter
- 1 x User Manual (this document)

3. SETUP GUIDE

3.1 Battery Installation

The keyboard and mouse require AA batteries (not included). Please follow these steps:

1. Locate the battery compartment on the underside of the keyboard and mouse.
2. Open the battery covers.
3. Insert one (1) AA battery into the keyboard, ensuring correct polarity (+/-).
4. Insert one (1) AA battery into the mouse, ensuring correct polarity (+/-).
5. Close the battery covers securely.



Image: Diagram showing the battery compartments for both the keyboard and mouse, indicating where to insert the AA batteries.

3.2 Connecting the Wireless Receiver

The keyboard and mouse share a single USB-A receiver. The receiver is typically stored within the mouse's battery compartment or a dedicated slot next to it for convenience.

1. Remove the USB-A receiver from its storage slot in the mouse.
2. Plug the USB-A receiver into an available USB-A port on your computer, laptop, or compatible device.
3. If your device only has USB-C ports, attach the provided USB-C adapter to the USB-A receiver, then plug the adapter into a USB-C port on your device.
4. The keyboard and mouse should automatically connect to your device. No additional drivers are typically required for most operating systems.



2 in 1 USB Nano Receiver with 2.4G Wireless Connection

Image: A laptop connected wirelessly to the pink keyboard and mouse combo, illustrating the 2.4G wireless connection.

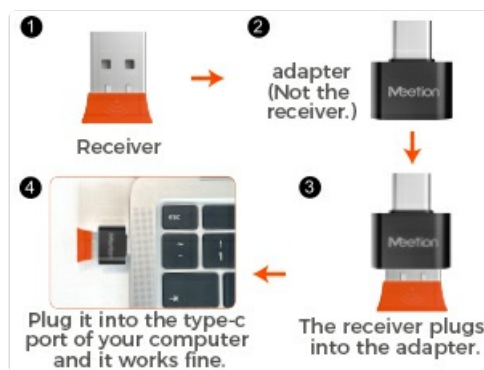


Image: Close-up of the compact USB-A receiver and the included USB-C adapter, demonstrating how they connect.

4. OPERATING INSTRUCTIONS

4.1 Keyboard Functions

The keyboard features a full-size layout with a numeric keypad and an integrated wrist rest for enhanced comfort during long typing sessions. It includes standard function keys (F1-F12) and multimedia shortcut keys accessible by pressing the 'Fn' key in combination with the respective function key.

- **Multimedia Functions (Fn + F-keys):**

- Fn + F1: Music
- Fn + F2: Volume Down
- Fn + F3: Volume Up
- Fn + F4: Mute
- Fn + F5: Previous Track
- Fn + F6: Play/Pause
- Fn + F7: Next Track
- Fn + F8: Stop
- Fn + F9: Email
- Fn + F10: Homepage
- Fn + F11: Computer
- Fn + F12: Favorites

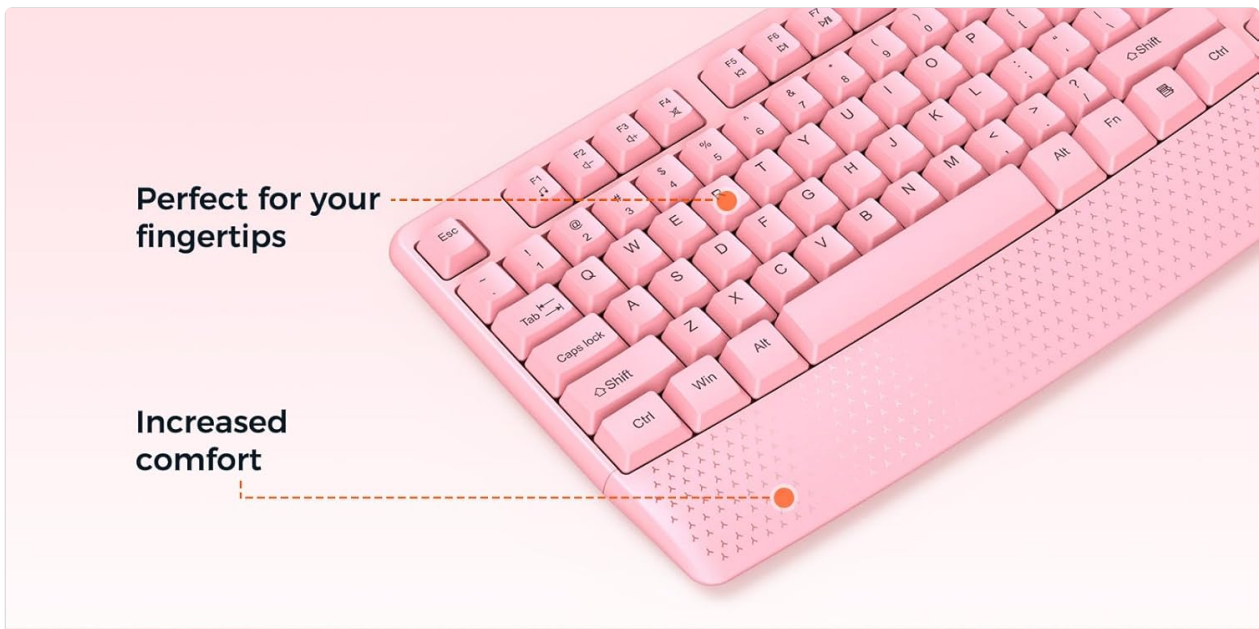


Image: An overhead view of the keyboard and mouse, with labels pointing to various keys and buttons, including multimedia functions and mouse controls.

4.2 Mouse Functions

The mouse is designed for comfortable use and features adjustable DPI settings for customized cursor sensitivity.

- **DPI Adjustment:** Press the DPI button (located behind the scroll wheel) to cycle through 800, 1200, and 1600 DPI settings. This allows you to adjust cursor speed and precision to your preference.
- **Quiet Clicks:** The mouse features quiet click buttons, reducing noise during use.
- **Side Buttons:** Use the forward and backward side buttons for quick navigation in web browsers or other applications.
- **On/Off Switch:** The mouse has an On/Off switch on its underside to conserve battery life when not in use. The keyboard automatically hibernates.



Perfect for your fingertips

Increased comfort



800-1200-1600 DPI

Full size with number pad

Image: A close-up of the mouse highlighting its adjustable DPI settings (800-1200-1600) and the keyboard's integrated wrist rest for increased comfort.



Image: The mouse with a 'no sound' icon, emphasizing its quiet click feature, ideal for quiet environments.

5. MAINTENANCE

To ensure the longevity and optimal performance of your MEETION Wireless Keyboard and Mouse Combo, follow these simple maintenance tips:

- **Cleaning:** Use a soft, dry cloth to wipe down the surfaces of the keyboard and mouse regularly. For

stubborn dirt, slightly dampen the cloth with water or a mild cleaning solution, ensuring no liquid enters the device.

- **Battery Replacement:** Replace batteries when performance degrades or the low battery indicator (if present on the keyboard) illuminates. Always use fresh, high-quality AA batteries.
- **Storage:** When not in use for extended periods, turn off the mouse using its power switch and store the USB receiver inside the mouse to prevent loss.
- **Avoid Extreme Conditions:** Do not expose the devices to extreme temperatures, humidity, or direct sunlight.

6. TROUBLESHOOTING

If you encounter any issues with your keyboard and mouse combo, please refer to the following common solutions:

Problem	Possible Cause	Solution
No response from keyboard/mouse	Low or dead batteries; Receiver not properly connected; Mouse power switch off.	Replace batteries; Ensure receiver is fully plugged into a working USB port; Turn on mouse power switch.
Lagging or intermittent connection	Interference from other wireless devices; Receiver too far from devices.	Move receiver closer to keyboard/mouse; Avoid placing near large metal objects or other 2.4GHz devices.
Mouse cursor erratic or not moving smoothly	Dirty optical sensor; Mouse used on unsuitable surface.	Clean the optical sensor on the mouse's underside; Use on a clean, non-reflective, opaque surface or a mouse pad.
USB-C adapter not working	USB-C adapter used without USB-A receiver.	The USB-C adapter is only an adapter; the USB-A receiver must be plugged into it for functionality.

7. SPECIFICATIONS

- **Brand:** MEETION
- **Model:** MT-C4130
- **Connectivity Technology:** 2.4G Wireless (USB Receiver)
- **Keyboard Dimensions:** 17.44 x 7.3 x 1.1 inches (443 x 185 x 28 mm)
- **Mouse Dimensions:** 4.3 x 2.8 x 1.6 inches (110 x 72 x 40 mm)
- **Item Weight:** Approximately 2.12 pounds (combo)
- **Keyboard Battery:** 1 x AA battery (not included)
- **Mouse Battery:** 1 x AA battery (not included)
- **Mouse DPI Settings:** 800-1200-1600 DPI (Adjustable)
- **Special Features:** Full-size layout, Numeric Keypad, Wrist Rest, Quiet Click Mouse, USB-C Adapter included.
- **Compatible Devices:** PC, Computer, Laptop, Windows, Mac (No Bluetooth connection)



Image: Detailed diagram showing the precise dimensions of both the MEETION wireless keyboard and mouse in inches and millimeters.

8. WARRANTY AND SUPPORT

MEETION products are designed for reliability and performance. For specific warranty details and terms, please refer to the warranty card included with your purchase or visit the official MEETION website. For technical support, product inquiries, or further assistance, please contact MEETION customer service through the contact information provided on the product packaging or the official brand website.

You can also refer to the official User Guide (PDF) available online for additional information [MEETION User Guide \(PDF\)](#)