

WUUK Y0110B

WUUK 2K Wired Video Doorbell with Chime Instruction Manual

Model: Y0110B

Brand: WUUK

INTRODUCTION

Thank you for choosing the WUUK 2K Wired Video Doorbell with Chime. This device provides advanced home security with features such as 2K video resolution, accurate human and motion detection, face recognition, and 24/7 recording capabilities without mandatory subscription fees. This manual will guide you through the installation, operation, and maintenance of your new doorbell system.



Image: The WUUK 2K Wired Video Doorbell unit and its accompanying wireless chime.

WHAT'S IN THE BOX

Please ensure all components are present before beginning installation:

- WUUK 2K Wired Video Doorbell
- WUUK Wireless Chime
- Mounting Bracket
- Wiring Connectors
- Screws and Wall Anchors
- Angle Mounting Wedge (optional, for optimal viewing angle)
- User Manual (this document)

SETUP & INSTALLATION

The WUUK Doorbell requires existing 16-24V AC doorbell wiring. Your existing mechanical or digital chime will be bypassed and will no longer function. The included WUUK wireless chime will serve as your indoor alert.

1. Wiring Requirements:

- Ensure your existing doorbell wiring provides 16-24V AC power.
- Turn off power to your doorbell at the circuit breaker before proceeding.

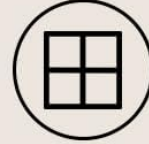
2. Physical Installation:

1. Remove your existing doorbell button.
2. Connect the existing doorbell wires to the terminals on the back of the WUUK Doorbell. Use the provided wiring connectors if necessary.
3. Mount the doorbell to your wall using the provided mounting bracket, screws, and wall anchors. If your doorbell is positioned in a corner or requires an angled view, utilize the included angle mounting wedge.
4. Restore power at the circuit breaker.

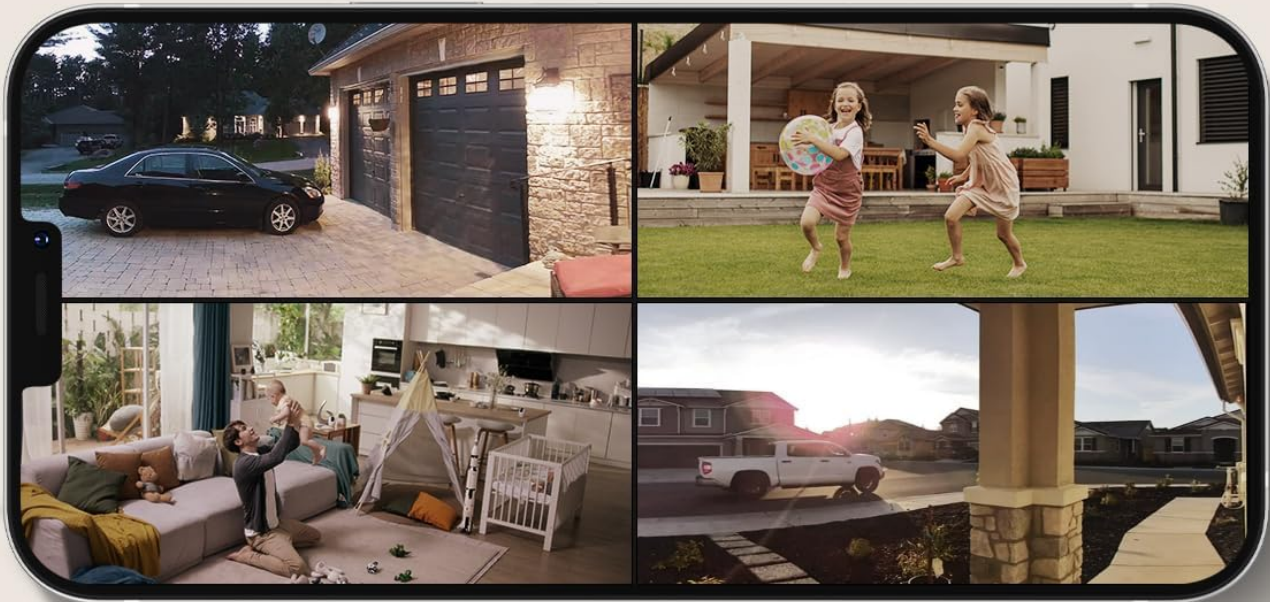
No Blind Points Surveillance



All Angles Security



See 4 Cams



4 WUUK Cameras

Image: Illustration of connecting the WUUK Doorbell to existing 16-24V AC wiring.

3. App Setup & Wi-Fi Connection:

1. Download the WUUK app from your smartphone's app store.
2. Create an account and follow the in-app instructions to add your new WUUK Doorbell.
3. Ensure your Wi-Fi network is 2.4 GHz. The doorbell is compatible with 2.4 GHz Wi-Fi only.
4. Pair the included WUUK wireless chime with the doorbell via the app settings.

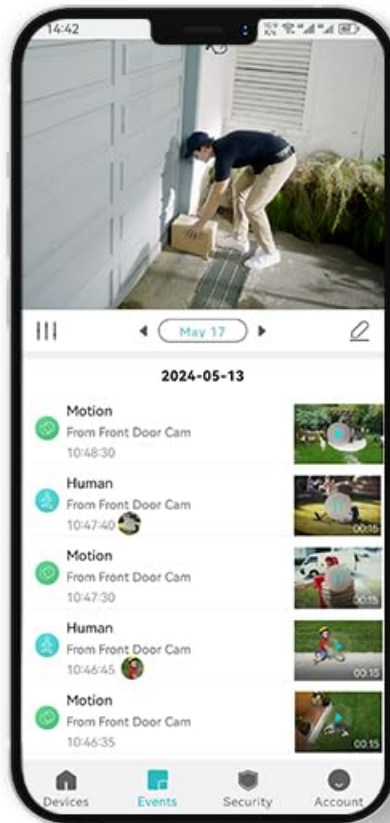


Image: Visual representation highlighting the doorbell's compatibility with 2.4 GHz Wi-Fi networks.

OPERATING INSTRUCTIONS

Live View and Playback:

Access live video feed and review recorded events through the WUUK app. The app provides controls for volume, alarm, and video quality settings.



Image: Screenshot of the WUUK app's live view interface, showing options for volume, alarm, and HD quality.

Two-Way Audio:

Communicate with visitors at your door using the two-way audio feature. You can speak directly through the app or use pre-recorded messages.

Face Recognition & Personalized Greetings:

The doorbell utilizes advanced face recognition technology. Store familiar faces in the app to receive personalized greetings when recognized. If an unrecognized person is detected, the doorbell can sound an alarm. All face profiles are encrypted and stored locally for privacy.

Face Recognition

Know who is ringing the doorbell quickly.



Front Door Doorbell
Jenny is calling

now



Image: A person smiling at the doorbell with "Jenny" and face recognition brackets displayed, indicating the face recognition feature.

Customized Greetings

Set unique greetings for your guests.



Image: A person interacting with the doorbell, which displays a customized greeting message: "I have informed the host, please wait."

Human and Motion Detection:

The doorbell provides highly accurate human and motion detection, minimizing false alerts. You can customize detection zones and sensitivity settings within the app.



Image: A graphic showing a house and yard with a customizable motion detection zone highlighted in blue.

24/7 Recording and Storage:

Choose between continuous 24/7 recording or event-based recording. The doorbell supports local storage via an SD card (up to 256GB, not included) and offers cloud storage options.

24/7 Recording

Everything happens at the door will be recorded.



Image: The doorbell unit on a door, with multiple small video frames swirling around it, illustrating continuous recording.

Wired Installation

Require existing 16-24V AC doorbell wiring or power adapter.



Image: The doorbell and chime units with icons indicating "Up to 256G" (for SD card) and "US Based" (for cloud storage).

Night Vision:

The doorbell is equipped with night vision capabilities, allowing for clear video monitoring even in low-light conditions. Adjustments can be made in the app if needed.

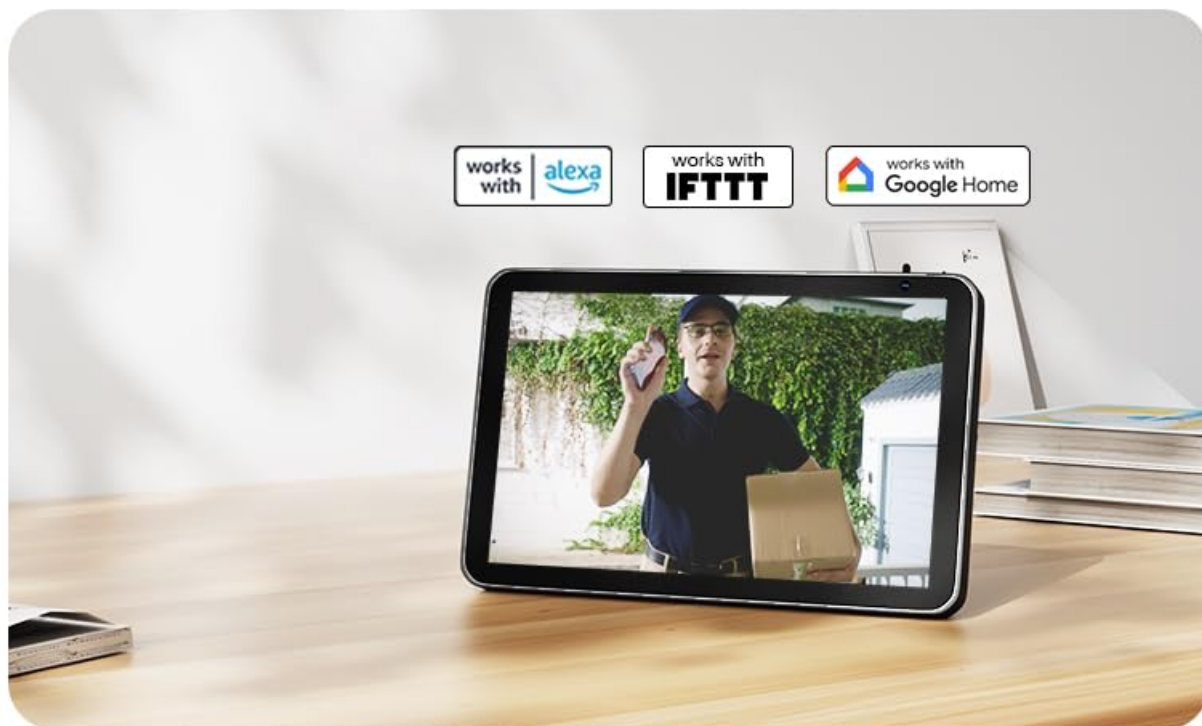


Image: A split image showing a scene in normal light on the left and the same scene in night vision (black and white) on the right, demonstrating the doorbell's night vision capability.

Smart Home Integration:

The WUUK Doorbell is compatible with popular smart home platforms, including Amazon Alexa, Google Home, and IFTTT, allowing for seamless integration into your smart home ecosystem.



Image: A tablet displaying a live feed from the doorbell, with logos for "works with Alexa," "works with IFTTT," and "works with Google Home."

Official Product Video:

Your browser does not support the video tag.

Video: An official product video demonstrating the features and functionality of the WUUK Wired Doorbell Camera with Chime, including its 2K resolution, 24/7 recording, and smart home integration.

MAINTENANCE

- **Cleaning:** Gently wipe the camera lens and doorbell surface with a soft, damp cloth to remove dust and smudges. Avoid abrasive cleaners.
- **Firmware Updates:** Regularly check the WUUK app for available firmware updates to ensure optimal performance and access to new features.
- **SD Card Management:** If using local storage, periodically check the SD card status in the app. Format the SD card as needed to maintain recording efficiency.

TROUBLESHOOTING

- **No Power/Doorbell Not Responding:**
 - Verify that the circuit breaker supplying power to your doorbell wiring is on.
 - Ensure the wiring connections to the doorbell are secure.
 - Confirm your power supply meets the 16-24V AC requirement.
- **Poor Video Quality or Night Vision Issues:**
 - Check your Wi-Fi signal strength at the doorbell's location. A weak signal can affect video streaming.

- Ensure the camera lens is clean and free from obstructions.
- If experiencing issues with night vision, ensure there are no strong light sources directly reflecting into the lens, which can interfere with infrared illumination. Adjusting night vision settings in the app may help.

- **Inaccurate Motion Detection:**

- Adjust the motion detection sensitivity and customize detection zones within the WUUK app to reduce false alerts.
- Ensure the doorbell is mounted at an optimal height and angle.

- **Wi-Fi Connection Issues:**

- Confirm your router is broadcasting a 2.4 GHz Wi-Fi network.
- Move the Wi-Fi router closer to the doorbell or consider a Wi-Fi extender if the signal is weak.
- Restart your router and the doorbell.

- **Performance in Cold Weather:**

- While designed for outdoor use, extreme cold temperatures can sometimes affect electronic devices. Ensure the doorbell is operating within its specified temperature range.

For further assistance, refer to the WUUK app's help section or contact customer support.

SPECIFICATIONS



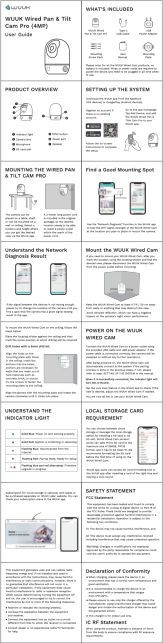

| Feature | Detail |
|-------------------------|--|
| Model Name | Wired Doorbell Camera (Y0110B) |
| Indoor/Outdoor Usage | Outdoor |
| Power Source | Corded Electric (16-24V AC) |
| Connectivity Technology | 2.4 GHz WiFi |
| Compatible Devices | Smartphone |
| Controller Type | Amazon Alexa, Google Assistant, IFTTT |
| Mounting Type | Wall Mount |
| Night Vision Range | 33 Feet |
| Wattage | 10 watts |
| Water Resistance Level | Waterproof (IP65) |
| Alert Type | Motion Only |
| Video Capture Format | MPEG-4 |
| Item Weight | 13.7 ounces |
| Special Features | 2-Way Audio, Easy to Install, Local Recording, Motion Sensor, Night Vision |

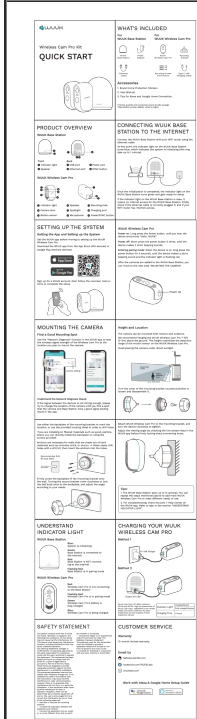
WARRANTY & SUPPORT

For product support, technical assistance, or warranty inquiries, please contact WUUK customer service. Contact information can typically be found within the WUUK app or on the official WUUK website.

You can contact WUUK customer service via call or through the app as mentioned in the product features.

Related Documents - Y0110B

| | |
|---|--|
|  | <p>WUUK Wired Smart Doorbell Pro Installation Guide</p> <p>Comprehensive guide for installing the WUUK Wired Smart Doorbell Pro, covering setup, wiring, mounting, and troubleshooting.</p> |
|  | <p>WUUK Wireless Cam Pro Quick Start Guide</p> <p>A concise guide to setting up and mounting the WUUK Wireless Cam Pro, including base station connection, app setup, and troubleshooting tips.</p> |
|  | <p>WUUK Wired Pan & Tilt Cam Pro (4MP) User Guide Setup, Installation, and Features</p> <p>Comprehensive user guide for the WUUK Wired Pan & Tilt Cam Pro (4MP). Learn how to set up, mount, and use your Wi-Fi home security camera, including indicator light meanings, storage options, and safety information.</p> |
|  | <p>WUUK Wireless Cam Pro and Base Station Setup Guide</p> <p>A comprehensive guide to setting up your WUUK Base Station and Wireless Cam Pro, including installation, connectivity, and indicator light information.</p> |



[WUUK Wireless Cam Pro Kit Quick Start Guide](#)

Quick start guide for the WUUK Wireless Cam Pro Kit, detailing setup, installation, charging, and troubleshooting for your home security cameras.