

Walker 70023

Walker Quiet-Flow SS 70023 Exhaust Muffler Assembly User Manual

Model: Quiet-Flow SS 70023

INTRODUCTION

This user manual provides essential information for the installation, operation, maintenance, and troubleshooting of your Walker Quiet-Flow SS 70023 Direct Fit Exhaust Muffler Assembly. Please read this manual thoroughly before beginning any work to ensure proper installation and safe operation.

The Walker Quiet-Flow SS muffler assemblies are designed as direct-fit OE-style replacements, featuring 100% stainless-steel construction for enhanced durability and longer life compared to typical aluminized mufflers. This product is suitable for both domestic and foreign vehicles.



Image: The Walker Quiet-Flow SS 70023 Direct Fit Exhaust Muffler Assembly, showcasing its stainless steel construction and direct-fit design.

KEY FEATURES

- **100% Stainless Steel Construction:** Engineered with full stainless-steel materials to inhibit corrosion and provide a longer lifespan compared to traditional aluminized mufflers. Features an internal drainage system to minimize moisture accumulation.
- **Premium Acoustic Control:** Incorporates OE-style louvered tubes to effectively reduce noise levels and OE-style domed heads to diminish radiated noise, ensuring a factory-like sound profile.
- **Easy Installation:** Designed as a direct-fit bolt-on replacement, complete with OE-style hangers, brackets, and pipe routings. This design simplifies installation, eliminating the need for specialized fabrication or welding.
- **Durable Construction:** Internal partitions and mechanically joined tubes are designed to accommodate expansion and contraction due to temperature changes, reducing distortion. Spun-locked heads and OE-style spot welds contribute to structural stability and extended service life.
- **Validated Design:** Provides reliable OE-style acoustic performance.

100% STAINLESS-STEEL CONSTRUCTION

The only broad-market muffler with 100% stainless-steel construction that delivers longer life versus aluminized mufflers



Image: Visual representation highlighting the 100% stainless-steel construction of the muffler, emphasizing its corrosion resistance.

PREMIUM ACOUSTIC CONTROL

OE-style louvered tubes lower noise levels while OE-style domed heads helps for premium factory-style sound

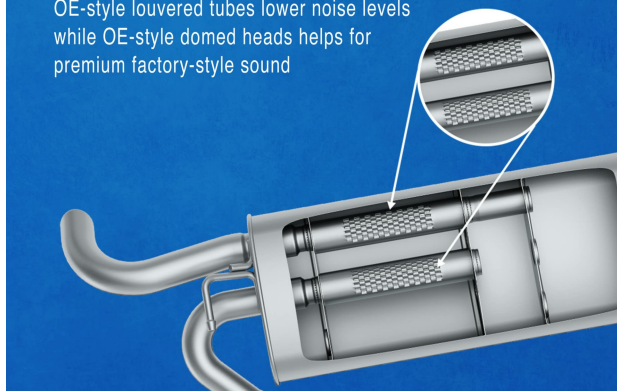


Image: Diagram illustrating the internal louvered tubes and domed heads responsible for premium acoustic control.

BUILT TO LAST

Spun-locked heads and OE-style spot welds help provide structural stability



Image: Close-up view of the muffler's exterior, showing the spun-locked heads and spot welds that contribute to its durability.

EASY TO INSTALL

Direct-fit bolt-on replacement solution with OE-style hangers, pipe routings, and flanges for easy installation that doesn't require specialized fabrication and/or welding

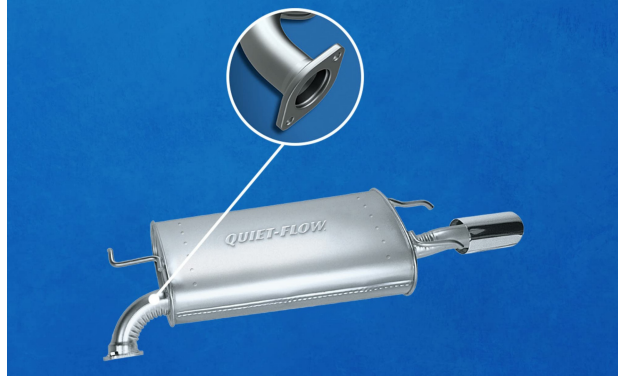


Image: Depiction of the direct-fit bolt-on design, including OE-style hangers and pipe routings for easy installation.

SETUP AND INSTALLATION

The Walker Quiet-Flow SS 70023 muffler assembly is designed for direct bolt-on replacement. While installation is simplified, professional installation is recommended for safety and optimal performance. Always refer to your vehicle's specific service manual for detailed instructions regarding exhaust system removal and installation.

Required Tools and Safety Precautions:

- Appropriate wrenches and sockets for exhaust fasteners.
- Penetrating oil for rusted bolts.
- Exhaust hanger removal tool (optional, but recommended).
- Safety glasses, gloves, and appropriate personal protective equipment.

- Vehicle lift or jack stands to safely elevate the vehicle.
- Always ensure the vehicle is cool before working on the exhaust system.
- Support the exhaust system properly during removal and installation to prevent damage or injury.

Installation Steps (General Guide):

1. Safely lift and secure the vehicle.
2. Locate the existing muffler assembly.
3. Apply penetrating oil to all bolts and hangers.
4. Carefully remove the old muffler assembly, detaching it from connecting pipes and hangers. Note the orientation and connections.
5. Inspect the connecting pipes and hangers for any damage or corrosion. Replace if necessary.
6. Position the new Walker Quiet-Flow SS 70023 muffler assembly.
7. Align the new muffler with the existing exhaust pipes and hangers.
8. Secure all connections using appropriate fasteners. Ensure all clamps and bolts are tightened to manufacturer specifications to prevent leaks.
9. Verify proper clearance from other vehicle components.
10. Lower the vehicle safely.
11. Start the engine and check for any exhaust leaks.

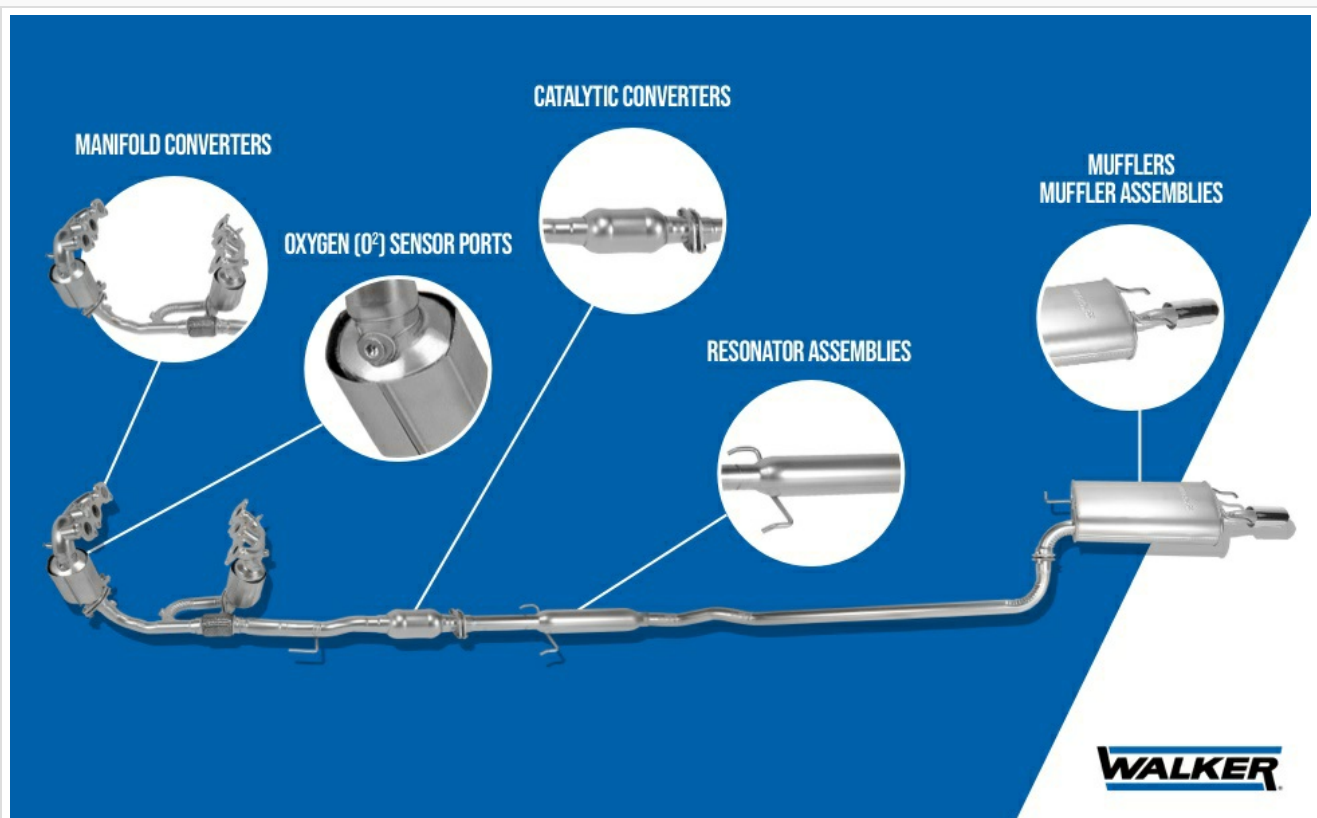


Image: Diagram illustrating a typical vehicle exhaust system, showing the placement of manifold converters, oxygen sensor ports, catalytic converters, resonator assemblies, and muffler assemblies.



Image: An example of an old, rusted muffler that requires replacement.



Image: A person wearing blue gloves working on an exhaust system, demonstrating the hands-on nature of the installation.



Image: Various types of exhaust clamps and fasteners used for securing exhaust components.



Image: Two mechanics collaborating on an exhaust system installation, highlighting the importance of proper technique.

OPERATING CONSIDERATIONS

Once installed, the Walker Quiet-Flow SS 70023 muffler operates as an integral part of your vehicle's exhaust system, designed to reduce engine noise and direct exhaust gases away from the vehicle. No specific user operation is required beyond regular vehicle use.

The stainless-steel construction ensures consistent performance and sound dampening over time. You should expect a factory-like sound profile from your vehicle's exhaust system.

MAINTENANCE

The Walker Quiet-Flow SS 70023 muffler assembly is designed for long-term durability with minimal maintenance. However, periodic inspection of your vehicle's entire exhaust system is recommended to ensure continued optimal performance and safety.

Recommended Maintenance Checks:

- **Visual Inspection:** Periodically inspect the muffler and entire exhaust system for signs of damage, corrosion, cracks, or loose connections. Pay close attention to welds, hangers, and pipe connections.
- **Leak Detection:** Listen for unusual noises, such as hissing or rattling, which may indicate an exhaust leak. Leaks can also be detected by feeling for exhaust gases around connections when the engine is cold.
- **Hanger Integrity:** Ensure all exhaust hangers are intact and securely holding the system in place. Damaged or missing hangers can lead to excessive movement and premature wear.
- **Component Check:** Verify that all associated components, such as catalytic converters, oxygen sensors, and pipes, are in good condition.

Address any issues promptly to prevent further damage to the exhaust system or other vehicle components.

TROUBLESHOOTING

This section provides guidance for common issues that may arise with an exhaust system. If you encounter problems that cannot be resolved using these steps, consult a qualified automotive technician.

Problem	Possible Cause	Solution
Loud exhaust noise / Hissing sound	Exhaust leak (loose connection, crack, hole)	Inspect all connections and the muffler body for leaks. Tighten clamps, replace gaskets, or repair/replace damaged sections.
Rattling or banging noise	Loose exhaust hangers, exhaust system hitting vehicle undercarriage, internal muffler baffle failure	Check and secure all hangers. Ensure adequate clearance between exhaust and vehicle. If internal baffle failure is suspected, muffler replacement may be necessary.
Increased exhaust fumes inside vehicle	Significant exhaust leak, especially near the passenger compartment	Immediately inspect and repair any exhaust leaks. This is a serious safety concern due to carbon monoxide.

Problem	Possible Cause	Solution
Muffler appears rusted prematurely	External factors (road salt, harsh chemicals), extreme operating conditions, manufacturing defect (unlikely with stainless steel)	While stainless steel resists corrosion, extreme conditions can still affect it. Ensure proper drainage. If severe, contact support.

SPECIFICATIONS

Attribute	Detail
Brand	Walker
Model Name	Quiet-Flow SS
Item Model Number	70023
Construction Material	100% Stainless Steel
Item Weight	12 pounds
Product Dimensions (L x W x H)	37 x 17 x 17 inches
Vehicle Service Type	Car
UPC	086387700238
Manufacturer	DRiV Incorporated

What's in the Box:

- One Muffler Assembly

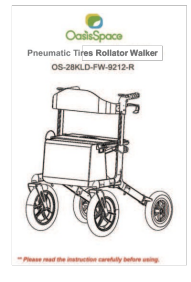
WARRANTY AND SUPPORT

For specific warranty information regarding your Walker Quiet-Flow SS 70023 Direct Fit Exhaust Muffler Assembly, please refer to the warranty documentation provided with your purchase or visit the official Walker website. Warranty terms typically cover defects in materials and workmanship under normal use.

For technical support, installation assistance, or warranty claims, please contact Walker customer service or your authorized dealer. Ensure you have your product model number (70023) and purchase details available when contacting support.

Manufacturer: DRiV Incorporated

For the most up-to-date contact information, please visit the official Walker brand website.

 <p>HEAO Rollator Walker with Seat Instruction Manual</p> <p>HEAO</p> <p>Note: Please read the instruction carefully before using.</p>	<p>HEAO Rollator Walker with Seat Instruction Manual</p> <p>Comprehensive instruction manual for the HEAO Rollator Walker with Seat, detailing part lists, assembly, folding, braking, and height adjustment.</p>
 <p>HEAO Rollator Walker with Seat Instruction Manual</p> <p>HEAO</p> <p>Note: Please read the instruction carefully before using.</p>	<p>HEAO Rollator Walker with Seat - Instruction Manual</p> <p>Comprehensive instruction manual for the HEAO Rollator Walker with Seat, detailing parts, assembly, folding, braking, handle height adjustment, and important safety notes for optimal use.</p>
 <p>TINY STEPS ROADSTER 2-in-1 Activity Walker</p> <p>Kolcraft</p>	<p>Kolcraft Tiny Steps Roadster 2-in-1 Activity Walker: Assembly, Safety, and Use Guide</p> <p>This guide provides comprehensive instructions for the Kolcraft Tiny Steps Roadster 2-in-1 Activity Walker. It covers important safety information, assembly steps, parts list, care and maintenance, seat height adjustment, and conversion to a walk-behind walker.</p>
 <p>OasisSpace Upright Rollator Walker (OS-9223L) Instruction Manual</p> <p>Please read the instruction carefully before using.</p>	<p>OasisSpace Upright Rollator Walker (OS-9223L) Instruction Manual</p> <p>Instruction manual for the OasisSpace Upright Rollator Walker, model OS-9223L. Includes product overview, package contents, assembly instructions, safety precautions, cleaning and storage guidelines, product specifications, and limited warranty information.</p>
 <p>OasisSpace Pneumatic Tires Rollator Walker OS-28KLD-FW-9212-R</p> <p>Please read the instruction carefully before using.</p>	<p>OasisSpace Pneumatic Tires Rollator Walker OS-28KLD-FW-9212-R User Manual</p> <p>Comprehensive user manual for the OasisSpace Pneumatic Tires Rollator Walker (Model OS-28KLD-FW-9212-R). Includes setup instructions, operating guidelines, safety precautions, cleaning, storage, and warranty information.</p>

