

## Polti 161791.322A01

# Polti Thermostat Thermofusible Instruction Manual

Model: 161791.322A01

## INTRODUCTION

This manual provides essential information for the Polti original replacement dual thermostat and thermofuse, part number 161791.322A01. This component is designed for use in various Polti Vaporetto and Vaporella steam generator and iron models. It functions as a critical safety and temperature regulation device, ensuring the safe and efficient operation of your appliance.

## PRODUCT IDENTIFICATION

The Polti dual thermostat thermofusible is identified by part number 161791.322A01. This part combines both a thermostat and a thermofuse into a single unit.

To ensure compatibility, locate the identification plate on your Polti appliance, which is generally found on the underside. Verify your appliance's specific model number against the list of compatible models provided in this manual.

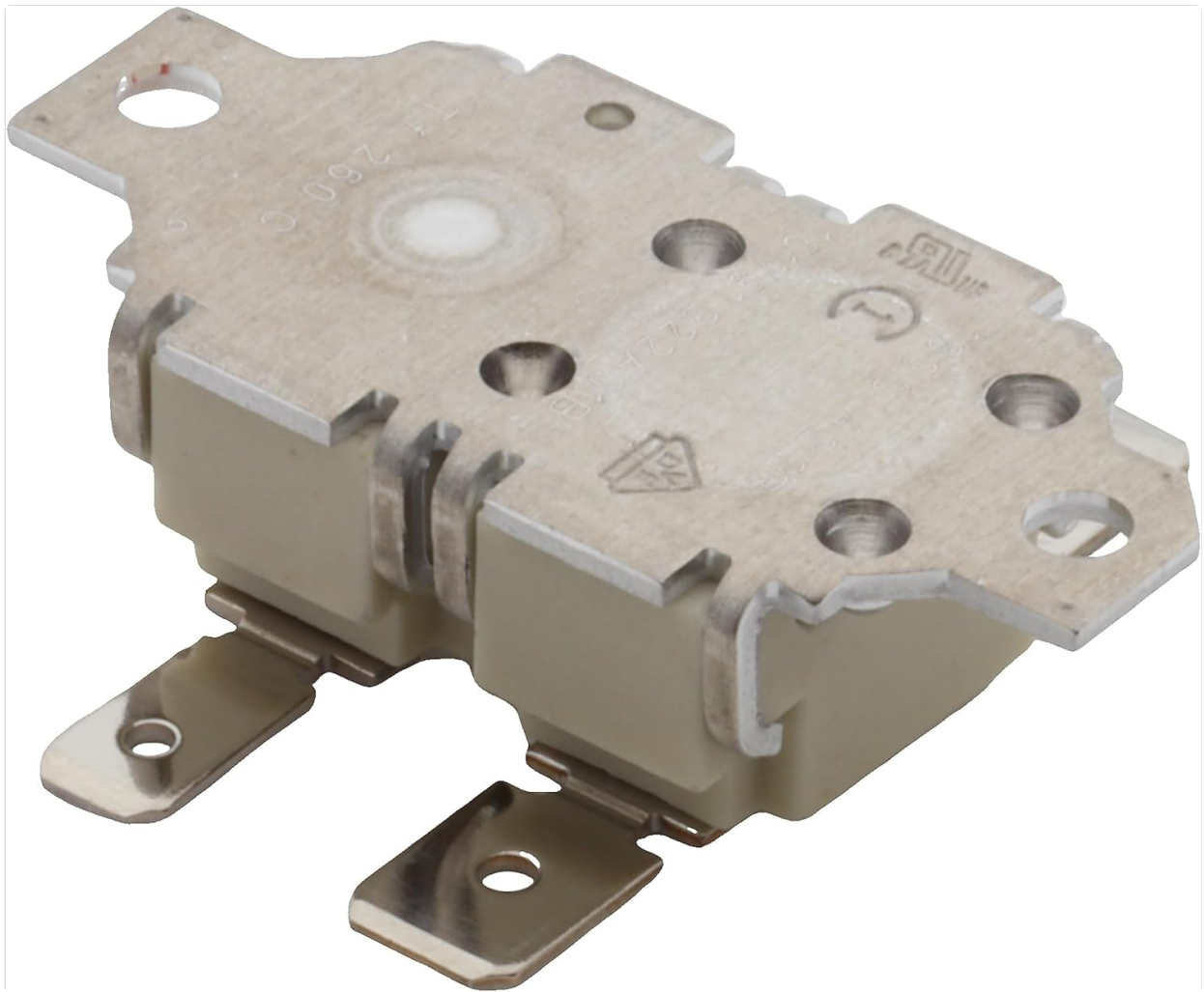


Image: Rear view of the Polti dual thermostat thermofusible, displaying the part number 161791.322A01 and temperature ratings.

## TECHNICAL SPECIFICATIONS

---

- **Part Number:** 161791.322A01
- **Thermostat Activation Temperature:** 180°C
- **Thermofusible Activation Temperature:** 260°C
- **Component Type:** Dual Thermostat and Thermofuse
- **Approximate Weight:** 10 grams
- **Approximate Dimensions:** 4.5 x 3.5 x 1.5 cm

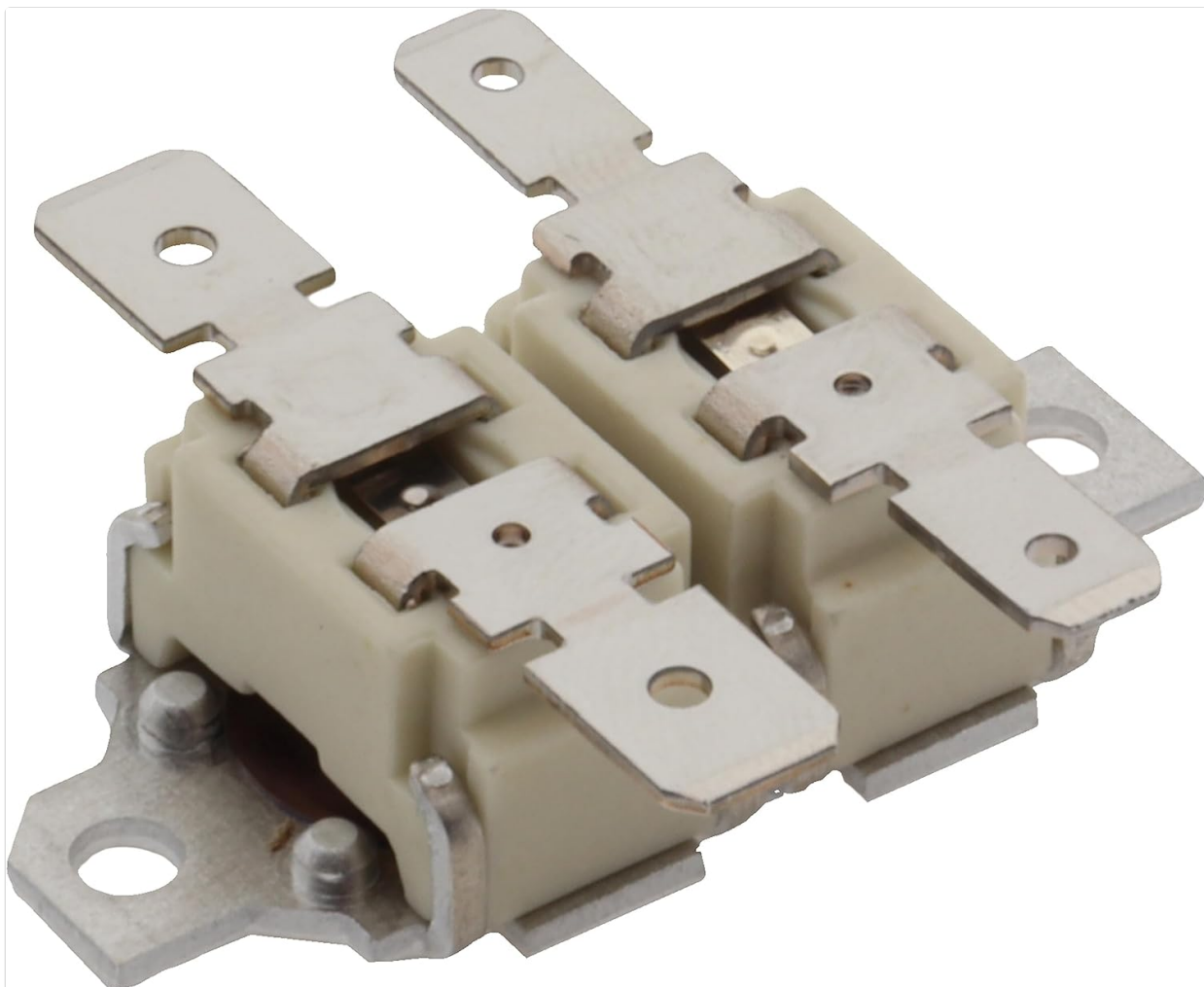


Image: Front view of the Polti dual thermostat thermofusibile, illustrating its compact design with two beige rectangular units and multiple metal terminals.

## COMPATIBLE POLTI APPLIANCE MODELS

---

This replacement part is compatible with the following Polti Vaporetto and Vaporella models. Please verify your appliance's model number before purchase and installation.

- PBEU0079 UNICO MCV20 ALLERGY MULTIFLOOR
- PLeu0057 Vaporella Forever 1000
- PLeu0068 Vaporella Forever 900
- PLeu0075 Vaporella Forever 905
- PLEU0096 Vaporella Forever 900 Inox
- PLeu0107 Vaporella Forever 950
- PLeu0117 Vaporella Power System
- PLEU0154.01 Vaporella Forever 700
- PLEU0158.01 Vaporella Forever 800
- PLEU0224 LA Vaporella XB50R
- PLEU0225 LA Vaporella XB60C
- PLEU0226 LA Vaporella XM80R
- PLEU0227 LA Vaporella XM80C
- PLEU0228 LA Vaporella XT100C
- PLEU0229 LA Vaporella XM82C

- PLEU0232 Vaporella Next VN18.10
- PLEU0233 Vaporella Next VN18.15
- PLEU0236 Vaporella Next VN18.30
- PLEU0237 Vaporella Next VN18.35
- PLEU0247 LA Vaporella XT90C
- PLEU0248 LA Vaporella XT110C
- PLEU0262 LA Vaporella XM84C
- PLEU0263 LA Vaporella XT120C
- PVEU0081 LECOASPIRA FAV20
- PVEU0082 LECOASPIRA FAV30

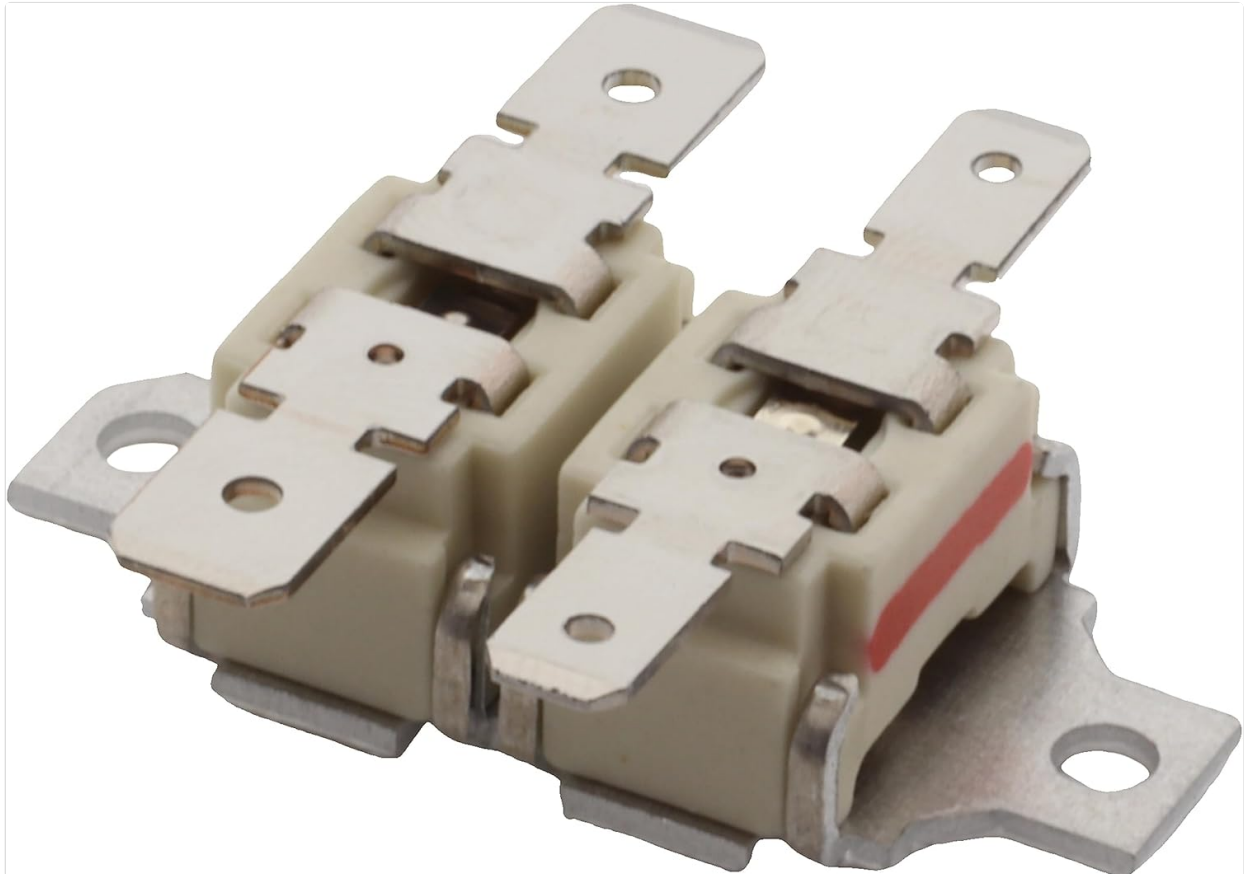


Image: Side view of the Polti dual thermostat thermofusibile, highlighting the metal mounting tabs and electrical terminals for connection.

## INSTALLATION GUIDELINES

**This component is an electrical safety device. Installation should only be performed by a qualified technician or an individual with appropriate electrical repair experience. Incorrect installation can lead to appliance malfunction, electrical hazards, or personal injury.**

### General Steps (Consult your appliance's service manual for detailed instructions):

1. **Safety First:** Always disconnect the appliance from the main power supply before attempting any repair or installation. Ensure the appliance is cool.
2. **Access:** Carefully open the appliance casing to access the existing thermostat/thermofuse assembly. Refer to your appliance's specific service manual for instructions on how to safely open the casing.
3. **Removal:** Note the exact orientation and wiring connections of the old component. Take photographs if

necessary. Disconnect all wires and carefully unmount the old part.

4. **Replacement:** Mount the new Polti dual thermostat thermofusible (161791.322A01) in the identical position and connect the wires securely, ensuring correct polarity and connections as noted during removal.
5. **Reassembly:** Close the appliance casing, ensuring all screws are tightened and no wires are pinched or damaged during the process.
6. **Testing:** After reassembly, perform a functional test of the appliance according to the manufacturer's guidelines to confirm proper operation and safety.

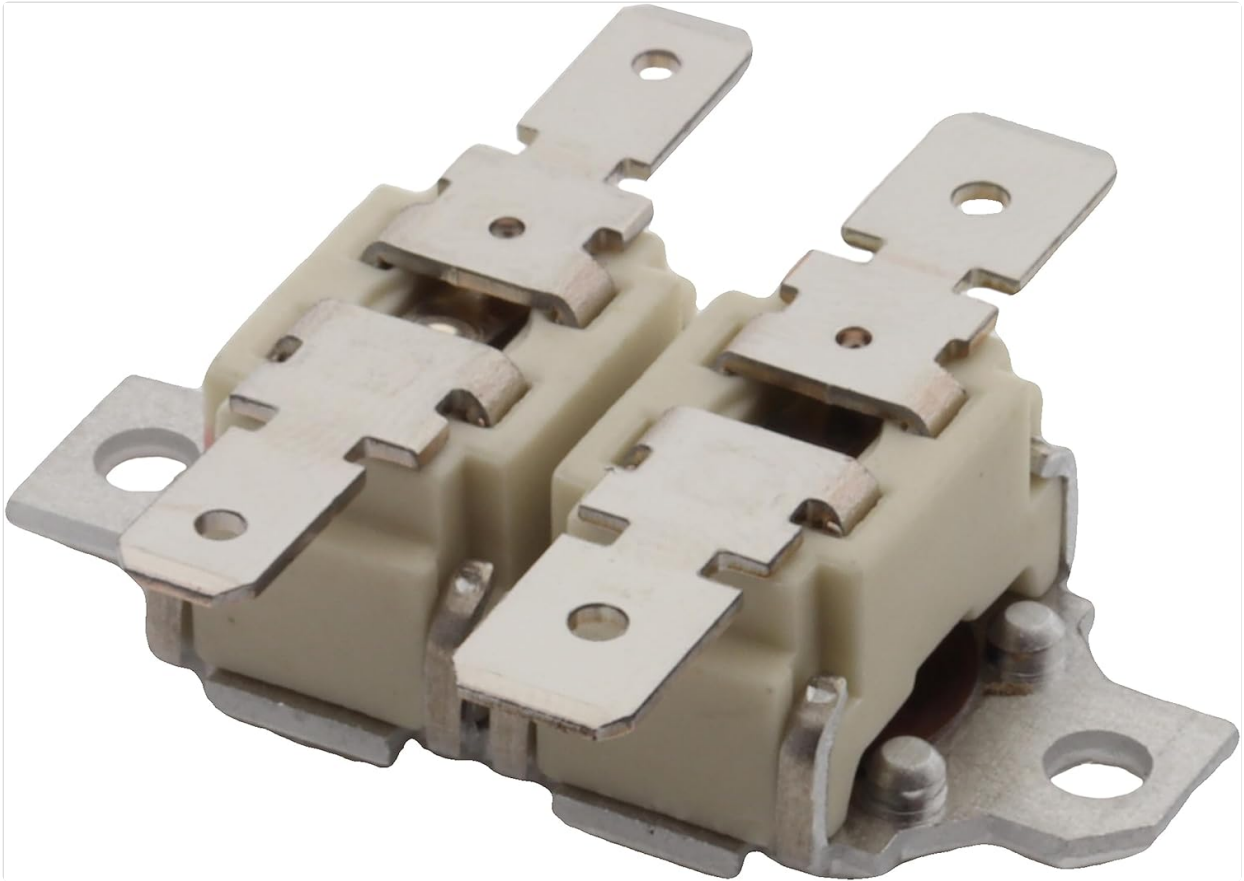


Image: Another side view of the Polti dual thermostat thermofusible, showcasing its robust construction and multiple connection points.

## COMPONENT FUNCTION

---

The dual thermostat thermofusible serves two primary functions within your Polti steam appliance:

- **Thermostat (180°C):** This component actively regulates the operating temperature of the appliance, ensuring it reaches and maintains the optimal temperature for steam generation. It prevents the appliance from exceeding safe operating temperatures during normal use.
- **Thermofuse (260°C):** This is a non-resettable, single-use safety device. If the primary thermostat fails and the temperature continues to rise beyond safe limits (260°C), the thermofuse will permanently break the electrical circuit. This action prevents further overheating, potential damage to the appliance, and reduces fire hazards. Once activated, the thermofuse must be replaced.

This integrated dual system provides a critical layer of safety and temperature control for your Polti appliance.

## MAINTENANCE

---



The Polti dual thermostat thermofusible is a sealed, non-serviceable component and does not require routine user maintenance. Its function is to operate reliably within the appliance's electrical system as a safety and control device.

If the appliance exhibits signs of inconsistent heating, failure to heat, or repeated tripping of safety mechanisms, it may indicate a fault with the thermostat or thermofuse. In such cases, professional inspection and replacement of the component are recommended.

## TROUBLESHOOTING

As a safety and temperature control component, the thermostat/thermofuse itself is not typically 'troubleshoot' by the end-user. If your Polti appliance is experiencing issues related to heating or power, consider the following:

- **No Heat/No Power:** If the appliance does not heat up or receive power, and other electrical components are confirmed functional, the thermofuse may have activated due to an over-temperature event. This requires replacement of the component.
- **Inconsistent Heating:** If the appliance heats intermittently or fails to maintain a consistent temperature, the thermostat portion of the component may be faulty.
- **Overheating:** If the appliance becomes excessively hot or emits burning smells, immediately disconnect it from power. This could indicate a thermostat failure, and the thermofuse is the last line of defense.

**For any of these issues, it is strongly advised to consult a qualified service technician. Do not attempt to bypass or repair a faulty thermostat or thermofuse, as this can create significant safety hazards.**

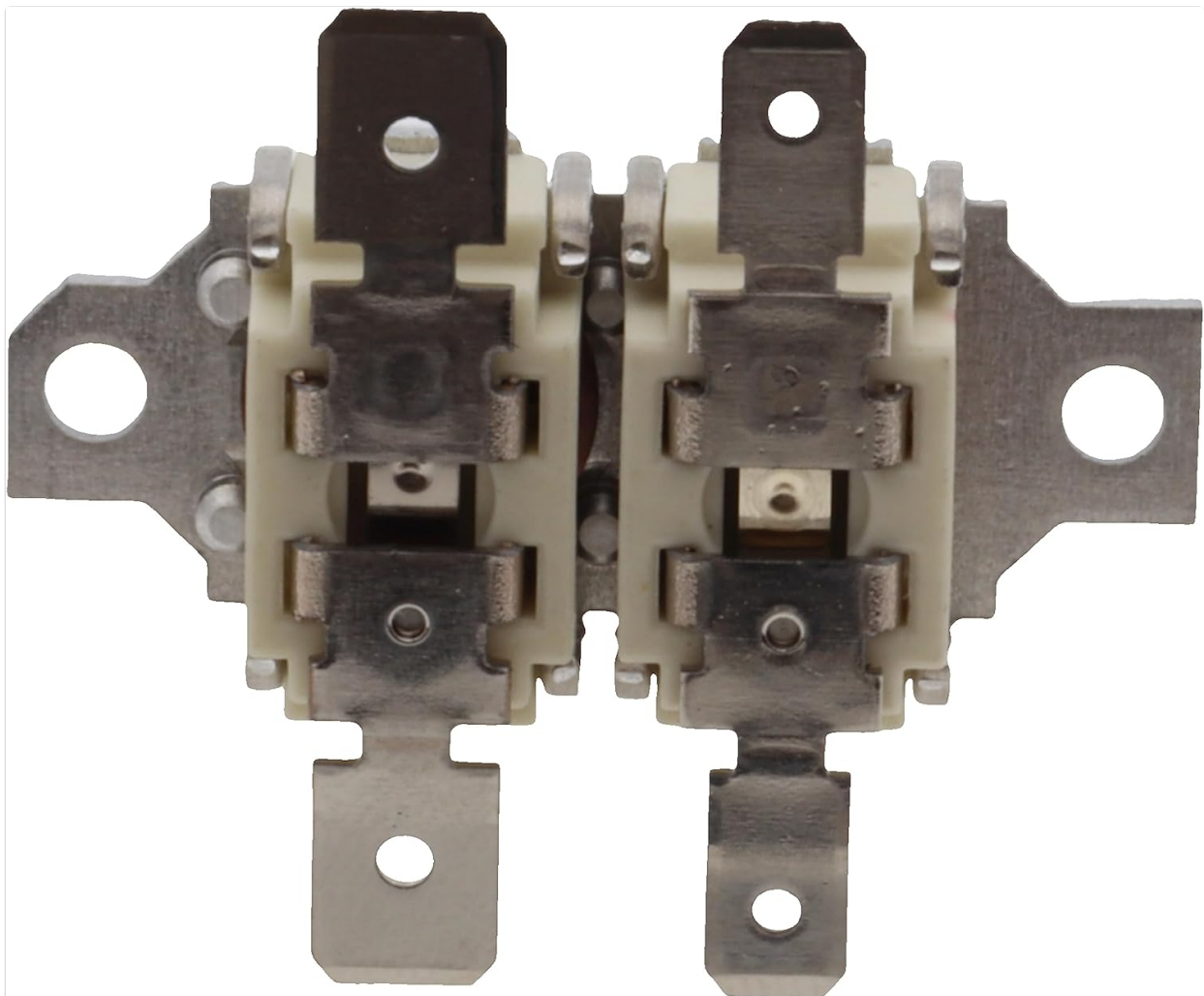


Image: Top-down view of the Polti dual thermostat thermofusible, illustrating the compact arrangement of the two units and

their various terminals.

## IMPORTANT SAFETY INFORMATION

- **Electrical Hazard:** Always disconnect the appliance from the main power supply and allow it to cool completely before handling any internal components.
- **Professional Installation:** Due to the electrical nature and safety-critical function of this part, installation should be performed by a qualified professional or an experienced individual.
- **Genuine Parts:** Use only genuine Polti replacement parts to ensure proper function, compatibility, and safety.
- **Do Not Bypass:** Never attempt to bypass, modify, or repair a faulty thermostat or thermofuse. These are essential safety devices designed to prevent serious hazards.
- **Disposal:** Dispose of old electrical components responsibly according to local environmental regulations.

Failure to follow these safety guidelines can result in electric shock, fire, appliance damage, or other serious injury.

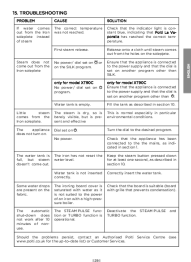

## SUPPORT AND WARRANTY

This product is an original Polti replacement part. For technical support, service, or warranty inquiries regarding your Polti appliance, please refer to the official Polti website or contact Polti customer service directly.

Information regarding the availability of spare parts for this specific component is currently unavailable from the manufacturer.

For further assistance with your purchase, you may also contact the seller, PG Service, through the Amazon platform.

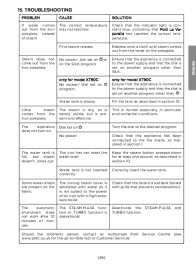
### Related Documents - 161791.322A01

	<p><a href="#">Polti La Vaporella XT90C Troubleshooting Guide: Common Issues and Solutions</a></p> <p>Find solutions to common problems with your Polti La Vaporella XT90C steam iron, including issues with steam output, water leaks, and appliance power. This guide helps resolve common troubleshooting scenarios.</p>
	<p><a href="#">Polti Vaporetto Smart Series Instruction Manual   Cleaning Guide</a></p> <p>Comprehensive instruction manual for Polti Vaporetto Smart steam cleaners (Smart 100B, 100T, 110 ECO, 120). Learn about setup, operation, cleaning various surfaces, maintenance, and warranty.</p>



[Polti Vaporetto Pro Series Steam Cleaner Instruction Manual](#)

Comprehensive instruction manual for Polti Vaporetto Pro 100\_ECO POWER, Pro 95\_TURBO FLEXI, and Pro 85\_FLEXI steam cleaners. Includes setup, usage, cleaning guides, and warranty information.



[Polti La Vaporella XT90C Troubleshooting Guide](#)

Troubleshoot common issues with your Polti La Vaporella XT90C steam generator iron, covering steam output, power, and automatic shut-down features.



[Polti Vaporetto Lecoaspira Genius User Manual and Operating Guide](#)

Comprehensive user manual for the Polti Vaporetto Lecoaspira Genius steam cleaner and vacuum, covering features, operation, accessories, safety, and troubleshooting.



[Polti Vaporetto ECO PRO 3000 Steam Cleaner User Manual and Instructions](#)

Comprehensive user manual for the Polti Vaporetto ECO PRO 3000 steam cleaner, covering safety precautions, operating instructions, accessory use, maintenance, and troubleshooting. Learn how to effectively use your steam cleaner for various household tasks.