

TC17

Generic TC17 4G LTE Cellular Trail Camera with Solar Panel User Manual

Model: TC17

1. INTRODUCTION

This manual provides detailed instructions for the setup, operation, maintenance, and troubleshooting of your Generic TC17 4G LTE Cellular Trail Camera with Solar Panel. Please read this manual thoroughly before using the device to ensure proper functionality and to prevent damage.

2. SAFETY INFORMATION

- Do not expose the camera or solar panel to extreme temperatures or direct flame.
- Ensure all connections are secure before operation.
- Keep the device away from children.
- Use only approved accessories and power sources.
- Do not attempt to disassemble or modify the camera or solar panel, as this will void the warranty and may cause damage.

3. PACKAGE CONTENTS

Verify that all items are present in your package:

- TC17 4G LTE Cellular Trail Camera
- Solar Panel
- SIM Card (pre-installed or included separately)
- Mounting Strap/Bracket
- USB Charging Cable
- User Manual

4. PRODUCT OVERVIEW

The TC17 is a 4G LTE cellular trail camera designed for remote monitoring. It features a solar panel for continuous power, pan and tilt capabilities, night vision, and motion detection.

4G Cellular Trail Camera

Come with a **SIM** Card,support Verizon,AT&T,T-Mobile Network
Please recharge amount of date after 100 RMB(7 days)cellular data is used up
Do **not** support **5G** signal.
Support **SD** card(Not included)&One month free trail of cloud storage



Figure 1: TC17 4G LTE Cellular Trail Camera with integrated solar panel. The image highlights the camera's cellular capability, support for SIM and SD cards, and includes a note about 5G signal incompatibility.

No Wifi Needed & **100%** Wireless



Figure 2: Various application scenarios for the TC17 camera, including construction sites, motorhomes, forest cabins, wildlife studies, campsites, and boats, emphasizing its wireless operation without Wi-Fi.

5. SETUP

5.1. SIM Card and SD Card Installation

1. Locate the SIM card slot and SD card slot on the camera body.
2. Insert the provided 4G LTE SIM card into the SIM card slot. Ensure it is correctly oriented.
3. Insert a compatible SD card (not included, up to 128GB recommended) into the SD card slot for local storage of recordings.

5.2. Initial Charging and Solar Panel Connection

1. Before first use, fully charge the camera's internal 8000mAh battery using the provided USB cable and a standard USB power adapter.
2. Connect the solar panel cable to the designated charging port on the camera.
3. Position the solar panel in an area that receives maximum direct sunlight for optimal charging.

5.3. App Installation and Device Pairing

1. Download the companion mobile application (compatible with Android devices) from your

smartphone's app store.

2. Create an account and follow the in-app instructions to add your TC17 camera. This typically involves scanning a QR code on the camera or entering its device ID.
3. Ensure your smartphone has an active internet connection during the pairing process.

5.4. Mounting the Camera

1. Select a suitable location for mounting, such as a tree or wall, ensuring a clear view of the desired monitoring area.
2. Use the provided mounting strap or bracket to securely attach the camera and solar panel.
3. Adjust the camera's angle to cover the target area.

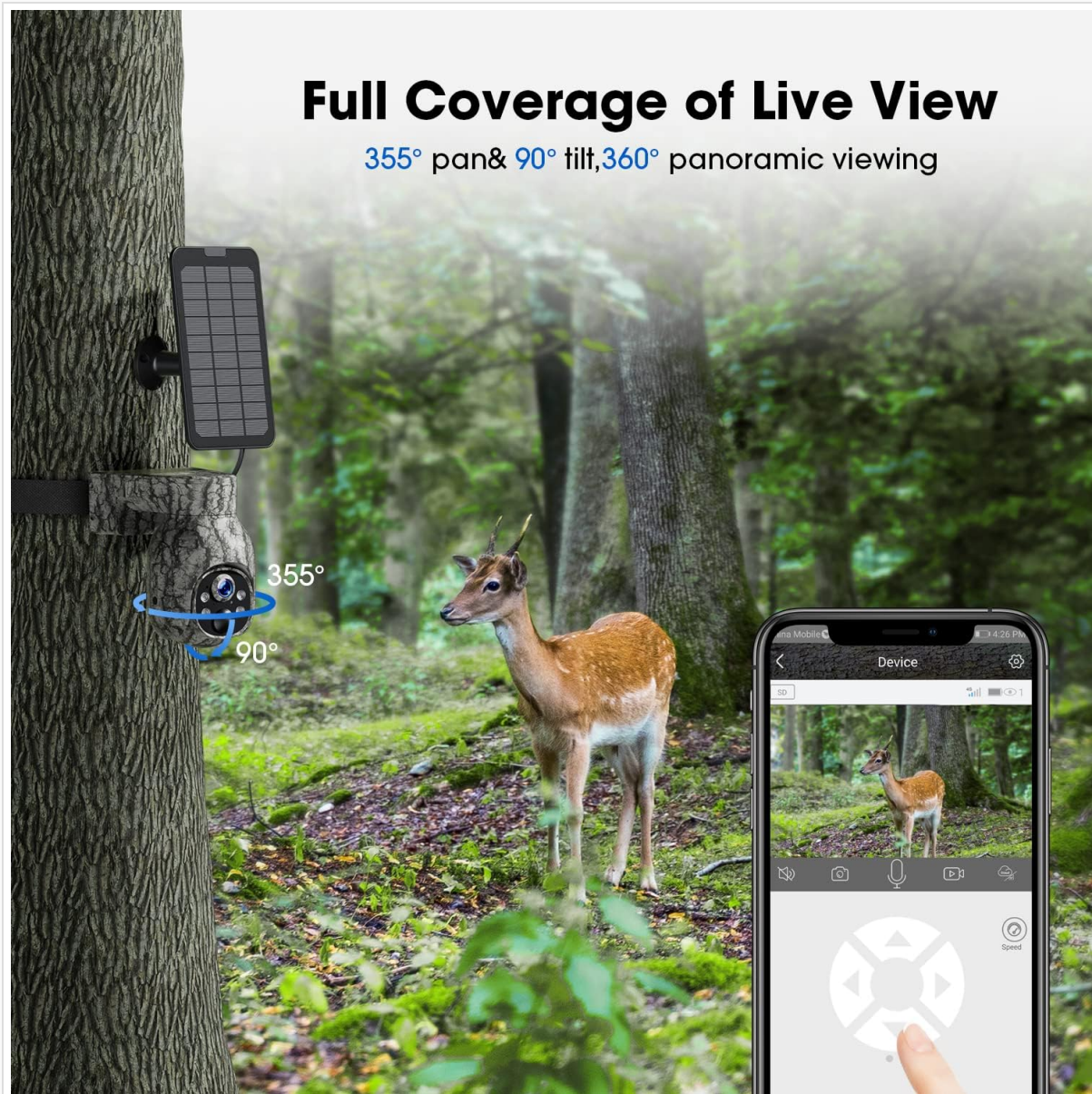


Figure 3: The TC17 camera mounted on a tree, illustrating its 355° pan and 90° tilt capabilities for full coverage live viewing, controlled via a smartphone application.

6. OPERATING INSTRUCTIONS

6.1. Powering On/Off

Press and hold the power button (location specified in product diagram, if available) for a few seconds to turn the camera on or off. The camera will automatically power on when connected to a charged solar

panel or external power source.

6.2. Live View and Pan/Tilt Control

1. Open the mobile application and select your TC17 camera.
2. Tap on the live view option to stream real-time 2K video.
3. Use the on-screen controls to pan the camera horizontally up to 355° and tilt vertically up to 90°.

6.3. Motion Detection and Alerts

The camera is equipped with motion detection. When motion is detected, the camera will record video and send an alert to your smartphone via the app. Sensitivity settings can be adjusted within the application.

6.4. Night Vision

The TC17 automatically switches to night vision mode in low-light conditions, providing clear black and white images and video.

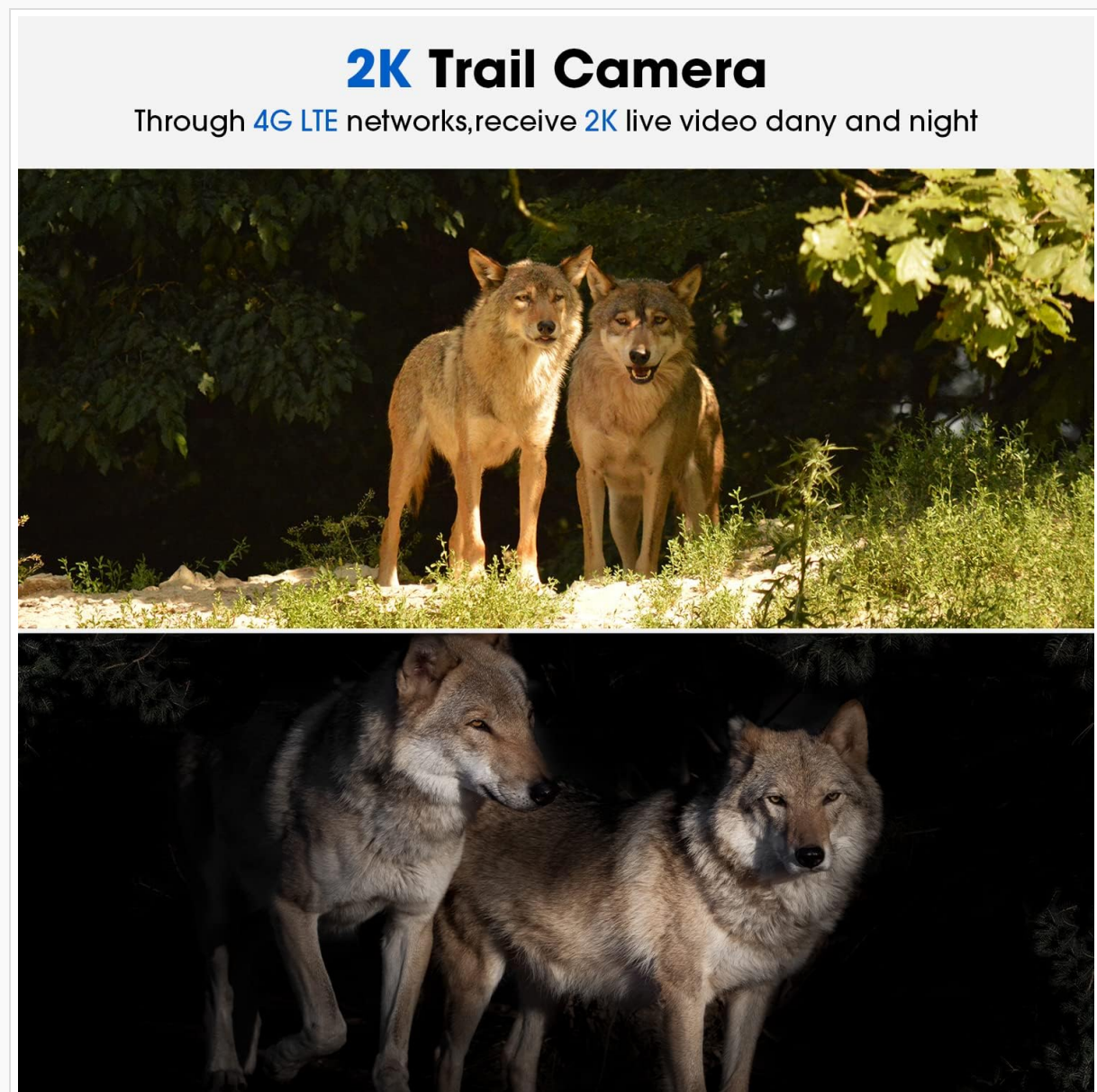


Figure 4: Comparison of 2K live video quality during daytime and nighttime, demonstrating the camera's night vision capabilities.

6.5. Cloud Storage and Data Usage

The camera supports cloud storage (one month free trial included). Cellular data usage is required for live view, alerts, and cloud uploads. Monitor your data plan to avoid interruptions. Recharging cellular data may

be necessary after initial usage limits are reached.

7. MAINTENANCE

7.1. Cleaning

Wipe the camera lens and solar panel surface with a soft, dry cloth to remove dust and debris. Do not use harsh chemicals or abrasive materials.

7.2. Solar Panel Care

Regularly check the solar panel for obstructions (e.g., leaves, dirt) that may reduce its charging efficiency. Ensure it remains positioned to receive maximum sunlight.



Figure 5: The solar panel providing continuous power to the camera, highlighting the 8000mAh battery and 4W solar panel for extended operation.

7.3. Firmware Updates

Check the mobile application periodically for available firmware updates. Keeping the firmware updated ensures optimal performance and access to new features.

7.4. Weather Resistance

The camera is rated IP66 waterproof and dustproof, designed to withstand various outdoor environments. However, avoid submerging the device in water.

IP66 Waterproof & Dustproof

IP66 waterproof, no fear of bad environments



Figure 6: The TC17 camera and solar panel in a rainy environment, demonstrating its IP66 waterproof and dustproof rating for outdoor use.

8. TROUBLESHOOTING

- **Camera not powering on:** Ensure the battery is charged and the solar panel is connected and receiving sunlight. Check the power button.
- **No cellular signal:** Verify the SIM card is correctly installed and active. Check cellular network coverage in the camera's location. The camera supports 4G LTE, not 5G.
- **No live view or alerts:** Confirm the camera has a stable cellular connection. Check your mobile app settings for notifications. Ensure your data plan is active and not exhausted.
- **Motion detection not working:** Adjust motion detection sensitivity in the app. Ensure the camera's view is clear of obstructions.
- **Poor image/video quality:** Clean the camera lens. Ensure sufficient lighting for optimal night vision performance.

9. SPECIFICATIONS

Feature	Detail
Model Number	TC17
Connectivity Technology	Wireless (4G LTE)
Power Source	Battery Powered, Solar (8000mAh battery, 4W solar panel)
Video Capture Resolution	2K
Pan/Tilt Range	Pan 355°, Tilt 90°
Special Features	Motion Sensor, Night Vision, Live View
Weather Resistance	IP66 Waterproof & Dustproof
Compatible Devices	Smartphone (Android controller type)
Storage	SD Card (not included), Cloud Storage
Product Dimensions	6 x 4.8 x 8 inches
UPC	793032832205

10. WARRANTY AND SUPPORT

For warranty information and technical support, please refer to the documentation provided at the time of purchase or contact the seller/manufacturer directly. The manufacturer of this product is lisiyiyi.