

Allteq ALTQ-TM-165

Allteq TV/Screen Wall Mount with Arm

USER MANUAL

Model: ALTQ-TM-165

Introduction

Thank you for choosing the Allteq TV/Screen Wall Mount. This manual provides essential information for the safe and proper installation, operation, and maintenance of your new wall mount. Please read this manual thoroughly before installation and keep it for future reference.

This wall mount is designed to securely hold flat-panel displays ranging from 23 to 42 inches and weighing up to 30 kg. Its articulated arm allows for versatile adjustments including swivel, tilt, and extension, providing optimal viewing angles from various positions in your room. It is compatible with VESA mounting patterns 50x50mm, 75x75mm, 100x100mm, and 200x200mm.

Safety Information

WARNING: Improper installation or use of this product can result in serious personal injury or damage to the product or property. Allteq is not responsible for any damage or injury caused by incorrect installation, incorrect assembly, or incorrect use.

- Ensure the mounting surface can safely support the combined weight of the mount and the display.
- Always use appropriate tools and follow all installation instructions carefully.
- Do not exceed the maximum weight capacity of 30 kg (66 lbs).
- Do not exceed the maximum screen size of 42 inches.
- This product is intended for indoor use only.
- Keep children and pets away during installation.
- If you are unsure about any part of the installation process, consult a qualified professional.

Package Contents

Please check to ensure all components are present and undamaged. If any parts are missing or damaged, contact your retailer for assistance.

- Wall Mount Assembly (Main Arm and VESA Plate)
- Wall Mounting Hardware (Screws, Anchors)
- TV Mounting Hardware (Various VESA Screws, Spacers, Washers)
- Instruction Manual

Specifications

Feature	Detail
Brand	Allteq
Model Number	ALTQ-TM-165
Compatible Screen Size	23 - 42 inches
Maximum Weight Capacity	30 kg (66 lbs)
VESA Compatibility	50x50mm, 75x75mm, 100x100mm, 200x200mm
Wall Distance (Adjustable)	10.1 cm - 46.3 cm
Movement Type	Swivel, Tilt
Maximum Tilt Angle	Adjustable Tilt
Color	Black
Material	Metal

Setup and Installation

Important: Before beginning installation, ensure you have all necessary tools and that the wall structure is suitable for mounting. It is highly recommended to have two people for installation.

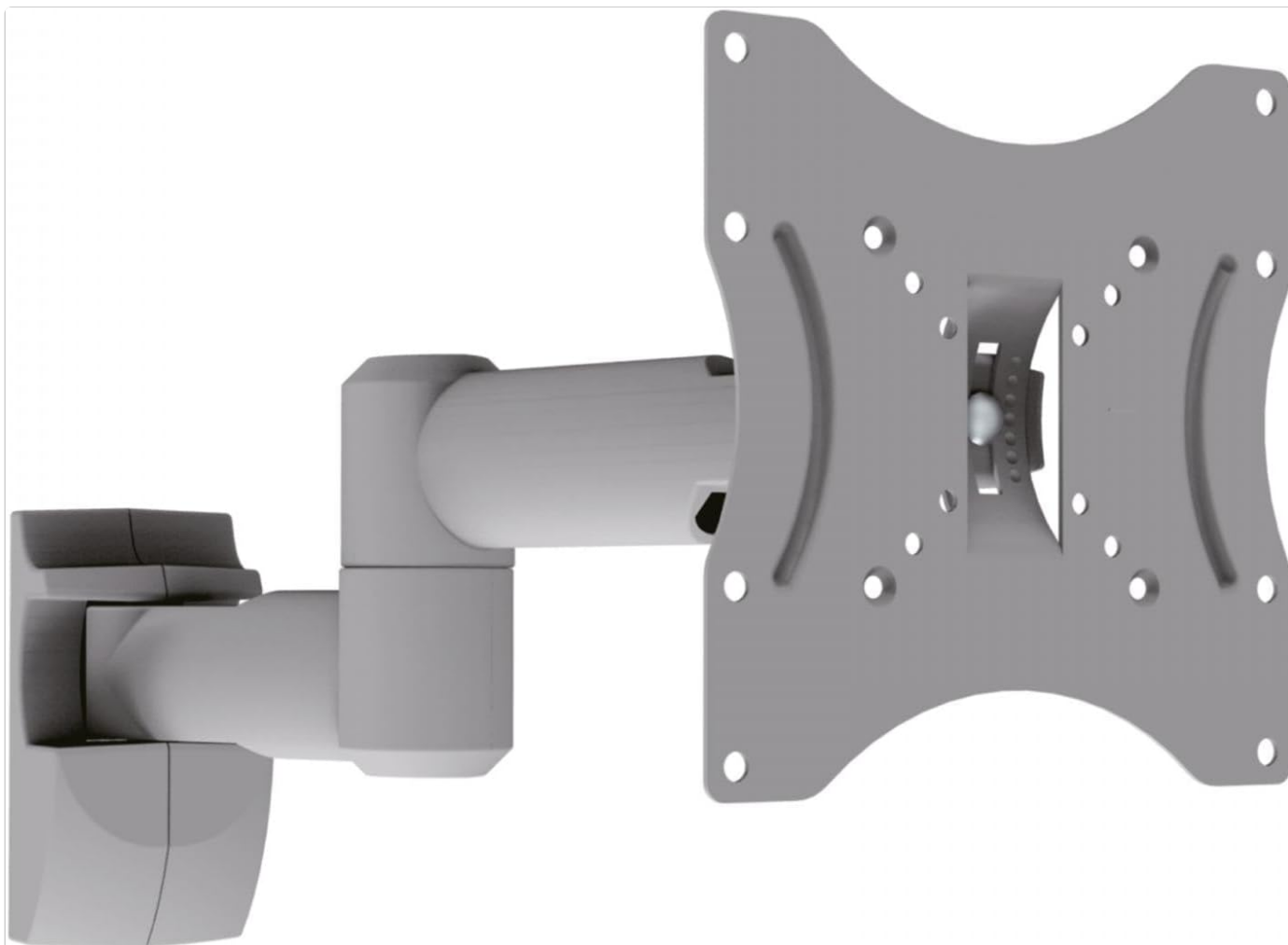


Image: The Allteq TV/Screen Wall Mount, showing the wall-mounted base, the articulated arm, and the VESA mounting plate.

1. **Select Mounting Location:** Choose a suitable wall location, ensuring it is structurally sound and free from electrical wires or plumbing. Use a stud finder if mounting to wood studs.
2. **Mark Drilling Holes:** Hold the wall plate of the mount against the wall at the desired height and use a pencil to mark the drilling holes. Use a level to ensure it is perfectly horizontal.
3. **Drill Holes:** Drill pilot holes at the marked locations using an appropriate drill bit size for your wall type (wood stud, concrete, brick). Insert wall anchors if required for your wall type.
4. **Attach Wall Plate:** Secure the wall plate to the wall using the provided wall mounting screws. Ensure it is firmly attached and level.
5. **Attach VESA Plate to TV:** Carefully place your TV face down on a soft, clean surface. Attach the VESA mounting plate to the back of your TV using the appropriate VESA screws and spacers from the provided hardware kit. Ensure the screws are tightened securely but do not overtighten.
6. **Mount TV to Arm:** With assistance, carefully lift the TV with the attached VESA plate and hook it onto the arm of the wall mount. Secure it in place according to the mount's design (e.g., by tightening security screws or clips).
7. **Cable Management:** Route cables neatly along the arm using any integrated cable management clips or ties.

Operating the Mount

The Allteq wall mount offers flexible adjustments to optimize your viewing experience.

- **Swivel:** Gently push or pull the TV to rotate it horizontally left or right. The articulated arm allows for a wide range of swivel motion.
- **Tilt:** To adjust the vertical tilt angle, loosen the tilt adjustment knobs or screws on the VESA plate (if applicable),

adjust the screen to the desired angle, and then re-tighten the knobs/screws to secure the position.

- **Extension/Retraction:** Extend or retract the TV from the wall by gently pulling or pushing the articulated arm. This allows you to adjust the viewing distance.
- **Level Adjustment:** Some mounts allow for minor post-installation leveling. Refer to specific mechanisms on your mount if needed.

Always make adjustments smoothly and avoid sudden forceful movements to prevent damage to the mount or your TV.

Maintenance

Regular maintenance ensures the longevity and safe operation of your wall mount.

- **Cleaning:** Wipe the mount with a soft, dry cloth. Do not use abrasive cleaners or solvents.
- **Check Connections:** Periodically check all screws and bolts to ensure they remain tight. Re-tighten if necessary, but do not overtighten.
- **Inspect for Damage:** Regularly inspect the mount for any signs of wear, damage, or corrosion. If any damage is observed, discontinue use and contact customer support.



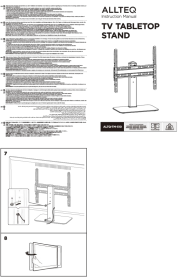
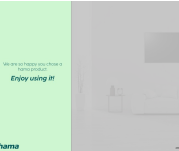
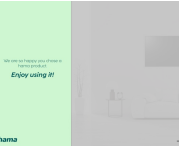

Troubleshooting

Problem	Possible Cause	Solution
Mount feels unstable after installation.	Screws not fully tightened; wall structure insufficient; incorrect anchors used.	Ensure all wall and TV mounting screws are securely tightened. Verify wall type and use appropriate anchors. If unsure, consult a professional.
TV does not tilt or swivel smoothly.	Adjustment screws too tight; dust/debris in joints.	Loosen adjustment screws slightly (if applicable). Clean joints with a dry cloth. Do not lubricate unless specified by manufacturer.
TV is not level.	Wall plate installed unevenly; TV not properly seated on VESA plate.	Check if the wall plate is level. Re-adjust if necessary. Ensure the TV is correctly seated and secured on the VESA plate. Some mounts have fine-tuning level adjustments.

Warranty and Support

Allteq products are manufactured to high quality standards. For warranty information or technical support, please refer to the warranty card included with your purchase or visit the official Allteq website. Please have your model number (ALTQ-TM-165) and purchase details ready when contacting support.



	<p>ALLTEQ ALTQ-TM-510 TV Tabletop Stand: Assembly and User Manual</p> <p>Comprehensive instruction manual for the ALLTEQ ALTQ-TM-510 TV Tabletop Stand. Learn how to safely assemble and install your TV on this versatile stand, compatible with VESA mounts and various screen sizes up to 55 inches and 40kg.</p>
	<p>ALLTEQ AK-RP-100 WiFi Repeater 300 Mbps User Manual</p> <p>Comprehensive user manual for the ALLTEQ AK-RP-100 WiFi Repeater, detailing features, specifications, setup instructions, and warranty information for this 300 Mbps wireless device.</p>
	<p>ALLTEQ ALTQ-TM-510 TV Tabletop Stand: Assembly and User Manual</p> <p>Comprehensive instruction manual for the ALLTEQ ALTQ-TM-510 TV Tabletop Stand. Learn how to safely assemble and install your TV on this versatile stand, compatible with VESA mounts and various screen sizes up to 55 inches and 40kg.</p>
	<p>Hama TV Wall Bracket 00220854 - Swivel, Inclinal, Long Arm Installation Guide</p> <p>Comprehensive installation guide for the Hama TV Wall Bracket model 00220854. Learn how to safely mount your TV with this swivel and inclinable long arm bracket, supporting up to 50 kg. Includes required tools, parts list, and step-by-step instructions.</p>
	<p>Hama TV Wall Bracket Quick Installation Guide - Model 00220835</p> <p>Step-by-step instructions for installing your Hama TV wall bracket (model 00220835). Includes required tools, parts list, and mounting steps for flat and curved TVs.</p>
	<p>Mitsubishi Electric TM-RFM Series Direct Drive Motor Instruction Manual</p> <p>This instruction manual provides detailed information on the installation, wiring, operation, and specifications of the Mitsubishi Electric TM-RFM series direct drive AC servo motors. It covers safety precautions, environmental requirements, and technical data for optimal use.</p>