

GATEXPERT SW200DC-HOMELINK

GATEXPERT SW200DC-Homelink Automatic Dual Swing Gate Opener Instruction Manual

Model: SW200DC-HOMELINK

INTRODUCTION

This manual provides detailed instructions for the installation, operation, and maintenance of your GATEXPERT SW200DC-Homelink Automatic Dual Swing Gate Opener. Please read this manual thoroughly before installation and use to ensure proper function and safety. This system is designed for dual swing gates up to 200kg (440lbs) and 2 meters (6.56ft) per arm.

SAFETY INFORMATION

WARNING: Improper installation or use can lead to serious injury or property damage. Always follow these safety guidelines:

- Ensure all electrical connections are made by a qualified electrician and comply with local codes.
- Keep children and pets away from the gate area during operation.
- Do not operate the gate opener if any part is damaged or malfunctioning.
- Regularly inspect the gate and opener for signs of wear or damage.
- Disconnect power before performing any maintenance or repairs.
- Install safety devices such as photocells to prevent the gate from closing on obstructions.
- Ensure the gate has proper mechanical stops in both open and closed positions.



Image Description: A warning label indicating "Swing Gate Can Cause Serious Injury or Death. Keep Clear. Read Manual." This emphasizes the importance of safety during installation and operation.

PACKAGE CONTENTS

Verify that all components are present before beginning installation:



Image Description: An overhead view of the GATEXPERT SW200DC-Homelink Automatic Dual Swing Gate Opener kit laid out in its packaging. It includes two gate opener arms, a control box, two remote controls, mounting brackets, hardware, and an instruction manual.

- 2 x SW200DC Gate Opener Arms
- 1 x Control Box with Built-in 24V DC Control Board
- 2 x Remote Controls (315MHz RT03-B)
- Mounting Hardware (brackets, bolts, pins, etc.)
- Instruction Manual
- Warning Labels

SPECIFICATIONS

| Feature | Specification |
|---------------------------|--------------------------------------|
| Model Number | SW200DC-HOMELINK |
| Max Gate Weight (per arm) | 200 kg (440 lbs) |
| Max Gate Length (per arm) | 2 meters (6.56 ft) |
| Power Source | AC/DC (110V AC or 24V Solar System) |
| Voltage | 110 Volts (AC) |
| Operating Temperature | -20°C to +60°C |
| Remote Control Frequency | 315MHz (GATEXPERT RT03-B compatible) |
| Item Weight | 33.1 pounds |

| Feature | Specification |
|--------------------|------------------------|
| Package Dimensions | 32 x 10.7 x 8.2 inches |

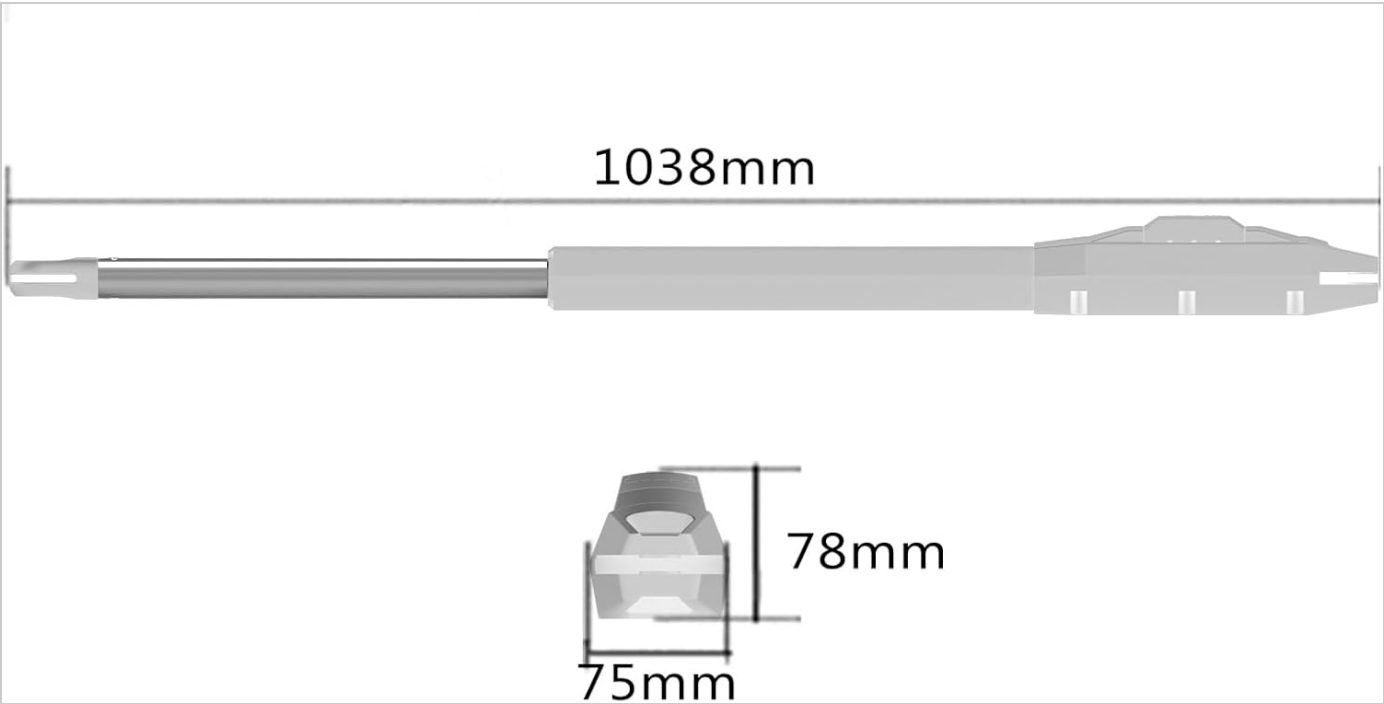


Image Description: A technical drawing showing the dimensions of one gate opener arm. The total length is 1038mm, with a width of 75mm and a height of 78mm for the main body.

SETUP AND INSTALLATION

Careful planning and precise installation are essential for optimal performance and safety. It is recommended to consult a professional installer if you are unsure about any steps.

1. Site Preparation

- Ensure the gate operates smoothly manually and is properly balanced.
- Clear any obstructions from the gate's path.
- Confirm adequate space for the opener arms to extend and retract.

2. Mounting the Gate Opener Arms

Mount the opener arms securely to the gate and gate post using the provided brackets and hardware. The exact mounting position will depend on your gate's design and opening angle. Refer to the detailed diagrams in the full manual for specific measurements.

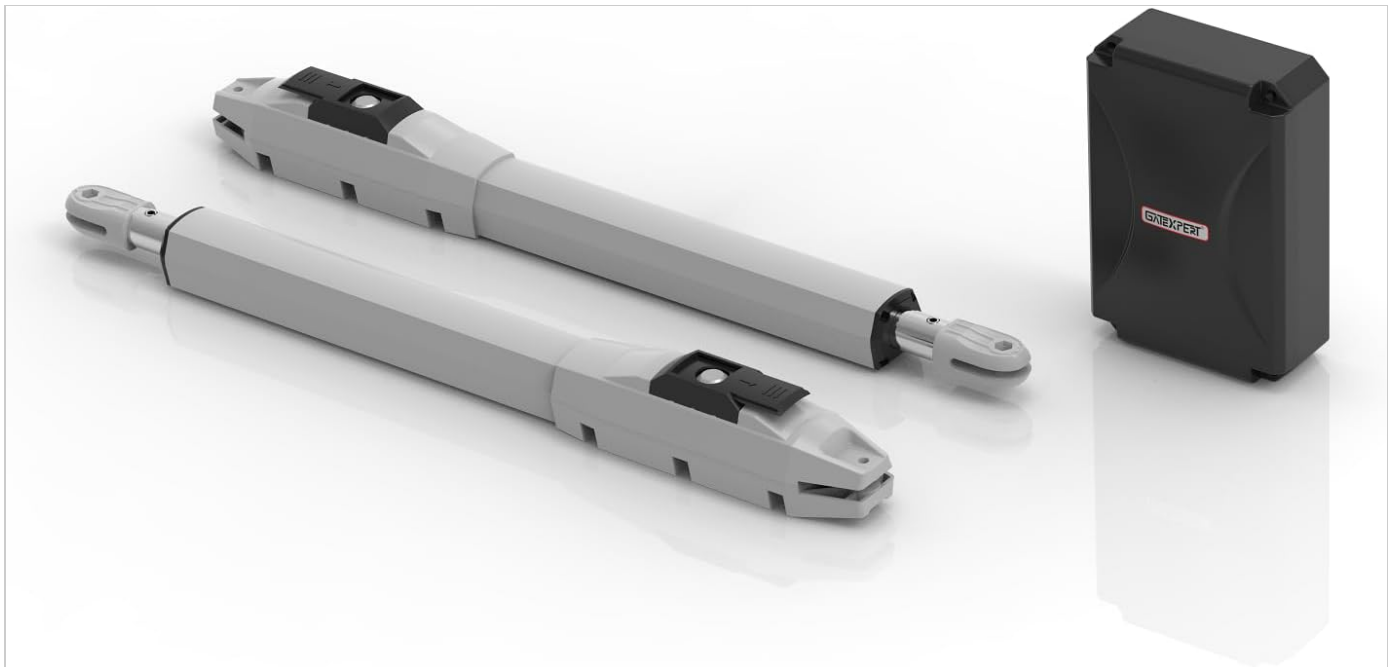


Image Description: A view of the two gate opener arms and the control box. The arms are designed to push and pull the gate leaves, while the control box houses the electronics.

ABOUT THIS ITEM

Heavy Duty & Long Lasting: The powerful motor is equipped with the latest technology to ensure the durability of the product. The max load capacity of this gate opener is up to 880lbs and the opening arm length is up to 13ft. The opener is built to last for years of reliable use.

Easy to Install: The package includes all necessary hardware and detailed instructions, making it easy to install for most people. If you have any questions during the installation, please contact us.

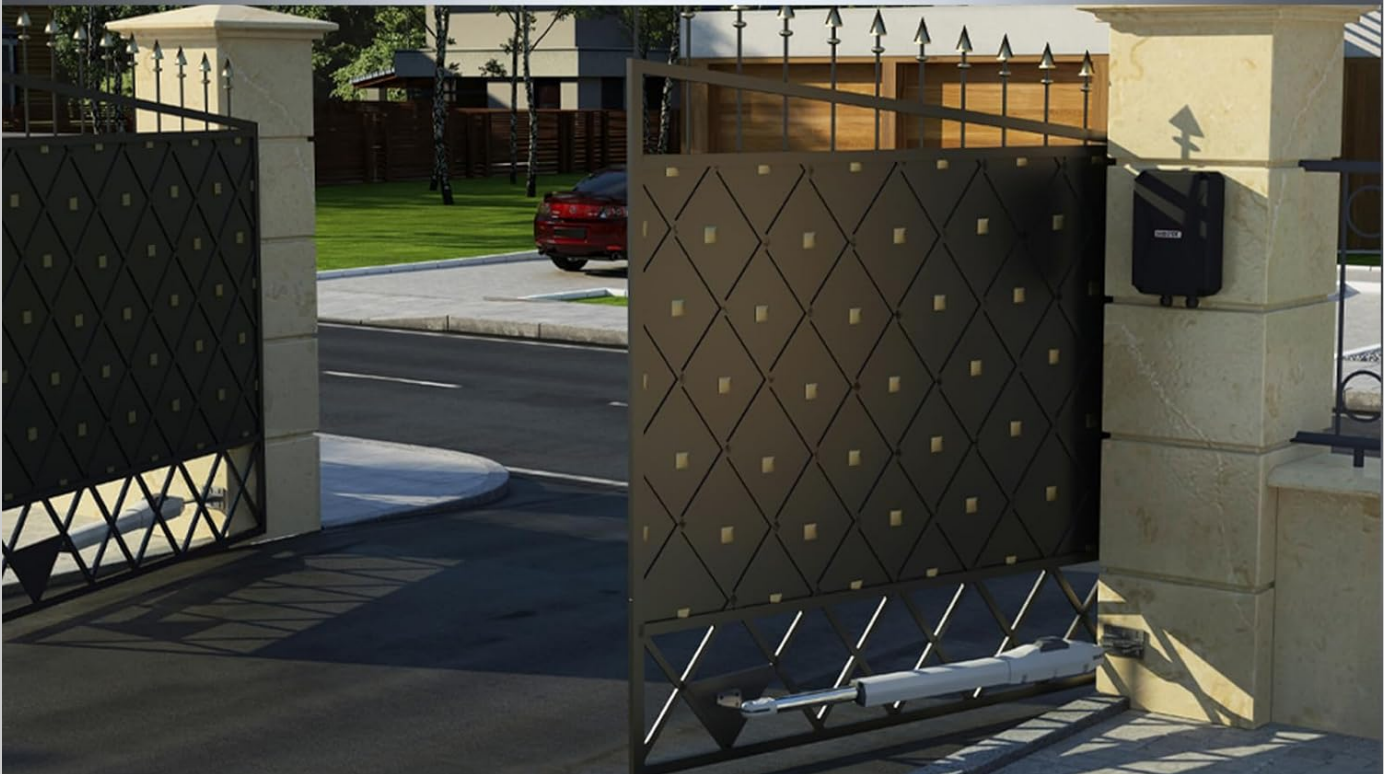


Image Description: An illustration showing the GATEXPERT gate opener system installed on a dual swing gate. One arm is visible extending from a pillar to the gate, with the control box mounted on the pillar.

3. Electrical Connections

The control box features a built-in transformer, allowing operation with either a 110V AC power supply or a 24V solar system. Connect the power supply and motor wires to the control board as indicated in the wiring diagram found in the complete manual.



Image Description: An internal view of the GATEXPERT control box, showing the circuit board and wiring terminals. This board manages the gate opener's functions and power supply.

4. Travel Setting

Performing the travel setting is critical for the gate opener to function correctly. This process teaches the system the gate's open and closed positions. Follow the specific instructions in the full manual for initiating and completing the travel setting procedure.

OPERATING INSTRUCTIONS

1. Remote Control Operation

The two included remote controls (GATEXPERT RT03-B, 315MHz) are pre-programmed at the factory to the first button. Pressing this button will open or close the gate. If additional remotes are needed, refer to the full manual for programming instructions. Only GATEXPERT RT03-B remotes are compatible.

PRODUCT DETAILS



SW200DC DUAL ARMS



CUSTOMIZED CARTONS



2*REMOTE CONTROL



CONVENIENT LIMIT STOP

Image Description: Two GATEXPERT remote controls are shown alongside the Homelink Compatible logo. This indicates the system can be integrated with vehicle-based Homelink systems.

2. Homelink Compatibility

This gate opener is compatible with Homelink systems, allowing you to open the gate using a button in your car. Follow your vehicle's Homelink programming instructions to link it with the GATEXPERT RT03-B remote control signal.

3. Low Consumption Mode

To conserve energy, the control board automatically enters a low consumption mode after one minute of inactivity on the initial screen.

MAINTENANCE

Regular maintenance ensures the longevity and safe operation of your gate opener system.

- **Monthly:** Inspect the gate and opener arms for any loose hardware, signs of wear, or corrosion. Ensure the gate

moves freely without the opener.

- **Quarterly:** Check all electrical connections for tightness and signs of damage. Clean any debris from the gate's path and around the opener arms.
- **Annually:** Lubricate moving parts of the gate and opener arms as recommended in the full manual. Test all safety features, such as photocells.
- Keep the control box clean and free from moisture and insects.

TROUBLESHOOTING

If you encounter issues with your gate opener, refer to the following common problems and solutions. For more complex issues, consult the full manual or contact customer support.

| Problem | Possible Cause | Solution |
|-------------------------------------|---|--|
| Gate does not respond to remote. | Dead remote battery, remote out of range, remote not programmed, power issue. | Replace remote battery. Move closer to the gate. Re-program remote. Check power supply to control box. |
| Gate opens partially or not at all. | Obstruction, incorrect travel setting, motor issue, low power. | Remove obstructions. Re-do travel setting. Check power supply. Inspect motor for damage. |
| Gate reverses unexpectedly. | Safety sensor (photocell) triggered, obstruction. | Clear path of gate. Clean or adjust safety sensors. |
| Gate makes unusual noises. | Lack of lubrication, worn parts, loose hardware. | Lubricate moving parts. Inspect for worn components and tighten hardware. |

WARRANTY AND SUPPORT

GATEXPERT offers a 12-month warranty for this product. Free return and replacement are available within 30 days. For any questions or technical assistance, please contact GATEXPERT customer support via email. We are committed to helping you resolve any issues.

For further assistance, please visit the [GATEXPERT Store on Amazon](#).

