

Schneider Electric RGE2094250

Schneider Electric Ritto TWINBUS IP Video Door Intercom Kit (Model RGE2094250)

User Instruction Manual

1. PRODUCT OVERVIEW

The Schneider Electric Ritto TWINBUS IP Video Door Intercom Kit is designed to provide secure and convenient communication for two-family residences. This system integrates a high-definition video door station with 7-inch touchscreen indoor monitors and mobile app connectivity, all operating on a reliable 2-wire technology.



Image 1.1: Complete Schneider Electric Ritto TWINBUS IP Video Door Intercom Kit showing outdoor station, two indoor monitors, and power supply units.

Key Features:

- High-quality 7-inch HD monitor for clear video transmission.
- Reliable 2-wire technology for simplified installation and wiring.
- Integrated Wi-Fi function for smartphone app control and remote call reception.
- Enables communication with visitors and remote door release.
- Space-saving recessed installation design in grey finish.

2. PACKAGE CONTENTS

Verify that all components listed below are included in your package:

- 1x Listo Door Station for two-family house (recessed, anthracite grey front, silver aluminum frame)
- 2x TwinBus IP Indoor Stations with 7-inch touchscreen (black front, for horizontal or vertical mounting)
- 2x REG Power Supply Units for TwinBus IP system
- 1x REG Bus Filter for interference reduction in the TwinBus IP system
- 1x Recessed Box for outdoor station

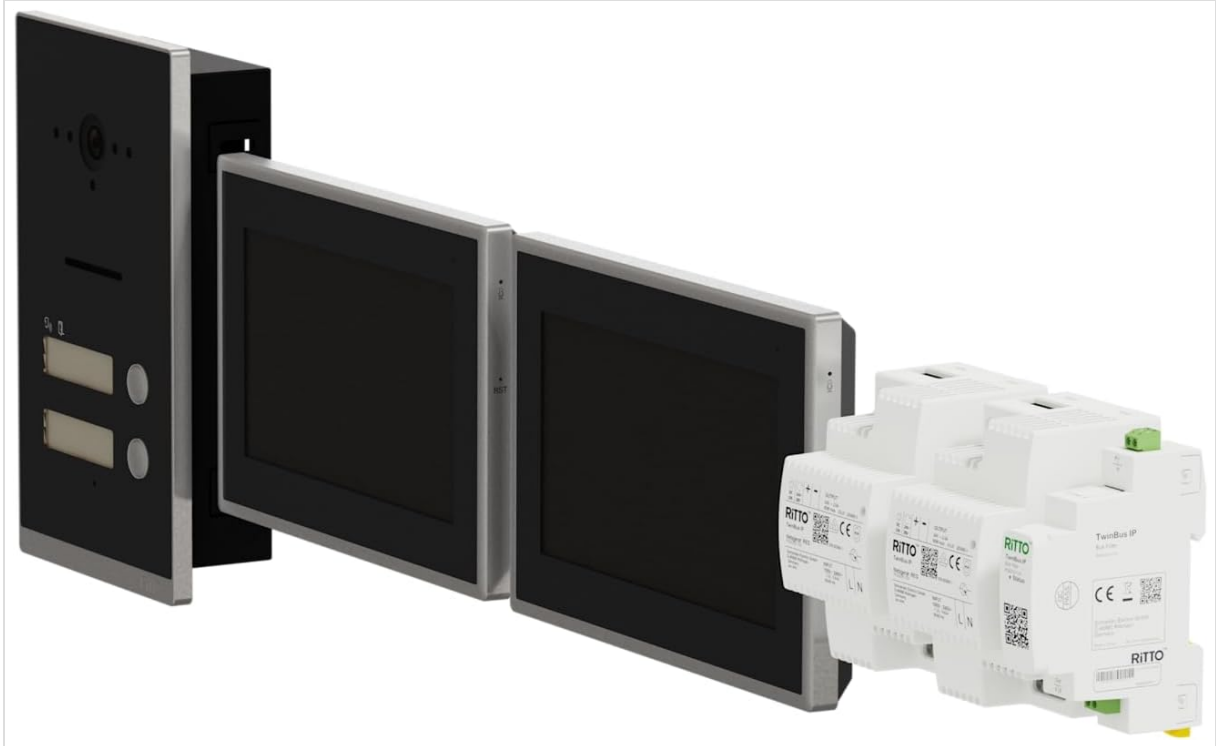


Image 2.1: Individual components of the intercom kit, including the outdoor station, two indoor monitors, and power supply units.

3. SAFETY INFORMATION

Please read and understand all safety instructions before installation and operation. Failure to follow these instructions may result in electric shock, fire, or serious injury.

- Installation should only be performed by a qualified electrician in accordance with local electrical codes and regulations.
- Ensure power is disconnected at the main circuit breaker before performing any wiring or installation.
- Do not expose the outdoor station to direct water spray or immerse it in water.
- Use only original or approved replacement parts and accessories.
- Keep children away from electrical components.

4. SETUP AND INSTALLATION

This section provides general guidelines for installing your Ritto TWINBUS IP Video Door Intercom Kit. For detailed wiring diagrams and specific installation steps, refer to the comprehensive installation manual provided with the product.

4.1. Outdoor Station Installation (Recessed)

1. **Prepare the Opening:** Create a suitable recessed opening in the wall according to the dimensions of the provided recessed box. Ensure proper drainage if installing outdoors.
2. **Install Recessed Box:** Secure the recessed box firmly within the wall opening.
3. **Wiring:** Route the 2-wire bus cable and any necessary power cables through the designated entry points in the recessed box. Connect the cables to the outdoor station terminals as per the wiring diagram.
4. **Mount Outdoor Station:** Carefully insert the outdoor station into the recessed box and secure it. Ensure the front panel is flush with the wall surface.

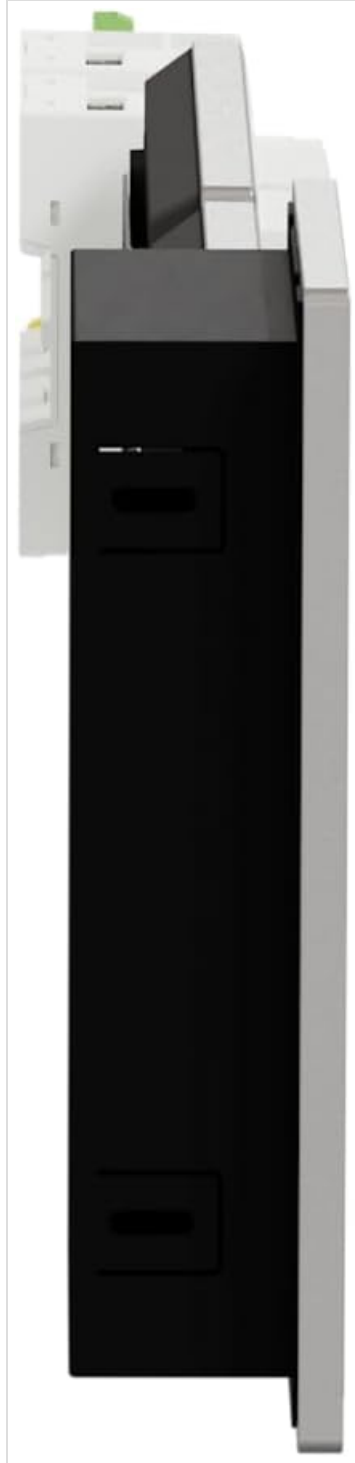


Image 4.1: Side view of the recessed outdoor door station, illustrating its slim profile for flush mounting.

4.2. Indoor Station Installation

1. **Mounting Location:** Choose a convenient indoor location for each 7-inch monitor, typically near the entrance or in a central living area.
2. **Mounting Bracket:** Install the mounting bracket securely to the wall.
3. **Wiring:** Connect the 2-wire bus cable to the indoor station terminals. Ensure correct polarity.
4. **Mount Indoor Station:** Attach the indoor station to its mounting bracket.



Image 4.2: Front view of the outdoor door station with two call buttons and camera, alongside two indoor monitors.

4.3. Power Supply and Bus Filter

Install the REG power supply units and bus filter in your electrical distribution board. Connect them to the 2-wire bus system as per the provided wiring diagram. The bus filter helps maintain signal integrity and reduce interference.

5. OPERATING INSTRUCTIONS

5.1. Using the 7" HD Touchscreen Indoor Station

- **Answering a Call:** When a visitor presses the call button on the outdoor station, the indoor monitor will ring and display the visitor's video. Touch the 'Answer' icon to establish communication.
- **Door Release:** During a call, touch the 'Door Release' icon to unlock the connected door.
- **Monitoring:** Touch the 'Monitor' icon to view the outdoor camera feed at any time, even without an incoming call.
- **Intercom Function:** Use the intercom function to communicate between the two indoor stations.

5.2. TwinBus IP App Functionality

The integrated Wi-Fi function allows you to connect your indoor stations to your home network and use the TwinBus IP app on your smartphone for remote access.

1. **App Download:** Download the 'TwinBus IP' app from your smartphone's app store (available for iOS and Android).
2. **Pairing:** Follow the in-app instructions to pair your smartphone with your indoor station via Wi-Fi.
3. **Remote Calls:** Receive door calls directly on your smartphone, even when you are away from home.
4. **Remote Door Release:** Unlock the door remotely through the app.
5. **Live View:** Access the outdoor camera's live feed from your smartphone.



Image 5.1: A user interacting with the TwinBus IP app on a smartphone, showing the live video feed from the outdoor station, with an indoor monitor displaying its interface in the background.



Image 5.2: Screenshot of the TwinBus IP mobile application interface, showing options for call history, camera view, and intercom.

6. MAINTENANCE

Regular maintenance ensures optimal performance and longevity of your intercom system.

- **Cleaning:** Use a soft, damp cloth to clean the surfaces of the outdoor station and indoor monitors. Avoid abrasive cleaners, solvents, or harsh chemicals.
- **Lens Care:** Gently wipe the camera lens with a microfiber cloth to remove dust or smudges.
- **Firmware Updates:** Check the Schneider Electric website or app for any available firmware updates for your system to ensure you have the latest features and security enhancements.

7. TROUBLESHOOTING

If you encounter issues with your intercom system, refer to the following common problems and solutions:

Problem	Possible Cause	Solution
No video or audio on indoor monitor.	Power supply issue, wiring fault, bus filter issue.	Check power connections to REG units. Verify 2-wire bus cable connections. Ensure bus filter is correctly installed.
TwinBus IP app not connecting.	Wi-Fi connectivity issue, incorrect app pairing.	Ensure indoor station is connected to Wi-Fi. Re-pair the app with the indoor station. Check router settings.
Door release not working.	Wiring to door strike/lock, power to door strike/lock.	Verify connections to the door strike/lock. Ensure the door strike/lock has adequate power.

If the problem persists, please contact Schneider Electric customer support.

8. TECHNICAL SPECIFICATIONS

Feature	Specification
Brand	Schneider Electric
Model Name	Listo Ritto Twin Bus IP Video Set
Model Number	RGE2094250
Color	Grey
Material	Aluminum
Communication Technology	2-Wire, Wi-Fi
Indoor Monitor Size	7-inch HD Touchscreen
Outdoor Station Style	Recessed
Number of Families Supported	2 Families
App Compatibility	Smartphone (iOS/Android)
Video Recording Resolution	1920p
Power Source	Electric Cable
Product Dimensions (L x W x H)	32 x 25 x 25 cm (12.6 x 9.8 x 9.8 inches)
Item Weight	3.43 kilograms (7.56 lbs)
Country of Origin	Netherlands

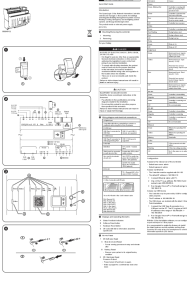

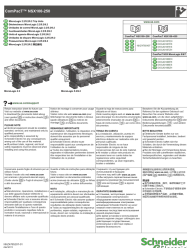
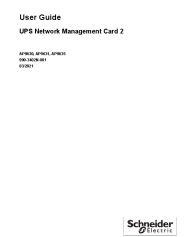

9. WARRANTY AND SUPPORT

Specific warranty information for the Schneider Electric Ritto TWINBUS IP Video Door Intercom Kit is not provided in this manual. Please refer to the warranty card included with your product or visit the official Schneider Electric website for detailed warranty terms and conditions.

For technical support, service, or spare parts inquiries, please contact Schneider Electric customer service through their official channels.

© 2023 Schneider Electric. All rights reserved.

Related Documents - RGE2094250

	<p>Schneider Electric MicroLogic 2.2/5.2/6.2 Trip Units: Installation and Settings Guide</p> <p>Comprehensive guide for installing and setting Schneider Electric MicroLogic 2.2, 5.2, and 6.2 trip units for ComPact NSX100-250 circuit breakers. Covers safety, mounting, wiring, and parameter adjustments.</p>
	<p>SpaceLogic C-Bus 5500NAC2 Network Automation Controller Quick Start Guide</p> <p>Installation, configuration, and operation guide for the Schneider Electric SpaceLogic C-Bus 5500NAC2 Network Automation Controller, designed for building management systems.</p>
	<p>Sepam IEC 60870-5-103 Communication User's Manual</p> <p>User's manual detailing the IEC 60870-5-103 communication protocol for Schneider Electric's Sepam series digital protection relays (20/40/60/80), covering configuration, data, and operation.</p>
	<p>ComPact NSX MicroLogic Trip Units: Installation, Adjustment, and Safety Guide</p> <p>This guide provides essential information for installing, adjusting, and testing Schneider Electric's ComPact NSX MicroLogic 2.2, 5.2, and 6.2 trip units. It covers safety warnings, operational procedures, configuration settings, and manufacturing date information, ensuring proper and safe use of the equipment.</p>
	<p>Schneider Electric UPS Network Management Card 2 User Guide</p> <p>Comprehensive user guide for Schneider Electric's UPS Network Management Card 2 (AP9630, AP9631, AP9635), detailing features, installation, configuration, monitoring, and troubleshooting for network-based UPS management.</p>
	<p>Schneider Electric ComPact NSX Circuit Breakers and Switch-Disconnectors 100-630 A User Guide</p> <p>User guide for Schneider Electric's ComPact NSX series circuit breakers and switch-disconnectors (100-630 A). Covers installation, operation, maintenance, trip units, accessories, and safety information for Pact Series electrical distribution equipment.</p>

