

MARSTEK Heavy Duty Waterproof Inline Cord Switch - 3-ft 16AWG

MARSTEK Heavy Duty Waterproof Inline Cord Switch - 3-ft 16AWG

Model: 3-ft 16AWG Cable Piggyback Plug (3-Pronged)

1. INTRODUCTION

This manual provides essential information for the safe and effective use of your MARSTEK Heavy Duty Waterproof Inline Cord Switch. Please read these instructions carefully before installation and operation, and retain them for future reference.

2. SAFETY INFORMATION

Always observe basic safety precautions when using electrical products to reduce the risk of fire, electric shock, and personal injury.

- Ensure the product's voltage and current ratings (20A 125V / 16A 250V) are compatible with the appliance and power source.
- Do not exceed the maximum electrical rating of the switch.
- This product features an IP66 waterproof design, protecting against powerful water jets. It is not designed for submersion in water.
- Inspect the cord and switch for any damage before each use. Do not use if damaged.
- Keep children and pets away from electrical connections.
- Disconnect power before performing any maintenance or cleaning.

3. PRODUCT FEATURES

The MARSTEK Inline Cord Switch is designed for durability and convenience:

- **Convenient Design:** Features a US 3-Pronged Piggyback Plug for easy connection of devices.
- **Heavy Duty:** Rated for 20A 125V / 16A 250V, suitable for high-current appliances.
- **Durable Construction:** Made with flame retardant PA66 housing and IP66 waterproofing for enhanced safety and longevity.
- **Robust Cable:** Equipped with a 16AWG 3-foot (92cm) cable.
- **Secure Fixing:** Includes a hook design for easy outdoor mounting.
- **Enhanced Sealing:** Embedded sealing flashing ensures better waterproof performance.

- **Impact Resistance:** Thickened shell provides stronger impact resistance.
- **Waterproof Terminal:** Features a PG9 waterproof terminal.



Image: Overview of the MARSTEK Inline Cord Switch's key features, including hook design, IP66 waterproof ability, flame retardant material, and 20A AC/DC high current capability.

4. PRODUCT SPECIFICATIONS

Product Parameters



Current	Voltage	Contact Type	In/Out Line Port
15A/20A	250V/125V	DPST	One
Material	Terminal	Connect	Color
Metal,Plastic	4-Pin	Screws	Red

Image: Detailed product parameters including dimensions, cable gauge, and electrical ratings.

Parameter	Value
Brand	MARSTEK
Model Number	39589884-7660-4e1e-b0e7-4e9b51dbc0bb
Cable Length	3 feet (92 cm)
Cable Gauge	16 AWG
Current Rating	20A (125V AC/DC), 16A (250V AC/DC)
Waterproof Rating	IP66
Plug Format	US Type B (3-Pronged Piggyback)
Material	Flame Retardant PA66 Housing, Metal, Plastic
Item Weight	10.2 ounces
Package Dimensions	10.91 x 4.76 x 2.4 inches

Parts Display

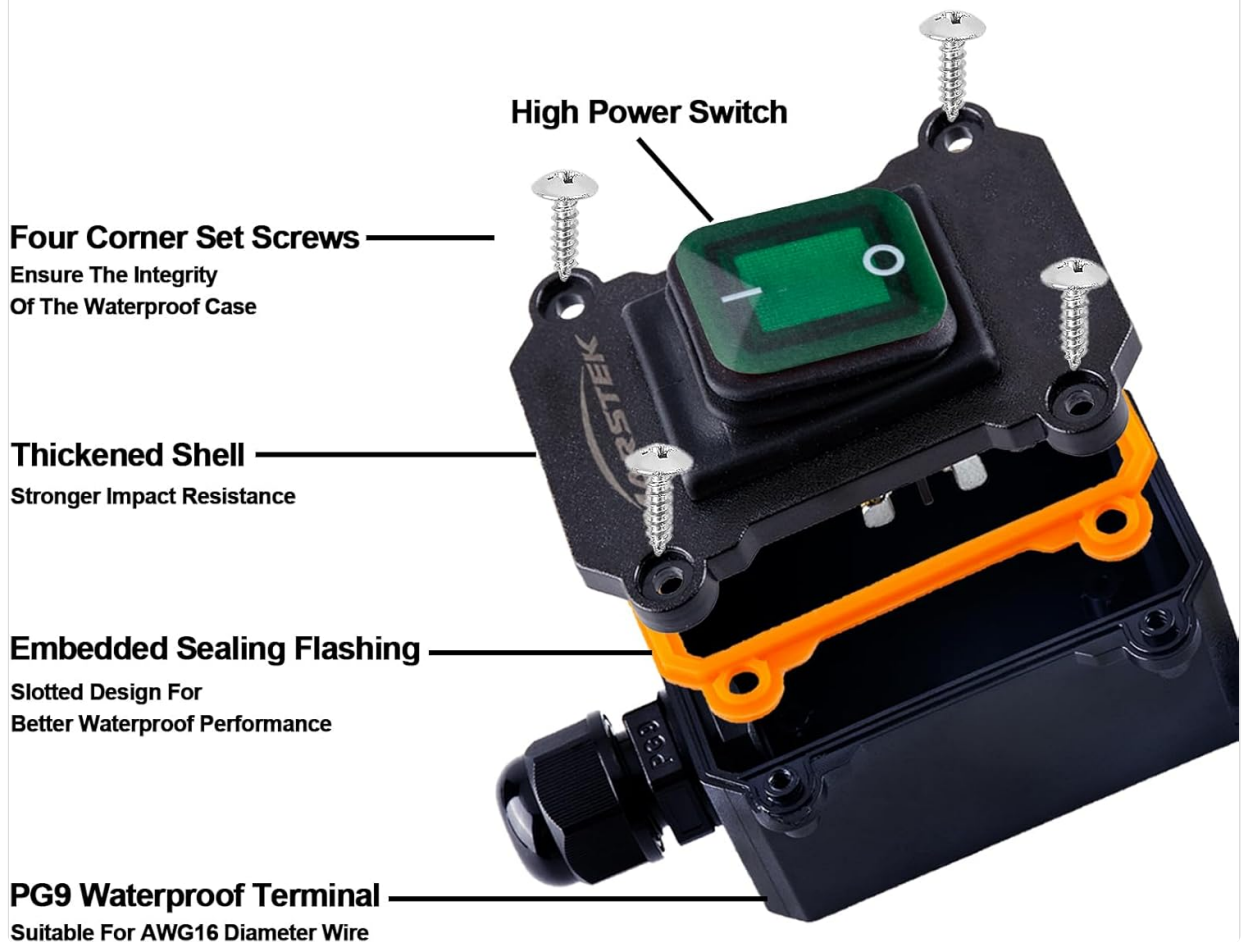


Image: Exploded view showing the internal components, including the high power switch, four corner set screws, thickened shell, embedded sealing flashing, and PG9 waterproof terminal.

5. SETUP AND INSTALLATION

Follow these steps to set up your inline cord switch:

1. Step 1: Connect to Mains Power

Plug the 3-pronged piggyback plug of the inline cord switch into a standard wall outlet or power strip.

2. Step 2: Connect Your Appliance

Plug your desired appliance (e.g., lamp, fan, outdoor light) into the 3-pronged connector located on the back of the inline cord switch's plug.

3. Step 3: Position the Switch

Place the inline switch in a convenient location. The integrated hook design allows for easy mounting in outdoor or workshop environments.

EASY TO USE

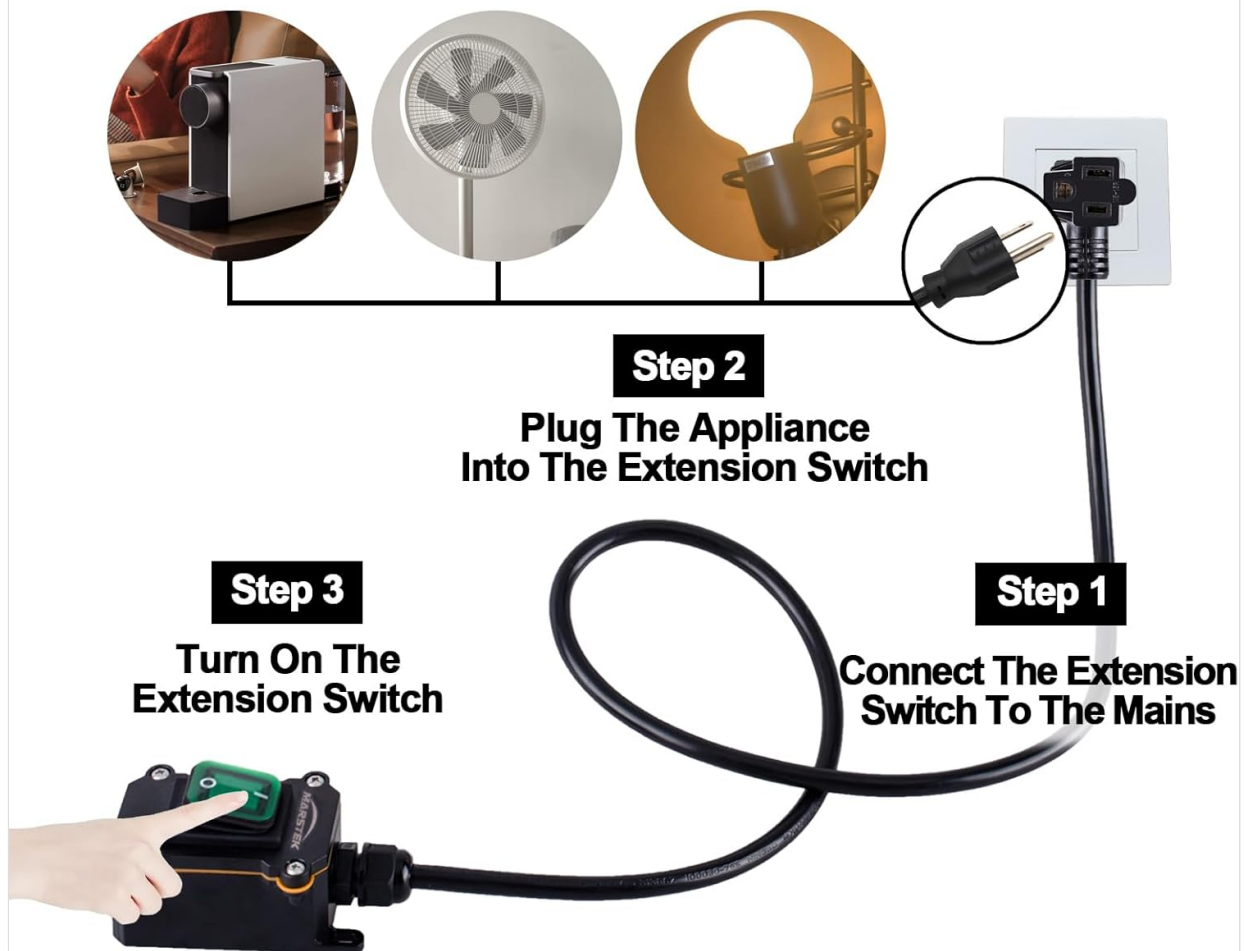


Image: Visual guide demonstrating the three steps for connecting the inline cord switch: connecting to mains, plugging in an appliance, and operating the switch.

Your browser does not support the video tag.

Video: Demonstration of the MARSTEK Waterproof Inline Cord Switch, showcasing its features, waterproof capability, and ease of use for controlling lights and other appliances.

6. OPERATING INSTRUCTIONS

Operating the MARSTEK Inline Cord Switch is straightforward:

- To turn on the connected appliance, press the "ON" side of the rocker switch. The switch will illuminate when power is active.
- To turn off the connected appliance, press the "OFF" side of the rocker switch. The illumination will turn off.

The switch provides a simple and reliable method to control power to your devices without needing to unplug them.

7. MAINTENANCE

To ensure optimal performance and longevity of your inline cord switch:

- **Cleaning:** Disconnect from power before cleaning. Wipe the exterior with a damp cloth. Do not use

harsh chemicals or abrasive cleaners.

- **Inspection:** Regularly check the cord, plug, and switch housing for any signs of wear, cuts, cracks, or damage. Ensure all screws are tight.
- **Waterproof Integrity:** Verify that the PG9 waterproof terminal and embedded sealing flashing are intact, especially if used in outdoor or damp environments.
- **Storage:** When not in use, store the switch in a clean, dry place away from direct sunlight and extreme temperatures.

8. TROUBLESHOOTING

If you encounter issues with your inline cord switch, refer to the following common problems and solutions:

Problem	Possible Cause	Solution
Appliance does not turn on when switch is "ON".	No power to the switch; appliance not properly plugged in; faulty appliance; switch malfunction.	<ul style="list-style-type: none">◦ Check if the wall outlet has power.◦ Ensure the switch's plug is fully inserted into the outlet.◦ Verify the appliance is securely plugged into the switch.◦ Test the appliance by plugging it directly into a working outlet.◦ If the switch is suspected to be faulty, discontinue use.
Switch illumination does not light up.	No power to the switch; internal LED failure.	<ul style="list-style-type: none">◦ Check power to the wall outlet.◦ If the appliance works but the light doesn't, the LED may have failed (does not affect switch function).

If problems persist or you suspect a serious electrical issue, consult a qualified electrician.

9. WIDE RANGE OF APPLICATIONS

The MARSTEK Heavy Duty Waterproof Inline Cord Switch is versatile and suitable for various indoor and outdoor applications, including:

- Controlling Christmas lights and other seasonal decorations.
- Powering equipment for RV outdoor camping.
- Managing electrical devices in gardens and patios.
- Operating high-power appliances.
- Switching lamps, fans, and LED lights.

Wide Range Of Applications

IP 66 Waterproof



Christmas Lights



RV Outdoor Camping



Bathroom



Garden

Image: Examples of various applications for the waterproof inline cord switch, such as Christmas lights, RV outdoor camping, bathrooms, and gardens.

10. WARRANTY AND SUPPORT

MARSTEK products are manufactured to high-quality standards. For warranty information or technical support, please refer to the contact details provided with your purchase or visit the official MARSTEK website.