

BOSGAME B95

BOSGAME B95 Mini PC User Manual

Model: B95

Brand: BOSGAME

1. INTRODUCTION

Thank you for choosing the **BOSGAME B95 Mini PC**. This compact and powerful desktop computer is designed for efficiency and versatility, suitable for home theater, streaming, office work, and light gaming. Featuring an **Intel 12th Gen N95 processor**, **16GB DDR4 RAM**, and a **512GB M.2 SSD**, it delivers fast and stable performance. The B95 supports **4K UHD triple screen display** and offers robust connectivity with **WiFi 5**, **Bluetooth 5.0**, and multiple USB ports.



Figure 1.1: Front and rear view of the BOSGAME B95 Mini PC, highlighting its compact design and various ports.

2. What's in the Box

Please verify that all items listed below are included in your package:

- 1x BOSGAME B95 Mini PC
- 1x HDMI Cable
- 1x VESA Mount & Screws
- 1x Power Adapter
- 1x User Manual (this document)



Figure 2.1: Contents of the BOSGAME B95 Mini PC package, including the PC, HDMI cable, VESA mount, power adapter, and user manual.



Figure 2.2: The retail packaging for the BOSGAME B95 Mini PC.

Unboxing Video

Video 2.1: An unboxing video demonstrating the contents of the BOSGAME B95 Mini PC package and initial setup steps.

3. INITIAL SETUP

Follow these steps to set up your BOSGAME B95 Mini PC:

1. **Connect to Display:** Use the included HDMI cable to connect the Mini PC to your monitor or TV. The B95 supports dual HDMI and a full-function Type-C port for triple display output.
2. **Connect Peripherals:** Plug in your keyboard and mouse to the available USB 3.2 ports.
3. **Power On:** Connect the power adapter to the DC-in port on the Mini PC and then to a power outlet. Press the power button on the front of the device.

4. **Operating System Setup:** The Mini PC comes pre-installed with Windows 11 Pro. Follow the on-screen instructions to complete the initial Windows setup, including network connection and user account creation.
5. **Internet Connection:** Connect to your network via **WiFi 5** (2.4G+5.0G dual band) or the **2.5 Gigabit Ethernet Port** for a stable wired connection.

Setup and Boot Demonstration

Video 3.1: A demonstration of connecting peripherals, powering on, and the quick boot time of the BOSGAME B95 Mini PC.

4. OPERATION

4.1 Performance

The **BOSGAME B95 Mini PC** is equipped with a **12th Gen Intel N95 processor** (up to 3.40 GHz), **16GB DDR4 RAM**, and a **512GB M.2 2280 SSD**. This configuration ensures rapid boot times, smooth multitasking, and efficient handling of various applications, from office suites to multimedia streaming.



Figure 4.1: Internal components highlighting the Intel Alder Lake-N N95 processor, 16GB DDR4 RAM, and 512GB SSD for fast and stable operation.

4.2 Display Output

The B95 Mini PC supports **triple screen display** with dual **4K HDMI** ports and one full-function **Type-C port**. This allows for extended desktop setups, enhancing productivity for work or providing an immersive experience for entertainment.



TRIPLE DISPLAY

HDMI2.0*2+USB-C

Satisfy Multi Screen Output



Figure 4.2: The Mini PC supporting a triple monitor setup, demonstrating its multi-screen output capability.



Figure 4.3: The Mini PC connected to a 4K@60Hz display, showcasing its high-resolution video output.

4.3 Connectivity

The Mini PC offers a wide array of connectivity options:

- **Wireless:** 2.4G+5.0G dual band **WiFi 5** and **Bluetooth 5.0** for wireless peripherals and network access.
- **Wired:** **2.5 Gigabit Ethernet Port** (RJ45) for high-speed wired network connections.
- **USB Ports:** 4x USB 3.2 ports for high-speed data transfer and peripheral connections.
- **Type-C Port:** Full-function Type-C port supporting PD 3.0 power supply, 4K@60Hz video output, and 10Gbps data transmission.

Compact Design , But It Has Great Power

0.6L body, does not take up too much space and is fully functionio

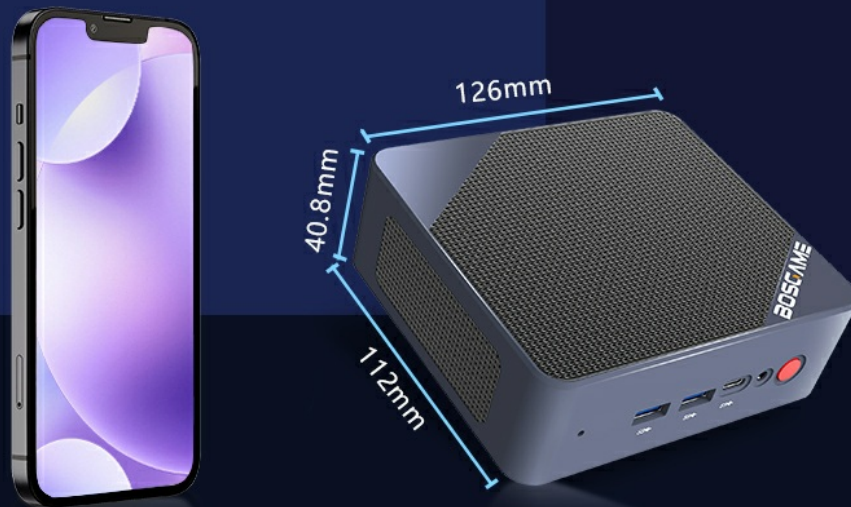


Figure 4.4: A detailed view of the wide array of ports available on the BOSGAME B95 Mini PC, including USB 3.2, Audio Jack, Power, RJ45, HDMI 2.0, and DC-in.



Full-featured USB-C



PD 3.0 power supply



Supports 4K@60Hz video output



10Gbps data transmission

Figure 4.5: The full-featured USB-C port in use, demonstrating its capabilities for power delivery, video output, and data transfer.



867Mbps

WiFi5 enables fast data transfer to meet your daily use needs.



Wake on LAN Auto power on

Setup your computer to auto power on (For more details, log on <https://www.bosgamepc.com/>)



Triple Screen Display

Supports three different screen displays, with both interfaces supporting a 4K display resolution of 3840*2160; four times that of Full HD (FHD.1920*1080); and nine times that of HD (HD.1280*720).



2.5G RJ45 LAN

2.5G LAN is a new type of network port. It provides a transmission speed of 2.5 Gbps, which is 2.5 times faster than a Gigabit LAN port.



Wall Mount

Wall mounting allows the computer to be mounted on the back of the monitor as well as on the wall or under the table, freeing up more space.

Figure 4.6: Key connectivity and convenience features including WiFi 5, Wake on LAN, Auto Power On, Triple Screen Display, 2.5G RJ45 LAN, and Wall Mount support.

4.4 Compact Design & VESA Mount

The B95 Mini PC features a compact and lightweight design (129mm x 137mm x 54.5mm), making it ideal for space-saving setups. It supports VESA mounting, allowing it to be attached to the back of a display for an all-in-one solution.

Large Amount Of Memory

Dual HDMI & Type-C Supports Triple Screen Display For Efficient Office Work



Figure 4.7: The compact design of the BOSGAME B95 Mini PC, shown next to a smartphone for scale.

4.5 Quiet Operation

Designed for silent performance, the B95 Mini PC operates with minimal noise, making it suitable for quiet environments like home theaters or offices.



Outstanding quietness

Quiet enjoyment

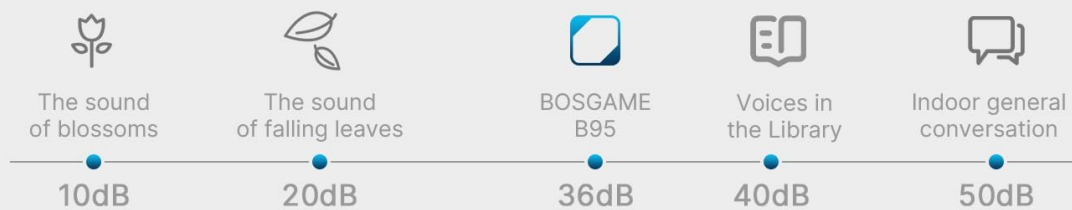


Figure 4.8: A chart illustrating the low noise level of the BOSGAME B95 Mini PC, emphasizing its quiet operation.

4.6 Versatile Applications

The BOSGAME B95 Mini PC is suitable for a variety of uses, including:

- Office work and business applications
- Home entertainment and streaming
- Educational purposes
- Design and creative tasks
- Light gaming

Meet various creative needs



Speaker



Security cameras



Projector



Office Equipment



Keyboard & Mouse

Figure 4.9: Examples of how the BOSGAME B95 Mini PC can meet various creative and daily needs, including home theater, office, and connectivity with external devices.

5. MAINTENANCE

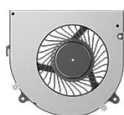
5.1 Efficient Heat Dissipation

The B95 Mini PC is designed with an efficient and stable heat dissipation system to ensure quiet operation and prevent overheating, even under load. This system helps maintain optimal performance and extends the lifespan of the device.

Efficient heat dissipation



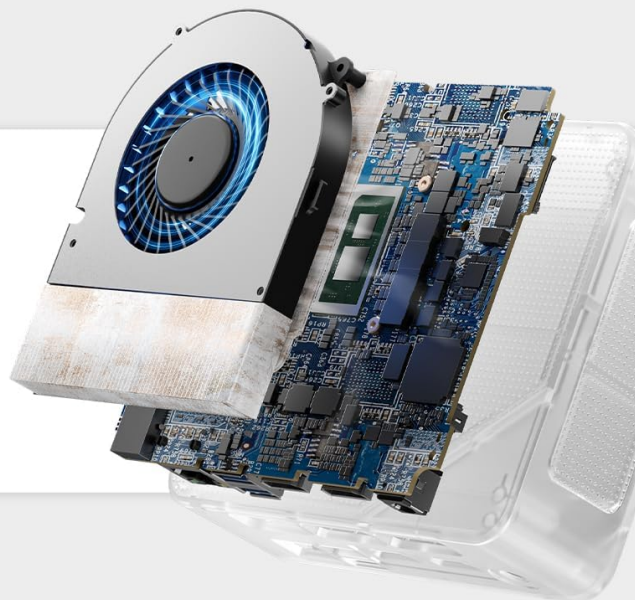
Efficient and stable heat dissipation system, quiet operation



Cooling Fan



Heat Conduits



52-63°C

Illustrator

52-61°C

CorelDRAW

51-60°C

Word

54-66°C

Photoshop

58-67°C

Dreamweaver

48-58°C

Excel

*Different configurations and environments may lead to different temperatures

Figure 5.1: Illustration of the efficient heat dissipation system within the BOSGAME B95 Mini PC, featuring a cooling fan and heat conduits.

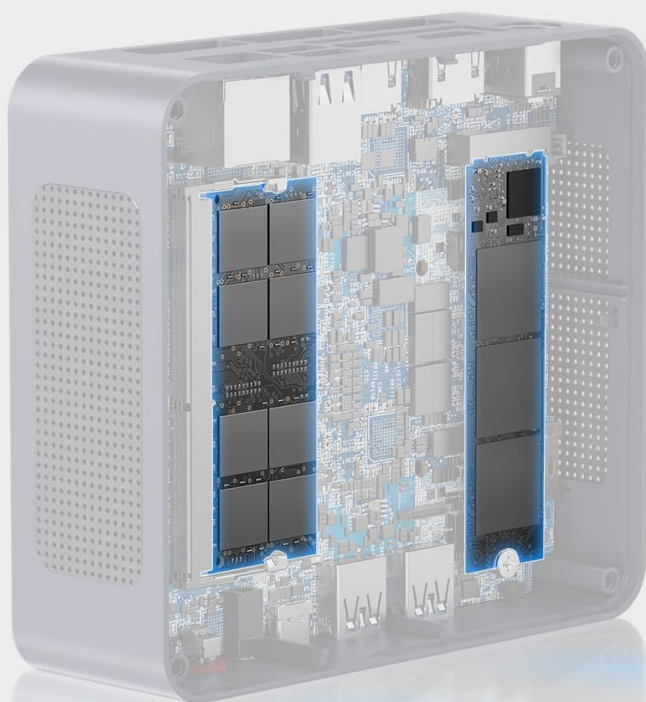
5.2 Storage Expansion

The Mini PC is equipped with a 512GB M.2 2280 SSD and supports expansion with an additional **M.2 2280 NVMe SSD** or a **2.5" SSD** (up to 2TB, not included). This allows for significant storage upgrades if needed.



Extremely fast loading

Stable operation



16GB DDR4

SODIMM Max 3200MHz



512GB SSD

M.2 2280

Figure 5.2: Internal view of the BOSGAME B95 Mini PC, showing the 16GB DDR4 SODIMM and 512GB M.2 2280 SSD, indicating expandability.

5.3 General Care

- Keep the device in a clean, dry environment away from direct sunlight and extreme temperatures.
- Ensure proper ventilation by not blocking the air vents.
- Clean the exterior with a soft, dry cloth. Avoid liquid cleaners.

6. TROUBLESHOOTING

If you encounter issues with your BOSGAME B95 Mini PC, please refer to the following common solutions:

Problem	Possible Cause	Solution
---------	----------------	----------

Problem	Possible Cause	Solution
No display on monitor	Loose cable connection, incorrect input source, monitor off.	Check HDMI/Type-C cable connections. Ensure monitor is on and set to the correct input. Try a different cable or port.
No power	Power adapter not connected, power outlet issue.	Verify power adapter is securely connected to both the PC and the outlet. Try a different power outlet.
Wi-Fi connection issues	Incorrect password, router issues, driver problems.	Double-check Wi-Fi password. Restart your router. Update Wi-Fi drivers via Device Manager.
Slow performance	Too many programs running, low disk space, outdated drivers.	Close unnecessary applications. Free up disk space. Run Windows Update to install the latest drivers and system updates.
Peripherals not recognized	Loose connection, driver issues, faulty peripheral.	Ensure the peripheral is properly plugged into a USB port. Try a different USB port. Update or reinstall peripheral drivers. Test the peripheral on another computer.

7. SPECIFICATIONS

Feature	Detail
Processor	Intel 12th Gen N95 (up to 3.40 GHz, 4C/4T)
RAM	16GB DDR4 DIMM (2666 MHz)
Storage	512GB M.2 2280 SSD
Storage Expansion	Supports M.2 2280 NVMe SSD / 2.5" SSD (up to 2TB, not included)
Graphics	Intel UHD Graphics 630 (Integrated)
Display Output	Dual 4K HDMI, Full-function Type-C (4K@60Hz)
Wireless Connectivity	WiFi 5 (802.11a/b/g/n/ac, 2.4G+5.0G dual band), Bluetooth 5.0
Wired Connectivity	2.5 Gigabit Ethernet (RJ45)
USB Ports	4x USB 3.2
Operating System	Windows 11 Pro
Dimensions (LxWxH)	4.96 x 4.41 x 1.61 inches (129mm x 137mm x 54.5mm)
Weight	2.13 pounds
Color	Black

Feature	Detail
Hardware Platform	PC, Linux

8. WARRANTY AND SUPPORT

BOSGAME is committed to providing excellent customer service and product support.

8.1 Warranty

Your BOSGAME B95 Mini PC comes with a **12-month satisfying service** from the date of purchase, covering manufacturing defects and hardware malfunctions under normal use conditions.

8.2 Technical Support

We offer **lifetime technical support** for your BOSGAME B95 Mini PC. If you have any questions, encounter issues, or require assistance, please contact us through the following channels:

- **Email:** support@bosgamepc.com
- **Online:** Log in to your Amazon account, navigate to "Your Orders," and select "Ask Product Question" for the BOSGAME B95 Mini PC.