

JBL JBLVBEAMBLUAM

JBL Vibe Beam True Wireless Earbuds User Manual

Model: JBLVBEAMBLUAM

1. INTRODUCTION

This manual provides essential instructions for the setup, operation, maintenance, and troubleshooting of your JBL Vibe Beam True Wireless Earbuds. Please read this guide thoroughly to ensure optimal performance and longevity of your device.



A pair of blue JBL Vibe Beam earbuds are shown, one nestled in its open charging case, and the other resting beside the case. The charging case has LED indicators and the JBL logo.

2. PACKAGE CONTENTS

Verify that all items are present in your package:

- 1 x JBL Vibe Beam earbuds
- 1 x Charging case
- 1 x Type-C to Type-A charging cable
- 3 x Sizes of eartips (Small, Medium, Large)
- 1 x Quick Start Guide / Safety Sheet
- 1 x Warranty / Warning

3. SETUP

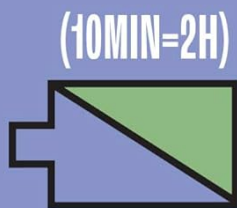
3.1. Charging the Earbuds and Case

Before first use, fully charge the earbuds and the charging case. Connect the provided Type-C to Type-A charging cable to the charging case and a power source. The LED indicators on the case will show the charging status.

- **Earbud Battery Life:** Up to 8 hours on a single charge.

- **Total Battery Life (with case):** Up to 32 hours (8 hours + 24 hours from case).
- **Speed Charge:** A 10-minute charge provides approximately 2 hours of playback.
- **Full Charge Time:** Approximately 2 hours for earbuds and case.

32H BATTERY 8H + 24H WITH SPEED CHARGE



An image highlighting the 32-hour total battery life of the JBL Vibe Beam earbuds, broken down into 8 hours for the earbuds and an additional 24 hours from the charging case. It also shows a speed charge icon indicating 10 minutes of charging provides 2 hours of playback.

3.2. Powering On/Off

- **Power On:** Open the charging case, and the earbuds will automatically power on.
- **Power Off:** Place the earbuds back into the charging case and close the lid. They will automatically disconnect and power off.

3.3. Bluetooth Pairing

1. Ensure the earbuds are charged and powered on.
2. Open the charging case. The earbuds will enter pairing mode, indicated by a flashing LED on one of the earbuds.

3. On your device (smartphone, tablet, etc.), enable Bluetooth and search for available devices.
4. Select "JBL Vibe Beam" from the list of devices to connect.
5. Once connected, the LED indicator on the earbud will turn solid blue or off, depending on the model.

3.4. Fitting the Earbuds

For optimal sound quality and comfort, it is crucial to select the correct eartip size and ensure a proper fit.

1. Try all three sizes of eartips (Small, Medium, Large) included in the package.
2. Insert the earbud into your ear canal and gently twist it forward or backward until it feels secure and comfortable.
3. A good fit will provide better bass response and passive noise isolation.



A diagram showing a cross-section of an ear with an earbud correctly placed inside, demonstrating a secure in-ear fit.

3.5. JBL Headphones App

Enhance your listening experience by downloading the JBL Headphones App. The app allows for sound customization, control settings, and other features for your JBL Vibe Beam earbuds. It is compatible with devices that support the JBL Headphones App.

4. OPERATION

4.1. Touch Controls

The JBL Vibe Beam earbuds feature intuitive touch controls for managing playback, calls, and voice assistants. Refer to the Quick Start Guide for specific tap patterns for functions like play/pause, skip track, answer/end call, and activate voice assistant.



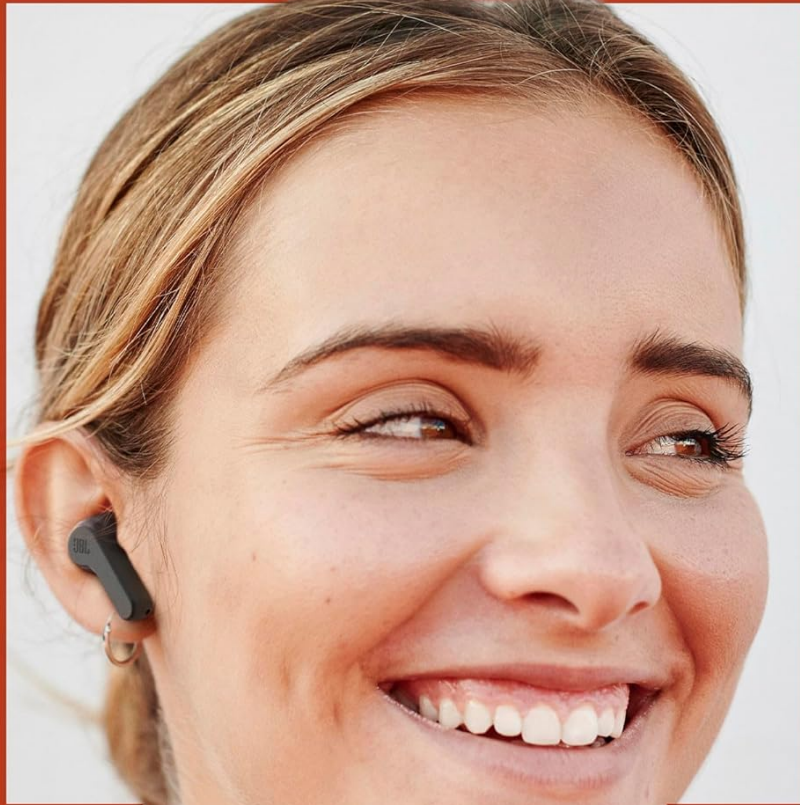
A detailed diagram of a single JBL Vibe Beam earbud, with specific areas indicated to illustrate where touch controls are located for various functions.

4.2. Making Calls with VoiceAware

When making hands-free stereo calls, the VoiceAware feature allows you to control how much of your own voice you hear during conversations. This can improve call clarity and comfort.

4.3. JBL Deep Bass Sound

The 8mm drivers in the JBL Vibe Beam earbuds deliver JBL Deep Bass Sound, providing a rich audio experience with enhanced low frequencies for your music and other audio content.



JBL DEEP BASS SOUND

A woman is shown smiling and wearing a JBL Vibe Beam earbud in her ear, illustrating the product in use. The text "JBL Deep Bass Sound" is prominently displayed, emphasizing the audio quality.

4.4. Water and Dust Resistance

The JBL Vibe Beam earbuds are IP54-certified for water and dust resistance, and the charging case is IPX2-certified. This means they are protected against splashes of water and dust ingress, making them suitable for various environments and activities.



A pair of JBL Vibe Beam earbuds are displayed, accompanied by the text "All-Day Comfort Fit," suggesting their ergonomic design for extended wear.

5. MAINTENANCE

5.1. Cleaning

- Regularly clean the earbuds, especially the eartips and charging contacts, with a soft, dry, lint-free cloth.
- Do not use harsh chemicals or abrasive materials.
- Ensure the earbuds and charging case are completely dry before charging or storing.

5.2. Storage

When not in use, store the earbuds in their charging case to protect them and keep them charged. Avoid exposing the earbuds or case to extreme temperatures, humidity, or direct sunlight for extended periods.

6. TROUBLESHOOTING

If you encounter issues with your JBL Vibe Beam earbuds, refer to the following common solutions:

- **No Sound:** Ensure earbuds are charged, properly paired, and volume is adjusted on both the earbuds and your device.
- **Pairing Issues:** Turn off Bluetooth on your device, then turn it back on. Forget the "JBL Vibe Beam" from your device's Bluetooth list and attempt to pair again. Ensure no other devices are trying to connect simultaneously.
- **Charging Problems:** Check that the charging cable is securely connected to both the case and the power source. Ensure the charging contacts on the earbuds and inside the case are clean and free of debris.
- **Uncomfortable Fit:** Experiment with different eartip sizes to find the best fit for your ears.
- **Earbuds Not Responding:** Place both earbuds back into the charging case, close the lid, wait a few seconds, then open it again. This can often reset minor issues.

For more detailed troubleshooting or persistent issues, consult the official JBL support resources.

7. SPECIFICATIONS

Feature	Specification
Model Name	JBL Vibe Beam
Connectivity Technology	Bluetooth
Bluetooth Version	5.2
Bluetooth Range	10 Meters
Audio Driver Type	Dynamic Driver
Audio Driver Size	8 Millimeters
Frequency Range	20 Hz - 20 kHz
Impedance	16 Ohm
Sensitivity	99 dB
Battery Life (Earbuds)	Up to 8 hours
Total Battery Life (with case)	Up to 32 hours
Charging Time	2 Hours
Water Resistance Level	IP54 (Earbuds), IPX2 (Charging Case)
Control Method	Touch
Item Weight	58 Grams (2.05 ounces)
Product Dimensions	3.94 x 0.79 x 1.06 inches

Feature	Specification
Manufacturer	JBL
UPC	050036397957

8. WARRANTY AND SUPPORT





JBL products are designed for durability and performance. Your JBL Vibe Beam earbuds are covered by a manufacturer's warranty. Please refer to the "Warranty / Warning" document included in your package for specific terms and conditions.


For product support, frequently asked questions, or to contact customer service, please visit the official JBL website or your regional JBL support portal. You can also visit the [JBL Store on Amazon](#) for additional resources.



© 2025 JBL. All rights reserved.

Related Documents - JBLVBEAMBLUAM

	<p>JBL Vibe Beam Quick Start Guide</p> <p>Concise guide to setting up and using your JBL Vibe Beam wireless earbuds, covering pairing, controls, app features, and charging.</p>
	<p>JBL Vibe Beam 2: Quick Start Guide & Features</p> <p>Get started with your JBL Vibe Beam 2 True Wireless Noise Cancelling Earbuds. Learn setup, controls, app features, technical specifications, and more.</p>
	<p>JBL Vibe Beam 2 True Wireless Noise Cancelling Earbuds - Features & Specifications</p> <p>Explore the JBL Vibe Beam 2, true wireless noise-cancelling earbuds offering JBL Pure Bass Sound, Active Noise Cancelling, Smart Ambient, 4-mic call clarity, IP54 water resistance, and up to 40 hours of total playback time. Includes detailed features, technical specifications, and box contents.</p>
	<p>How to Factory Reset JBL True Wireless Stereo Earbuds</p> <p>A step-by-step guide on how to perform a factory reset on JBL True Wireless Stereo earbuds. Includes instructions for general reset and specific steps for JBL Tune Flex, along with a list of compatible models.</p>

<div><p>How to Factory Reset True Wireless Stereo Earbuds</p><p>Resetting the earbuds to factory settings can help resolve many issues. Follow these steps to perform a factory reset on your JBL True Wireless Stereo earbuds.</p><p>1. Remove the earbuds from the charging case.</p><p>2. Press and hold the power button on the back of the earbud for 10 seconds.</p><p>3. The earbud will flash red light, indicating it is in reset mode.</p><p>4. Repeat steps 1 and 2 for the other earbud.</p><p>5. Place the earbuds back in the charging case and close the lid.</p><p>6. The earbuds will power on and connect to the case.</p><p>7. The earbuds are now reset to factory settings.</p><p>Cleaning Instructions for Re-establishing Charging</p></div>	<p>How to Factory Reset and Clean JBL True Wireless Stereo Earbuds</p> <p>Learn how to perform a factory reset on your JBL True Wireless Stereo earbuds and troubleshoot charging issues by cleaning the contact points. Includes instructions for various JBL models.</p>
<div><p>JBL VIBE BEAM 2</p><p>Discover the JBL Vibe Beam 2, true wireless earbuds featuring JBL Pure Bass Sound, Active Noise Cancelling, Smart Ambient, and up to 40 hours of playback. Ideal for calls, music, and everyday use. Explore features, specifications, and what's included.</p></div>	<p>JBL Vibe Beam 2: True Wireless Noise Cancelling Earbuds with Pure Bass Sound</p> <p>Discover the JBL Vibe Beam 2, true wireless earbuds featuring JBL Pure Bass Sound, Active Noise Cancelling, Smart Ambient, and up to 40 hours of playback. Ideal for calls, music, and everyday use. Explore features, specifications, and what's included.</p>