

YEAUPE DCH7010CP

YEAUPE High-Pressure Shower Head Instruction Manual

Model: DCH7010CP

1. INTRODUCTION

This manual provides essential information for the installation, operation, and maintenance of your YEAUPE High-Pressure Shower Head. Designed for daily use, this shower head features a 130mm diameter spray plate for broad water coverage and offers multiple spray modes to enhance your showering experience. Please read these instructions carefully before use to ensure proper function and longevity of your product.



Figure 1: YEAUPE High-Pressure Shower Head. This image displays the YEAUPE High-Pressure Shower Head in its chrome finish, featuring a large 130mm diameter head with a dark gray nozzle plate. An orange water restrictor is shown separately below the shower head.

2. PACKAGE CONTENTS

Verify that all components are present in the package:

- 1 x Shower Head
- 1 x Sealing Ring
- 1 x Sealing Tape (not explicitly shown in image but typically included for G1/2 connections)
- 1 x Water Restrictor

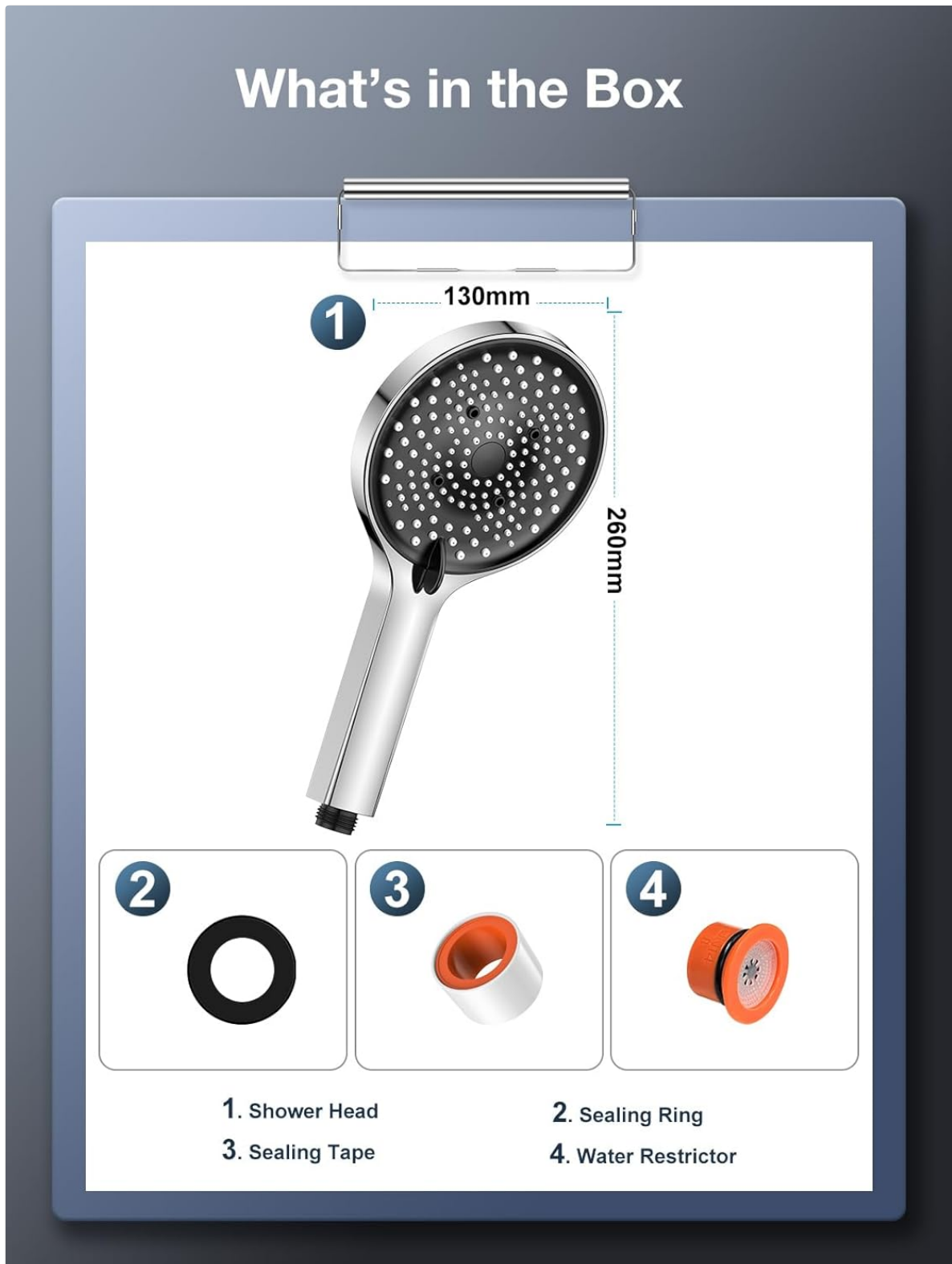


Figure 2: Package Contents. This diagram illustrates the contents of the product package, including the main shower head (1), a sealing ring (2), sealing tape (3), and a water restrictor (4). Dimensions of the shower head are also indicated.

3. SETUP AND INSTALLATION

The YEAUPE shower head features a universal G1/2 interface, compatible with most standard shower hoses. No special tools are required for installation.

Installation Steps:

1. **Prepare:** Ensure your water supply is turned off before beginning installation.
2. **Remove Old Shower Head:** Unscrew your existing shower head from the shower hose.
3. **Insert Sealing Ring:** Place the provided sealing ring into the connector end of the new YEAUPE shower head. Ensure it is seated correctly to prevent leaks.
4. **Consider Water Restrictor (Optional):** The shower head includes a water restrictor. If you experience low water pressure and wish to increase flow, you may choose to remove this restrictor before installation. For water conservation, install it. (Refer to Section 5 for more details).
5. **Attach New Shower Head:** Screw the YEAUPE shower head onto your shower hose by hand until it is snug. Do not overtighten.
6. **Test:** Turn on the water supply and check for any leaks. If leaks occur, ensure the sealing ring is properly seated and the connection is tight.

Easy to Install



Figure 3: Easy Installation. This image shows the process of installing the shower head, highlighting the correct placement of the sealing ring and the optional water restrictor into the shower head's connection point before attaching it to a standard G1/2 shower hose.

4. OPERATING INSTRUCTIONS

Your YEAUPE shower head offers 6 distinct spray modes, allowing you to customize your showering experience. To switch between modes, simply rotate the selector on the shower head.

Available Spray Modes:

- **Oxygenated Shower Spray:** A gentle, aerated spray for a soft feel.

- **Rain:** A classic, full-coverage rain-like spray.
- **Rain + Power Massage:** Combines the rain spray with a focused, invigorating massage stream.
- **Power Massage:** A concentrated, powerful stream for muscle relaxation.
- **Power Massage + Power Wash:** A combination of massage and a strong, targeted wash.
- **Power Wash:** A high-pressure, focused stream ideal for rinsing or cleaning.

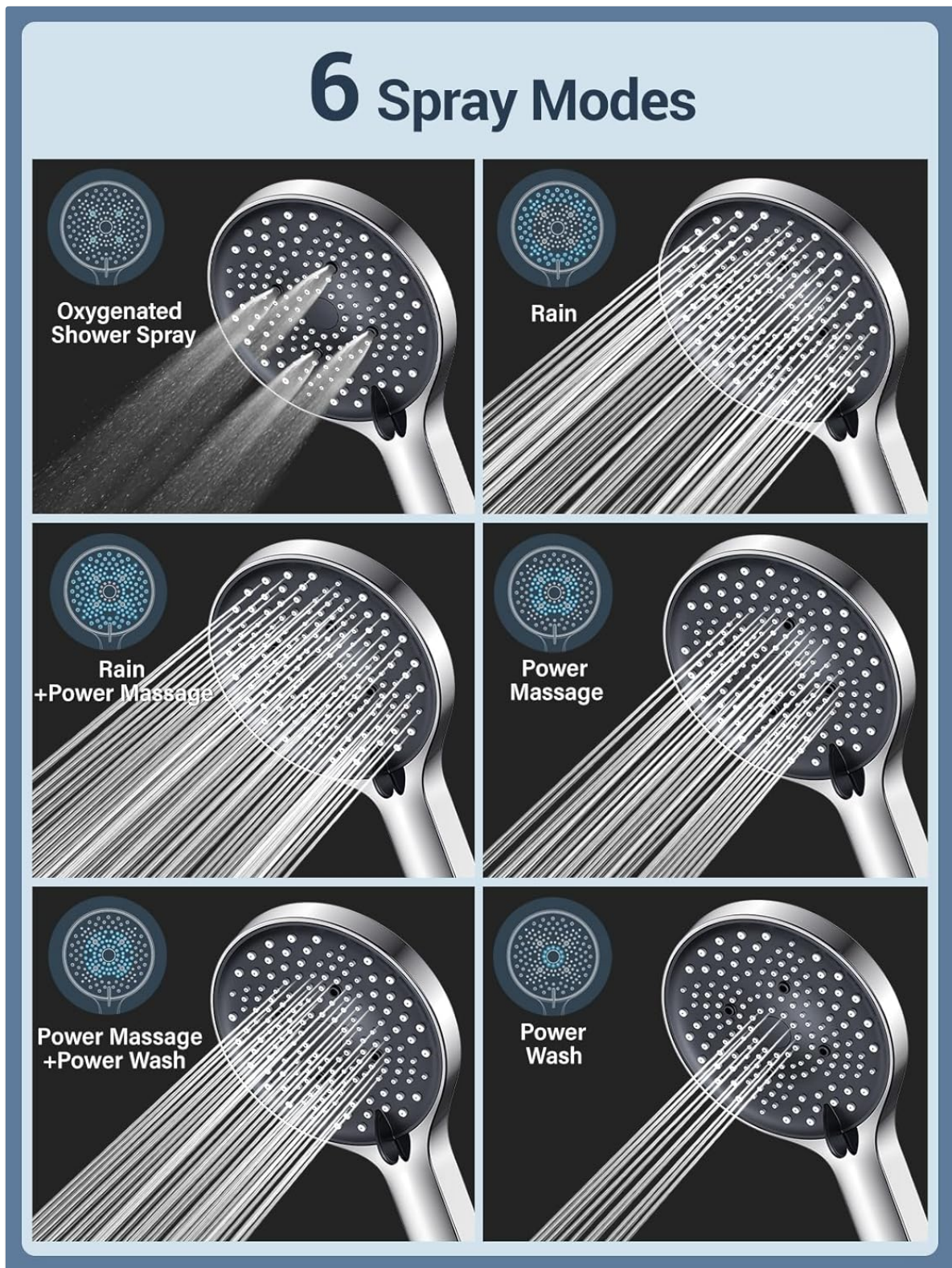


Figure 4: Six Spray Modes. This visual guide demonstrates the six distinct spray patterns available with the YEAUPE shower head, each offering a different water flow experience.

5. MAINTENANCE

Regular cleaning helps maintain optimal performance and extends the life of your shower head.

Cleaning Anti-Scale Nozzles:

The YEAUPE shower head is equipped with anti-scale silicone nozzles. Over time, mineral deposits (limescale) can accumulate. To clean:

- Simply wipe the silicone nozzles with a soft cloth or gently rub them with your finger to dislodge any buildup.
- For more stubborn deposits, a soft brush (like an old toothbrush) can be used with a mild cleaning solution.
- Avoid using harsh abrasive cleaners or tools that could damage the chrome finish or silicone nozzles.

Anti-Scale Silicone Nozzles, Easy to Clean

Easily removes scale with
a soft cloth or fingernail

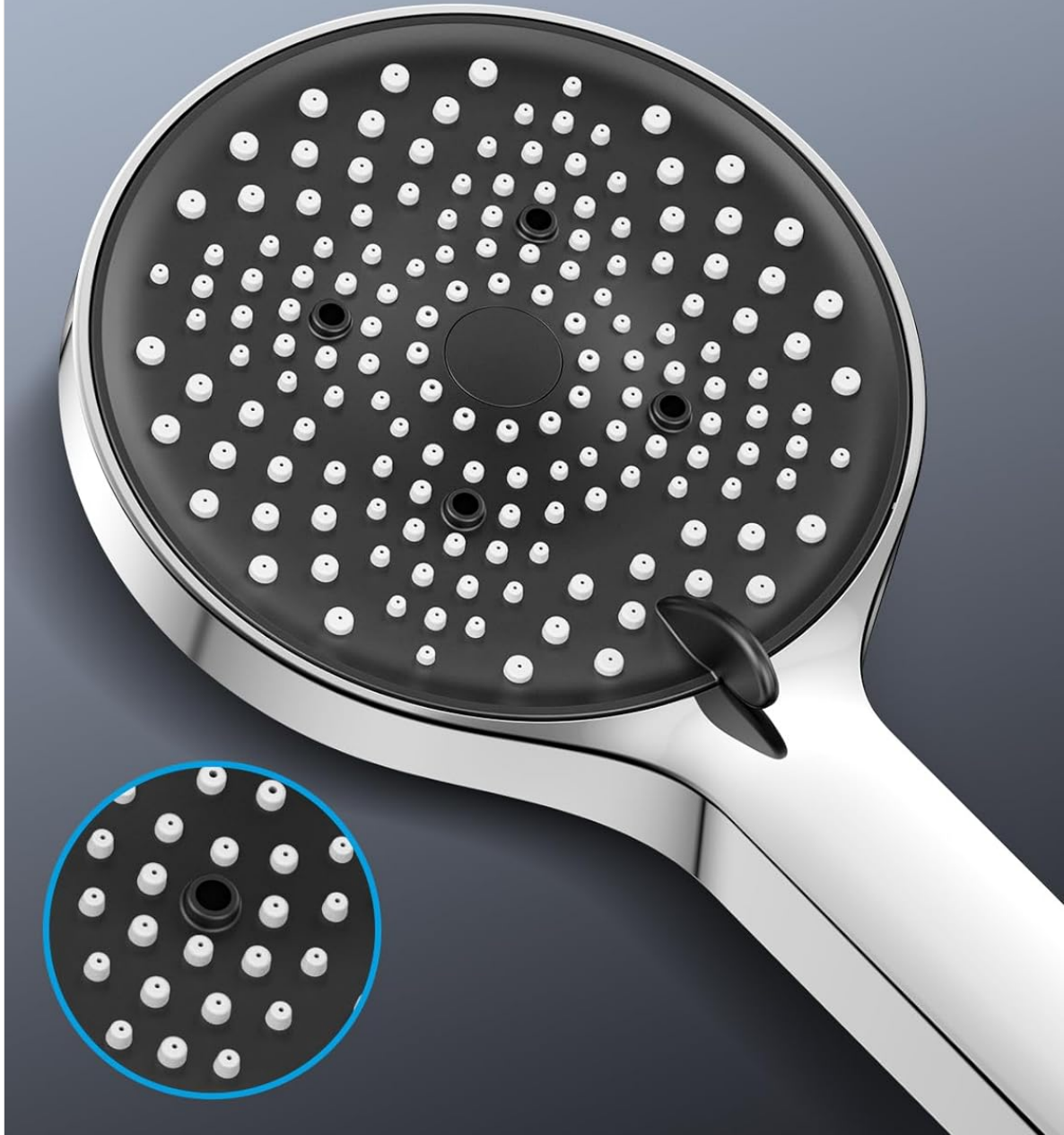


Figure 5: Anti-Scale Silicone Nozzles. A detailed view of the shower head's silicone nozzles, emphasizing their anti-scale properties. The image highlights how these flexible nozzles allow for easy removal of mineral deposits by simply wiping them with a soft cloth or finger.

6. TROUBLESHOOTING

Low Water Pressure:

If you experience lower than desired water pressure, the included water restrictor may be limiting the flow. This restrictor is designed to conserve water, but can be removed if higher pressure is preferred or necessary for your water system.

- **To Remove the Water Restrictor:** Unscrew the shower head from the hose. Carefully locate the orange water restrictor inside the shower head's connector. Use a small tool (like tweezers or a flathead screwdriver) to gently pry out the restrictor. Reattach the shower head, ensuring the sealing ring is properly in place.
- **Note:** Removing the restrictor will increase water flow and pressure, but may also increase water consumption.



Figure 6: Water Flow Comparison. This image compares water flow rates, illustrating how the included water restrictor can reduce water consumption by up to 40%. It shows a bucket filling with water, indicating 12.7 L/min without the restrictor and ≤8 L/min with the restrictor at 3 Bar pressure.

Leaks at Connection Point:

- Ensure the sealing ring is correctly seated within the shower head's connector.
- Tighten the connection by hand. If necessary, use a small amount of plumber's tape (sealing tape) around the hose threads before attaching the shower head.

7. SPECIFICATIONS

Feature	Detail
Brand	YEAUPE
Model Number	DCH7010CP
Product Dimensions (L x W x H)	25 x 13 x 12.7 cm
Weight	320 Grams
Color	Chrome
Style	Powerful Flow Shower Head
Finish	Polished
Material	Acrylonitrile Butadiene Styrene (ABS)
Shape	Round
Installation Method	Wall Mount
Number of Items	1
Hose Length (if included with variant)	1.6 Meters (for specific variants)
Special Features	Detachable, Anti-scale Silicone Nozzles
Number of Settings	6
Number of Jets	1 (referring to the main spray type)

8. WARRANTY AND SUPPORT

Specific warranty information for the YEAUPE High-Pressure Shower Head is not provided within this manual. Please refer to the product packaging, the retailer's website, or contact the manufacturer directly for warranty details.

For technical support or further assistance, please contact the seller or manufacturer through their official channels.