

TOTO SW4736#12

TOTO WASHLET S7A Electronic Bidet Toilet Seat Instruction Manual

Model: SW4736#12 | Brand: TOTO

PRODUCT OVERVIEW

Experience Enhanced Cleanliness

The TOTO WASHLET S7A Elongated Bidet Toilet Seat offers an advanced personal cleansing experience with warm water, replacing traditional toilet paper. It integrates innovative features for hygiene and comfort.

Key Features

- Instant and continuous warm water stream with AIR-IN WONDER WAVE.
- Automatic open/close lid, nightlight, and heated seat.
- EWATER+ system for wand and bowl cleaning, PREMIST for bowl surface.
- Illuminated touch button remote with 4-user memory, 5 spray settings, dryer, air deodorizer.
- Sleek contemporary lid design.
- Easy DIY installation, compatible with TOTO WASHLET+ toilets or standard elongated toilets.

Video: Join the Clean Revolution. This video provides a brief overview of the TOTO WASHLET S7A's features and benefits, highlighting its advanced cleansing capabilities.

SETUP AND INSTALLATION GUIDE

Before You Begin

Ensure you have a Ground Fault Circuit Interrupter (GFCI) 120V outlet available near the toilet.

What's Included & Required Tools

WHAT'S INCLUDED:



WASHLET



**Remote &
Wall Mount**



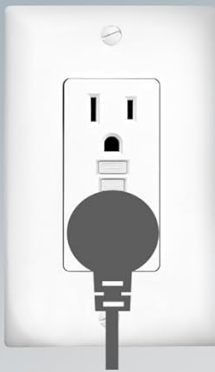
Bracket



Tee Connector

WHAT'S REQUIRED

**120V GFCI
Outlet**



Tools

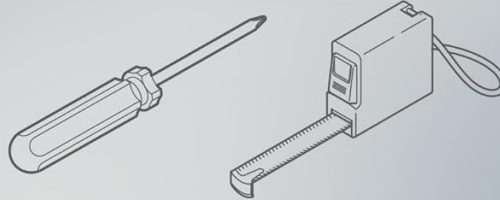


Image: Components included and tools required for TOTO WASHLET S7A installation. This image displays the components included with the TOTO WASHLET S7A: the bidet seat, a remote control with a wall mount, a mounting bracket, and a tee connector. Below these, it lists required items: a 120V GFCI outlet and common tools like a screwdriver and tape measure.

Compatibility

WASHLET FIT GUIDE

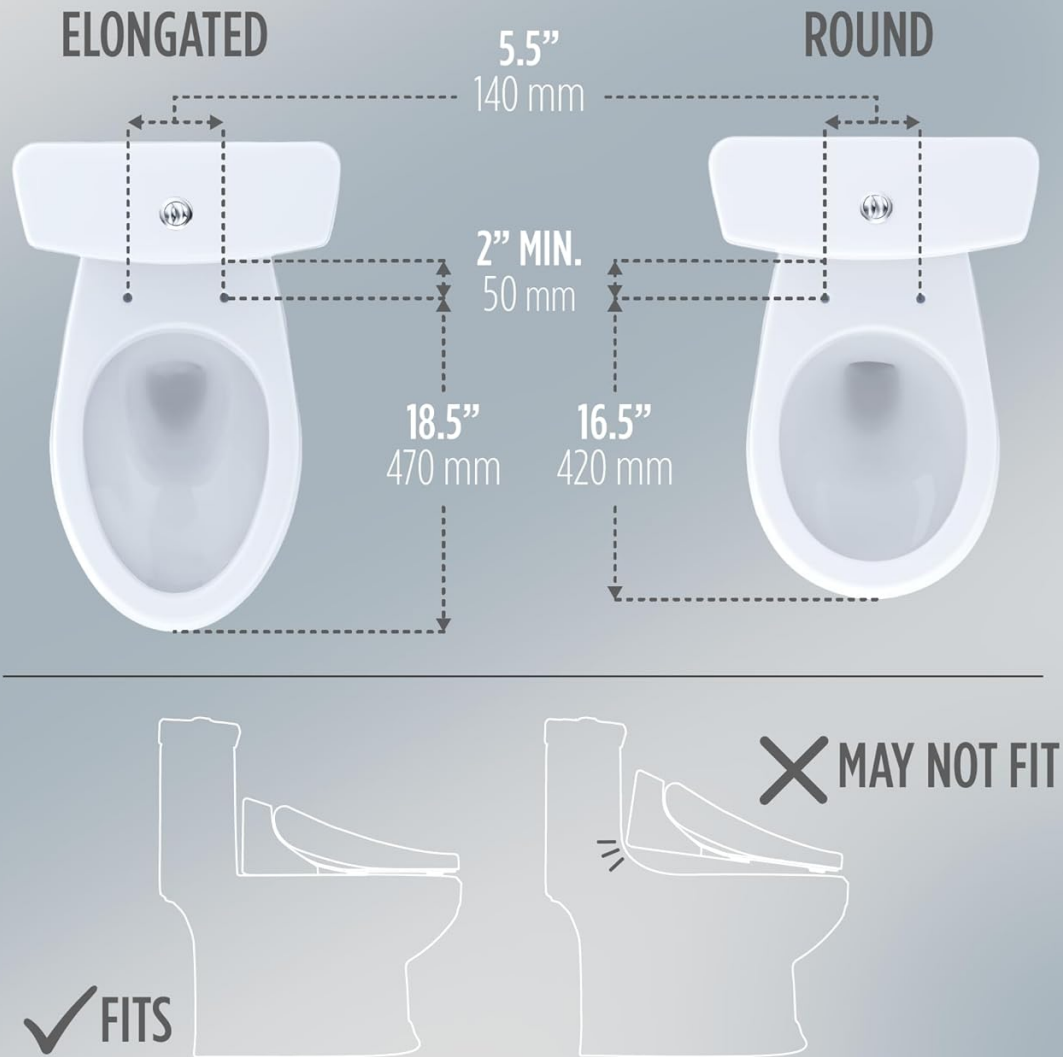


Image: TOTO WASHLET S7A compatibility with various toilet types. This image illustrates the compatibility of the TOTO WASHLET S7A. It shows the bidet seat fitting both TOTO WASHLET+ T40 toilets for a streamlined look with concealed connections, and most standard North American toilets using a conventional connection.

Installation Steps

Video: WASHLET Install Video. This official TOTO USA video provides a step-by-step guide for installing the WASHLET bidet seat. It covers preparing the toilet, attaching the mounting bracket, connecting the water supply, and securing the bidet seat.



Image: Four-panel image showing TOTO WASHLET S7A installation steps. This image illustrates the installation process. Panel 1 shows removing the old toilet seat. Panel 2 shows installing the mounting bracket. Panel 3 shows sliding the new WASHLET seat onto the bracket. Panel 4 shows connecting the water supply line.

Step 1: Remove Existing Toilet Seat

Use a screwdriver to loosen and remove the bolts securing your current toilet seat. Lift the old seat off the toilet bowl.

Step 2: Clean Toilet Surface

Thoroughly clean the area where the new bidet seat will be installed to ensure a secure fit.

Step 3: Install Mounting Bracket

Position the mounting bracket over the bolt holes on the toilet bowl. Insert the provided bolts and tighten them just enough to allow slight adjustment.

Step 4: Attach WASHLET Seat

Slide the WASHLET S7A bidet seat onto the mounting bracket until it clicks into place. Adjust the seat and bracket for proper alignment with the toilet bowl. Once aligned, fully tighten the mounting bolts.

Step 5: Connect Water Supply

Shut off the water supply to the toilet. Disconnect the existing supply line from the toilet tank. Install the provided T-connector to the fill valve. Reconnect the toilet's supply line to one end of the T-connector and attach the WASHLET's supply hose to the other end. Ensure all connections are hand-tightened to prevent leaks.

Step 6: Connect Power

Plug the WASHLET's power cord into a 120V GFCI outlet.

Step 7: Restore Water Supply

Slowly turn the water supply back on and check for any leaks.

OPERATING YOUR WASHLET S7A

Remote Control Functions

The WASHLET S7A is operated by a luxury-style illuminated touch button remote.



Image: Adjustable water spray and pressure settings for TOTO WASHLET S7A. This image illustrates the five adjustable water

spray and pressure settings of the TOTO WASHLET S7A: Rear Spray for effective cleansing, Soft Rear for gentle rinsing, Front Spray for delicate areas, Oscillating Spray where the wand moves back and forth, and an Adjustable Wand to find the perfect position.

Personal Settings

The remote allows users to control and set personalized water cleansing settings. It includes 2 user memory settings for quick access to preferred configurations.

Cleansing Modes

- **Rear Spray:** For effective posterior cleansing.
- **Soft Rear:** Provides a gentle posterior rinse.
- **Front Spray:** A soft stream designed for delicate anterior areas.
- **Oscillating Spray:** The wand moves back and forth for a wider cleansing area.
- **Pulsating Spray:** Delivers a rhythmic, massaging spray.

Adjust water pressure and wand position using the remote controls.

Drying Function

Activate the warm air dryer for a comfortable finish.

Heated Seat

The seat features adjustable heating for optimal comfort.

Nightlight

A gentle nightlight illuminates the toilet bowl for convenience in low light conditions.

Automatic Lid

The lid automatically opens and closes as users approach and depart, providing a hands-free experience.

CARE AND MAINTENANCE

EWATER+ Cleaning System

The EWATER+ system automatically mists the wand and toilet bowl with electrolyzed water, reducing the need for harsh cleaning chemicals and maintaining hygiene.

PREMIST Function

Before each use, the PREMIST function wets the surface of the toilet bowl, aiding in the removal of waste and promoting a cleaner bowl.

Self-Cleaning Wand

The wand self-cleans before and after each use.

WAND DOOR

PROTECTION FROM UNWANTED DEBRIS

All WASHLET models feature a door that conceals the wand when not in use, preventing unwanted debris from making contact. This feature is typically only found on higher end models of competitors.

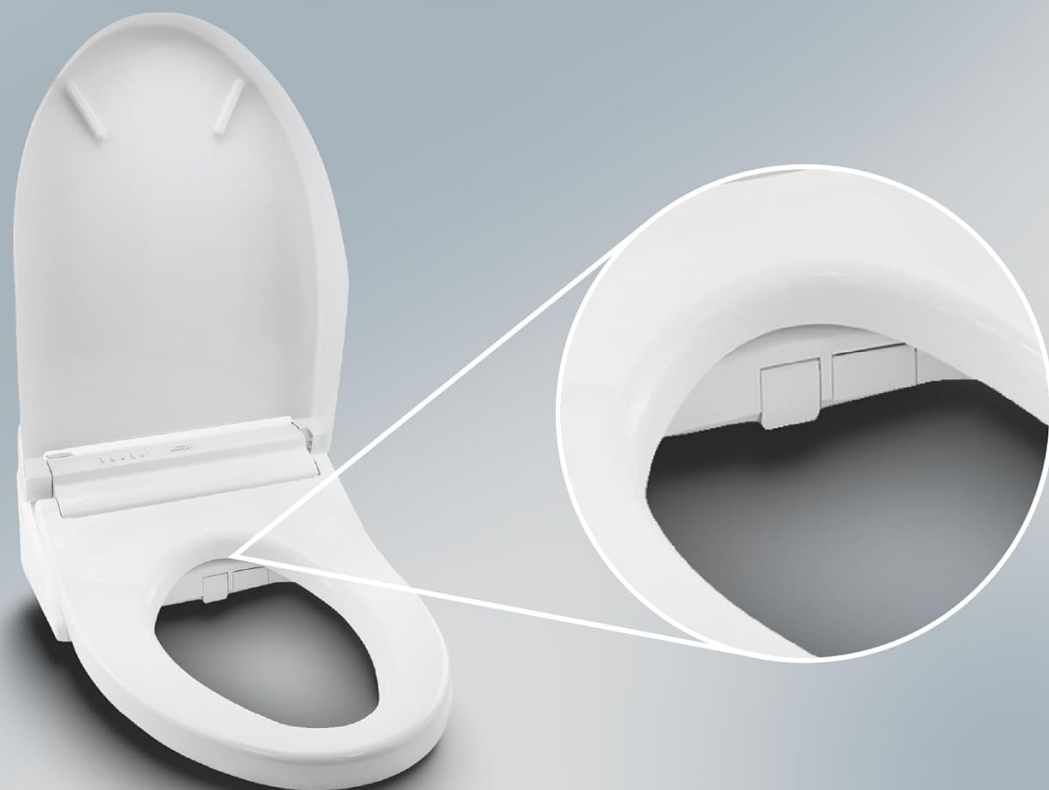


Image: Wand door for protection from debris on TOTO WASHLET S7A. This image highlights the wand door feature of the WASHLET, which conceals the wand when not in use, protecting it from unwanted debris and maintaining hygiene. This feature is typically found on higher-end bidet models.

QUICK RELEASE

Easily remove your WASHLET
for simplified cleaning



Image: Quick release button for simplified cleaning of TOTO WASHLET S7A. This image shows the quick-release button on the WASHLET S7A, allowing for easy removal of the bidet seat from the toilet for simplified and thorough cleaning.

General Cleaning

For external cleaning, use a soft, damp cloth and mild, non-abrasive cleaner. Avoid harsh chemicals that could damage the finish.

The quick-release button allows for easy removal of the WASHLET seat for thorough cleaning of the toilet bowl and seat area.

TROUBLESHOOTING

Common Issues and Solutions

For immediate assistance, please refer to the comprehensive owner's manual or contact TOTO customer support.

No Water Spray

Ensure the seat sensor is engaged (you must be seated or apply pressure to the seat). Check that the water supply valve is fully open.

Weak Water Pressure

Adjust the water pressure setting on the remote control. Ensure the water supply valve is fully open.

No Heat

Verify that the heated seat and warm water settings are activated on the remote. Check the power connection and GFCI outlet.

Wand Not Extending

The wand extends only when the seat sensor is engaged. Ensure the WASHLET is powered on.

PRODUCT SPECIFICATIONS

- Color: Sedona Beige
- Brand: TOTO
- Material: Plastic
- Style: Contemporary Lid
- Shape: Oval
- Product Dimensions: 20.88"L x 15.06"W
- Item Weight: 15 Pounds
- UPC: 739268436695
- Manufacturer: TOTO
- Part Number: SW4736#12
- Size: Elongated
- Included Components: Electronic Bidet Seat, Installation Hardware

WARRANTY AND CUSTOMER SUPPORT

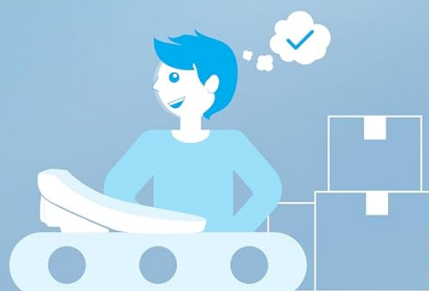
TOTO is committed to robust quality inspections and reassuring customer service support. Every new product undergoes rigorous testing for water and electrical functionality before shipment.

QUALITY & CUSTOMER CARE

From the assembly line to months after purchase, TOTO is committed to robust quality inspections and reassuring customer service support.

CAREFULLY INSPECTED

Every new product undergoes quality testing for water and electrical functionality before its shipped.



GUARANTEED SUPPORT

Full customer service support is available for phone, email and chat. We answer over 90% of calls within 60 seconds.

Phone: 1-888-583-4536
Email: techsupport@toto.com
Hours: 8am - 8pm EST, Mon-Fri



Image: TOTO Quality & Customer Care information. This image highlights TOTO's commitment to quality and customer care. It states that every new product undergoes water and electrical functionality testing before shipment. It also provides customer service contact information: Phone: 1-888-583-4536, Email: techsupport@toto.com, Hours: 8am - 8pm EST, Mon-Fri.

Contact Information

For full customer service support, including phone, email, and chat, please use the following:

- Phone: 1-888-583-4536
- Email: techsupport@toto.com
- Hours: 8am - 8pm EST, Mon-Fri

Product Durability

PRODUCT DURABILITY

Every WASHLET model undergoes rigorous testing to ensure superior durability of its features and functions throughout its lifetime.



WAND TESTING

Every WASHLET model undergoes 75,000 wand function cycles during development, testing for durability and performance.



SEAT WEIGHT TESTING

All of our WASHLET seats are engineered for reliable performance and stress tested repeatedly with various weight loads.

Image: TOTO WASHLET S7A product durability testing details. This image illustrates the rigorous testing for product durability. It shows 'Wand Testing' with 75,000 wand function cycles and 'Seat Weight Testing' for reliability under various weight loads. Every WASHLET model undergoes rigorous testing to ensure superior durability of its features and function throughout its lifetime. This includes 75,000 wand function cycles and seat weight testing under 1,250 N (281 lb / 127 kg) load.