

Inrico B01

Inrico B01 Wireless Bluetooth Microphone Speaker User Manual

Model: B01

1. PRODUCT OVERVIEW

The Inrico B01 is a wireless Bluetooth microphone speaker designed for use with Android phones and network radios, specifically optimized for Push-to-Talk (PTT) applications like Zello and Real PTT. It offers enhanced communication capabilities with features such as a large PTT button, group switch functionality, and an SOS button.



Front view of the Inrico B01 Wireless Bluetooth Microphone Speaker.

2. PACKAGE CONTENTS

Ensure all items are present in the package:

- Inrico B01 Microphone Speaker (1 unit)
- USB Charger (1 unit)
- USB Data Cable (1 unit)
- Lithium Ion Battery (1 unit, pre-installed or separate)

3. PRODUCT FEATURES AND CONTROLS

Familiarize yourself with the various buttons and indicators on your Inrico B01 device:



Diagram illustrating the button layout and features of the Inrico B01.

- **1. SOS Button:** (This function works with W7/W7plus only)
- **2. External Headphones Port:** For connecting external audio devices.
- **3. Group Switch:** (This function works with W7/W7plus only)
- **4. PTT (Push-to-Talk) Button:** Large button for initiating voice transmissions.
- **5. Volume +:** Increases speaker volume.
- **6. Volume -:** Decreases speaker volume.
- **TX/RX Indicator:** Light indicator for transmission (TX) and reception (RX) status.

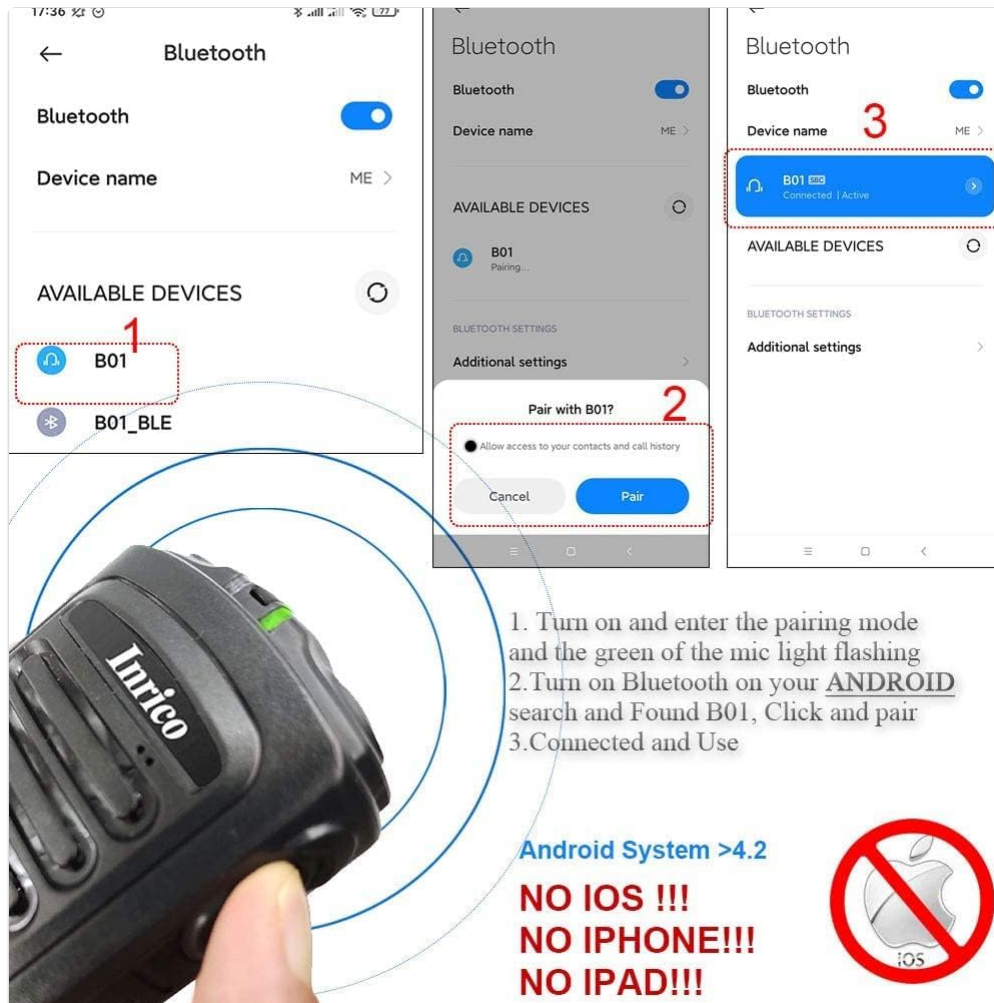
4. SETUP GUIDE

4.1 Charging the Device

Before first use, fully charge your Inrico B01 using the provided USB charger and data cable. Connect the USB cable to the device's charging port and the charger to a standard power outlet. The TX/RX indicator may show charging status.

4.2 Bluetooth Pairing with Android Devices

Important Note: This device is compatible ONLY with Android systems (Android 5.1 and above). It DOES NOT support iOS devices (iPhone, iPad).



Visual guide for pairing the Inrico B01 with an Android device.

1. Turn on the Inrico B01 and enter pairing mode. The green light on the microphone will flash.
2. On your Android phone, navigate to the Bluetooth settings.
3. Search for available devices. You should find "B01" in the list.
4. Select "B01" and confirm the pairing request. You may need to allow access to contacts and call history.
5. Once connected, the device status will show "Connected" or "Active".

4.3 Application Compatibility

The Inrico B01 is designed to work with Push-to-Talk (PTT) applications such as Zello and Real PTT. It is compatible with Android 5.1 and higher versions, including Android 6.0, Android 7.0, and above, on devices like 3G-W7, 4G-W7plus, and other Android walkie-talkies/phones.

Compatible with talking app

Compatible with android system > 5.0 or higher, compatible with android mobile phone and radios. work with realptt and zello and wechat talk app.

(please notice that the zello & other talk app may 50% compatible)



The Inrico B01 is compatible with Android 5.0+ and PTT applications like RealPTT.

Note: It does not support Echolink or Eschat. Other talk apps may have limited compatibility (approx. 50%).

5. OPERATING INSTRUCTIONS

5.1 Using the PTT Function

After successful Bluetooth pairing and configuring your PTT application (e.g., Zello), press and hold the large PTT button (4) on the side of the Inrico B01 to transmit your voice. Release the button to listen. The TX/RX indicator will show when you are transmitting.

For Zello users: If you experience issues with the PTT button, ensure you have assigned the PTT button within the Zello app settings under "Compatible PTT Buttons" and selected the desired channel under "Button Contact."

5.2 Volume Adjustment

Use the Volume + (5) and Volume - (6) buttons on the side of the device to adjust the speaker's output volume.

5.3 SOS and Group Switch Functions

The SOS button (1) and Group Switch (3) functionalities are specifically designed to work with Inrico W7 and W7plus mobile radios. These features may not be available or fully functional when used with other Android devices or applications.

6. SPECIFICATIONS

Feature	Detail
Model Number	B01
Bluetooth Version	4.2
Compatible OS	Android 5.1 and above (NOT iOS)
Connectivity Technology	Bluetooth, USB
Microphone Form Factor	Handheld
Polar Pattern	Omnidirectional
Signal-to-Noise Ratio	78 dB
Noise Level	78 dB
Battery Type	Lithium Ion
Battery Capacity	2000 mAh, 3.7 V
Talking Time	Approx. 14 hours
PTT Time	Approx. 14 hours
Standby Time	Over 90 hours
Item Weight	9.2 ounces (approx. 260g)
Dimensions (L x W x H)	7.28 x 5.08 x 3.46 inches (Package)
FCC ID	2AIV6-B01
Country of Origin	China



Physical dimensions of the Inrico B01: 90mm height, 63mm width, 25mm depth, weighing 84g.



Battery specifications for the Inrico B01, showing 2000 mAh capacity and estimated usage times.

7. MAINTENANCE

To ensure the longevity and optimal performance of your Inrico B01, follow these maintenance guidelines:

- **Cleaning:** Use a soft, dry cloth to clean the device. Avoid using harsh chemicals or abrasive cleaners.
- **Storage:** Store the device in a cool, dry place away from direct sunlight and extreme temperatures.
- **Battery Care:** For extended storage, charge the battery to approximately 50% to preserve its lifespan.
- **Water Resistance:** The device is not waterproof. Avoid exposure to water or excessive moisture.

8. TROUBLESHOOTING

If you encounter issues with your Inrico B01, refer to the following common problems and solutions:

- **Device not pairing with Android phone:**

- Ensure Bluetooth is enabled on your Android phone.
- Make sure the Inrico B01 is in pairing mode (green light flashing).
- Verify that your Android OS version is 5.1 or above.
- Restart both the Inrico B01 and your Android phone, then attempt pairing again.
- Forget the device in your phone's Bluetooth settings if it was previously paired, then re-pair.

- **PTT button not working with Zello/Real PTT:**

- Confirm the Inrico B01 is successfully paired and connected to your phone via Bluetooth.
- Within the Zello app, go to *Options > Push-to-talk buttons > Compatible PTT Buttons* and ensure the B01 is selected and configured.
- Verify that the correct channel is selected under *Button Contact* in your PTT app settings.
- Ensure the PTT app has necessary permissions (microphone, Bluetooth) on your Android device.

- **No sound from the speaker or microphone:**

- Check the volume levels on both the Inrico B01 and your Android phone.
- If using Zello, ensure "Bluetooth mode" is selected on the Zello call interface if you are experiencing no sound.
- Confirm the device is fully charged.

- **SOS or Group Switch functions not working:**

- These functions are primarily designed for Inrico W7/W7plus mobile radios. They may not be supported or fully functional with standard Android phones or other applications.

9. WARRANTY AND SUPPORT

For warranty information, please refer to the documentation included with your purchase or visit the official Inrico website. For technical support or further assistance, please contact Inrico customer service through their official channels.

FCC Compliance: This device complies with Part 15 of the FCC Rules. Operation is subject to the following two conditions: (1) This device may not cause harmful interference, and (2) this device must accept any interference received, including interference that may cause undesired operation. FCC ID: 2AIV6-B01.

10. ADDITIONAL NOTES

10.1 Belt Clip and Charging Cradle Compatibility

Please note that newer versions of the B01 may feature a slightly longer belt clip (74mm slot depth) compared to older versions (58mm slot depth). This difference might affect compatibility with older charging cradles designed for the shorter belt clip. The new version also features a USB-C charging port.



Comparison of new and old version belt clips and charging cradle slot depths.

10.2 Magnetic Holder Compatibility

The Inrico B01 features a metal sheet on its battery cover, allowing it to work seamlessly with car magnetic holders for convenient mounting.

Metal Sheet on battery cover work with car Magnet Holder



The Inrico B01's metal sheet on the battery cover enables compatibility with magnetic car holders.

10.3 Mobile Radio Compatibility

The Inrico B01 is also compatible with specific mobile radios such as the TM-7 and TM-7plus, extending its utility beyond just smartphones.

TM-7 7plus Mobile Radio Compatiable



The Inrico B01 can be paired with mobile radios like the TM-7plus.

