



Manuals.plus /

› Novilla /

› Novilla Queen Bed Frame Instruction Manual

## Novilla N-F10016-Q-WH

# Novilla Queen Bed Frame Instruction Manual

Model: N-F10016-Q-WH

Brand: Novilla

## INTRODUCTION

---

The Novilla Queen Bed Frame is a modern and functional metal platform bed designed for durability and ease of use. Featuring sturdy wood slat support and a heavy-duty metal frame, it eliminates the need for a box spring. This manual provides detailed instructions for assembly, care, and troubleshooting to ensure optimal performance and longevity of your bed frame.



Image: Assembled Novilla Queen Bed Frame in a bedroom.

## SAFETY INFORMATION

---

Please read and understand all safety warnings before assembly and use. Failure to follow these instructions may result in injury or damage to the product.

- **Careful Handling:** Exercise caution when handling and assembling the bed frame due to its weight and potential sharp edges.
- **Weight Limit:** Do not exceed the maximum weight limit of **1200 lbs (544 kg)** for this bed frame. Exceeding this limit can compromise the structural integrity and lead to collapse.
- **Assembly:** Ensure all bolts and screws are securely tightened before use. Periodically check and re-tighten fasteners as needed.
- **Children:** Keep small parts and packaging materials away from children during assembly to prevent choking hazards.
- **Floor Protection:** The bed frame legs are equipped with protective pads. Ensure these pads are intact to prevent scratching your flooring.

## PACKAGE CONTENTS

Before beginning assembly, verify that all components listed below are present and undamaged. If any parts are missing or damaged, please contact Novilla customer support.

Part	Description	Quantity
Metal Frame Components	Various metal pieces forming the bed frame structure (A, B, C, D, E, F)	As per diagram
Wood Slats	Wooden planks for mattress support (G)	2 sets
Tools	Assembly tools (e.g., Allen wrench)	1 set
Instructions	Detailed assembly manual	1

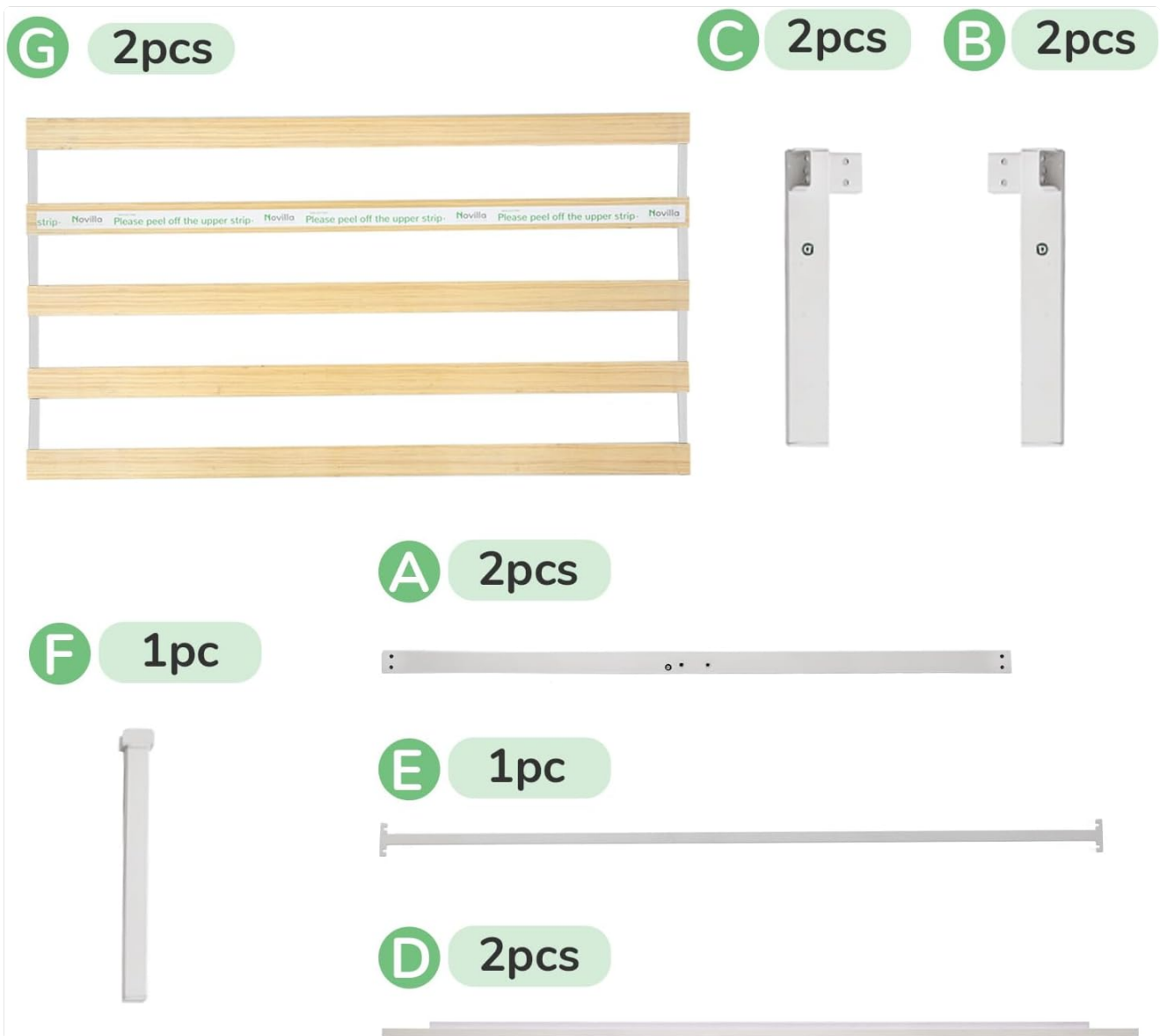


Image: Detailed view of all included parts and their labels.

## SETUP AND ASSEMBLY

The Novilla bed frame is designed for quick and easy assembly, typically taking around 20 minutes with one person. Follow these steps carefully:

- Step 1: Put up the frame.** Begin by connecting the main metal frame components according to the provided diagram. Ensure all connections are aligned before tightening.

- Step 2: Install the support frame.** Attach the central support legs and beams to the main frame. These provide crucial stability.
- Step 3: Spread out battens (slats).** Unroll or place the wooden slats across the bed frame. The slats are designed with noise-reducing strips and anti-slip patches for a stable and quiet sleep surface.
- Step 4: Tear off the strap.** Remove any securing straps from the slats once they are properly positioned.

Ensure all bolts are fully tightened after all components are in place. Do not overtighten.

## One person to assemble

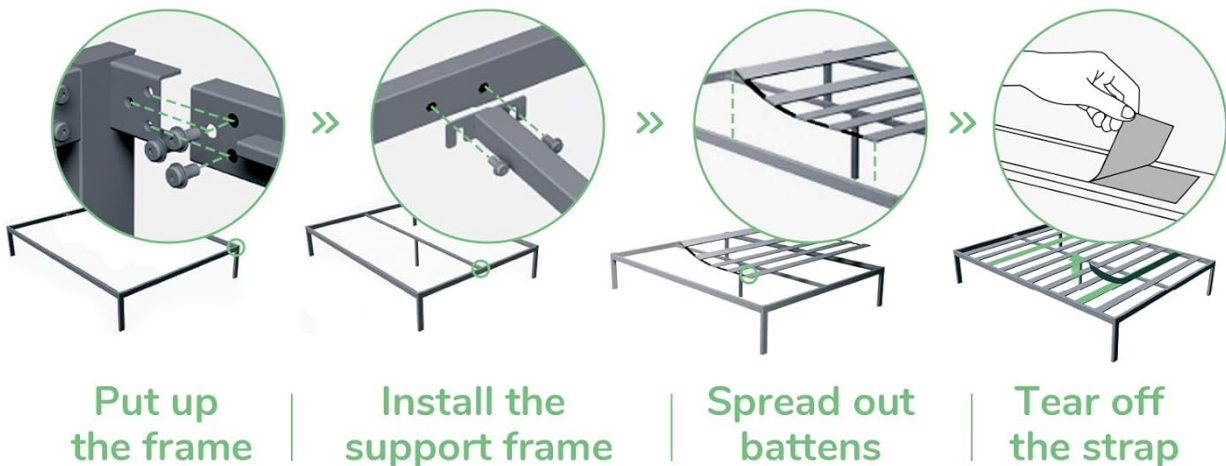


Image: Visual guide for the assembly process.



Image: Fully assembled bed frame structure.

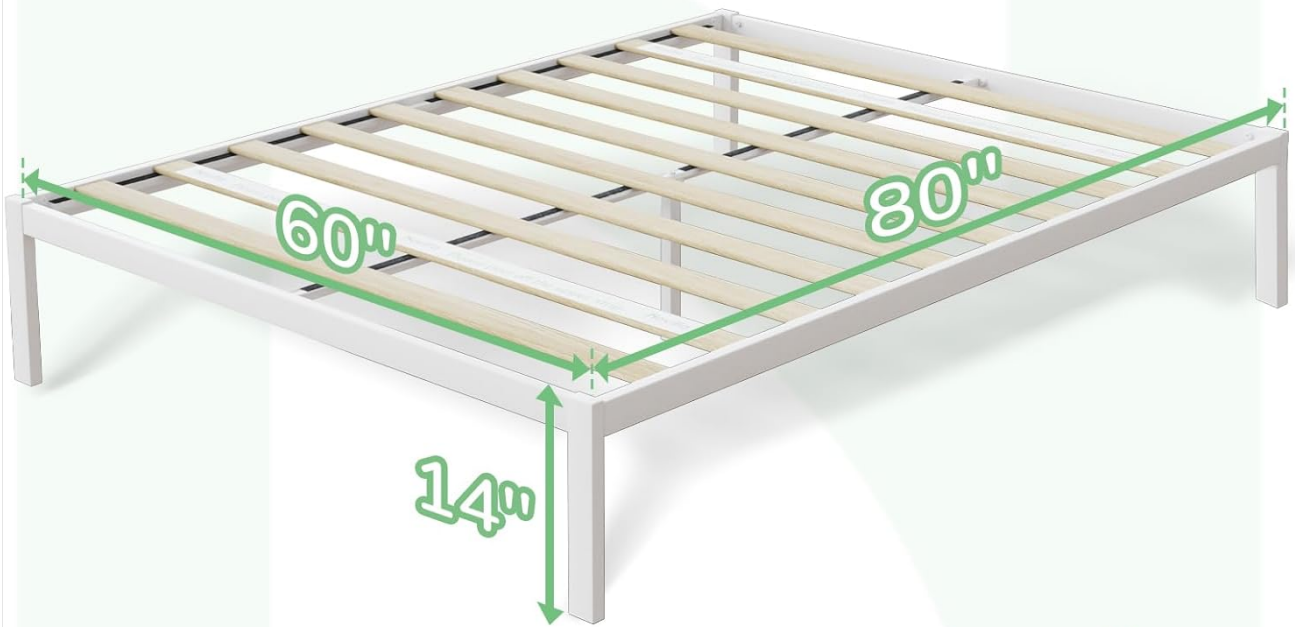
## OPERATING (FEATURES AND USAGE)

---

The Novilla Queen Bed Frame is designed to provide a stable and comfortable foundation for your mattress without the need for a box spring. Its key features enhance both functionality and user experience:

- **Durable & Sturdy Construction:** The reinforced steel construction and extra central leg provide robust support, capable of holding up to 1200 lbs. This ensures a secure and stable sleeping surface, minimizing wobbling or shaking.
- **Noise Reduction:** The bed slats are equipped with noise-reducing strips and anti-slip patches. These features work together to prevent creaking and shifting, contributing to a quiet sleep environment.
- **Generous Under-Bed Storage:** With 12 inches of clearance from the ground, this platform bed frame offers ample space for storing items, helping to keep your bedroom organized. The elevated design also allows for easy cleaning underneath, including access for robot vacuums.
- **Floor Protection:** Protective pads on the bed frame legs prevent scratches and damage to your flooring.
- **Simple Design:** The minimalist design of the bed frame allows it to seamlessly integrate with various bedroom decors.

## Dimension & Capacity



QUEEN SIZE ▲

700  
lbs

Image: Dimensions and weight capacity of the bed frame.

High bottom design,  
more space for accommodation



Image: Under-bed storage space.

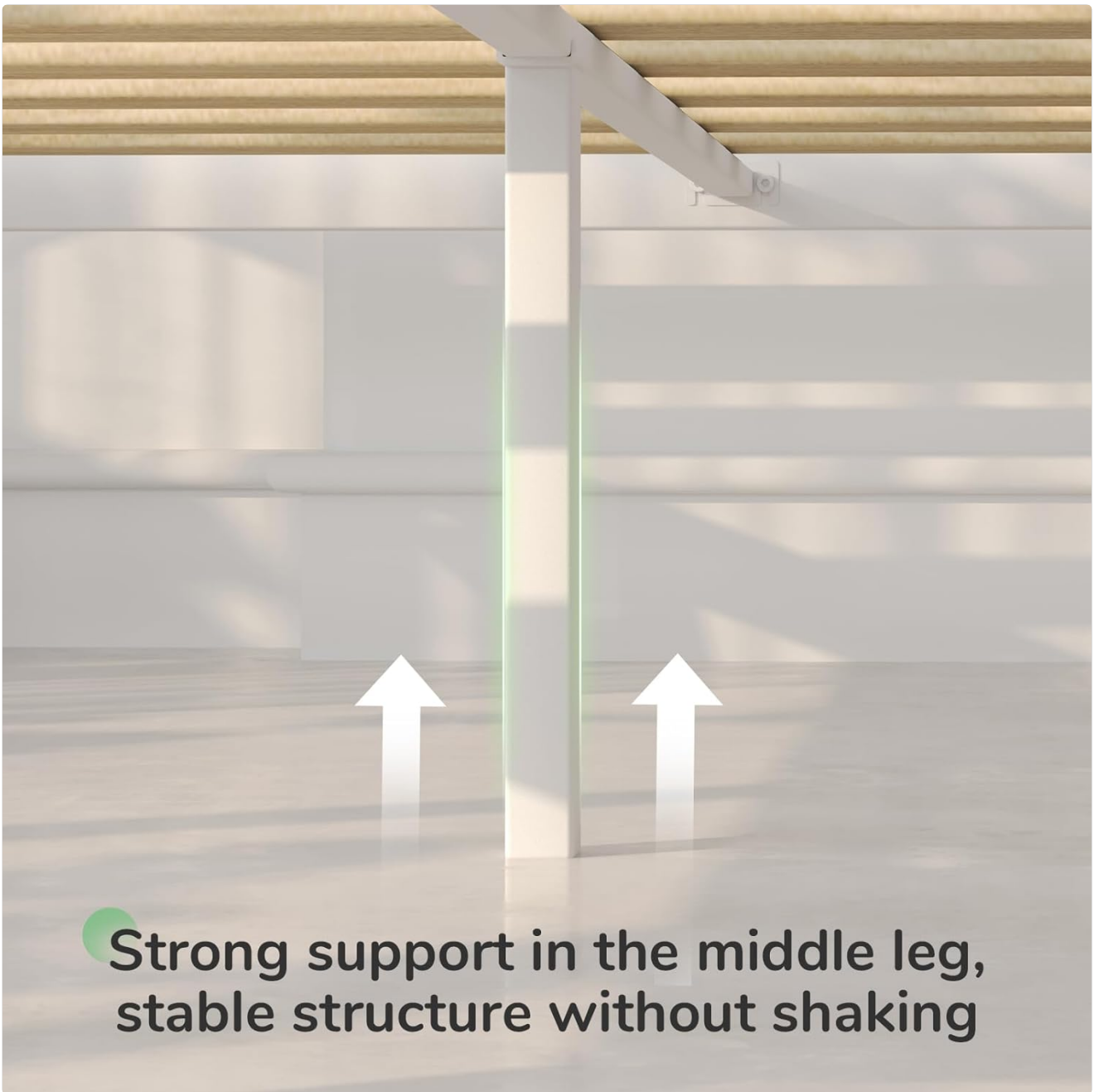


Image: Middle leg support for enhanced stability.



## Bed legs with anti-scratch pad, carefully protect your floor

Image: Anti-scratch pads on bed frame legs.

### MAINTENANCE

---

Proper maintenance will help preserve the appearance and structural integrity of your Novilla bed frame.

- **Cleaning:** The sleek metal construction can be easily cleaned with a damp cloth. Avoid using harsh chemicals or abrasive cleaners, which may damage the finish.
- **Regular Inspection:** Periodically check all bolts and connections to ensure they remain tight. Re-tighten any loose fasteners to maintain stability and prevent noise.
- **Slat Care:** Ensure the wooden slats are free from moisture and extreme temperature changes to prevent warping or damage.

### TROUBLESHOOTING

---

If you encounter any issues with your Novilla bed frame, refer to the following common problems and solutions:

Problem	Possible Cause	Solution
Bed frame is wobbly or unstable.	Loose bolts or improper assembly.	Check all connections and tighten any loose bolts using the provided tools. Ensure all parts are correctly aligned as per the assembly instructions.
Squeaking or creaking noises.	Loose connections, slats shifting, or friction between components.	Re-tighten all bolts. Ensure the wooden slats are properly seated and the noise-reducing strips are intact. If necessary, apply a small amount of silicone spray to contact points between metal parts.
Mattress slides on the frame.	Lack of friction between mattress and slats.	Ensure the anti-slip patches on the slats are correctly positioned. You may also place a non-slip mat between the mattress and the slats for added grip.
Missing or damaged parts upon arrival.	Shipping damage or packaging error.	Do not attempt to assemble. Contact Novilla customer support immediately with your purchase details for assistance and replacement parts.

## SPECIFICATIONS

Attribute	Detail
Size	Queen
Product Dimensions	79.92"L x 60.24"W x 13.98"H
Special Feature	No Box Spring Needed
Color	White
Finish Type	Lacquered
Included Components	Metal & Wood Slats, Tools, Instructions
Compatible With Mattress Size	Twin, Full, Queen, King (frame is Queen size)
Brand	Novilla
Product Care Instructions	Damp cloth
Assembly Required	Yes
Ground To Item Distance	12 Inches
Manufacturer	Novilla
UPC	840282721343
Item Weight	46.6 pounds
Item Model Number	N-F10016-Q-WH

## WARRANTY AND SUPPORT

---

For any questions regarding your Novilla bed frame, including warranty information, missing parts, or assembly assistance, please contact Novilla customer support. Refer to your purchase documentation for specific warranty terms and contact details.

You can often find support information on the official Novilla website or through the retailer where the product was purchased.