

SHREYANS SRS-406T

SHREYANS SRS406T Label Barcode Printer User Manual

Model: SRS-406T

1. INTRODUCTION AND OVERVIEW

The SHREYANS SRS406T is a versatile label barcode printer designed for various applications, including industrial, commercial, and household use. This printer supports both **Direct Thermal** and **Thermal Transfer** printing methods, allowing for flexibility in label material and longevity requirements. It is engineered for high-volume printing, capable of producing over 50,000 labels per day, and features a robust ABS plastic body with a Japanese-designed print head. This manual provides essential information for setting up, operating, maintaining, and troubleshooting your SRS406T printer to ensure optimal performance.

2. Connect the power adaptor to the printer's power port and then to a power outlet.
3. Connect the USB cable from the printer to an available USB port on your computer.

3.2. Loading Labels

The SRS406T printer supports label widths from 0.78 inches to 4 inches. Follow these general steps to load labels:

1. Open the printer cover.
2. Adjust the label guides to match the width of your label roll.
3. Insert the label roll onto the spindle and feed the leading edge of the labels through the printer mechanism until it protrudes slightly from the front output slot.
4. Close the printer cover.

3.3. Driver Installation

The printer is compatible with Windows, Mac, and Linux operating systems. Use the provided installation disk or download the latest drivers from the official SHREYANS website.

1. Insert the installation disk into your computer's CD/DVD drive or run the downloaded driver setup file.
2. Follow the on-screen instructions to complete the driver installation.
3. After installation, restart your computer if prompted.

3.4. Setting Printer Properties

Access your computer's printer settings to configure the label size, print density, and printing mode (Direct Thermal or Thermal Transfer) according to your specific label and ribbon type.



Image 3.1: Visual representation of the easy setup process: Load labels, Install driver, Set printer properties, Start to Print.

4. OPERATING INSTRUCTIONS

4.1. Printing Modes: Thermal Transfer vs. Direct Thermal

The SRS406T offers two printing modes:

- **Direct Thermal:** This method uses heat-sensitive labels that darken when heated by the print head. No ribbon is required. Ideal for temporary labels like shipping labels or receipts.
- **Thermal Transfer:** This method uses a ribbon that is melted onto the label by the print head, creating a durable, long-lasting print. Suitable for permanent labels, product identification, or asset tracking.

Ensure the correct printing mode is selected in your printer settings to match the type of labels and ribbon (if any) you are using.

2 IN 1 PRINTER, DIRECT THERMAL + THERMAL TRANSFER

ALL IN ONE : USEFUL FOR PRINTING ON
POLYESTER LABELS AS WELL AS DT LABELS



Image 4.1: The SRS406T printer supports both Direct Thermal and Thermal Transfer printing for polyester and DT labels.

4.2. Printing Labels

After installing drivers and loading labels, you can begin printing from your preferred application (e.g., BarTender Lite, shipping software, word processor). The printer is compatible with various platforms and label types, including shipping labels, product labels, barcode labels, and MRP tags.

1. Open the document or software from which you wish to print.
2. Select the SHREYANS SRS406T as your printer.
3. Verify printer settings such as label size, orientation, and print quality.
4. Initiate the print command.



Image 4.2: The printer delivers clear and high-speed output, capable of printing 4x6" labels at 4320 labels/hour and 2x1" labels at 21000 labels/hour.

WIDE COMPATIBILITY

WITH MULTIPLE PLATFORMS AND LABELS



Image 4.3: The SHREYANS SRS406T printer offers wide compatibility with various e-commerce and shipping platforms.

5. MAINTENANCE

Regular maintenance ensures the longevity and optimal performance of your printer.

- **Cleaning the Print Head:** Periodically clean the print head with an alcohol swab or a specialized print head cleaning pen to remove dust, adhesive residue, or debris. Ensure the printer is turned off and cooled down before cleaning.
- **Cleaning the Platen Roller:** Clean the platen roller (the rubber roller that feeds the labels) with an alcohol swab to prevent label jams and ensure smooth feeding.
- **Exterior Cleaning:** Wipe the exterior of the printer with a soft, damp cloth. Avoid using harsh chemicals or abrasive cleaners.

6. TROUBLESHOOTING

This section addresses common issues you might encounter with your SHREYANS SRS406T printer.

- **Printer Not Responding:**

- Ensure the power cable and USB cable are securely connected.
- Check if the printer is powered on.
- Verify that the correct printer driver is installed and selected in your computer's settings.
- Try restarting both the printer and your computer.

- **Poor Print Quality:**

- Clean the print head as described in the Maintenance section.
- Adjust print density settings in your printer preferences.
- Ensure you are using the correct type of labels and ribbon (for thermal transfer) for your application.
- Check for any physical damage to the print head.

- **Labels Skipping or Jamming:**

- Ensure labels are loaded correctly and the label guides are adjusted to the label width.
- Clean the platen roller.
- Check for any foreign objects inside the printer.
- Calibrate the printer for the specific label size if available in the driver settings.

- **Printer Not Printing Direct Thermal Labels:**

- Verify that the printer settings are configured for Direct Thermal mode.
- Ensure you are using actual direct thermal labels, which are heat-sensitive.

If you encounter issues not covered here, please contact customer support.

7. SPECIFICATIONS

| Feature | Specification |
|--------------------------------|----------------------------------|
| Model Number | SRS-406T |
| Product Dimensions | 24D x 25W x 10H Centimeters |
| Item Weight | 4.53 Kilograms (4 kg 530 g) |
| Printing Technology | Thermal Transfer, Direct Thermal |
| Connectivity Technology | USB |
| Hardware Interface Type | USB |
| Number of USB Ports | 1 |
| Maximum Media Size | 10 centimeters (4 inches) |
| Print Media | Labels |
| Operating System Compatibility | Windows, Mac, Linux |
| Max Print Speed (Monochrome) | 32 ppm (pages per minute) |
| Printer Output | Monochrome |

| Feature | Specification |
|---------------------|--|
| Dual-sided printing | Yes |
| Included Components | Printer, USB Cable, Power Adaptor, Installation Disk, Label Roll x 1 Qty |

8. WARRANTY AND SUPPORT

8.1. Warranty Information

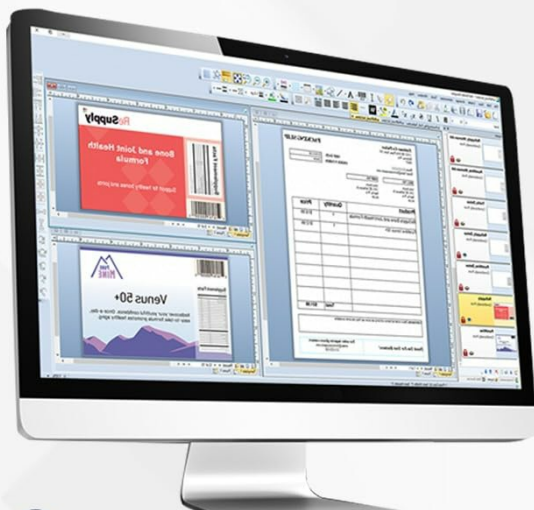
The SHREYANS SRS406T Label Barcode Printer comes with a **1-Year Warranty** from the date of purchase. This warranty covers manufacturing defects and ensures repair or replacement of faulty components under normal usage conditions. Please retain your purchase receipt as proof of warranty.

8.2. Customer Support

For any technical assistance, driver installation queries, or troubleshooting support, SHREYANS offers **24/7 Customer Care**. You can reach our support team through the contact information provided on the official SHREYANS website or the product packaging. Our experts are available to assist you.

FREE **LABEL EDIT** **SOFTWARE**

CUSTOMER CARE
SUPPORT 24/7


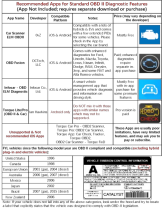





WE CAN DO IT FOR YOU, CONTACT OUR EXPERTS NOW !



Image 8.1: SHREYANS provides 24/7 customer care support for assistance with your printer.

Related Documents - SRS-406T

| | |
|---|--|
|  | <p>VIZIO VSB200 High Definition Sound Bar User Manual</p> <p>Comprehensive user manual for the VIZIO VSB200 High Definition Sound Bar, covering installation, setup, operation, safety instructions, troubleshooting, and specifications.</p> |
|  | <p>OBDCheck BLE+ User Guide: App Selection, Connection, and Advanced Diagnostics</p> <p>Comprehensive user guide for the OBDCheck BLE+ diagnostic tool, detailing app selection, connection procedures for iOS and Android devices, and compatibility with various vehicles and advanced diagnostic features. Includes setup instructions for popular apps like Car Scanner, OBD Fusion, Torque, BimmerCode, and more.</p> |
|  | <p>VIZIO VSB201 Quick Start Guide</p> <p>Get started quickly with your VIZIO VSB201 Sound Bar. This guide provides essential setup instructions, safety information, troubleshooting tips, and specifications for your audio device.</p> |
|  | <p>VIZIO VHT210 User Manual - Setup, Operation, and Troubleshooting</p> <p>Comprehensive user manual for the VIZIO VHT210 High Definition Sound Bar System, covering setup, connections, remote control, operation, maintenance, troubleshooting, specifications, and warranty information.</p> |
|  | <p>VIZIO VSB200 User Manual: Setup, Operation, and Troubleshooting Guide</p> <p>Comprehensive user manual for the VIZIO VSB200 Sound Bar, covering installation, connections, operation, SRS features, troubleshooting, specifications, and warranty information.</p> |

