

[Manuals.plus](#) /

> [HOIGY](#) /

> HOIGY Waterfall Bathroom Sink Faucet, Matte Black, Model HYBF-01-B Instruction Manual

HOIGY HYBF-01-B

HOIGY Waterfall Bathroom Sink Faucet

MATTE BLACK, MODEL HYBF-01-B INSTRUCTION MANUAL

Introduction

This manual provides comprehensive instructions for the installation, operation, and maintenance of your HOIGY Waterfall Bathroom Sink Faucet, Model HYBF-01-B. This widespread faucet features a unique waterfall spout design with a 3-layer metal filter for a smooth, splash-proof water flow. It includes two lever handles for precise control over hot and cold water temperature and flow.



Image: The HOIGY Waterfall Bathroom Sink Faucet in Matte Black, showcasing its main components including the spout, two handles, and the matching pop-up drain.

Package Contents

Verify that all components are present before beginning installation:

- Bathroom Faucet (Spout and two handles)
- 3/8" Water Supply Hoses (20.5 inches long)
- Pop Up Drain
- Instruction Manual (this document)
- Installation Hardware



Lifetime Limited Warranty

Passed level 10 salt spray test and 500,000+ open-close cycles

Upgraded Solid Brass



Anti
Corrosion



Scratch
Resistant



No
Fingerprints



No Peeling
Paint



No Water
Spots



Rust
Free

Image: A visual representation of the HOIGY faucet components, highlighting the solid brass construction and various features like anti-corrosion and scratch resistance.

Specifications

Feature	Specification
Brand	HOIGY
Model Name	HYBF-01-B

Color	Matte Black
Material	Brass (Faucet Body), Zinc (Handles)
Finish Type	Painted
Mounting Type	Deck Mount
Installation Type	Widespread (3-Hole)
Hole Count	3
Number of Handles	2
Spout Design	Waterfall
Spout Height	3.35 Inches
Spout Reach	4.45 Inches
Product Dimensions	5.31"D x 8.27"W x 4.13"H
Hose Length	23 Inches
Maximum Flow Rate	1.8 Gallons Per Minute
Item Weight	3.51 Pounds
Special Features	Easy to Install, Lead Free, Pop Up Drain, Quiet, Water Saving System

Installation

The HOIGY Waterfall Bathroom Sink Faucet is designed for quick and easy installation, typically within 10 minutes, without requiring specialized tools or a plumber. It is compatible with 3-hole basins ranging from 4 to 10 inches, with a sink hole diameter of 1.1-1.5 inches and a sink thickness of 0.1-1.9 inches.

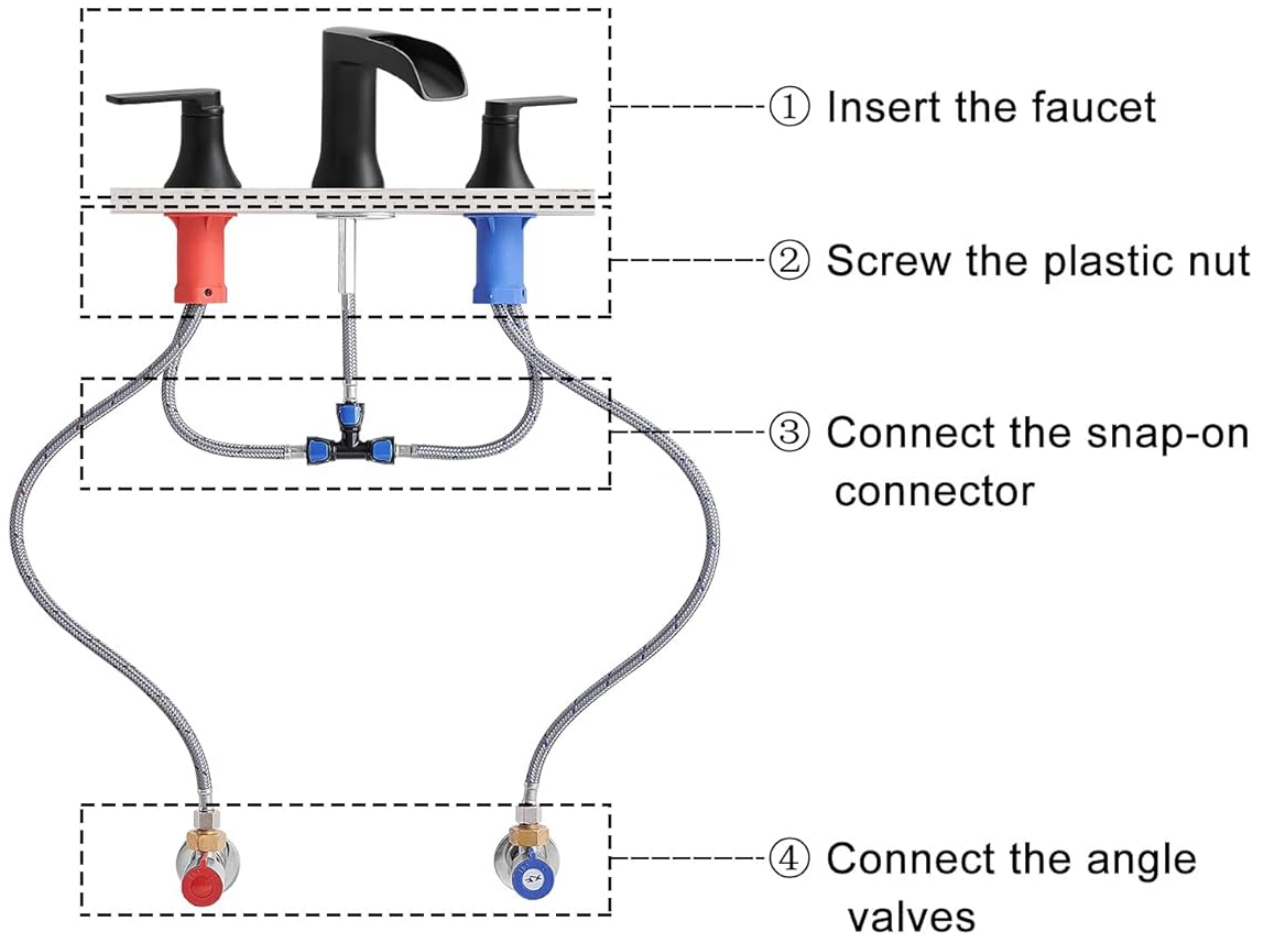
Installation Steps:

- 1. Insert the Faucet:** Place the faucet spout and handles into the designated holes on your sink or countertop.
- 2. Secure with Plastic Nut:** From underneath the sink, screw the plastic nuts onto the threaded shafts of the faucet components to secure them in place.
- 3. Connect Snap-on Connector:** Attach the water supply hoses to the faucet and then connect them to the included snap-on connector. Ensure a secure fit to prevent leaks.
- 4. Connect Angle Valves:** Connect the other ends of the water supply hoses to your hot and cold angle stop valves.

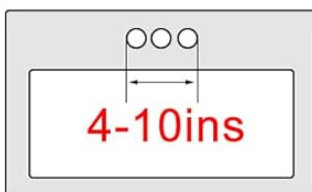
The package includes all necessary components: the faucet, 20.5-inch 3/8" water supply hoses, a pop-up drain, and installation hardware. The water hoses are pre-connected to the vanity faucet to minimize potential leakage points during installation.

4-Step Installation in 10 Mins

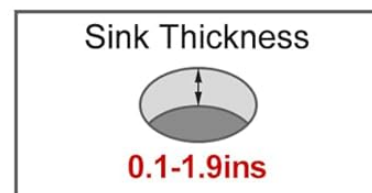
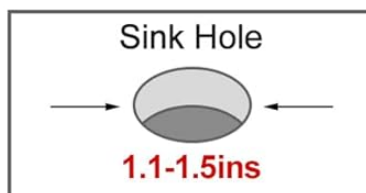
· No need experience · No need plumber · No extra tools · No extra costs



NOTE: Only fit the 3 holes sink



Three Holes ✓



Compliant with US Standards



Image: A detailed diagram illustrating the four-step installation process for the HOIGY widespread bathroom faucet, including sink hole and thickness requirements.

Pop-Up Drain Installation:

The included pop-up drain is designed for easy installation and features a press mechanism that prevents sticking and water accumulation. It is compatible with sink holes between 1.6-1.9 inches and sink thicknesses between 1.2-2.4 inches. Ensure your sink has an overflow if using the overflow-compatible drain.



Image: An illustration detailing the pop-up drain, showing its components and how it integrates with sinks, including considerations for overflow.

Operating Instructions

Your HOIGY faucet features two lever handles for independent control of hot and cold water. The left handle typically controls hot water, and the right handle controls cold water. Adjusting the handles allows you to achieve your desired water temperature and flow rate.

- **Water Flow:** Turn the handles upwards to open the water flow.
- **Temperature Control:** Rotate the left handle for hotter water and the right handle for colder water. Adjust both handles simultaneously to mix water to your preferred temperature.
- **Waterfall Spout:** The unique waterfall spout delivers a steady, laminar stream of water, enhanced by a 3-layer metal filter and built-in pressure reducing valve to prevent splashing and conserve water.



Waterfall Bathroom Faucet

2 Handles easily control water flow & temperature



Open 

Open 



Patented
Design



Conserve
Water

Image: The HOIGY faucet in operation, demonstrating the waterfall effect and the clear labeling for hot and cold water control on the two handles.

Maintenance

To ensure the longevity and appearance of your HOIGY faucet, follow these simple maintenance guidelines:

- **Cleaning:** Clean the faucet regularly with a soft cloth and mild soap. Avoid abrasive cleaners, harsh chemicals, or scouring pads, as these can damage the matte black finish. The upgraded surface material resists fingerprints and water spots, making cleaning easier.

- **Filter Maintenance:** Periodically check the 3-layer metal filter in the spout for any debris or mineral buildup. If necessary, gently remove and clean the filter to maintain optimal water flow.
- **Leak Prevention:** Regularly inspect connections for any signs of leaks. The faucet's design, including the high-sealing ceramic valve core and nylon braided supply hoses with snap-on connectors, is engineered for leak-free performance.

Silent Waterfall without Splashing

Exclusive 3 layer metal filter & pressure reducer
to have steady laminar stream



Waterfall



Silent



Laminar
Stream



Image: A close-up view of the HOIGY faucet's waterfall spout, highlighting the integrated metal filter designed to ensure a silent, splash-free, and laminar water stream.

Troubleshooting

If you encounter any issues with your HOIGY faucet, refer to the following common problems and solutions:

Problem	Possible Cause	Solution
Water Leakage	Loose connections, damaged O-rings, ceramic valve issue.	Check all connections, especially the snap-on connector and angle valve connections. Ensure they are tightened correctly. The faucet features a high-sealing ceramic valve core and durable nylon braided hoses designed to prevent leaks. If leaks persist, contact customer service.
Low Water Flow	Clogged filter, low water pressure, kinked supply hose.	Inspect the 3-layer metal filter in the spout for debris and clean if necessary. Check your household water pressure. Ensure supply hoses are not kinked.
Handles Stiff or Difficult to Turn	Mineral buildup, internal component issue.	Clean around the base of the handles. If the issue persists, contact customer service.
Pop-Up Drain Not Functioning	Debris, improper installation.	Clear any debris from the drain mechanism. Re-check installation to ensure proper alignment.



No Leaks & More Safety

Eliminates any potential water leakage, giving you more assured



Why Does Ours Not Leak?



① **Snap-on Connector**
Easily lock water and leakage-free



② **Fitted Water Hoses**
No need to screw by yourself



③ **Ceramic Valve**
Excellent sealing

Image: An infographic detailing the leak-prevention technologies used in the HOIGY faucet, including the snap-on connector, pre-fitted water hoses, and the ceramic valve.

Warranty and Support

HOIGY provides a **Lifetime Limited Warranty** for this Waterfall Bathroom Sink Faucet, Model HYBF-01-B. This warranty covers defects in material and manufacturing under normal use and service. Additionally, a 30-day return policy is offered.

For warranty claims, technical assistance, or any other inquiries, please contact HOIGY customer service. Our team is available 24/7 online to provide support.

Contact Information: Refer to your purchase documentation or the HOIGY official website for the most current customer service contact details.