

[Manuals.plus](#) /

› [BougeRV](#) /

› BougeRV Solar Panel Crab Mounting Kit User Manual

BougeRV Solar Panel Crab Mounting Kit

BougeRV Solar Panel Crab Mounting Kit User Manual

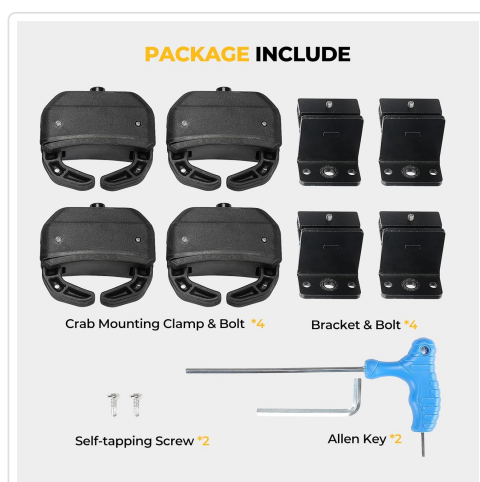
Model: Solar Panel Crab Mounting Kit

1. INTRODUCTION

The BougeRV Solar Panel Crab Mounting Kit provides an effortless and secure solution for attaching solar panels to your vehicle's roof rack cross bars. Designed for versatility and ease of use, this kit allows you to integrate solar power into your mobile setup without the need for drilling, making it ideal for off-grid solar systems in various vehicles.

This mounting kit is engineered for durability and stability, ensuring your solar panel remains securely in place even during travel. It is compatible with a range of crossbar types and supports solar panels from 100 to 200 watts.

2. PACKAGE CONTENTS



The package includes all necessary components for installation:

- 4 x Crab Mounting Clamp & Bolt
- 4 x Bracket & Bolt
- 2 x Self-tapping Screw
- 2 x Allen Key

Image description: A clear layout of all components included in the BougeRV Solar Panel Crab Mounting Kit, showing the crab-shaped clamps, L-shaped brackets, screws, and hex keys.

3. COMPATIBILITY AND PRE-INSTALLATION CHECK

Before installation, ensure your vehicle's cross bars and solar panel meet the compatibility requirements:

- **Cross Bar Types:** Fits most aero, oval, and square bars. **Does not fit rounded cross bars.**
- **Solar Panel Wattage:** Designed for 100 to 200 Watt solar panels.
- **Dimension Limit:** The distance between the two brackets after installation must not exceed the clampable range of your cross bars. Refer to the diagram below for visual guidance.

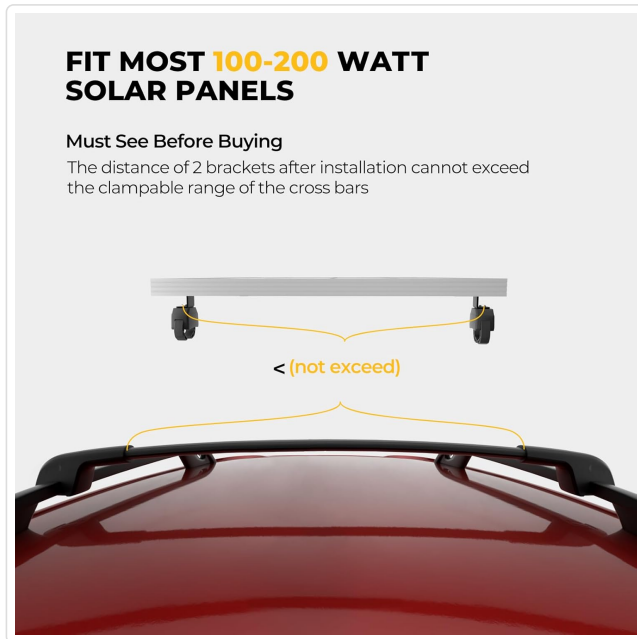


Image description: A diagram illustrating the maximum allowable distance between the mounting points on the solar panel relative to the width of the vehicle's crossbars, ensuring proper fitment.



Image description: Detailed illustrations of compatible crossbar shapes and their respective dimensions, including rectangular, aero, and square tubes, along with the crab-shape mounting support.

4. SETUP AND INSTALLATION

The BougeRV Solar Panel Crab Mounting Kit is designed for quick and easy installation without drilling into your vehicle's roof. Follow these steps for a secure setup:

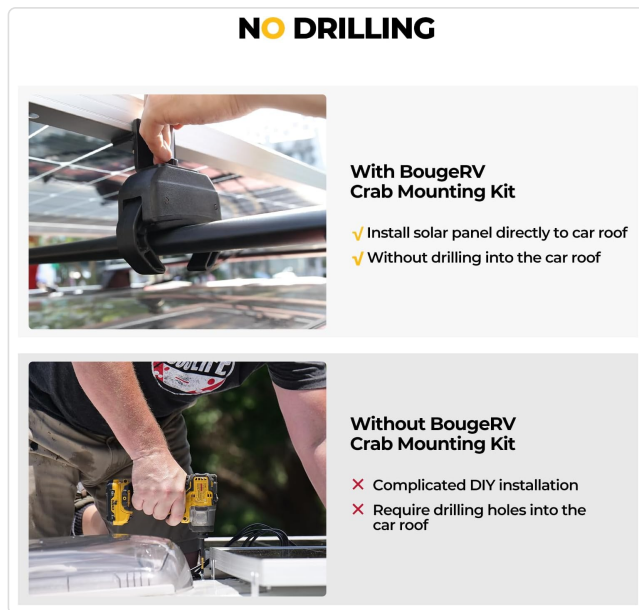


Image description: A visual comparison highlighting the key advantage of the BougeRV kit: it allows direct solar panel installation on car roofs without drilling, contrasting with methods that require drilling holes.

Installation Steps (Approx. 5 Minutes)

1. **Install The Four Brackets:** Attach the L-shaped brackets to the solar panel frame. If your solar panel does not have pre-mounted holes, use the provided self-tapping screws and tools to drill them.



Image description: Close-up of a hand installing one of the four L-shaped brackets onto the solar panel frame.

2. **Install The Crab Mounting Hardware:** Secure the crab-shaped mounting clamps to the brackets. These clamps are designed to grip the roof rack tightly.



Image description: Close-up of a hand tightening the crab mounting clamp onto the bracket using an Allen key.

3. **Install The Four Bases:** Position the solar panel assembly onto your vehicle's cross bars. Tighten the crab clamps

around the cross bars to secure the panel. The rubber pads within the clamps protect your roof rack surfaces.



Image description: Close-up of a hand securing the solar panel to the vehicle's cross bar by tightening the crab clamp.

Video Guide:

Your browser does not support the video tag.

Video description: An official BougeRV video demonstrating the easy installation and removal process of the solar panel on car cross bars using the Crab Mounting Kit. This video highlights the no-drilling feature and the secure attachment mechanism.

5. USAGE GUIDELINES AND VERSATILITY

The BougeRV Solar Panel Crab Mounting Kit offers flexible usage for various applications:

- **Vehicle Compatibility:** Easily attach solar panels to vans, pickup trucks, SUVs, and RVs with compatible cross bars.
- **Powering Devices:** Utilize the mounted solar panel to power devices such as car fridges, solar generators, and batteries for off-grid needs.
- **Temporary & Permanent Setups:** The "Easy On Easy Off" design allows for both permanent installations and temporary setups. You can quickly loosen the clamps to remove the panel for transporting other gear or for car washes. The kit can also be de-installed and reused on different vehicles.
- **Ground Setups:** Adaptable for ground setups using Unistrut or pipe-based solutions, providing flexible base clamping options.

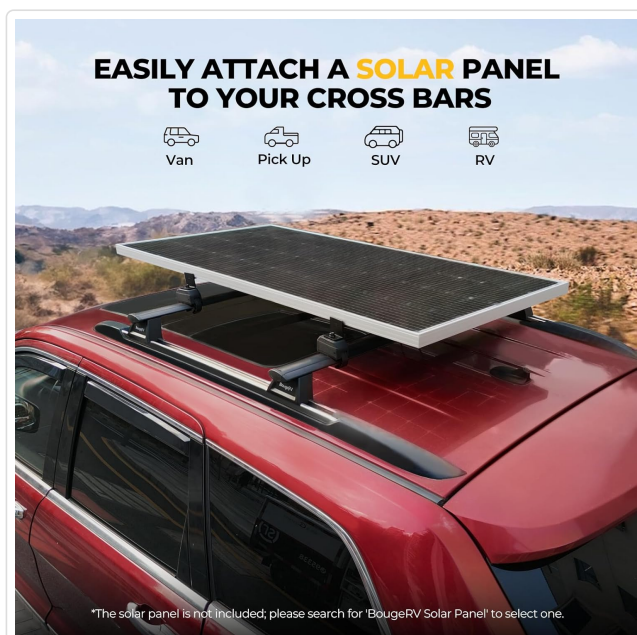


Image description: A visual representation of a solar panel mounted on a vehicle's cross bars, with icons indicating its suitability for vans, pickup trucks, SUVs, and RVs.



Image description: The primary product image displaying the BougeRV Solar Panel Crab Mounting Kit, with the mounting hardware and a solar panel securely attached to a vehicle's roof rack.

6. MAINTENANCE AND DURABILITY

The BougeRV Solar Panel Crab Mounting Kit is built with high-quality materials for long-lasting performance and minimal maintenance.

- **Material:** Made of high-quality steel, providing superior strength compared to lighter aluminum alternatives.
- **Protective Features:** Features integrated rubber pads to protect contact surfaces of your roof rack and enhance grip, reducing vibration and movement.
- **Weather Resistance:** Designed to withstand various weather conditions, including snow and rain, with powder-coated finish for corrosion resistance.
- **Vibration Tested:** Rigorously tested for stability, enduring 240 vibrations per minute for 16 hours without rattles or movement, ensuring secure attachment during driving.

Recommended Maintenance: Periodically inspect all clamps and bolts to ensure they remain tight and secure. Check the rubber pads for any signs of wear or damage and replace if necessary to maintain optimal grip and protection.

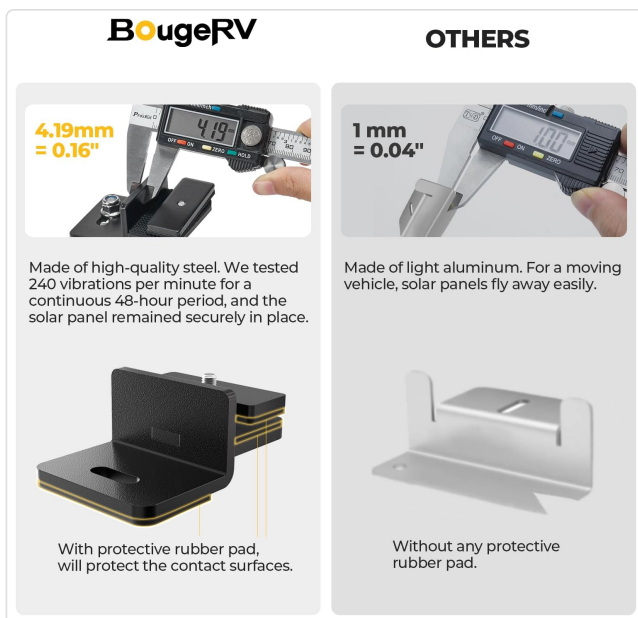


Image description: A side-by-side comparison highlighting the robust construction of BougeRV brackets made from high-quality steel with protective rubber pads, contrasted with lighter, less durable alternatives.



Image description: A visual demonstration of the mounting kit's ability to withstand various weather conditions, showing a vehicle with a mounted solar panel in both snowy and rainy environments.

7. TROUBLESHOOTING

If you encounter any issues during installation or use, refer to the following common troubleshooting tips:

- **Panel Does Not Fit:**
 - Ensure your solar panel is within the 100-200 Watt range.
 - Verify that the distance between the two brackets on your solar panel does not exceed the clampable range of your cross bars. Refer to Section 3: Compatibility and Pre-Installation Check.
- **Clamps Do Not Fit Cross Bars:**
 - Confirm your cross bars are not rounded. The kit is designed for aero, oval, and square cross bars only.
 - Check the dimensions of your cross bars against the compatibility specifications in Section 3.

- **Panel Feels Loose or Rattles:**

- Ensure all bolts and clamps are tightened securely using the provided Allen keys.
- Verify that the rubber pads are correctly positioned within the clamps to maximize grip and minimize movement.
- Re-check the installation steps to ensure all components are assembled correctly.

- **Difficulty with Self-Tapping Screws:**

- Ensure you are using appropriate tools if pre-drilled holes are not present on your solar panel frame.

For persistent issues or further assistance, please contact BougeRV customer support.

8. SPECIFICATIONS

Feature	Detail
Product Name	BougeRV Solar Panel Crab Mounting Kit
Model Number	Solar Panel Crab Mounting Kit
Mounting Type	Roof Rack Mount (Crab Clamp Style)
Compatible Solar Panel Wattage	100 to 200 Watts
Material	High-quality Steel (brackets), Rubber (pads)
Finish	Powder Coated (Black)
Item Weight	4.51 pounds (approx. 2.05 kg)
Product Dimensions (L x W x H)	3.94 x 3.94 x 3.94 inches (approx. 10 x 10 x 10 cm)
Installation Method	No-drilling, clamp-on
First Available Date	June 2, 2023

9. WARRANTY AND SUPPORT

BougeRV provides comprehensive support for its products:

- **Technical Support:** Enjoy no-hassle 1-year technical support for your BougeRV Solar Panel Crab Mounting Kit.
- **Contact:** If you have any questions or encounter problems during the use process, please reach out to BougeRV customer support for assistance.

BougeRV is committed to ensuring uninterrupted electricity during your camping or road adventures with reliable solar product solutions.