

BSZHI DE-K07-B

BSZHI Mini Transparent Wireless Bluetooth Speaker User Manual

Model: DE-K07-B

INTRODUCTION

Thank you for purchasing the BSZHI Mini Transparent Wireless Bluetooth Speaker. This manual provides essential information for the safe and efficient operation of your device. Please read it thoroughly before use and retain it for future reference.

IMPORTANT SAFETY INFORMATION

- Do not expose the speaker to extreme temperatures or direct sunlight for extended periods.
- Avoid dropping or subjecting the speaker to strong impacts.
- Do not disassemble, repair, or modify the device yourself. Refer all servicing to qualified personnel.
- Keep the speaker away from water and liquids. While the product is indicated as "waterproof" in specifications, it is generally advised to avoid submersion or heavy splashing to ensure longevity.
- Use only the provided USB cable for charging.
- Keep out of reach of children.

PACKAGE CONTENTS

Please check the package for the following items:

- 1 x BSZHI K07 Bluetooth Speaker
- 1 x USB Charging Cable
- 1 x User Manual

PRODUCT OVERVIEW

The BSZHI Mini Transparent Wireless Bluetooth Speaker features a unique transparent design, integrated LED lights, and powerful audio capabilities.



Figure 1: Compact design of the BSZHI Mini Transparent Wireless Bluetooth Speaker.

Special transparent shell design Cool and technological



TRANSPARENT MECHA BLUETOOTH SPEAKER

Figure 2: Internal structure and transparent shell design.





Figure 3: Detailed view of the speaker's front panel and internal components.

Controls and Indicators:

- **Power Button:** Turns the speaker on/off.
- **"M" Button:** Mode button, used to cycle through LED lighting modes.

- **Charging Port:** USB port for charging the speaker.
- **LED Indicators:** Display charging status, Bluetooth connection, and lighting effects.

SETUP

Charging the Speaker:

1. Connect the small end of the provided USB charging cable to the charging port on the speaker.
2. Connect the larger end of the USB cable to a USB power adapter (not included) or a computer's USB port.
3. The LED indicator will show the charging status. Once fully charged, the indicator may change color or turn off.
4. A full charge provides approximately 4 hours of playback time.



Figure 4: Battery capacity and estimated playback time.

OPERATING INSTRUCTIONS

Power On/Off:

- Press and hold the Power button to turn the speaker ON or OFF.

Bluetooth Pairing:

1. Turn on the speaker. It will automatically enter Bluetooth pairing mode, indicated by a flashing LED light.
2. Enable Bluetooth on your device (smartphone, tablet, computer).
3. Search for "K07" or "BSZHI Speaker" in the list of available Bluetooth devices.
4. Select "K07" to connect. Once connected, the LED indicator will stop flashing and remain solid.
5. You can now play audio through the speaker.



Figure 5: Bluetooth 5.0 connectivity for stable audio streaming.

True Wireless Stereo (TWS) Function:

The TWS function allows you to pair two K07 speakers together for a true stereo sound experience.

1. Ensure both K07 speakers are turned on and not connected to any other Bluetooth device.
2. On one of the speakers (this will be the primary speaker), double-press the Power button (or a dedicated TWS button if available, refer to specific product markings). The speakers will attempt to pair with each other.
3. Once successfully paired, you will hear an audible confirmation. The LED indicators on both speakers will synchronize.
4. Now, connect your device to the primary speaker via Bluetooth as described in the "Bluetooth Pairing" section. Both speakers will play audio in stereo.



Figure 6: TWS pairing for enhanced stereo sound.

LED Lighting Modes:

The speaker features colorful LED lights that can dance to the music.

- Press the "M" button to cycle through the available lighting modes.
- There are three distinct lighting modes to choose from.

Multiple lighting modes

The lights change with the music

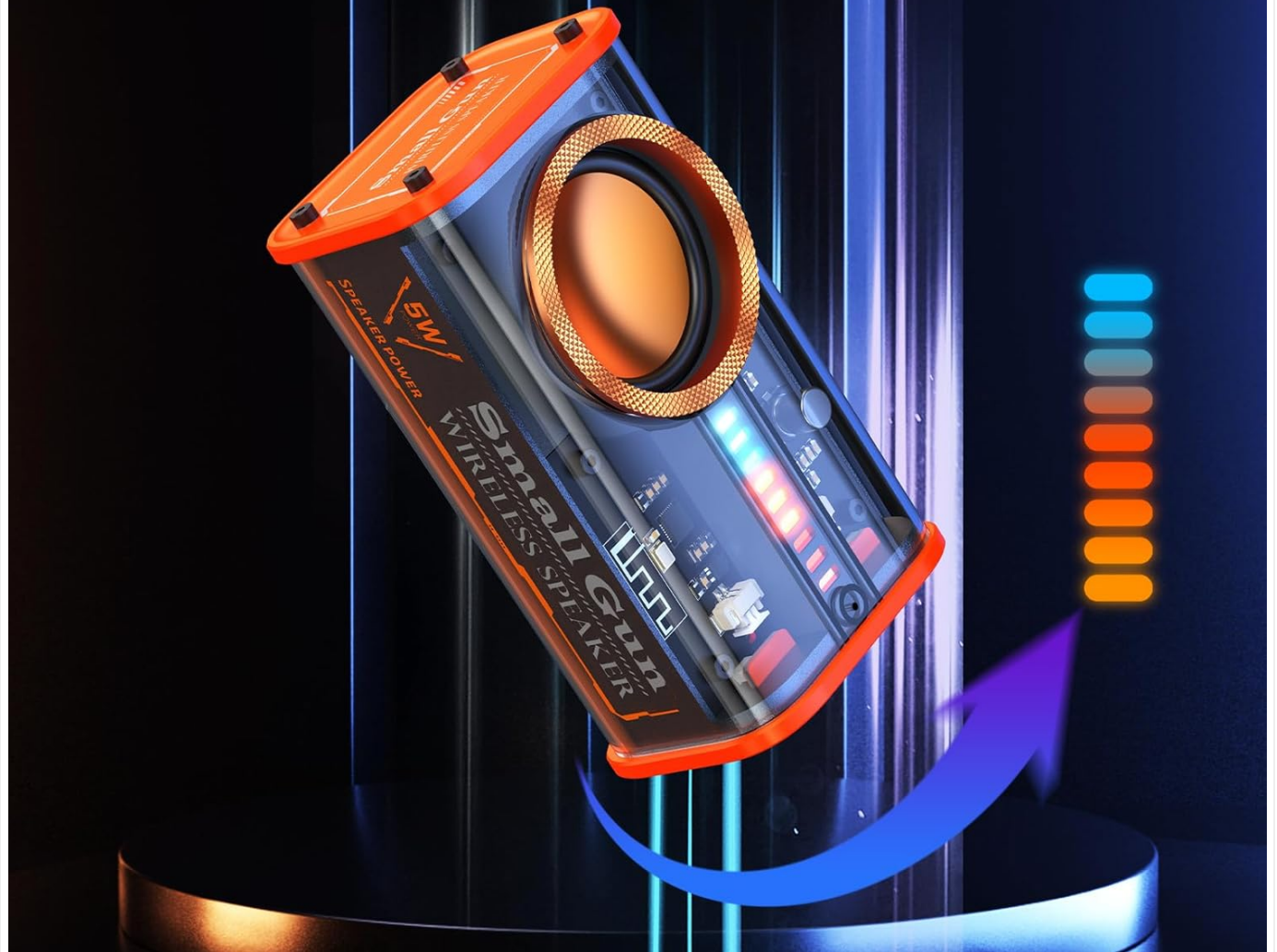


Figure 7: Multiple LED lighting modes.

USB Music Playback:

The speaker supports music playback directly from a USB flash drive.

1. Insert a USB flash drive containing audio files into the USB port on the speaker.
2. The speaker should automatically detect the USB drive and begin playing music.
3. Use the speaker's controls (if available) or your connected device to manage playback.

MAINTENANCE AND CARE

- Clean the speaker with a soft, dry cloth. Do not use abrasive cleaners or solvents.
- Store the speaker in a cool, dry place when not in use.
- Avoid exposing the speaker to extreme temperatures or humidity.
- Charge the battery regularly, even if the speaker is not used for extended periods, to maintain battery health.

TROUBLESHOOTING

Problem	Possible Cause	Solution
Speaker does not turn on.	Battery is depleted.	Charge the speaker using the provided USB cable.
Cannot pair with Bluetooth device.	Speaker is not in pairing mode or too far from device.	Ensure speaker is on and LED is flashing. Move speaker closer to device. Turn Bluetooth off/on on your device.
No sound.	Volume is too low or device is not connected.	Increase volume on both speaker and connected device. Ensure Bluetooth connection is established.
TWS pairing fails.	Speakers are already connected to another device or too far apart.	Ensure both speakers are disconnected from other devices. Place them close to each other during TWS pairing.

SPECIFICATIONS

Feature	Detail
Model Number	DE-K07-B
Bluetooth Version	5.0
Wireless Range	Up to 100 feet (approx. 30 meters)
Output Power	5 Watts
Battery Capacity	600 mAh Lithium-ion
Playback Time	Approx. 4 hours (varies with volume)
Input Voltage	DC 5V
Dimensions (L x W x H)	9.6 x 4.05 x 5.45 cm (3.78 x 1.59 x 2.15 inches)
Weight	180 Grams (0.4 lbs)
Special Features	LED Light, USB Port, Portable, TWS Function
Waterproof	Yes (Note: Refer to safety guidelines for usage)

WARRANTY AND SUPPORT

For warranty information or technical support, please refer to the contact details provided on the product packaging or the official BSZHI website. If you encounter any issues, please contact our customer service team for assistance.
Note: The manufacturer, ZAKJ, is committed to providing quality products.



