

Manuals+

[Q & A](#) | [Deep Search](#) | [Upload](#)

manuals.plus /

› [COSLUS](#) /

› [COSLUS Cordless Nail Drill Electric File User Manual](#)

COSLUS C20(BK-A08)

COSLUS Cordless Nail Drill Electric File

Model: C20(BK-A08)

Brand: COSLUS

1. INTRODUCTION

Thank you for choosing the COSLUS Cordless Nail Drill Electric File. This professional-grade tool is designed for efficient and precise manicure and pedicure tasks, including shaping, buffing, and removing various nail enhancements. Its cordless, lightweight design ensures comfort and portability. Please read this manual thoroughly before first use to ensure safe and optimal performance.

2. SAFETY INFORMATION

To prevent injury or damage, always observe the following safety precautions:

- Keep the device away from water or other liquids.
- Do not disassemble or attempt to repair the device yourself. Contact customer support for assistance.
- Ensure the correct bit is securely inserted before operation.
- Avoid applying excessive pressure, which can cause the device to stop or damage the nail.
- Keep out of reach of children.
- Use only the provided accessories and bits.
- If the device becomes clogged, it will automatically turn off after 20 seconds. Clear the obstruction before resuming use.
- Avoid spilling acetone on the device, especially near the buttons, as it can damage the plastic.

3. PACKAGE CONTENTS

Verify that all items are present in your package:

- 1 x COSLUS Cordless Nail Drill Electric File
- 6 x Professional Grinder Bits (Metal Bit Set)
- 31 x Sanding Bands
- 1 x USB-C Charging Cable (Adapter not included)



Image: The COSLUS Cordless Nail Drill Electric File, showing the main unit, various metal bits, and a large quantity of sanding bands.

4. PRODUCT OVERVIEW

The COSLUS Cordless Nail Drill features a sleek, pen-shaped design for comfortable handling. Key components and controls are detailed below:

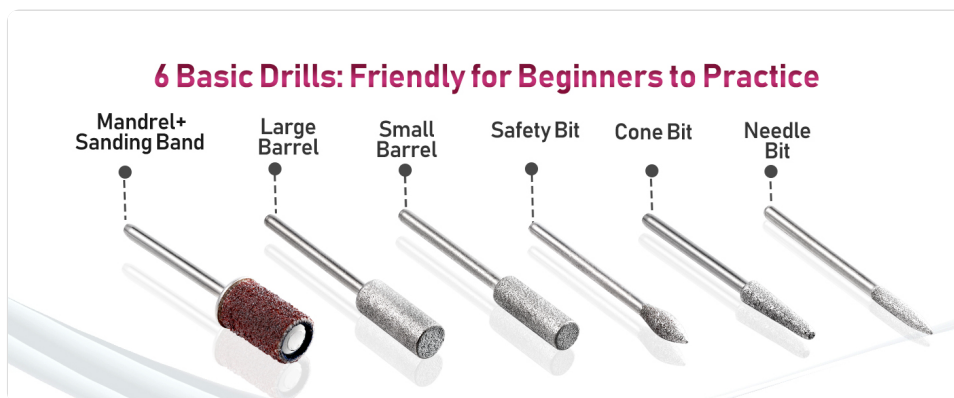


Image: A diagram illustrating the power button, acceleration button, deceleration button, and direction switch on the nail drill.

- **Power Button:** Long press to turn the device on or off.
- **Acceleration Button (+):** Short press to increase speed (3 gear safe acceleration).
- **Deceleration Button (-):** Short press to decrease speed (3 gear safe deceleration).
- **Direction Switch:** Double click to switch rotation direction (Forward/Reverse).
- **Pause Button:** One click to pause operation.
- **Indicator Lights:** Display battery level and speed settings.

Grinding Head Configurations:

The kit includes 6 basic drill bits suitable for various nail care needs:



Image: Close-up view of the six different grinding bits included with the nail drill, along with sanding bands.

- **Conical Bit:** Used for polishing nail sidewalls and cuticles.
- **Safety Bit:** Used to remove bulge parts on the nail surface and nail polish.
- **Needle Bit:** For nail carving and corner filing.
- **Small Barrel:** Buffs nail surface and removes nail polish & acrylic nails.
- **Large Barrel:** Buffs nail surface and removes nail polish & acrylic nails.
- **Mandrel + Sanding Band:** For general filing and shaping.

5. SETUP

Charging the Device:

The COSLUS Nail Drill features a fast-charging battery that provides up to 6 hours of use on a single charge. It can be fully charged in approximately 1 hour.

- Connect the provided USB-C charging cable to the charging port on the nail drill.
- Connect the other end of the USB-C cable to any 5V adapter (not included).
- The indicator lights will show charging status.
- The device can be used while charging.

Can be Used Cordless or While Charging



Image: The COSLUS Nail Drill connected to a USB-C charging cable, demonstrating its charging capability.

Inserting Drill Bits:

Proper insertion of the drill bit is crucial for safe and effective operation.

1. Ensure the device is turned off before inserting or removing bits.
2. Gently pull out any existing drill bit.
3. Insert the desired drill bit firmly into the chuck until it clicks into place. Ensure there is a small gap (distance) between the bit and the drill body for correct installation.
4. Do not force the bit. If it does not insert easily, check for obstructions.

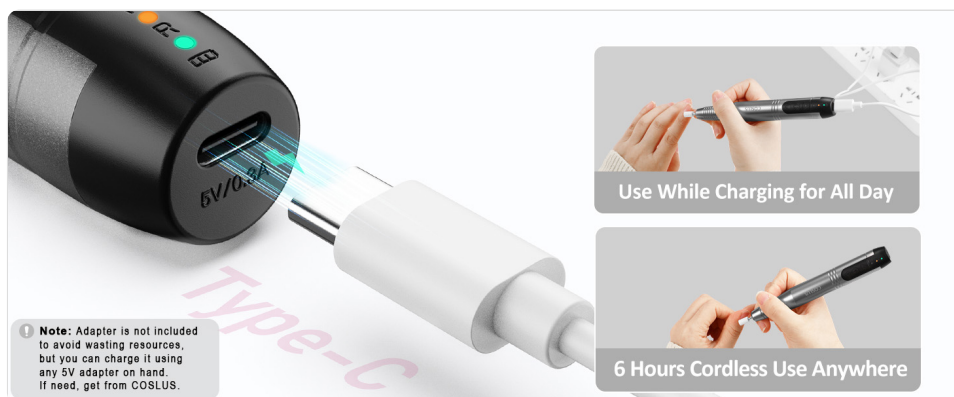


Image: A four-panel illustration showing the correct and incorrect methods for inserting a drill bit into the nail drill.

6. OPERATING INSTRUCTIONS

Basic Operation:

1. **Power On/Off:** Long press the power button to turn the device on or off.
2. **Adjusting Speed:** Use the '+' button to increase speed and the '-' button to decrease speed. The device offers 3 gear safe acceleration/deceleration.

3. **Changing Direction:** Double click the direction switch button to toggle between forward (FWD) and reverse (REV) rotation.
4. **Pausing Operation:** Click the pause button once to temporarily stop the drill. Click again to resume.



Image: An illustration of the COSLUS Nail Drill's internal motor and the arrows indicating forward (FWD) and reverse (REV) rotation capabilities.

Application Tips:

- Start with a low speed setting, especially if you are a beginner.
- Apply light, consistent pressure. Avoid pressing too hard, which can cause the drill to slow down or stop.
- Move the drill bit smoothly across the nail surface.
- Use appropriate bits for specific tasks (e.g., conical bit for cuticles, barrel bits for surface work).



Image: A collage showing different nail and skin conditions (acrylic/gel nail, dip powder nail, callus, thick nail, dead skin, cuticle) that the nail drill can address.

Official Product Video:

Your browser does not support the video tag.

Video: An official product video from COSLUS demonstrating the features and use of the Cordless Nail Drill. This video highlights the drill's portability and ease of use for various nail care tasks.

7. MAINTENANCE

Cleaning:

- Always turn off and unplug the device before cleaning.
- Wipe the main unit with a soft, dry cloth. Do not use harsh chemicals or abrasive cleaners.
- Clean drill bits after each use. You can use a small brush or an ultrasonic cleaner for thorough cleaning.
- Ensure bits are completely dry before storing.

Storage:

- Store the nail drill and its accessories in a cool, dry place, away from direct sunlight and moisture.
- Keep all components in their original packaging or a protective case to prevent damage.
- Ensure the device is fully charged before long-term storage to maintain battery health.

Various Grinding Head Configurations

6 Basic Drills for Beginners

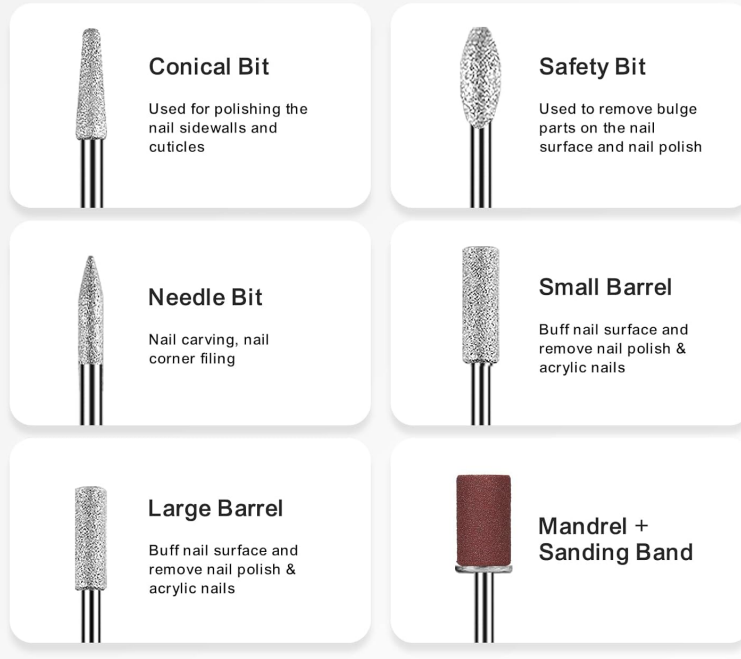


Image: The COSLUS Nail Drill and its bit case neatly stored in a drawer, demonstrating its compact size and ease of storage.

8. TROUBLESHOOTING

Problem	Possible Cause	Solution
Device does not turn on.	Low battery; Device not charged; Power button not pressed long enough.	Charge the device fully. Long press the power button for 2-3 seconds.
Drill bit stops or slows down during use.	Excessive pressure applied; Bit clogged with debris; Low battery.	Reduce pressure. Clean the drill bit. Recharge the device.
Device heats up excessively.	Prolonged continuous use; Blocked ventilation.	Allow the device to cool down. Ensure ventilation ports are clear. The device is designed for low heat operation due to its aluminum case and upgraded motor.
Bit is difficult to insert or remove.	Incorrect alignment; Debris in chuck.	Ensure proper alignment. Clean the chuck area. Do not force the bit.

9. SPECIFICATIONS

- **Model Name:** BK-A08
- **Item Model Number:** C20(BK-A08)
- **Brand:** COSLUS
- **Power Source:** Battery Powered
- **Battery:** 1 Lithium Ion battery required (included)
- **Battery Life:** Up to 6 hours (after 1 hour charge)

- **Material:** Metal
- **Item Weight:** 90.72 Grams (approx. 0.2 lbs)
- **Product Dimensions:** 5.9 x 1.02 x 0.82 inches
- **Manufacturer:** COSLUS
- **Country of Origin:** China

10. WARRANTY AND SUPPORT

COSLUS is committed to providing high-quality products. For any issues or inquiries, please refer to the following:

- **User Manual (PDF):** [Download User Manual](#)
- **User Guide (PDF):** [Download User Guide](#)
- **Manufacturer Contact:** Please contact COSLUS customer service through the retailer's platform or the official COSLUS website for warranty claims or technical support.
- **Note on Adapter:** An adapter is not included to avoid wasting resources. You can charge it using any 5V adapter on hand. If needed, you may obtain one from COSLUS.