

Milerong X25-2 Channeel

Milerong X25 Dual Dash Cam User Manual

Model: X25-2 Channeel

INTRODUCTION

The Milerong X25 Dual Dash Cam is designed to provide comprehensive video recording for your vehicle, capturing both the road ahead and the interior cabin. Equipped with 1080P resolution for both cameras, infrared night vision, G-sensor, and loop recording, it offers reliable surveillance and evidence in various driving conditions. This manual provides detailed instructions for installation, operation, and maintenance of your dash cam.



Image: Milerong X25 Dual Dash Cam, showing the main unit, interior camera, and included 64GB SD card.

What's in the Box

Please verify that all items listed below are included in your package:

- X25 1080P Dashcam (Front and Inside)
- 64GB Memory Card
- Dashcam Charger with USB interface
- Dual Dash Cam USB Cable (for playback videos)
- Car Dash Cam User Manual
- Car Dash Cam Installation Tools (Wire Trim Tool, Needle for Resetting)
- Suction Cup Mount
- Memory Card Reader
- Cleaning Cloth

Package Include



Image: Visual representation of all items included in the Milerong X25 Dash Cam package.

Dual 1080P Dash Cam Front and Inside

Front and Inside Camera: FHD 1920P*1080P@30fps

IMPORTANT: NO Wireless / APP / WIFI / GPS / Bluetooth.



Image: Dimensions of the Milerong X25 Dash Cam and an overview of its main features.

SETUP AND INSTALLATION

Follow these steps for proper installation of your Milerong X25 Dual Dash Cam:

1. **Prepare the Windscreen:** Clean the area on your front windscreen where you intend to mount the dash cam. Ensure it is free of dust and grease for optimal suction.
2. **Attach Suction Cup Mount:** Remove the protective film from the suction cup mount. Press the suction cup firmly against the cleaned windscreen. Clockwise rotate the button of the suction cup until the 'LOCK' icon is vertical and you hear a ticking sound, indicating a secure fit.
3. **Insert Memory Card:** Insert the provided 64GB Micro SD card into the dash cam's memory card slot. Ensure it clicks into place. For first-time use, it is recommended to format the card within the dash cam's settings.
4. **Connect Power:** Connect the dash cam to your car's cigarette lighter port using the original car charger. The dash cam will automatically turn on and begin recording when your car's ignition is turned on.
5. **Adjust Camera Angle:** The dash cam features an adjustable built-in interior lens that can be adjusted up and down by 45 degrees. Adjust both the front and interior camera angles to ensure optimal coverage.



Image: Step-by-step guide for easy installation of the dash cam.

Powerful & Adjustable Dual Dash Cam

Adjustable Inside Camera

Adjustable built-in lens, adjustable up and down by 45°

Stable Suction Cup

30° suction cup shaft, which can rotate freely and flexibly adjust the recording direction.

Porous Modeling

The empty shape is good for heat dissipation and adapts to extreme weather

Support 64GB Memory Max

The 64GB Class10 SD Card is include the package.



Image: Features highlighting the adjustable interior camera and stable suction cup mount.

Easy Card Insertion and Removal

Poke the "Re" hole to solve the problems such as jamming or dying and not working.

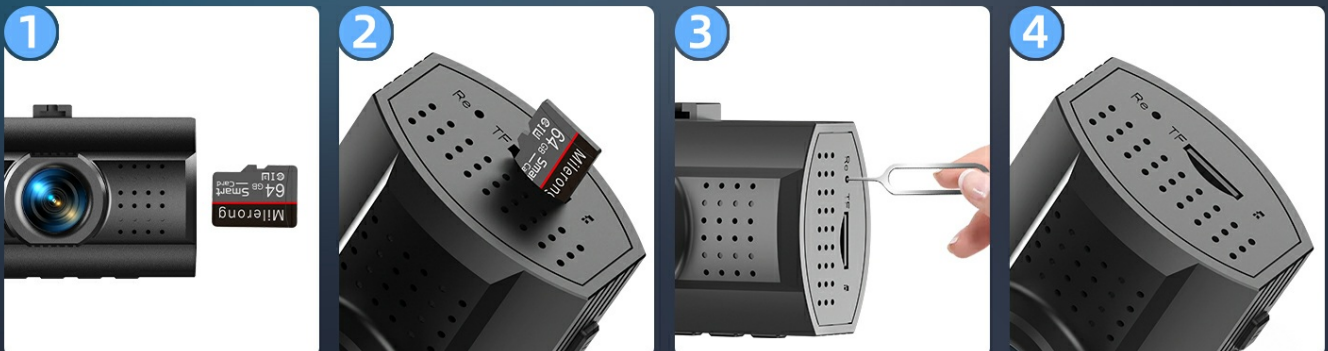


Image: Instructions for easy insertion and removal of the memory card.

OPERATING INSTRUCTIONS

Familiarize yourself with the various functions and settings of your dash cam:

Basic Operation

- **Power On/Off:** The dash cam powers on and off automatically with your vehicle's ignition when connected to the cigarette lighter.
- **Recording:** Recording starts automatically upon power-on. A red indicator light typically signifies active recording.
- **Accessing Settings:** If the dash cam is recording, press the "OK" button to pause recording first. Then, press the "M" button to enter the menu for settings. All buttons will not work if recording is not paused.

Key Features

- **Dual 1080P Recording:** The front camera captures a 170° wide-angle view, and the interior cabin camera captures a 140° view, both at 1920x1080P 30fps. This provides comprehensive coverage of the road and vehicle interior.



Image: The dash cam display showing simultaneous front and interior views.

2 Channel Displaying Dash Cam

Front and inside dash camera record videos and display synchronously on the 2 - inch IPS screen, giving you round protection.

170° dash cam front and 140° Cabin camera without blind spot captures all around details, provide you a safer daily driving environment.

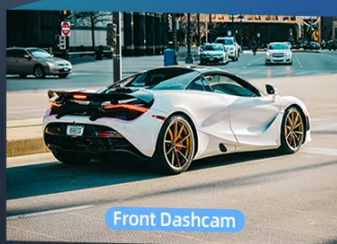
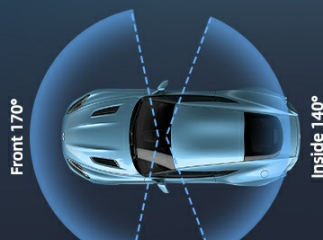


Image: Visual representation of the wide-angle coverage for both front and interior cameras.

- **Super Infrared Night Vision & WDR:** Equipped with F1.8 large aperture, 4 IR lights, and WDR technology, the dash cam ensures clear recording day and night, even in complete darkness. To turn on/off the Night Vision function, find "Shooting Sound" in the settings. "ON" will display a gray view, "OFF" will display normal color.

Super Night Vision

Large aperture F2.0 and WDR, able to balance the bright and the dark area at night better

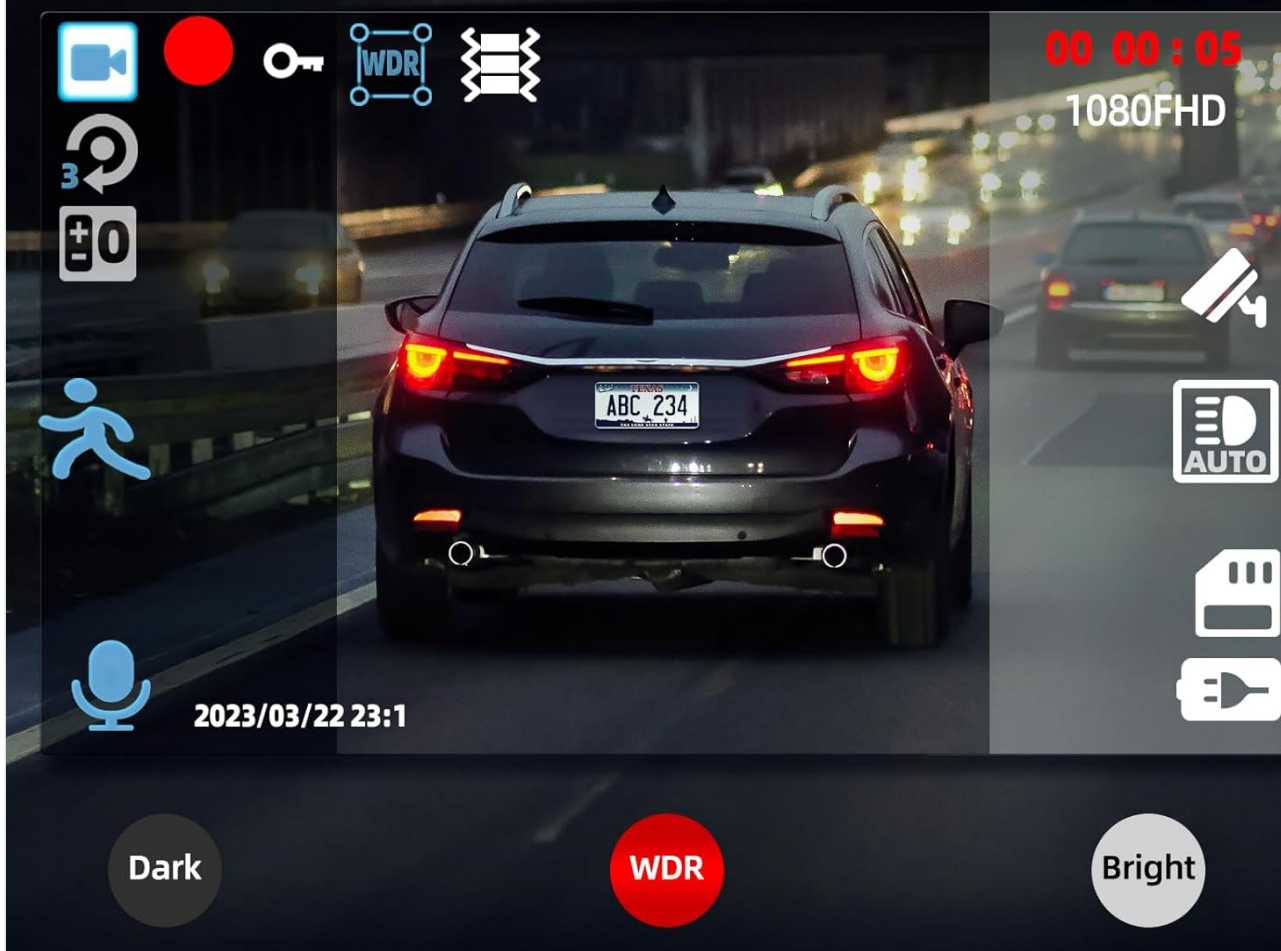


Image: Demonstration of Super Night Vision and WDR technology for clear recording in low light.



Image: The dash cam's auto IR light function for enhanced night vision inside the cabin.

Dashcam Front and Inside with WDR Technology

With enhanced WDR technology, the dash camera for cars automatically balances low and bright light, ensuring maximize the true colors of objects in backlight or low-light situations, providing artistically clear video.



WDR



Auto Balance



Capture Details

During the day



WDR OFF



WDR ON

Night Time



WDR OFF



WDR ON

Image: How WDR technology enhances video clarity in both bright and low-light conditions.

- **G-Sensor & Loop Recording:** The built-in G-sensor automatically locks video footage upon detecting sudden shocks or collisions, preventing it from being overwritten. Loop recording continuously records in 1, 2, or 3-minute segments, overwriting the oldest unlocked files when the memory card is full. Locked videos are protected.



G-Sensor

When the car detects the impact or collision, the camera will automatically lock the current video and prevent it from being covered.



Parking Monitor

Dash cam front and inside, 24-hour parking monitor, 24/7 protection, 24 hours recording (hardwire kit required).



Loop Recording

loop recording overwrite the oldest files automatically (locked files will not be overwritten)



Image: Visual explanation of G-Sensor, Parking Monitor, and Loop Recording features.

G-Sensor Car Cash Camera

The uber driver camera will auto starts to record and lock those important events when detecting impact or motion from being overwritten.

NOTE: Adjust G-sensor to a "low"



Image: How the G-Sensor protects critical video footage during impacts.

Dashcams for Cars Front and Inside Comes 64GB Card

Every 1/3/5 min loop recording as clips, the oldest videos will be overwritten when the Memory Card is full.

Support Max 64GB micro Memory Card.

Emergency locks videos won't overwritten. Never miss an important moment.

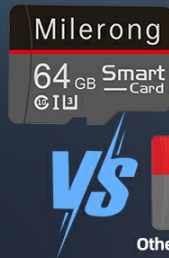
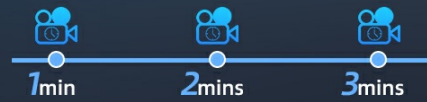


Image: Explanation of loop recording and the benefit of the included 64GB memory card.

- **24 Hours Parking Monitor:** When enabled, the dash cam will enter standby mode after parking and power-off. If it detects a shock, it will automatically turn on, record a 31-second video, and then shut down. For continuous 24-hour parking monitoring, a separate hardwire kit is required.

Parking Monitor Driver Camera

When the dual dash cam cabin and front detects a collision happens, it will auto power on then record about a protected 10s video, then auto turn off.

NOTE: This function does not require a hardwire kit, please turn the option 'Parking Monitoring' ON then it will engage. Must use the original car charger to charge the dash cam.



Image: How the Parking Monitor provides hit-and-run and property protection.

- **Motion Detection:** With a 10-second pre-record feature, this function captures incidents before they fully unfold. Note: This function requires a hardwire kit to charge the dash cam for continuous use.

Car Dash Cam with Motion Detection

With a 10 - second pre - record feature, it captures the entire incident, ensuring no details are missed. Customizable motion detection area settings allow for personalized monitoring of key areas.

NOTE: Need the hardwire kit to charge dash camera to use this function.

Only records the back view
No pre-recorded



Record the entire criminal
Pre-recorded



Custom Area



Hardwire Kit Cable



(Before)
10seconds



(After)
30seconds

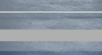


Image: Explanation of the motion detection feature and its requirements.

- **Display Modes:** The 2-inch IPS screen supports four display modes: Front View, Inside View, Front+Inside View (split

screen), and Front+Inside View (picture-in-picture).



Image: Various display modes available on the dash cam screen.

Video Playback

Videos can be played back directly on the dash cam, or by transferring files to a computer:

- **On Dash Cam:** Hold the menu button twice to enter playback mode.
- **Via USB Cable:** Connect the dash cam to a computer using the provided USB cable.
- **Using Card Reader:** Remove the memory card and insert it into the provided card reader, then connect to a computer.

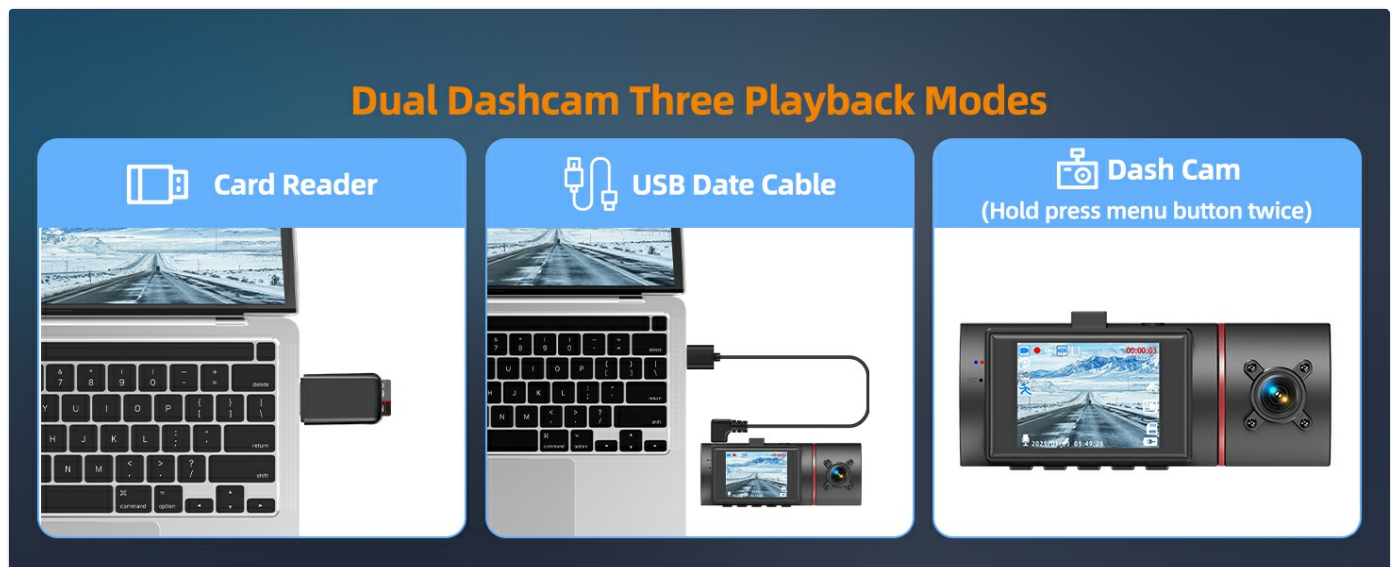


Image: Different methods for playing back recorded videos.

Important Settings & Tips

- **First Use:** Format the memory card and charge the dash cam for 60 minutes using the original car charger until fully charged.
- **Recommended Settings:**
 - Gravity sensor level: Low
 - Loop recording: 3 minutes
 - Motion detection: OFF (unless using hardwire kit for 24H monitoring)
 - Parking monitor: ON
 - Auto power off: OFF
 - Screen saver: OFF (dash cam still records when screen is off)

- Fill light: Switched off during the day and on during the night

- **Turning off Inside Camera:** Refer to the video guide for detailed instructions.

Your browser does not support the video tag.

Video: Instructions on how to turn off the inside camera on the Milerong X25 Dash Cam.

- **Setting Time/Date:** Refer to the video guide for detailed instructions.

Your browser does not support the video tag.

Video: Guide on setting the correct time and date on your Milerong X25 Dash Cam.

- **Turning off Microphone:** Refer to the video guide for detailed instructions.

Your browser does not support the video tag.

Video: Instructions on how to disable the microphone on the Milerong X25 Dash Cam.

MAINTENANCE

- **Clean Lenses:** Regularly clean the front and interior camera lenses with the provided cleaning cloth or a soft, lint-free cloth to ensure clear video quality.
- **Format Memory Card:** To maintain optimal performance and prevent data corruption, format the memory card periodically (e.g., once a month). This will erase all stored footage, so back up important videos first.
- **Temperature Considerations:** The dash cam is designed to be adaptable to various environments, including extreme weather (-4°F to 158°F). However, prolonged exposure to extreme heat or cold can affect battery life and performance. If possible, remove the dash cam from direct sunlight when parked for extended periods in hot climates.



Image: The dash cam's robust design for stable operation in diverse temperatures.

TROUBLESHOOTING

If you encounter issues with your Milerong X25 Dual Dash Cam, please refer to the following common problems and solutions:

Problem	Solution
Dash cam not turning on/recording automatically.	Ensure the original car charger is securely connected to the cigarette lighter port and the dash cam. Verify the vehicle's ignition is on. Check if the charger or cable is damaged.
Buttons not responding / Cannot access menu.	If the dash cam is currently recording, you must press the "OK" button first to pause the recording before attempting to access the menu or use other buttons.

Problem	Solution
Memory card full / Recording stops.	Ensure loop recording is enabled. Format the memory card regularly. If the issue persists, the card may be faulty and require replacement. The dash cam supports up to 64GB memory cards.
Video files are being overwritten despite being locked.	Ensure the G-sensor sensitivity is set to 'Low' to prevent accidental locking of too many files, which can fill the card quickly. If the card is full, even locked files might eventually be overwritten if the system needs space, though this is rare for truly locked files. Back up important footage regularly.
Poor video quality (blurry, dark, or overexposed).	Clean the camera lenses. Ensure WDR is enabled for balanced exposure. Check if the protective film has been removed from the lenses. Adjust the fill light setting for night use.
Inside camera not working or displaying correctly.	Check the camera's physical connection and ensure it's not obstructed. Verify settings related to the interior camera. If the issue persists, it may indicate a hardware fault.
Dash cam gets hot during operation.	It is normal for the dash cam to generate some heat during operation, especially in direct sunlight. The porous design aids in heat dissipation. If it becomes excessively hot or shuts down, ensure proper ventilation and consider parking in shade.
Missing components (Memory Card, Car Charger, Suction Cup) or broken parts.	Please contact Milerong customer support for a new replacement.

SPECIFICATIONS

Feature	Detail
Model Name	X25 Dual Dash Cam Front and Inside with 64GB Card
Video Capture Resolution	Front + Inside (Cabin): 1080P
Front Camera Angle	170° Wide Angle
Inside Camera Angle	140° Wide Angle
Display	2.0" IPS LCD Display
Memory Card Support	Up to 64GB (64GB card included)
Special Features	G-sensor, 24H Parking Mode, Night Vision (Infrared), WDR, Loop Recording, Motion Detection
Connectivity Technology	No Wireless, No APP, No WIFI, No GPS, No Bluetooth (as per product description)
Mounting Type	Suction Mount
Power Source	Car Charger (cigarette lighter port)
Product Dimensions	4 x 6 x 6 inches
Item Weight	2.72 ounces
Batteries	1 Lithium Polymer battery (included)

WARRANTY AND SUPPORT

Milerong is committed to providing high-quality products and excellent customer service. Your satisfaction is our utmost priority.

- **24 Hour Service:** We offer prompt responses with professional assistance around the clock.
- **30 Day Return Policy:** You have the right to return or exchange the product for no reason within 30 days of purchase.
- **365 Day Warranty:** Replacement of the product and availability of accessories are guaranteed within one year from the date of purchase.
- **Lifetime After-sales Service:** We provide lifetime after-sales service to every customer.

For any inquiries or support, please contact us at: milerong_service@163.com



Image: Overview of Milerong's comprehensive warranty and support services.