

UltraPro 59350

UltraPro 700 Series Z-Wave In-Wall Smart Rocker Light Dimmer User Manual

Model: 59350 | Brand: UltraPro

INTRODUCTION

This manual provides comprehensive instructions for the UltraPro 700 Series Z-Wave In-Wall Smart Rocker Light Dimmer (Model 59350). This device integrates advanced Z-Wave Plus 700 series technology with QuickFit and SimpleWire features for simplified installation and enhanced home automation. It allows for wireless control and scheduling of lighting fixtures when paired with a compatible Z-Wave hub.

IMPORTANT SAFETY INFORMATION

RISK OF ELECTRIC SHOCK

- Disconnect power at the service panel before installation.
- All wiring connections must be made with the power OFF to avoid personal injury and damage to the dimmer.
- This device is intended for installation in accordance with the National Electric Code and local regulations.
- Consult a qualified electrician if you are unsure about any part of these instructions.
- Do not use this dimmer to control a receptacle or motor-operated appliance.
- Ensure all wire connections are secure and properly insulated.

RISK OF FIRE

- Do not exceed the maximum load ratings for this device.
- Ensure the dimmer is installed in a suitable electrical box.

PACKAGE CONTENTS

- UltraPro 700 Series Z-Wave In-Wall Smart Rocker Light Dimmer (Model 59350)
- Instruction Manual

Note: Wallplate sold separately.

FEATURES

- **QuickFit Design:** Reduced housing depth (up to 20% compared to previous models) and elimination of heat tabs for easier installation in crowded switch boxes and multi-gang configurations.
- **SimpleWire Technology:** Patented auto-detecting line/load terminals simplify wiring by automatically identifying wire types. Features dual, offset ground ports for daisy-chaining.
- **Z-Wave Plus 700 Series:** Enhanced security with S2 encryption and simplified pairing via SmartStart (QR code). Offers improved network capabilities and over-the-air updates.
- **Full-Range Dimming:** Compatible with dimmable LED, CFL, and incandescent bulbs.
- **3-Way Ready:** Supports single-pole or 3-way installations with an UltraPro add-on switch (sold separately) or traditional 3-way switch.
- **Voice Control:** Compatible with Amazon Alexa and Google Assistant when connected through a compatible Z-Wave hub.
- **Remote Control:** Manage lighting from anywhere via a smartphone, tablet, or PC when connected to a Z-Wave hub.
- **Custom Scenes:** Program groups of fixtures for specific events or times through your Z-Wave hub.

UltraPro™



QuickFit™
Design

SimpleWire™
Technology



Gateway required.
See side for details.

Wallplate sold separately



Z-WAVE IN-WALL SMART DIMMER

Wirelessly control and schedule indoor
or outdoor lights from anywhere*

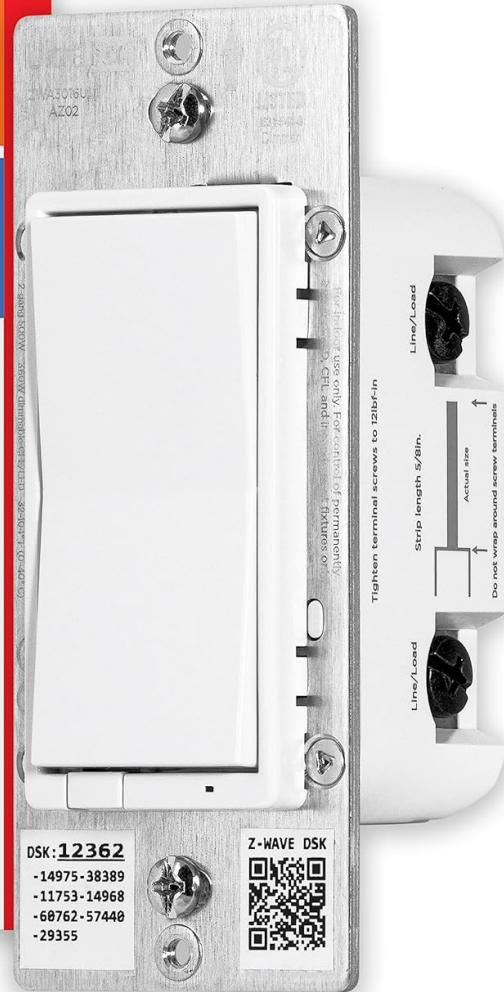
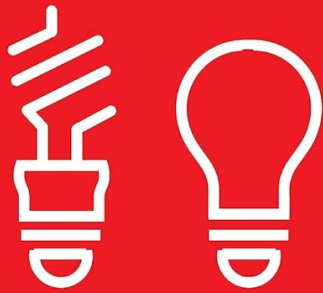
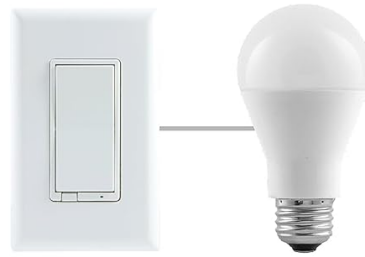


Image: UltraPro 700 Series Z-Wave In-Wall Smart Rocker Light Dimmer, highlighting QuickFit and SimpleWire technologies, Z-Wave Plus, and compatibility with Alexa and Google Home.



FULL-RANGE DIMMING

Works with
dimmable
LED, CFL and
incandescent
bulbs



SINGLE SWITCH

OR

MULTI-SWITCH*



Control lighting from up to five locations

* Requires UltraPro add-on switch (sold separately) — wallplate sold separately

Image: Illustration of full-range dimming capability and options for single-switch or multi-switch (3-way) control. Multi-switch setup requires an UltraPro add-on switch.

INSTALLATION

Wiring Instructions

1. **Turn OFF Power:** Before beginning, ensure power is disconnected at the circuit breaker or fuse box for the switch location.
2. **Remove Old Switch:** Carefully remove the existing wallplate and switch.
3. **Identify Wires:** Identify the following wires:
 - **Line (Hot):** Connects to the electrical panel.
 - **Load:** Connects to the light fixture.
 - **Neutral:** Required for smart dimmers.
 - **Ground:** Safety wire.

- **Traveler (for 3-way installations):** Connects to the add-on switch.

Note: The SimpleWire technology automatically detects Line and Load wires, simplifying this step.

4. Connect Wires:

- Connect the **ground** wire to the dimmer's ground terminal (green). The dimmer features dual, offset ground ports for convenience.
- Connect the **neutral** wire to the dimmer's neutral terminal (white).
- Connect the **line** and **load** wires to the dimmer's line/load terminals (black). SimpleWire will automatically configure them.
- For 3-way installations, connect the **traveler** wire to the dimmer's traveler terminal (yellow).

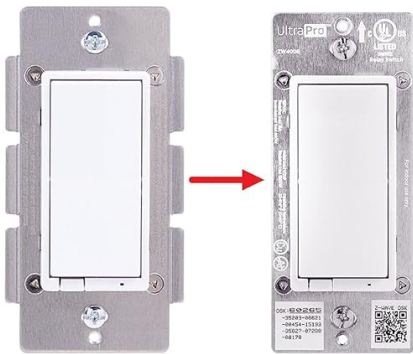
5. **Secure Dimmer:** Carefully push the wired dimmer into the electrical box. Secure it with the provided screws.

6. **Install Wallplate:** Attach the new wallplate (sold separately).

7. **Restore Power:** Turn power back ON at the circuit breaker.

QuickFit™ Design

Easily fits in crowded switch boxes



No break-off tabs



20% reduced housing depth

SimpleWire™ Technology

- Faster installation
- Patented auto-detect line/load
- Dual, offset ground ports

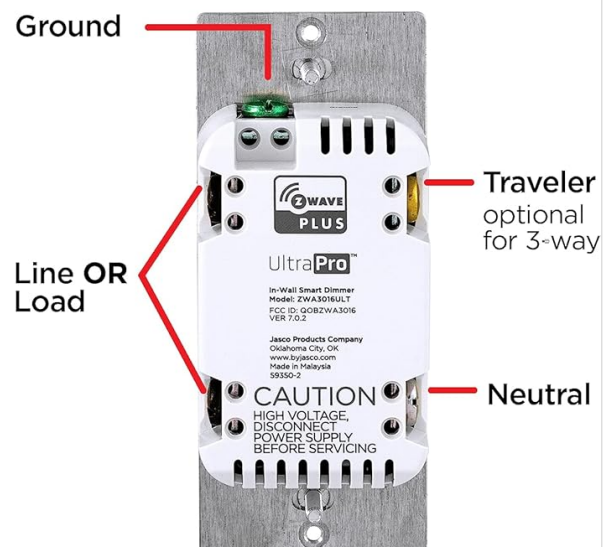
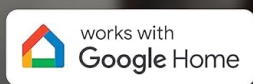


Image: QuickFit design illustrating the compact size and absence of break-off tabs, which facilitates installation in tight spaces.

VOICE CONTROL

Use **Amazon Alexa** or **Google Assistant** to operate and schedule UltraPro smart controls.*



* Use with mobile devices requires compatible gateway - sold separately.

Image: Detailed view of the dimmer's back, showing terminals for Ground, Line/Load (auto-detecting), Traveler (for 3-way), and Neutral. Also highlights SmartStart QR code and S2 Security.

SETUP (Z-WAVE PAIRING)

The UltraPro 700 Series Dimmer supports Z-Wave Plus 700 series features, including SmartStart for easy pairing and S2 security for enhanced protection.

SmartStart Inclusion

SmartStart enabled products can be added into a Z-Wave network by scanning the Z-Wave QR Code present on the product or on the DSK label with a controller providing SmartStart inclusion. No further action is needed and the SmartStart product will be added automatically within 10 minutes of being switched on in the network vicinity.

- Locate the QR code on the dimmer or its packaging.
- Open your Z-Wave hub's app and select the option to add a new device using SmartStart or by scanning a QR code.
- Scan the QR code. The dimmer will automatically pair with your hub.

Manual Inclusion (Traditional Pairing)

1. Place your Z-Wave hub into inclusion (pairing) mode. Refer to your hub's instruction manual for specific steps.
2. On the dimmer, press the top or bottom rocker switch once. The LED indicator will flash to confirm inclusion mode.
3. The hub will confirm successful pairing. The dimmer's LED will stop flashing and may turn solid.

Exclusion (Removing from Z-Wave Network)

1. Place your Z-Wave hub into exclusion (unpairing) mode. Refer to your hub's instruction manual for specific steps.
2. On the dimmer, press the top or bottom rocker switch once. The LED indicator will flash to confirm exclusion mode.
3. The hub will confirm successful exclusion. The dimmer's LED will stop flashing.

Note: To perform a factory reset, pull the air gap switch (located at the bottom of the dimmer) out, then push it back in while holding the bottom rocker switch for 10 seconds. The LED will flash rapidly to confirm reset. This should only be used when the primary controller is missing or inoperable.

OPERATION

Manual Control

- **Turn ON/OFF:** Press the top of the rocker to turn lights ON. Press the bottom of the rocker to turn lights OFF.
- **Dim/Brighten:** Press and hold the top of the rocker to gradually brighten lights. Press and hold the bottom of the rocker to gradually dim lights. Release the rocker when the desired brightness is reached.

Smart Control (via Z-Wave Hub)

Once paired with a Z-Wave hub, you can control the dimmer remotely using the hub's mobile application or web interface. This includes:

- Turning lights ON/OFF.
- Adjusting brightness levels.
- Creating schedules for automated lighting.
- Integrating into custom scenes and automations.

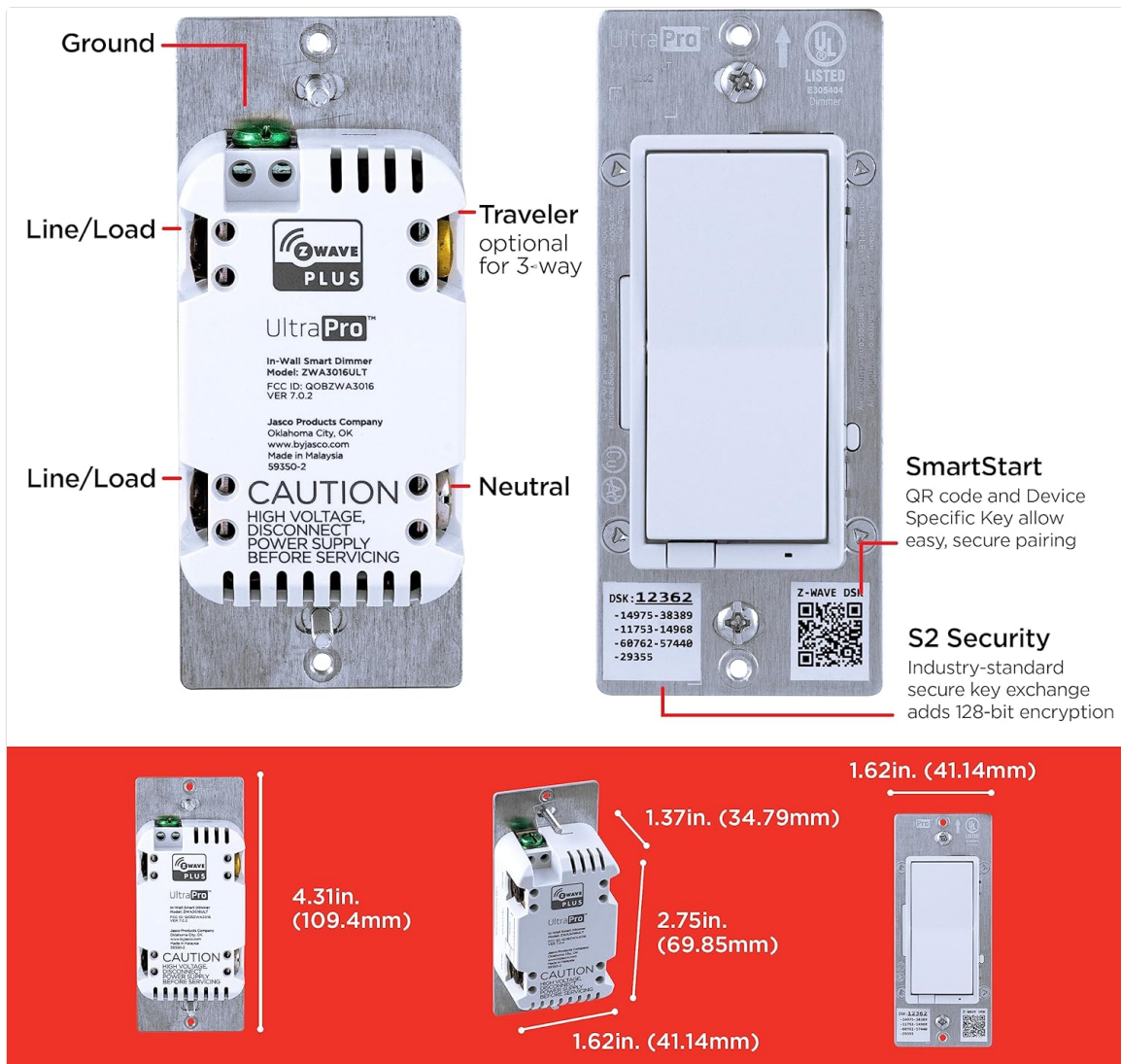


Image: A smartphone screen showing an application for remote control of outdoor lighting, demonstrating the "Control From Anywhere" feature.

Voice Control

If your Z-Wave hub is integrated with Amazon Alexa or Google Assistant, you can control the dimmer using voice commands. Ensure your dimmer is named appropriately in your Z-Wave hub's settings (e.g., "Living Room Light").

- **Alexa:** "Alexa, turn on Living Room Light." "Alexa, dim Living Room Light to 50%."
- **Google Assistant:** "Hey Google, turn off Living Room Light." "Hey Google, set Living Room Light to bright."



* Use with mobile devices requires compatible gateway — sold separately

CUSTOM SCENES

Program groups of hardwired fixtures for entertaining, events or specific times.



Image: An Amazon Echo Dot smart speaker, symbolizing the voice control functionality with Amazon Alexa and Google Assistant.



CONTROL FROM ANYWHERE

on any smartphone, tablet or PC.

* Use with mobile devices requires compatible gateway — sold separately

Image: A smart dimmer switch in a modern living room setting, demonstrating the ability to program custom lighting scenes.

MAINTENANCE

- **Cleaning:** Wipe the dimmer and wallplate with a soft, damp cloth. Do not use abrasive cleaners or solvents.
- **Firmware Updates:** The 700 series supports over-the-air (OTA) firmware updates. Check your Z-Wave hub's documentation for instructions on how to update device firmware. Regular updates can improve performance and add new features.
- **Air Gap Switch:** The air gap switch (located at the bottom of the dimmer) can be pulled out to completely disconnect power to the load for maintenance or bulb replacement.

TROUBLESHOOTING

Problem	Possible Cause	Solution
Light does not turn ON/OFF or dim.	<ul style="list-style-type: none"> Power is off at the breaker. Incorrect wiring. Bulb is burned out or incompatible. Air gap switch is pulled out. 	<ul style="list-style-type: none"> Check circuit breaker and restore power. Verify wiring connections according to the Installation section. Replace bulb or ensure it is dimmable. Push the air gap switch fully in.
Dimmer cannot be paired with Z-Wave hub.	<ul style="list-style-type: none"> Dimmer is already paired to another network. Hub is not in inclusion mode. Distance from hub is too great. 	<ul style="list-style-type: none"> Perform Z-Wave exclusion first (see Setup section). Ensure hub is actively searching for new devices. Move hub closer temporarily or use a Z-Wave repeater.
Lights flicker or buzz when dimmed.	<ul style="list-style-type: none"> Incompatible or low-quality dimmable bulbs. Minimum load requirement not met. 	<ul style="list-style-type: none"> Try different brands or types of dimmable LED/CFL bulbs. Ensure the total wattage of connected bulbs meets the dimmer's minimum load (if applicable).
Delay in light response after pressing button.	<ul style="list-style-type: none"> Firmware behavior (waiting for dimming input). Z-Wave network latency. 	<ul style="list-style-type: none"> Check for available firmware updates for the dimmer or hub. Ensure a strong Z-Wave mesh network.

SPECIFICATIONS

Model Number	59350
Brand	UltraPro
Z-Wave Frequency	908.42 MHz (US)
Power	120VAC, 60Hz
Maximum Load	Incandescent: 600W CFL/LED: 300W

Minimum Load	15W (for optimal performance with LED/CFL)
Operating Temperature	32-104° F (0-40° C)
Dimensions (H x W x D)	4.25 x 1.75 x 1.75 inches (approx.)
Connectivity Protocol	Z-Wave Plus (700 Series)
Circuit Type	Single-pole or 3-way
Controller Type	Amazon Alexa, Google Assistant, SmartThings (via Z-Wave hub)
UPC	030878593502

SUPPORT

For technical support, warranty information, or to view additional products, please visit the UltraPro website or contact customer service.

Note: Specific warranty details are not provided in this document. Please refer to the product packaging or manufacturer's website for current warranty information.