

[Manuals.plus](#) /

› [Linksys](#) /

› Linksys Velop Pro WiFi 6E Mesh Router User Manual

Linksys MXEC623-AMZ

Linksys Velop Pro WiFi 6E Mesh Router User Manual

Model: MXEC623-AMZ (3 Pack)

Brand: Linksys

INTRODUCTION

The Linksys Velop Pro WiFi 6E Mesh Router system provides a smarter WiFi network experience. Utilizing Cognitive Mesh technology, it intelligently optimizes network performance by identifying and resolving congestion issues, and managing signal and channel selection. This system offers brand-new access to 160 MHz channels dedicated to the fastest and newest devices, delivering true gigabit speeds up to 5.4 Gbps. Designed for easy setup and comprehensive coverage, it supports over 200 devices across up to 9000 sq. ft. with a 3-pack system.



Image: Three white Linksys Velop Pro 6E Mesh Router nodes, showcasing the sleek design of the system.

WHAT'S IN THE BOX

Your Linksys Velop Pro WiFi 6E Mesh Router package includes the following components:

- 3x Linksys Velop Pro 6E Nodes
- 3x Power Adapters
- 1x Ethernet Cable
- Quick Installation Guide
- Regulatory and Warranty Documentation (as applicable)



Image: The contents of the Linksys Velop Pro 6E Mesh Router 3-pack box, showing three white router nodes, power adapters, an Ethernet cable, and documentation.

SETUP GUIDE

Setting up your Linksys Velop Pro WiFi 6E Mesh system is designed to be straightforward using the Linksys App. Follow these steps for a quick and easy installation:

1. **Download the Linksys App:** Search for "Linksys App" on your mobile device's app store and install it.
2. **Connect the Parent Node:** Connect one of the Velop Pro 6E nodes to your modem using the provided Ethernet cable. Plug in the power adapter.
3. **Follow In-App Instructions:** Open the Linksys App and follow the on-screen prompts. The app will guide you through connecting the remaining nodes (child nodes) and configuring your Wi-Fi network name and password.
4. **Position Child Nodes:** Place the additional nodes strategically throughout your home to ensure optimal coverage. The app may provide recommendations for placement.
5. **Connect Devices:** Once the network is set up, connect your devices (laptops, smartphones, tablets, smart home

devices) to your new Wi-Fi network.

Industry-leading technology.

Qualcomm® Immersive Home 316 platform delivers the ultimate WiFi 6E experience. This next-gen platform blends innovative mesh capabilities with advanced tri-band WiFi 6E features.

Qualcomm
immersive home
316 platform

Wi-Fi 6E



Image: A visual representation of the easy setup process for the Linksys Velop Pro 6E, highlighting the use of the Linksys App to download, name the network, and get online.

OPERATING YOUR MESH SYSTEM

The Linksys Velop Pro WiFi 6E Mesh system is designed for seamless and secure operation, providing a robust and intelligent network for your home or business.

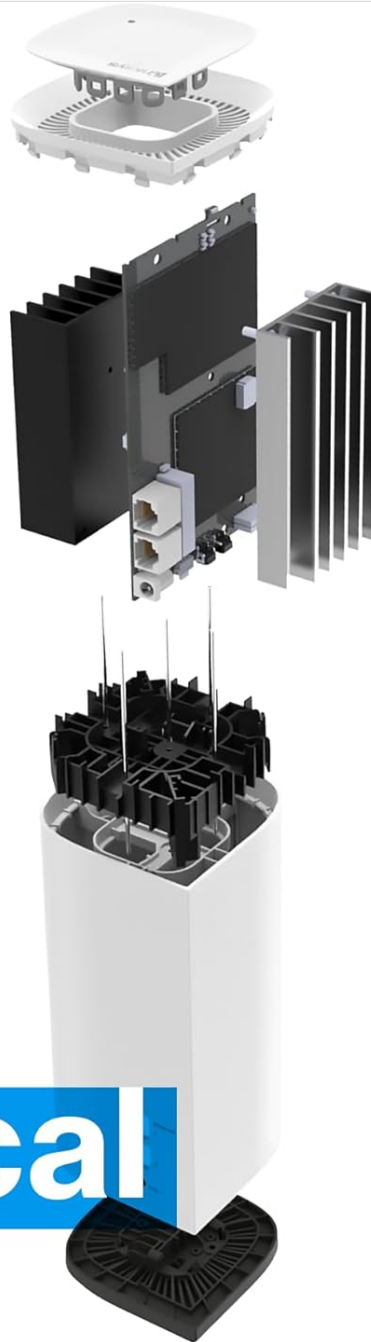
Cognitive Mesh Technology

Cognitive Mesh technology continuously monitors your network, optimizing performance in real-time. It automatically identifies and resolves congestion issues, and intelligently manages signal and channel selection to ensure the best possible connection for all your devices. For optimal performance, ensure the Cognitive Mesh node is set up as the Parent Node (connected to the modem) and Intelligent Mesh Nodes as child nodes.

WiFi 6E Speed and Capacity

Leverage the power of WiFi 6E with access to the new 6 GHz frequency band, offering dedicated 160 MHz channels for the fastest and newest devices. Experience true gigabit speeds up to 5.4 Gbps. The 3-pack system provides coverage for up to 9000 sq. ft. and can connect over 200 devices simultaneously without compromising performance.

802.11ax WiFi Technology



WiFi Range
Up to 3,000 Sq Ft
per node

WiFi Bands
2.4 GHz, 5 GHz
& 6 GHz

Security
WPA2/WPA3
Mixed Personal

Processor
1 GHz Dual-Core

Ports
1x Gigabit LAN
1x Gigabit WAN

**Technology
Protocols**
IPv4, IPv6

Warranty
3 years

**Technical
specs.**

Image: A person wearing a VR headset, illustrating the high-speed capabilities of WiFi 6E for demanding applications like virtual reality. The image emphasizes connecting on time, every single time, with an extra 6 GHz band connection to cut down interference and improve speeds.

Linksys App Features

The Linksys App provides comprehensive control over your network:

- **Parental Controls:** Manage internet access and content for family members.
- **Guest WiFi:** Create a separate, secure network for guests.
- **Remote Management:** Monitor and manage your network from anywhere in real-time.

- **Network Privacy:** Linksys ensures no app usage or online activity tracking.

MAINTENANCE

To ensure your Linksys Velop Pro WiFi 6E Mesh system continues to perform optimally, consider the following maintenance tips:

- **Automatic Firmware Updates:** The system is designed to receive automatic firmware updates, ensuring your network remains secure and up-to-date with the latest features and performance enhancements. Ensure your nodes are connected to the internet for these updates to occur.
- **Optimal Placement:** Periodically review the placement of your Velop nodes. Ensure they are in open areas, away from large metal objects, thick walls, and other electronic devices that could cause interference.
- **Keep Vents Clear:** Ensure the ventilation openings on your nodes are not obstructed to prevent overheating and maintain stable performance.
- **Regular Reboots:** While not always necessary, a periodic reboot of your modem and Velop system (unplugging power for 10-15 seconds and plugging back in) can help refresh network connections and resolve minor performance issues.

TROUBLESHOOTING

If you encounter issues with your Linksys Velop Pro WiFi 6E Mesh system, try the following common troubleshooting steps:

- **No Internet Connection:**
 - Check the internet light on your Velop parent node. If it's red or off, there might be an issue with your modem or internet service.
 - Reboot your modem: Unplug the power from your modem, wait 10 seconds, then plug it back in. Wait for 2 minutes for it to fully restart.
 - Reboot your Velop system: Unplug the power from all Velop nodes, wait 10 seconds, then plug them back in. Wait for the lights to turn blue or purple, indicating they are connected and working.
- **Slow Speeds or Intermittent Connection:**
 - Ensure optimal placement of child nodes to maximize coverage and signal strength. Avoid placing nodes behind large obstacles or in enclosed spaces.
 - Check for interference from other electronic devices (e.g., microwaves, cordless phones).
 - Use the Linksys App to check the status of your nodes and connected devices.
- **Cannot Connect to Wi-Fi:**
 - Verify you are entering the correct Wi-Fi network name (SSID) and password.
 - Ensure your device's Wi-Fi is enabled.
 - Try restarting the device you are trying to connect.

For more detailed troubleshooting or advanced configurations, please refer to the official User Manual (PDF) available for download: [Linksys Velop Pro 6E User Manual \(PDF\)](#).

SPECIFICATIONS

Below are the key technical specifications for the Linksys Velop Pro WiFi 6E Mesh Router (Model: MXEC623-AMZ):

Feature	Detail
Product Dimensions	3.54 x 3.54 x 7.56 inches
Item Weight	7.61 pounds
Item Model Number	MXEC623-AMZ
Brand	Linksys
Model Name	Linksys Velop Pro 6E
Special Features	Beamforming, Guest Mode, Internet Security, LED Indicator, Parental Control
Frequency Band Class	Tri-Band (2.4 GHz, 5 GHz, 6 GHz)
Wireless Communication Standard	802.11ac, 802.11ax, 802.11b, 802.11g, 802.11n
Compatible Devices	Gaming Console, Personal Computer, Security Camera, Smartphone, Tablet
Recommended Uses	Business, Gaming, Home
Processor	1 GHz Dual-Core
Ports	1x Gigabit LAN, 1x Gigabit WAN per node
WiFi Range	Up to 3,000 Sq Ft per node (9,000 sq. ft. for 3-pack)



Make the most of WiFi 6E speed.

Connect on time, every single time.

WiFi 6E offers an extra 6 GHz band connection that helps cut down on interference and improves speeds to your connected devices.

Image: An exploded diagram of a Linksys Velop Pro 6E node, detailing its internal components and key technical specifications such as WiFi technology, bands, security, processor, ports, and warranty.

WARRANTY AND SUPPORT

The Linksys Velop Pro WiFi 6E Mesh Router system is backed by a 3.5 Year Warranty. Linksys also provides 24/7 worldwide Technical Support to assist you with any questions or issues you may encounter.

For further assistance, please refer to the comprehensive User Manual (PDF) or visit the official Linksys support website.

- User Manual (PDF):
<https://manuals.plus/m/4e86fb21ddc9693f9402cbc42f065fd0ac1bde633a0df7bf46f57ec1ad26a700>
- Linksys Official Store: [Visit the Linksys Store on Amazon](#)

