

Kinganda Q71

Kinganda Q71 Clip-On Open Ear Headphones User Manual

Model: Q71 | Brand: Kinganda

1. INTRODUCTION

Thank you for choosing the Kinganda Q71 Clip-On Open Ear Headphones. These innovative wireless earbuds are designed to provide a comfortable and secure listening experience while allowing you to remain aware of your surroundings. Featuring Bluetooth 5.3 technology, a lightweight design, and IPX4 water resistance, the Q71 is ideal for various activities including sports, commuting, and daily use.

2. WHAT'S IN THE BOX

- Kinganda Q71 Clip-On Open Ear Headphones (Left & Right)
- Charging Case
- USB Type-C Charging Cable
- Instruction Manual

3. PRODUCT OVERVIEW

The Kinganda Q71 headphones feature a unique clip-on design that rests comfortably on your ear without entering the ear canal, ensuring comfort and situational awareness. The compact charging case provides extended battery life and features an LED display for battery status.



Figure 3.1: Kinganda Q71 Clip-On Open Ear Headphones and Charging Case. The earbuds are securely nestled in the charging case, which features a digital display indicating battery levels.

Charging pod can be fully charged in just 1 hour

Charging pod can charge two headphones continuously for 4 times after fully charged



Figure 3.2: Detailed view of an earbud's internal components, highlighting the Bluetooth 5.3 chip and emphasizing its lightweight construction.

4. SETUP

4.1. Initial Pairing

1. Ensure the earbuds are fully charged.
2. Open the charging case. The earbuds will automatically enter pairing mode (indicated by flashing lights on the earbuds).
3. On your device (smartphone, tablet, computer), enable Bluetooth.
4. Search for "YYK-Q71" in the list of available Bluetooth devices and select it to connect.
5. Once connected, a voice prompt will confirm successful pairing.

Your browser does not support the video tag.

Video 4.1: Demonstrates the initial pairing process for the Kinganda Q71 Clip-On Earbuds, showing how to activate pairing mode and connect to a device.

4.2. Wearing the Earbuds

The Q71 earbuds are designed to clip securely onto your ear. Identify the left (L) and right (R) earbuds. Gently place the earbud over your ear, ensuring the speaker part is positioned towards your ear canal for optimal sound. The clip will rest comfortably behind your ear.

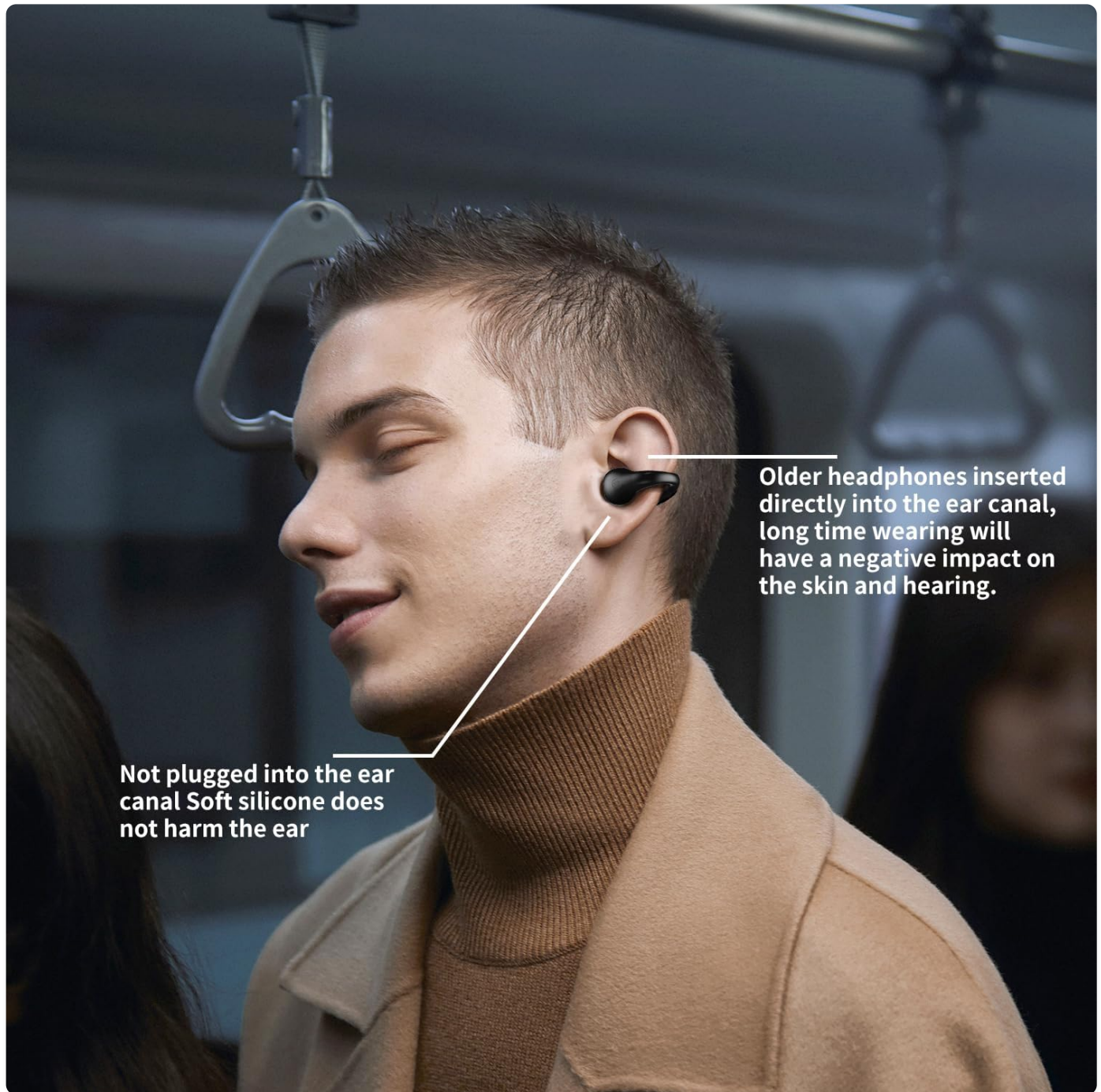


Figure 4.1: Proper wearing of the Kinganda Q71 earbud, illustrating how the open-ear design allows for environmental awareness.

Your browser does not support the video tag.

Video 4.2: Shows the correct method for clipping the Q71 earbuds onto the ear, ensuring a secure and comfortable fit.

5. OPERATING INSTRUCTIONS

5.1. Button Controls

The Q71 earbuds feature multi-function buttons for easy control of music and calls. The physical buttons are designed to prevent accidental touches during adjustments.

Anti-mistouching Physical Button

One-button summoning multifunction



Figure 5.1: Visual guide to the multi-function button controls on the Kinganda Q71 earbuds.

- **Play/Pause:** Single click the button on either earbud.
- **Next Song:** Double click the button on the right earbud.
- **Previous Song:** Double click the button on the left earbud.
- **Volume Up:** Triple click the button on the right earbud.
- **Volume Down:** Triple click the button on the left earbud.
- **Answer/End Call:** Single click the button on either earbud during an incoming call.
- **Reject Call:** Press and hold the button on either earbud for 2 seconds during an incoming call.
- **Activate Voice Assistant (Siri/Google Assistant):** Press and hold the button on either earbud for 1 second.

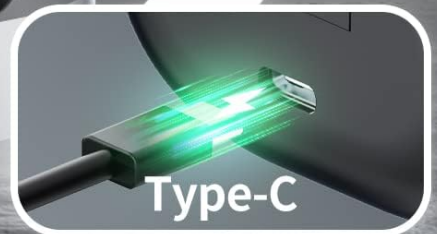
5.2. Charging the Earbuds and Case

The charging case features an LED display that shows the battery percentage of the case and the charging status of each earbud (L for left, R for right).

The charging case can be fully charged in just 1 hour

The charging case can charge two headphones 4 times continuously after a full charge

30



Type-C

Figure 5.2: The charging case's LED display indicates the overall battery level and individual earbud charging status.

- **Charging Earbuds:** Place the earbuds into their respective slots in the charging case. They will automatically begin charging. The LED display will show charging progress for each earbud.
- **Charging Case:** Connect the provided USB Type-C cable to the charging port on the case and plug the other end into a USB power source (e.g., wall adapter, computer USB port). The LED display will show the case's battery percentage increasing during charging.

6. MAINTENANCE

6.1. Cleaning

Regular cleaning helps maintain optimal performance and hygiene. Use a soft, dry, lint-free cloth to wipe the earbuds and charging case. Avoid using abrasive materials, alcohol, or chemical cleaners.

6.2. Water Resistance (IPX4)

The Kinganda Q71 earbuds are IPX4 water-resistant, meaning they are protected against splashing water from any

direction. This makes them suitable for workouts and light rain. They are **not** designed for submersion in water or exposure to heavy rain.

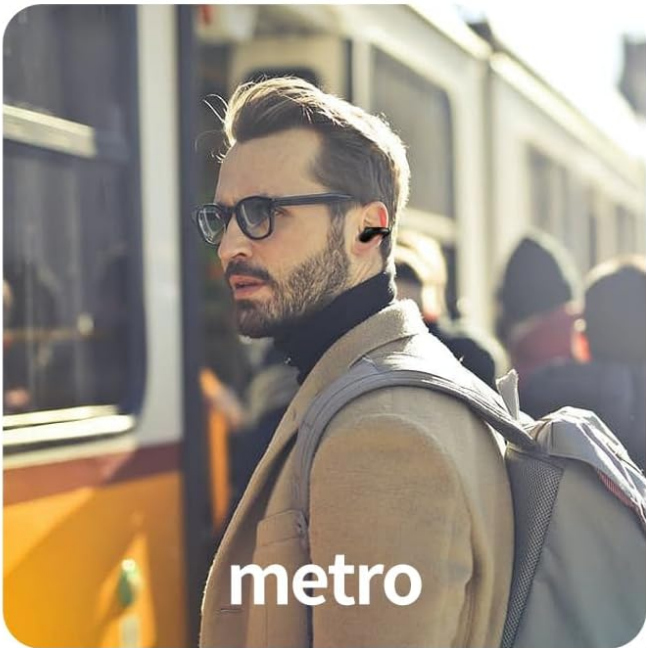
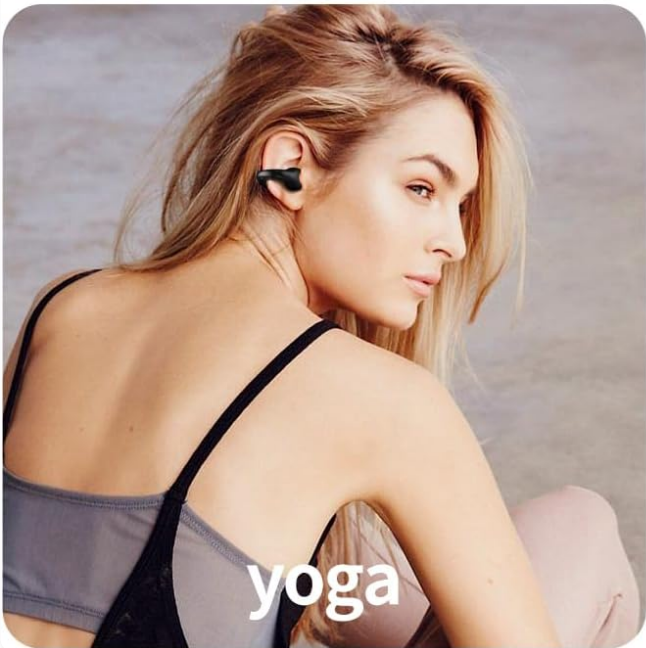
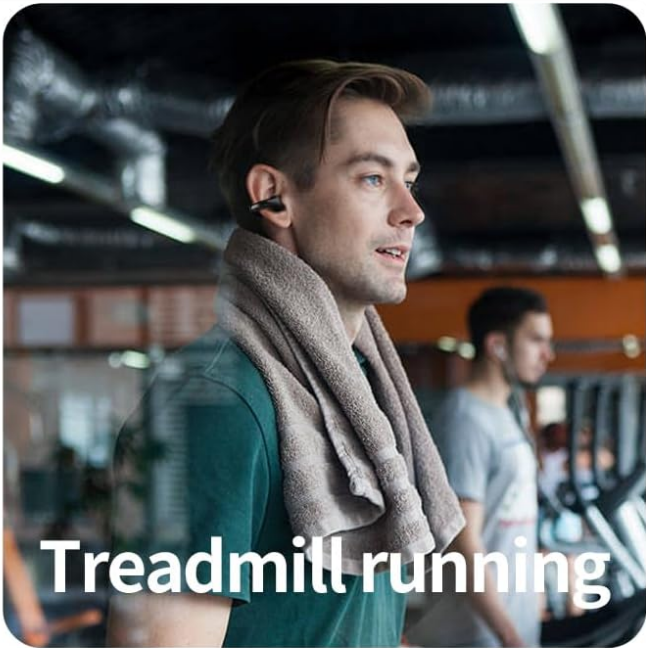


Figure 6.1: The IPX4 rating ensures the earbuds can withstand splashes and light rain, making them suitable for active use.

6.3. Storage

When not in use, store the earbuds in their charging case to protect them from dust, damage, and to keep them charged. Store the case in a cool, dry place away from direct sunlight and extreme temperatures.

7. TROUBLESHOOTING

Issue	Possible Solution
-------	-------------------

Issue	Possible Solution
Earbuds not pairing/connecting	Ensure earbuds are charged. Turn off and on Bluetooth on your device. Forget "YYK-Q71" from your device's Bluetooth list and re-pair. Place earbuds back in the case, close, wait a few seconds, then open again.
Only one earbud working	Ensure both earbuds are charged. Place both earbuds back in the charging case, close the lid, and then open it again to reset the connection. Try re-pairing the earbuds with your device.
Low volume or poor sound quality	Adjust the volume on both your device and the earbuds. Ensure earbuds are worn correctly and securely. Clean the speaker areas of the earbuds. Move closer to your connected device to avoid interference.
Charging case not charging	Ensure the USB Type-C cable is properly connected. Try a different USB port or power adapter.

8. SPECIFICATIONS

Feature	Detail
Model Name	Q71
Connectivity Technology	Wireless
Wireless Communication Technology	Bluetooth
Bluetooth Version	5.3
Bluetooth Range	100 Meters
Battery Life (Earbud)	6 Hours
Total Playtime with Charging Case	Up to 80 Hours
Charging Case Battery Capacity	300mAh
Water Resistance Level	IPX4
Ear Placement	Open Ear
Earpiece Shape	Earclip
Control Type	Media Control (Button)
Item Weight	0.18 OZ (per earbud) / 4.2 ounces (total package)
Material	Plastic (Earbuds), [PO] (Carrying Case)
Manufacturer	Kinganda


9. WARRANTY AND SUPPORT

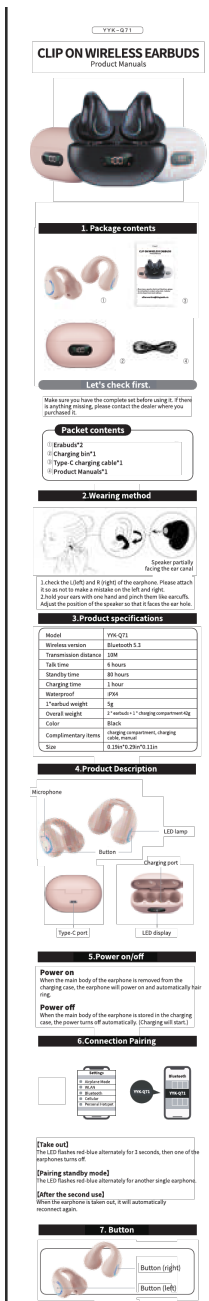
Kinganda products come with a standard manufacturer's warranty. For detailed warranty information, technical support, or customer service inquiries, please refer to the contact information provided in your product packaging or visit the official Kinganda website.

You may also refer to the official User Manual (PDF) available at:

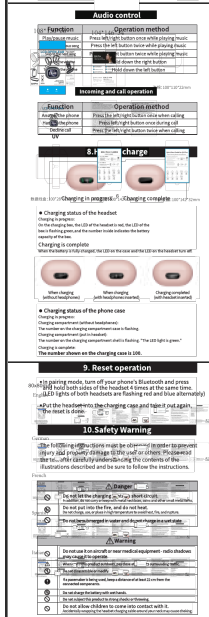
<https://manuals.plus/m/80852dff210946e3109d65f43f0f8c7f1139b6834c04150c5e1ec3315918312b>

Related Documents - Q71

	<p>Kinganda YYK-Q71 Clip-On Wireless Earbuds User Manual</p> <p>Comprehensive user manual for the Kinganda YYK-Q71 Clip-On Wireless Earbuds, covering package contents, wearing instructions, product specifications, power on/off, pairing, button controls, charging, reset operations, safety warnings, and after-sales service.</p>
	<p>YYK-Q71 Clip-On Wireless Earbuds: User Manual & Features</p>

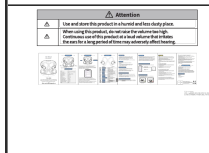


Comprehensive user manual for the YYK-Q71 Clip-On Wireless Earbuds. Learn about package contents, wearing, specifications, pairing, controls, charging, and safety.



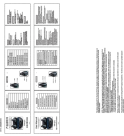
[Q16 Pro Open-Ear True-Wireless Earbuds - User Guide and Features](#)

Discover the Q16 Pro Open-Ear True-Wireless Earbuds. Featuring ergonomic design, open-ear air conduction, IPX6 waterproofing, and 14.2mm drivers for powerful sound. Includes quick start guide and FCC compliance information.



[Kinganda HYK-580 Wireless Earbuds User Manual](#)

Comprehensive user manual for the Kinganda HYK-580 wireless earbuds, covering setup, pairing, operation, charging, and troubleshooting.



[YYKSQ71 Bluetooth Headset User Manual and Specifications](#)

This document provides detailed specifications and usage instructions for the YYKSQ71 Bluetooth headset, including charging, power on/off, resetting, and music/call controls.