

Manuals+

[Q & A](#) | [Deep Search](#) | [Upload](#)

[manuals.plus](#) /

› [Makeid](#) /

› [Makeid L1 Label Maker Machine User Manual](#)

Makeid L1

Makeid L1 Label Maker Machine User Manual

Model: L1 | Brand: Makeid

INTRODUCTION

The Makeid L1 Label Maker Machine is a portable, wireless thermal printer designed for creating custom labels for home, school, and office use. It connects wirelessly to your smartphone via Bluetooth, allowing you to design and print labels with various fonts, templates, and icons using the dedicated MakeID-Life app. This manual provides comprehensive instructions for setting up, operating, and maintaining your L1 Label Maker.



Figure 1: Makeid L1 Label Maker Machine and example labels.

WHAT'S IN THE BOX

Upon unboxing your Makeid L1 Label Maker, please ensure all the following items are present:

- Makeid L1 Label Maker Machine (Beige, 203dpi model)
- One 4-meter roll of label tape
- USB charging cable
- User Manual (this document)

SETUP

1. Charging the Device

Before first use, fully charge your Makeid L1 Label Maker. Connect the provided USB charging cable to the label maker and a compatible USB power source (e.g., computer USB port, wall adapter). The indicator light will show charging status.



Figure 2: Power on/off button and charging port location.

2. Loading Label Tape

The Makeid L1 supports various label tape widths and types. To load tape:

1. Open the lid of the label maker.

2. Insert the label tape roll into the designated slot, ensuring the tape feeds out correctly.
3. Close the lid securely.



Figure 3: Instructions for opening the lid and replacing tape.

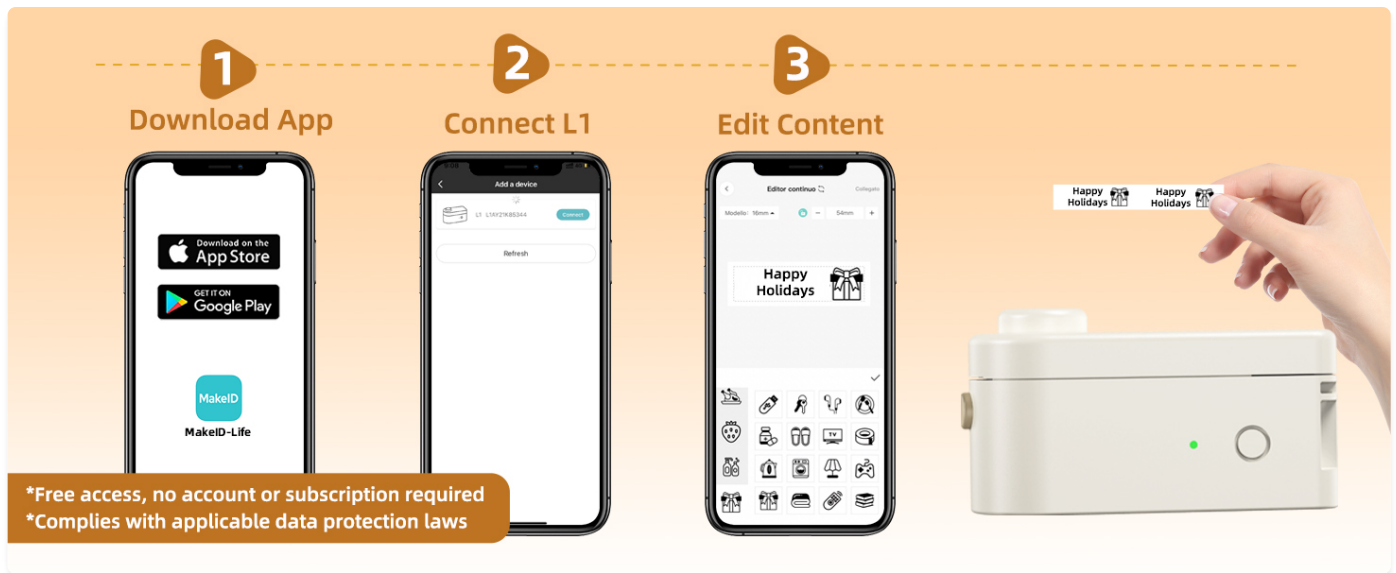


Figure 4: Examples of compatible label tapes.

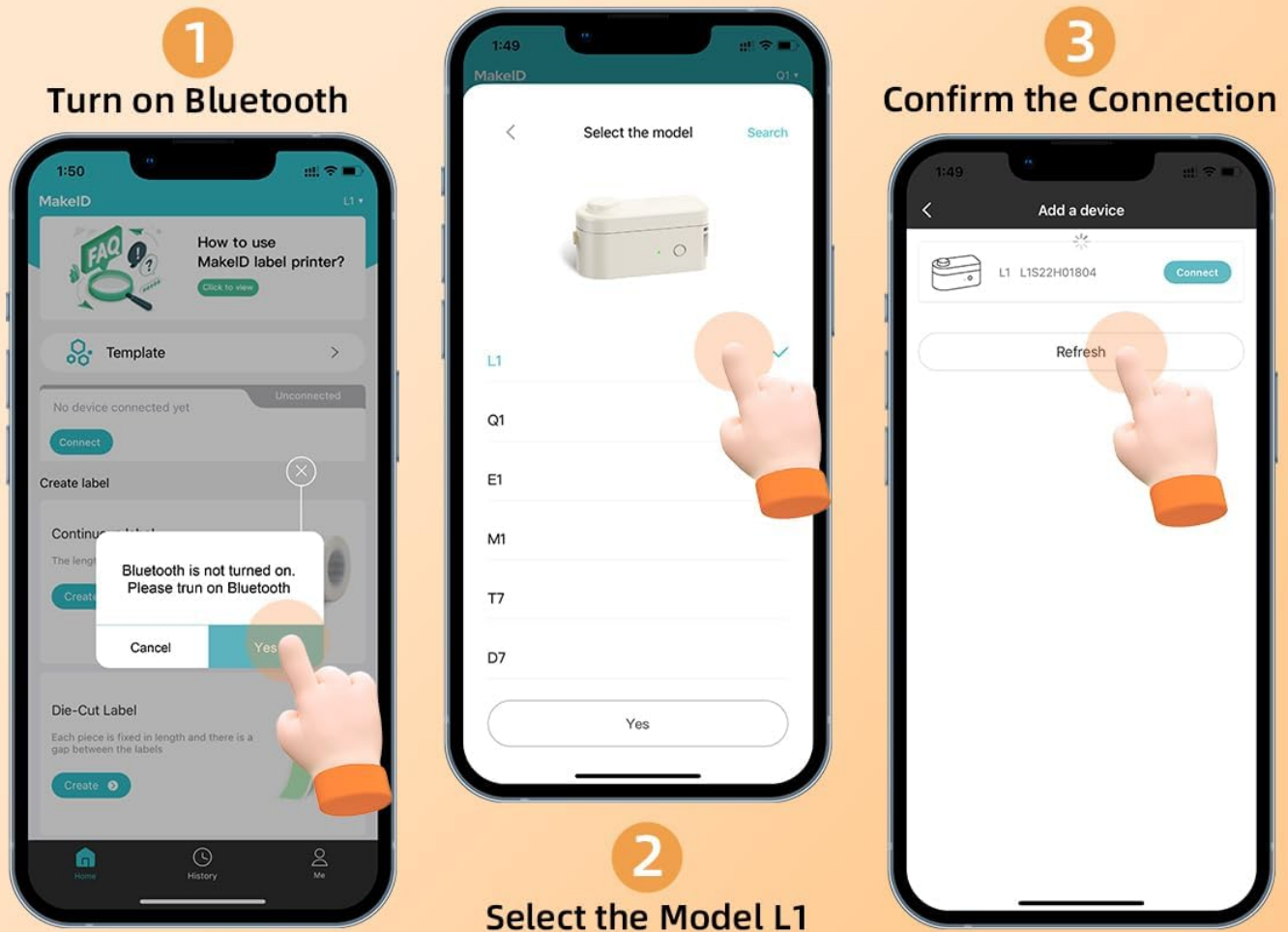
3. App Download and Bluetooth Connection

The Makeid L1 operates via the "MakeID-Life" app. Follow these steps to connect:

1. Download the "MakeID-Life" app from your smartphone's app store (Google Play for Android, App Store for iOS).
2. Ensure Bluetooth is enabled on your smartphone.
3. Open the MakeID-Life app and follow the on-screen prompts to connect to your L1 Label Maker. The app will typically detect the device automatically.

Easy to Start

User-Friendly Bluetooth Connection



MakeID-Life

Figure 5: Steps for downloading the app and connecting via Bluetooth.

The app offers free access and does not require account registration. It complies with applicable data protection laws.

OPERATING INSTRUCTIONS

1. Designing Your Label

The MakeID-Life app provides extensive customization options:

- **Text:** Enter your desired text. You can choose from multiple font styles and adjust size.
 - **Icons & Symbols:** Access a library of over 600 icons and symbols to enhance your labels.
 - **Templates:** Utilize over 400 pre-designed templates for various purposes.
 - **Special Functions:** Create barcodes, QR codes, tables, dates, borders, and patterns. The app also supports drawing/doodling.
-

Continuously Updated Every Month

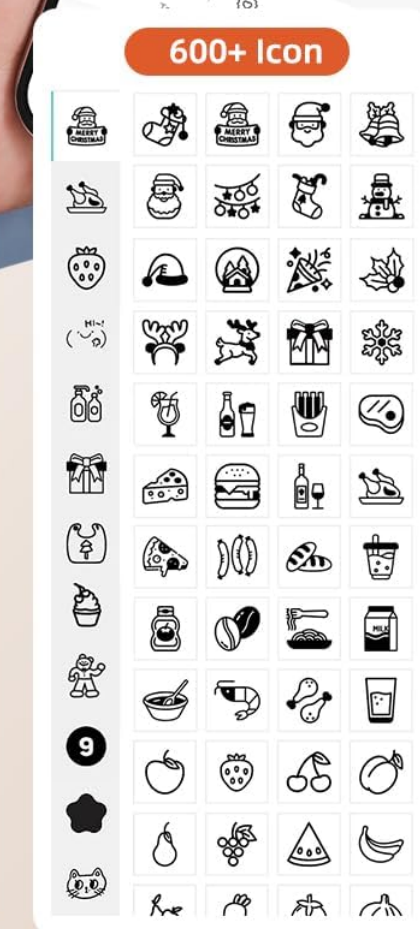


Figure 1 displays 15 stylized variations of the text "MAKEiD-Life". The variations include different font styles, weights, and cases, such as "MAKEiD-Life", "MAKEiD-Life", "MAKEiD-Life", "MakeID-Life", "MakelD-Life", "MAKEiD-Life", "MAKEiD-Life", "MAKEID-LIFE", "MAKEiD-Life", "MAKEiD-Life", "MAKEiD-Life", "MAKEiD-Life", "MAKEiD-Life", "MAKEiD-Life", and "MAKEiD-Life".

		<		

Henry's Pen 16mm

MERRY X-MAS Season's Greetings! 12mm

9mm

12/10 Open date

Olivia's Water Cup

100 Points

Have a good day

Almond cake \$19.50

Merry Christmas

TAX RETURNS

\$19.50

Cheers to warm holiday memories!

Best wishes on this holiday season

Mathematics

Figure 6: App features for label design.



Figure 7: Customizing labels with drawings in the app.

2. Printing Your Label

Once your design is complete:

1. Review the print preview in the app to ensure the label appears as desired.
2. Select the number of copies if needed.
3. Tap the "Print" button in the app. The label maker will begin printing.



Figure 8: Workflow from app download to printing.

3. Cutting the Label

The Makeid L1 features a built-in cutter for clean and precise label separation. After printing, simply press the cutter button located on the side of the device to cut the label. No scissors or external blades are required.

Durable and Crisp Print Labels



Figure 9: Built-in cutter for professional and safe label cutting.

4. Label Types and Applications

The L1 supports both continuous and die-cut label tapes, offering versatility for various labeling needs. Labels are waterproof, oil-proof, friction resistant, light resistant, and do not fade, ensuring durability.

Two Types of Label Printing

Continuous Labels



No Worries of Lengthy Text



Die-Cut Labels

Unlock More Order and Productivity



Figure 10: Continuous vs. Die-Cut label printing.



Figure 11: Durable and crisp print labels.

Common Applications:

- **Cable Management:** Organize charging cables, headphones, and other electronic wires.
- **Office Organization:** Label files, folders, shelves, and office supplies.
- **Kitchen Storage:** Label spice jars, food containers, and pantry items.
- **Personal Items:** Mark lunchboxes, water bottles, school supplies, and other personal belongings.
- **Medical Reminders:** Label pill organizers or medication bottles for clarity.

Embrace Efficiency

Bid Farewell to Chaos

Classification



Name Tag



Personal Items



Mark Easy-To-Lose Items



Kitchen



Clothes storage



Figure 12: Examples of how the label maker can be used for organization.



Figure 13: Diverse applications for the Makeid L1 label maker.

5. Official Product Video

Your browser does not support the video tag.

Video 1: Official MakeID L1 Portable Bluetooth Thermal Label Maker overview. This video demonstrates the product's features, ease of use, and various applications for organization in different settings.

MAINTENANCE

To ensure the longevity and optimal performance of your Makeid L1 Label Maker:

- **Cleaning:** Regularly wipe the exterior of the device with a soft, dry cloth. For the print head, refer to the app's maintenance section or contact support for specific cleaning instructions to avoid damage.
- **Battery Care:** Avoid completely draining the battery frequently. Charge the device when the battery is low. If storing for an extended period, charge it to about 50% and recharge every few months to preserve battery health.
- **Storage:** Store the label maker in a cool, dry place away from direct sunlight and extreme temperatures.

TROUBLESHOOTING

If you encounter issues with your Makeid L1 Label Maker, try the following common troubleshooting steps:

Problem	Possible Cause	Solution
Device not turning on	Low battery; Power button not pressed correctly	Charge the device fully. Press and hold the power button for a few seconds.
Cannot connect via Bluetooth	Bluetooth off; Device out of range; App issue	Ensure Bluetooth is on. Move device closer to phone. Restart app/phone.
Poor print quality	Low battery; Dirty print head; Incorrect label type	Charge device. Clean print head (refer to manual/support). Ensure correct label tape is used.
Label not feeding/cutting	Tape jammed; Cutter obstructed	Open lid and check for tape jams. Clear any obstructions around the cutter.

If these steps do not resolve the issue, please contact Makeid customer support for further assistance.

SPECIFICATIONS




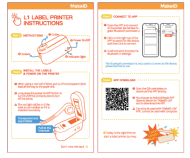

Feature	Detail
Brand	Makeid
Model Name	L1
Printing Technology	Thermal
Resolution	203 x 203 DPI (current model)
Connectivity Technology	Bluetooth
Compatible Devices	Smartphones (iOS & Android)
Maximum Media Size	1.6 inches
Sheet Size	0.63 inches
Product Dimensions	3.93 x 1.6 x 1.96 inches
Item Weight	4.4 ounces (126 Grams)
Battery	1 Lithium Ion battery (included)
Special Features	Continuous & Pre-cut Label Tapes, Waterproof, Oil-proof, Friction Resistant, Light Resistant, No Fading; Rich Font Icon Pattern, Portable, Inkless, Wireless, Rechargeable; Creative Print Functions: Barcode, Text, Picture, QR 2D Code, Table, Date, Border, Icon, Shape, Pattern, Template.

WARRANTY AND SUPPORT

The Makeid L1 Label Maker Machine comes with a **Lifetime Warranty**.
For technical support, warranty claims, or additional product information, please visit the official Makeid website or contact their customer service. You can find more information and contact details on the [Makeid Store on Amazon](#).

Related Documents - L1

	L1 Electric Scooter User Manual - Safety, Operation, and Maintenance Guide Comprehensive user manual for the L1 Electric Scooter. Covers safety precautions, assembly, functions, charging, learning to drive, care and storage, technical parameters, app usage, warranty information, and FCC compliance.
--	--

	<p>L1 RD Service Compatibility List and Download Links</p> <p>A comprehensive list of business applications compatible with L1 RD Service, including download links for device drivers. This document facilitates the integration of biometric devices for various banking and government services.</p>
	<p>MakeID Q1 Label Printer Instructions and Setup Guide</p> <p>Comprehensive guide to setting up and using the MakeID Q1 Label Printer. Learn label installation, app connection via Bluetooth, and basic printer functions for efficient organization.</p>
	<p>MakeID L1-A Quick Operational Manual - Label Printer Guide</p> <p>A comprehensive guide for the MakeID L1-A label printer, covering product introduction, setup, operation, printing, troubleshooting, and warranty information.</p>
	<p>MakeID L1 Label Printer: Quick Start Instructions</p> <p>Concise instructions for setting up and using the MakeID L1 Label Printer, covering initial setup, label loading, powering on, and connecting to the MakeID-Life app via Bluetooth.</p>
	<p>MakeID L1 Label Printer: Setup, App Download, and Connection Guide</p> <p>Comprehensive instructions for setting up your MakeID L1 label printer. Learn how to install labels, download the MakeID-Life app, and connect via Bluetooth for seamless label printing.</p>