

[Manuals.plus](#) /

> [Keylessbest](#) /

> Keylessbest Replacement Key Fob Remote Control for 2006-2007 Mitsubishi Eclipse/Galant (OUCG8D-620M-A)

Keylessbest OUCG8D-620M-A

Keylessbest Replacement Key Fob Remote Control (OUCG8D-620M-A)

For 2006-2007 Mitsubishi Eclipse and Galant

1. PRODUCT OVERVIEW

This document provides essential information and instructions for the Keylessbest OUCG8D-620M-A replacement key fob remote control. This device is designed to function as a remote keyless entry system for compatible Mitsubishi vehicles, offering convenience and security.

Your browser does not support the video tag.

Video 1: Overview of the Keylessbest key fob. This video demonstrates the physical appearance and basic functions of the key fob.

2. COMPATIBILITY AND SPECIFICATIONS

Ensure your vehicle is compatible with this replacement key fob before proceeding with installation or programming.

- **Compatible Vehicles:** 2006-2007 Mitsubishi Eclipse, 2006-2007 Mitsubishi Galant
- **FCC ID:** OUCG8D-620M-A
- **Frequency:** 313.8MHz
- **Buttons:** 4 (Lock, Unlock, Trunk, Panic)
- **Key Blade:** HU100 Blade (Uncut)
- **Battery Type:** 1 CR1616 battery (included)
- **Transponder Chip:** ID46
- **Item Model Number:** OUCG8D-620M-A
- **Product Dimensions:** 1.45 x 0.6 x 3.8 inches
- **Item Weight:** 0.95 ounces

Compatible



2006 - 2007 Mitsubishi Eclipse
2006 - 2007 Mitsubishi Galant

FCCID: OUCG8D-620M-A
Frequency: 313.8MHz



Our 15 years of professional quality
Give you a more comfortable experience

Keyless Entry Remote Key Fob

Image 1: Key fob displaying compatible vehicle models and technical specifications.

Type: Mitsubishi 4 buttons
Frequency: 313.8MHz
FCC ID: OUCG8D-620M-A
IC: 850G-G8D620MA



Important Note:

We strongly recommend that you have your KEY FOB programmed by a professional locksmith or dealer.

We only provide UNCUT key blades, please go to the local professional locksmith for cutting.

Image 2: Detailed view of the key fob buttons and their functions.



Type:
Remote Key

Tested in the **US**



FCC ID:
OUCG8D-620M-A

Local Store OEM [Program Chip PCB Board



Frequency:
313.8 MHz



Button:
4 Buttons



Key Blade:
HU100 Blade



Battery:
With CR1616



Chip:
ID46



PCB Board:
With

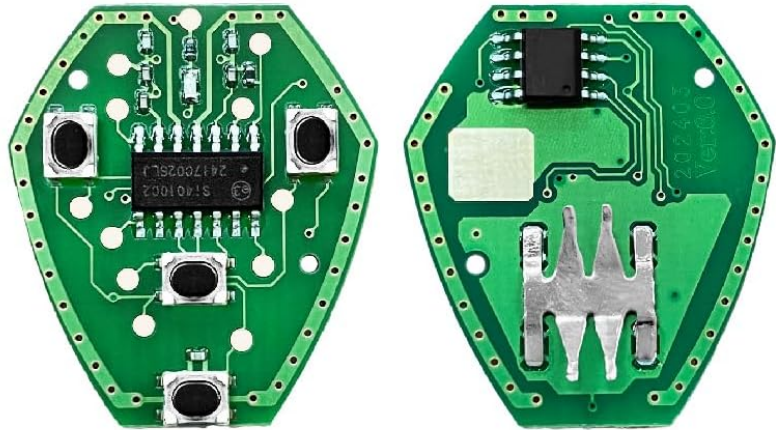


Image 3: Internal components of the key fob, highlighting the PCB, battery, and chip.

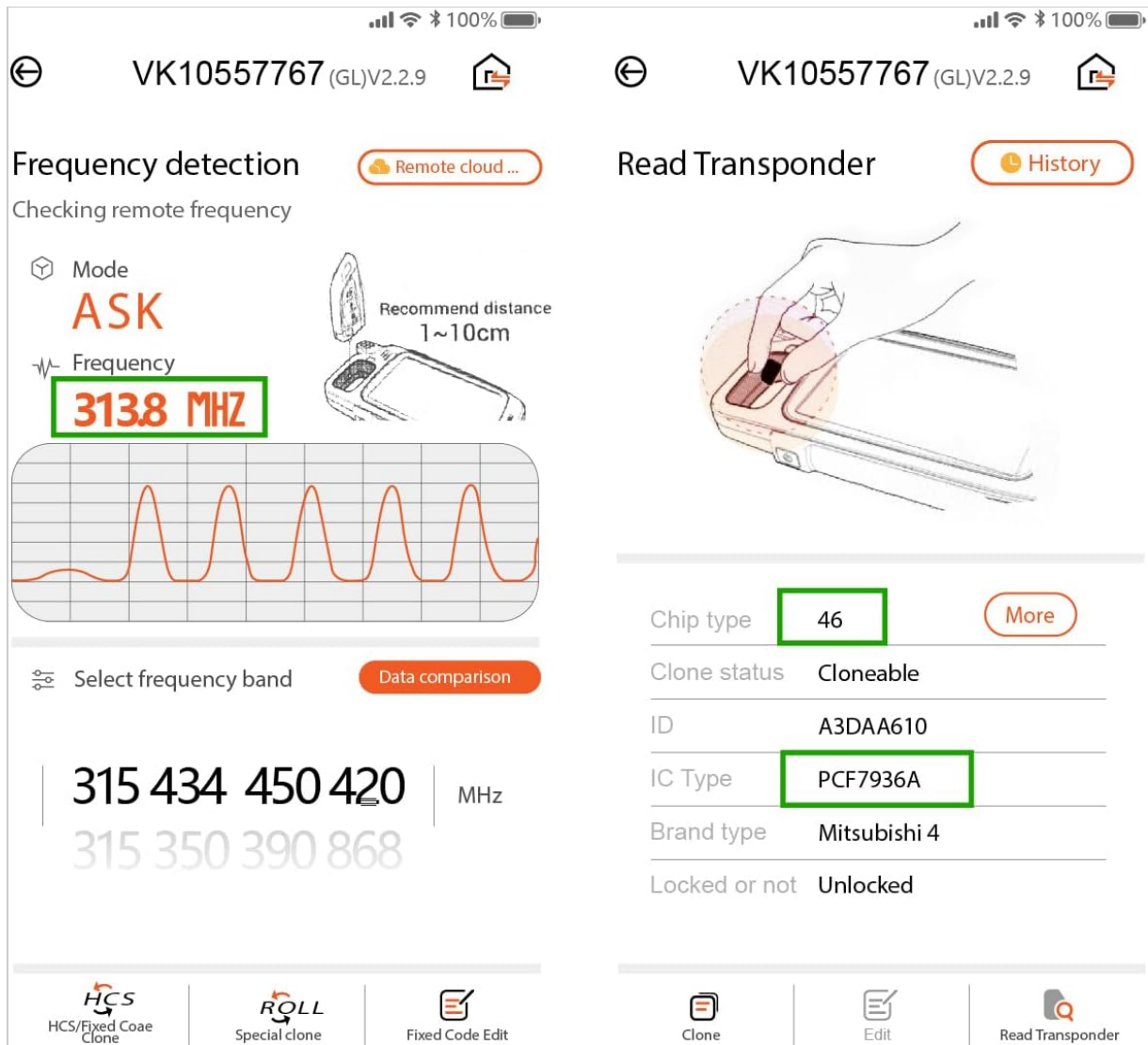


Image 4: Frequency detection and transponder chip identification for the key fob.

3. PACKAGE CONTENTS

The package includes the following components:

- Key Fob Shell x 1
- PCB Board x 1
- Uncut Key Blade x 1
- Lithium Battery (CR1616) x 1
- Transponder Chip (ID46) x 1

Package Included:

✓	Key Fob shell * 1
✓	PCB Board * 1
✓	Uncut Key Blade * 1
✓	Lithium Battery * 1
✓	Chip * 1



Image 5: Visual representation of all items included in the product package.

4. SETUP AND PROGRAMMING

This key fob requires professional programming to function with your vehicle. It is not a self-programmable unit for all vehicles.

1. **Key Cutting:** The included key blade is uncut. Take the key fob to a professional locksmith to have the blade cut to match your vehicle's ignition.
2. **Remote Programming:** The remote functions (lock, unlock, trunk, panic) and the transponder chip (for engine start) must be programmed to your vehicle. This typically requires specialized equipment.
3. **Professional Assistance:** It is strongly recommended to contact a local automotive locksmith or a Mitsubishi dealership for programming services. Confirm with them that this specific remote (FCC ID: OUCG8D-620M-A) can be programmed for your 2006-2007 Mitsubishi Eclipse or Galant before making a purchase or attempting programming.

Important Note: Attempting to program the key fob without the correct tools or knowledge may result in damage to the key fob or your vehicle's electronic system. Always consult with a professional.

5. MAINTENANCE: BATTERY REPLACEMENT

The key fob uses one CR1616 lithium battery. If the remote functions become unreliable or stop working,

the battery may need replacement.

1. **Open the Key Fob:** Use a small flat-head screwdriver or a coin to carefully pry open the key fob case. Look for a small notch or slot along the edge.
2. **Remove the Old Battery:** Gently remove the old CR1616 battery from its holder. Be careful not to damage the metal contacts.
3. **Install the New Battery:** Insert a new CR1616 battery into the holder, ensuring the positive (+) side is facing the correct direction (usually indicated on the fob or circuit board).
4. **Close the Key Fob:** Carefully snap the key fob case back together, ensuring all edges are aligned and the case is securely closed.
5. **Test the Key Fob:** Press any button on the key fob to test if the new battery is working properly.

Your browser does not support the video tag.

Video 2: Step-by-step guide on how to replace the battery in a Mitsubishi key fob. This video demonstrates opening the fob, removing the old battery, inserting a new one, and reassembling the unit.

6. TROUBLESHOOTING

- **Key Fob Not Working After Programming:**
 - Verify that the key blade was cut correctly by a professional locksmith.
 - Confirm that the remote and transponder chip were programmed correctly by a professional locksmith or dealership.
 - Check the battery: Ensure the CR1616 battery is installed correctly with the positive (+) side facing up and is not depleted. Refer to the "Battery Replacement" section.
 - Ensure your vehicle's battery is not low, as this can affect remote functionality.
- **Key Fob Buttons Unresponsive:**
 - Replace the battery (CR1616).
 - Ensure there is no physical damage to the buttons or the internal circuit board.
 - If the issue persists, the key fob may need to be re-programmed or inspected by a professional.
- **Vehicle Not Starting with New Key Fob:**
 - This indicates an issue with the transponder chip programming. The transponder chip is essential for disabling the vehicle's immobilizer system.
 - Contact a professional locksmith or dealership to verify and correct the transponder chip programming.

7. WARRANTY AND SUPPORT

Keylessbest products are manufactured to high standards. For any issues or support inquiries, please contact Keylessbest customer service through the retailer where the product was purchased. Please retain your proof of purchase for warranty claims.