

TAFFIO TAFC-1303

TAFFIO Digital Instrumental Cluster Speedometer User Manual

Model: TAFC-1303

1. INTRODUCTION

This manual provides detailed instructions for the installation, operation, and maintenance of your TAFFIO Digital Instrumental Cluster Speedometer. Please read this manual thoroughly before installation and use to ensure proper function and safety.

The TAFFIO Digital Instrumental Cluster Speedometer is designed to replace the original speedometer in compatible BMW vehicles, offering enhanced digital display features while retaining all original cluster functions.

2. COMPATIBILITY

This digital speedometer is compatible with the following vehicle models:

- BMW 7-Series E65 E66: Model years 2001-2008
- Alpina B7 E65: Model years 2005-2008

It is suitable for models both with and without a head-up display. The unit supports both gasoline and diesel engine types.

3. WHAT'S IN THE BOX

Upon opening the package, please verify that all components are present:

- 1x TAFFIO Digital Speedometer
- 1x USB cable
- 1x Warranty certificate

Delivery Content



Image: Package contents including the TAFFIO Digital Speedometer and USB cable.

4. INSTALLATION

The TAFFIO Digital Instrumental Cluster Speedometer is designed for a plug-and-play installation. No additional adapters or mounting frames are required.

1. **Preparation:** Ensure the vehicle's ignition is off and the battery is disconnected before beginning the installation process.
2. **Removal of Original Speedometer:** Carefully remove the existing instrumental cluster from your vehicle according to your vehicle's service manual.
3. **Installation of Digital Speedometer:** Connect the TAFFIO Digital Speedometer to the vehicle's existing wiring harness. The design ensures a direct fit without the need for modifications.
4. **Securing the Unit:** Secure the new digital speedometer in the dashboard opening.
5. **Reconnect Battery:** Reconnect the vehicle's battery.
6. **Initial Power-Up:** Turn on the ignition to verify the speedometer powers on correctly. No coding is required for initial operation.



5. OPERATING INSTRUCTIONS

The digital speedometer integrates seamlessly with your vehicle's existing controls. All original cluster functions are retained.

5.1. Navigation and Settings

To operate the speedometer and navigate through its menus, use the BC button on your vehicle's steering column stalk. Press the BC button to scroll through menu options, and press and hold the BC button to select a function or confirm a setting.



Image: Illustration of the BC button control for menu navigation.

5.2. Display Information

The digital cluster provides all important vehicle information at a glance, including:

- Speed (MPH/KMH)
- Engine RPM
- Fuel Level
- Coolant Temperature
- Oil Temperature
- Distance (Odometer/Trip)
- Mileage and Fahrenheit (°F) Display support
- Real-time consumption data
- Driving mode indication (e.g., ECO PRO, SPORT+)

6. FEATURES AND THEMES

The TAFFIO Digital Speedometer offers a customized original design with multiple themes to match your vehicle's aesthetic and your personal preference.

6.1. Available Themes

You can select from three distinct themes, each offering a unique visual layout for your instrumental cluster. These themes can be changed via the settings menu using the BC button.



Image: Example of a classic red and black theme.



Image: Example of a modern white and blue theme.

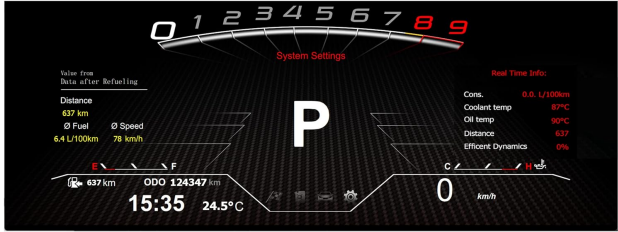


Image: Example of a sporty red and black theme.

The system ensures no error or fault messages are generated and maintains all original cluster functionalities.

7. MAINTENANCE

The TAFFIO Digital Instrumental Cluster Speedometer requires minimal maintenance. Keep the screen clean using a soft, dry, or slightly damp cloth. Avoid abrasive cleaners or solvents that could damage the display surface. Regularly check for any software updates if available through the manufacturer's official channels to ensure optimal performance and access to new features.

8. TROUBLESHOOTING

If you encounter any issues with your digital speedometer, please consider the following basic troubleshooting steps:

- **No Power:** Ensure all connections are secure and the vehicle's battery is properly connected and charged.
- **Display Issues:** If the display is blank or flickering, try restarting the vehicle. Check for any loose connections.
- **Functionality Problems:** If certain functions are not working, verify that the BC button is operating correctly.

If problems persist, please refer to the warranty and support section for further assistance.

9. SPECIFICATIONS

Feature	Detail
Model Number	TAFC-1303
Compatibility	BMW 7-Series E65 E66 (2001-2008), Alpina B7 E65 (2005-2008)
Installation	Plug-and-play, no coding required
Display Features	Multiple themes, real-time vehicle data, mileage and Fahrenheit support
Manufacturer	Real Media GmbH & Co. KG

10. WARRANTY AND SUPPORT

The TAFFIO Digital Instrumental Cluster Speedometer comes with a 2-year warranty from the date of purchase. Please retain your warranty certificate and proof of purchase for any claims.

For technical support, warranty claims, or further inquiries, please contact the manufacturer, Real Media GmbH & Co. KG, or your authorized dealer. Contact information can typically be found on the warranty certificate or the manufacturer's official website.

11. SAFETY AND DISPOSAL INFORMATION

Observe all local regulations regarding the disposal of electronic components. Do not dispose of this product with household waste. Proper disposal helps prevent potential negative consequences for the environment and human health.

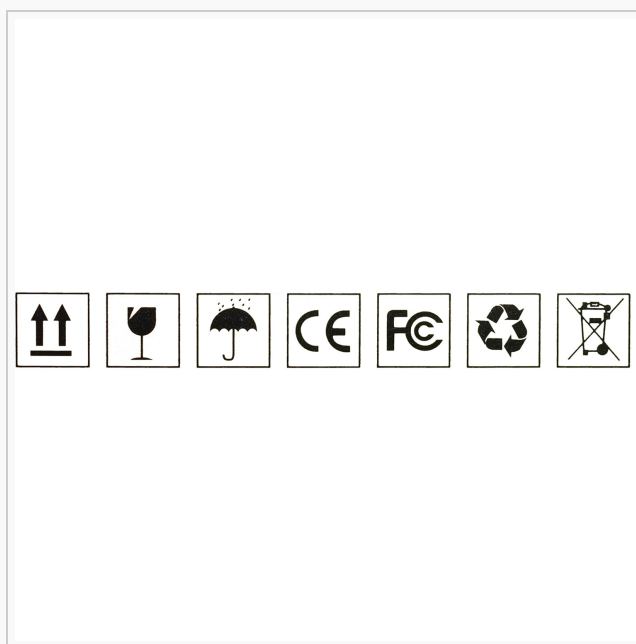


Image: Safety and disposal symbols for electronic products.