

TAFFIO TAFC-1311

TAFFIO Digital Instrumental Cluster Speedometer for BMW X1 E84 User Manual

1. INTRODUCTION

This manual provides detailed instructions for the installation, operation, and maintenance of your TAFFIO Digital Instrumental Cluster Speedometer, model TAFC-1311. Please read this manual thoroughly before installation and use to ensure proper function and to avoid damage.

The TAFFIO Digital Instrumental Cluster is designed to replace the original speedometer in compatible BMW X1 E84 models, offering enhanced digital display features and customizable themes.

2. COMPATIBILITY

- **Vehicle Model:** BMW X1 E84
- **Model Years:** 2009 to 2015
- **Head-Up Display:** Compatible with models both with and without a head-up display.
- **Engine Type:** Suitable for both Gasoline and Diesel models.

3. PACKAGE CONTENTS

Verify that all items listed below are included in your package:

- 1x TAFFIO Digital Speedometer (TAFC-1311)
- 1x Cluster Cover
- 1x USB Cable (for software updates)
- 1x Warranty Certificate



Image: Contents of the TAFFIO Digital Cluster package, showing the digital cluster unit, a cluster cover, and a USB cable.

4. SETUP AND INSTALLATION

The TAFFIO Digital Instrumental Cluster is designed for a plug-and-play installation, requiring no additional adapters or mounting frames. No coding is necessary; simply replace the original speedometer unit.

4.1 Installation Steps (General Overview)

1. Ensure the vehicle's ignition is off and the battery is disconnected before beginning installation.
2. Carefully remove the original speedometer unit from the dashboard. Consult your vehicle's service manual for specific removal instructions.
3. Connect the TAFFIO Digital Instrumental Cluster to the vehicle's existing wiring harness. The connections are designed to match the original ports.
4. Secure the new digital cluster in the dashboard opening.
5. Reconnect the vehicle battery and turn on the ignition to test the unit.
6. If necessary, use the provided USB cable to perform any software updates.

Delivery Content



Digital Cluster



Cluster Cover



USB - Cable (Optional for Updates)

Image: Rear view of the TAFFIO Digital Instrumental Cluster, highlighting the connection ports for plug-and-play installation.



Image: Front view of the TAFFIO Digital Instrumental Cluster, displaying a default theme with speedometer, tachometer, and vehicle information.



Image: The TAFFIO Digital Instrumental Cluster seamlessly integrated into a BMW X1 E84 dashboard, viewed from the driver's perspective.

5. OPERATING INSTRUCTIONS

The digital cluster retains all original functions and provides additional customization options.

5.1 Navigation and Control

The speedometer is operated using the vehicle's existing BC button (Board Computer button), typically located on the turn signal stalk. Pressing the BC button allows you to scroll through menus and options. Pressing and holding the BC button selects a function or confirms a setting.

Many themes to choose
Viele Themen zur Auswahl

Important car information
at a glance !

Wichtige Auto - Informationen
auf einen Blick !

By pressing the BC button you operate the speedometer and can scroll through the menus. Press and hold BC to select a function.

Durch Drücken des BC Knopfes bedienen Sie den Tacho und können über die Menüs blättern.
 Durch gedrückt halten wählen Sie eine Funktion aus.

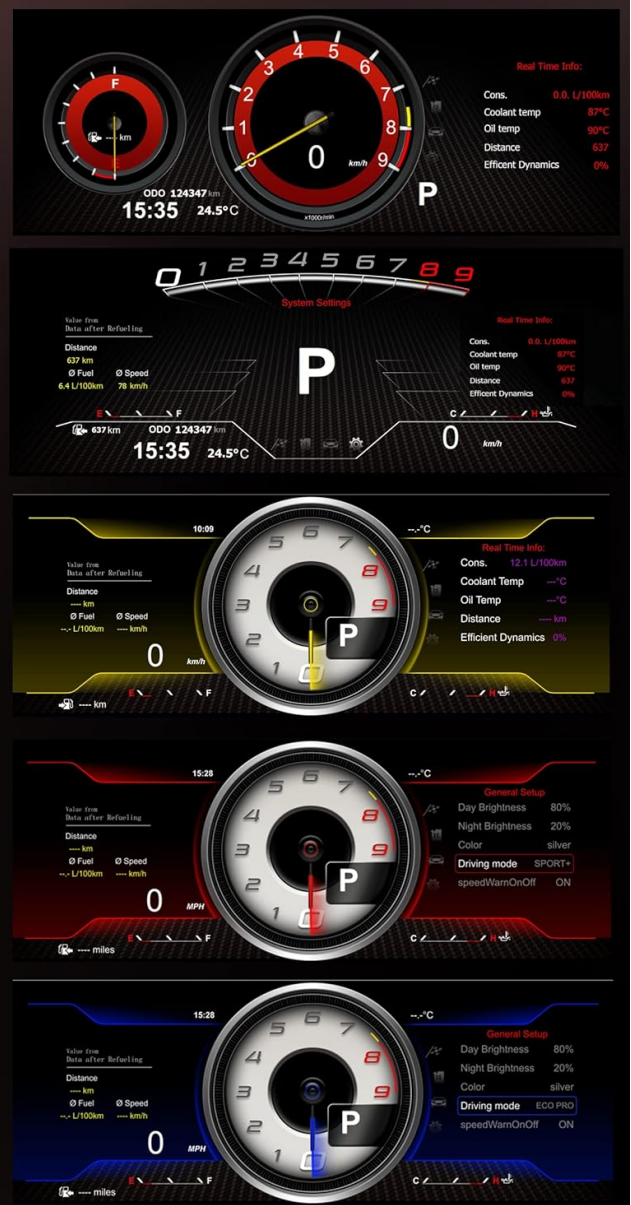


Image: Illustration showing various display themes and the operation of the BC button on the turn signal stalk to navigate the digital cluster menus.

5.2 Display Themes

The digital cluster offers multiple themes to personalize your driving experience. You can switch between these themes via the menu system using the BC button.



Image: Display showing a red-themed classic gauge layout with real-time vehicle information.

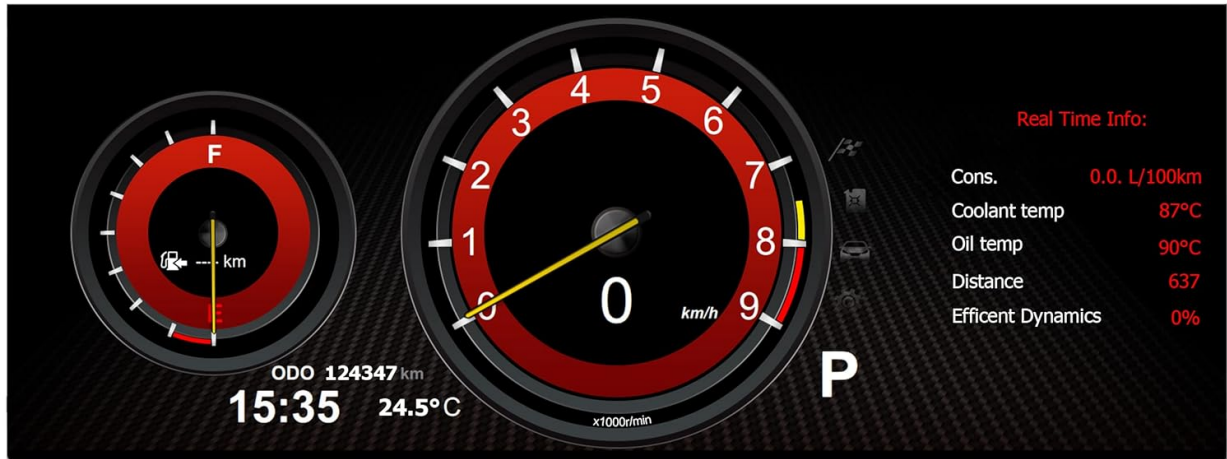


Image: Display showing a red-themed digital bar graph layout with system settings and real-time information.

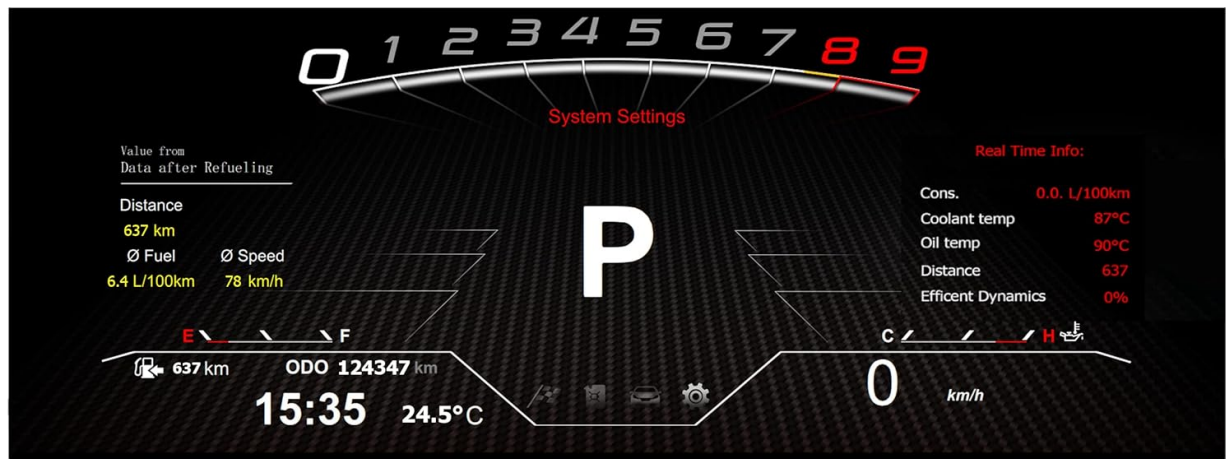


Image: Display showing a blue-themed classic gauge layout with real-time vehicle information.

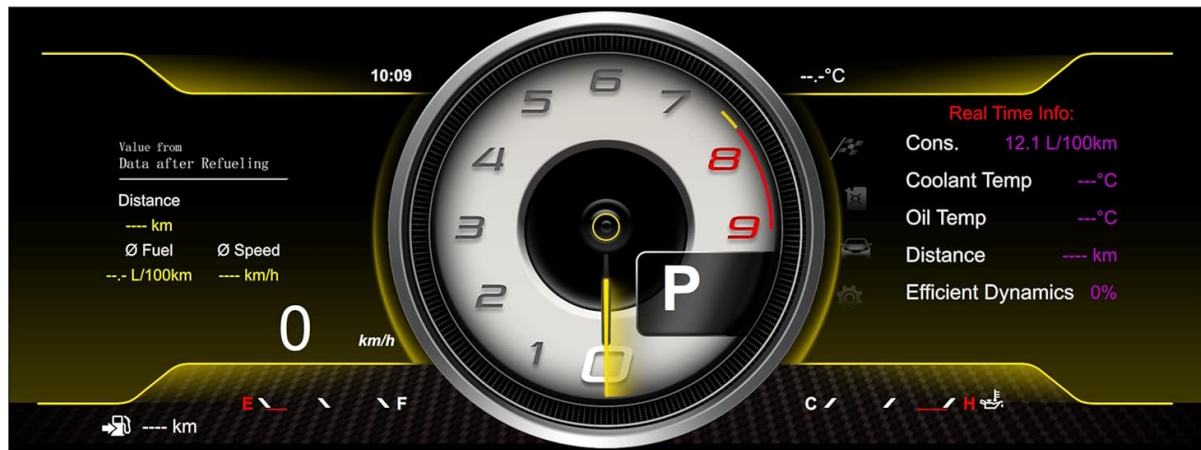


Image: Display showing a blue-themed digital bar graph layout with general setup options and real-time information.

5.3 Information Display

The cluster provides all important vehicle information at a glance, including:

- Speed (MPH/KMH)
- Engine RPM
- Fuel Level
- Coolant Temperature
- Oil Temperature
- Distance (Odometer/Trip)
- Fuel Consumption (L/100km)
- Driving Mode (e.g., ECO PRO, SPORT+)
- Time and Ambient Temperature
- Supports Mileage and Fahrenheit (°F) Display.

6. MAINTENANCE

To ensure the longevity and optimal performance of your digital cluster, follow these maintenance guidelines:

- **Cleaning:** Use a soft, lint-free cloth to clean the display. Avoid abrasive cleaners or solvents that could damage the screen surface.
- **Software Updates:** Periodically check the manufacturer's website for available software updates. Updates can improve performance, add features, or resolve issues. Use the provided USB cable for this purpose.
- **Environmental Conditions:** Avoid exposing the unit to extreme temperatures or direct sunlight for prolonged periods when the vehicle is parked.

7. TROUBLESHOOTING

If you encounter issues with your TAFFIO Digital Instrumental Cluster, refer to the following common troubleshooting steps:

- **No Display/Power:** Ensure all connections are secure and the vehicle battery is properly connected. Check vehicle fuses related to the instrument cluster.
- **Incorrect Readings:** Verify that the unit is correctly installed and that no error messages are displayed. If issues persist, a software update might be required.
- **Error Messages:** The unit is designed to operate without error or fault messages. If an error appears, consult the vehicle's diagnostic system or contact technical support.
- **Functionality Issues:** If certain functions are not working as expected, try restarting the vehicle. If the problem persists, consider performing a software update.

For persistent issues not resolved by these steps, please contact TAFFIO customer support.


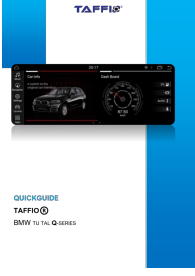
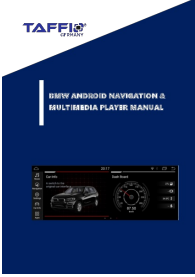



8. SPECIFICATIONS

Model Number	TAFC-1311
Compatibility	BMW X1 E84 (2009-2015)
Installation	Plug-and-play, no coding required
Display Features	Multiple themes, real-time vehicle data, mileage, Fahrenheit (°F) support
Manufacturer	Real Media GmbH & Co. KG

9. WARRANTY AND SUPPORT

Your TAFFIO Digital Instrumental Cluster comes with a 2-year warranty from the date of purchase. Please retain your invoice or proof of purchase for warranty claims.

For technical support, warranty inquiries, or further assistance, please contact the seller, Real Media Shop, or refer to the contact information provided with your product or on the TAFFIO official website.

	<p>TAFFIO BMW Android Navigation & Multimedia Player Manual</p> <p>User manual for the TAFFIO BMW Android Navigation and Multimedia Player, covering installation, Wi-Fi, Bluetooth, Mirror Link, DVR, media playback, navigation updates, and system settings for BMW vehicles.</p>
	<p>TAFFIO Q-SERIES Quick Guide: BMW Car Infotainment System Installation & Setup</p> <p>Comprehensive quick guide for installing and setting up the TAFFIO Q-SERIES infotainment system for BMW vehicles. Covers EVO, CIC, CCC, NBT system connections, display settings, sound, i-Drive, rear camera, navigation, date/time, Android Auto, and Wireless CarPlay.</p>
	<p>TAFFIO BMW Android Navigation & Multimedia Player Manual</p> <p>Comprehensive user manual for the TAFFIO BMW Android Navigation and Multimedia Player, covering installation, setup, features like Wi-Fi, Mirror Link, Bluetooth, media playback, navigation, camera settings, and factory configurations.</p>
	<p>TAFFIO LPA07 Modell Navigation & Multimedia Gebrauchsanweisung</p> <p>Umfassende Gebrauchsanweisung für das TAFFIO LPA07 Modell, die Navigation, Multimedia, Bluetooth, CarPlay/Android Auto und Einstellungen abdeckt. Enthält wichtige Sicherheitshinweise und Installationsanleitungen.</p>
	<p>TAFFIO PX5 Modell: Benutzerhandbuch für Navigation und Multimedia</p> <p>Entdecken Sie die Funktionen Ihres TAFFIO PX5 Navigations- und Multimediasystems mit diesem umfassenden Benutzerhandbuch. Erfahren Sie mehr über Installation, Bedienung, Bluetooth, Navigation und Fehlerbehebung.</p>
	<p>TAFFIO XY-Series Installation Guide</p> <p>Installation guide for the TAFFIO XY-Series car audio system, covering Bose sound system integration, rear camera connections, CAN bus integration, and original USB port usage.</p>